



MERRY LITTLE CHRISTMAS

Christmas Star Pillow
Red/Duckegg



Christmas Star Pillow

(Red/duck egg colourway)

This pillow is the perfect companion to the Christmas Star Quilt. The design is the same eight-point star block but the pillow uses just four of the blocks, nicely set off by sashing and cornerstones. This pillow has a lovely red and duck egg blue colour scheme, using fabrics from the Merry Little Christmas fabric collection and its blenders, with a few fabrics from the Creating Memories collection, plus a Woven Tea Towel Basic in a fresh red and white stripe. A second pillow in this design is based on a traditional cream and green combination and there is also a Christmas Star Quilt to match. See tildasworld.com for the quilt instructions and alternate pillow details.

Difficulty rating *

Materials

- Fabric 1: 10in (25cm) square – Holly red (100621)
- Fabric 2: 10in (25cm) square – Carol burgundy (100622)
- Fabric 3: fat eighth (*not* a long ⅛yd) – Mistletoe red (100623)
- Fabric 4: 10in (25cm) square – Joy red (100624)
- Fabric 5: 10in (25cm) square – Paper Scenes burgundy (100625)
- Fabric 6: 10in (25cm) square – Holly duck egg (100626)
- Fabric 7: 10in (25cm) square – Carol duck egg (100627)
- Fabric 8: fat eighth or long ⅛yd (15cm) – Joy blue (100628)
- Fabric 9: fat eighth or long ⅛yd (15cm) – Noel mist (110143)
- Fabric 10: fat eighth (*not* a long ⅛yd) – Winter Friends duck egg (100630) *
- Fabric 11: 10in (25cm) square – Eve petrol (110142)
- Fabric 12: 10in (25cm) square – Eve burgundy (110140)
- Fabric 13: 10in (25cm) square – Noel red (110139)
- Fabric 14: fat eighth (*not* a long ⅛yd) – Eve clay (110148)
- Fabric 15: 10in (25cm) square – Paper Scenes duck egg (100629)
- Fabric 16: fat eighth (*not* a long ⅛yd) – Plaid stone (160079)
- Fabric 17: fat eighth (*not* a long ⅛yd) – Stripe toffee (160076)
- Fabric 18: fat eighth or long ⅛yd (15cm) – Polka Dot red (160085)
- Fabric 19: 10in (25cm) square – Gingham red (160087)
- Fabric 20: fat eighth or long ⅛yd (15cm) – Seam Stripe red (160083)
- Fabric 21: 10in (25cm) square – Apple Cake Stripe red (160112)
- Lining fabric (optional): 25in (63.5cm) square
- Wadding (batting): 25in (63.5cm) square
- Backing fabric: 1yd (1m) – Paper Scenes duck egg (100629)
- Binding fabric: 1/3yd (30cm) – Noel taupe (110149)
- Piecing and quilting threads
- Quilter's ruler, rotary cutter and mat
- Five buttons for fastening (optional) – Merry Little Christmas buttons 16mm (400072)
- Pillow pad to fit cover

Fabric Notes

As noted in the Materials list, for some fabrics a fat eighth can be used or a long ⅛yd (15cm), but for others only a fat eighth will be deep enough. A fat eighth is assumed to be 10½in x 18in (26.7cm x 45.7cm).

* Fabric 10 (Winter Friends) has lots of charming motifs, so it's nice to fussy cut the squares needed for this. Extra fabric has been allowed in the Materials list.

Finished Size

23½in (59.7cm) square

General Notes

- Fabric quantities are based on a usable width of 42in (107cm), unless otherwise stated.
- Measurements are in imperial inches with metric conversions in brackets – use only *one* system throughout (preferably inches). Width measurements are generally given first.
- Press fabric before cutting and trim as needed to square up the fabric pattern/weave, using a quilting ruler to cut the top raw edge at 90 degrees to the selvages.
- Use ¼in (6mm) seams unless otherwise instructed.
- Read all the instructions through before you start.
- Always make one complete block as a test before going on to make the remaining blocks.
- Abbreviations: RS = right side; WS = wrong side.

Pillow Layout

1 The pillow has four Star blocks, with the blocks separated by narrow sashing strips, with cornerstones. Refer to **Fig A** for the fabrics used and **Fig B** for the pillow layout and fabric positions.

Fig A Fabric swatches (Christmas Star Pillow – red/duck egg)

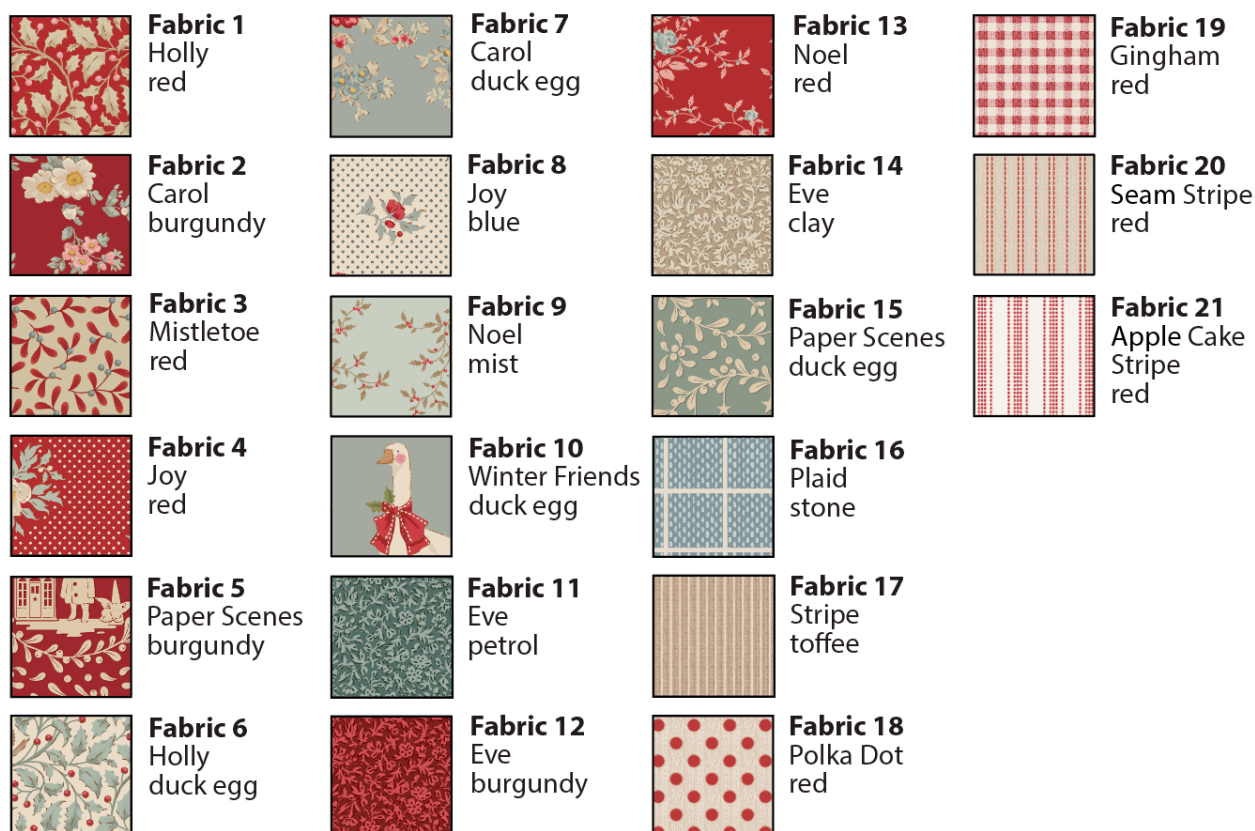


Fig B Pillow layout and fabric positions
 Bold numbers indicate the fabrics used (see Fig A)



Cutting Out

2 Start by cutting the sashing strips and cornerstone squares (see also **Fig B**).

- From Fabric 3 cut three strips 1½in x 10½in (3.8cm x 26.7cm).
- From Fabric 16 cut three strips 1½in x 10½in (3.8cm x 26.7cm).
- From Fabric 14 cut three strips 10½in x 1½in (26.7cm x 3.8cm).
- From Fabric 17 cut three strips 10½in x 1½in (26.7cm x 3.8cm).
- From Fabric 11 cut nine squares 1½in (3.8cm).

3 For the Star blocks, use the cut sizes given in **Fig C**. For the fabric positions for each of the four blocks, follow **Fig B**. The centre 5½in (14cm) squares for Block 1 and Block 4 could be fussy cut to feature an interesting motif.

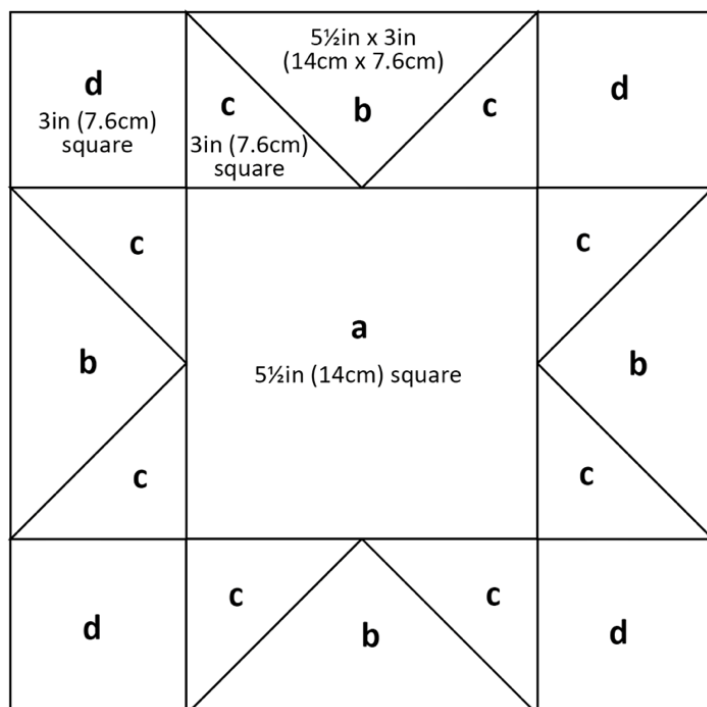
The following is a list of the number of pieces and sizes needed for each fabric, which you could use as a checklist.

- Fabric 1 – cut four 3in (7.6cm) squares.
- Fabric 2 – cut eight 3in (7.6cm) squares.
- Fabric 3 – sashing, see Step 2.
- Fabric 4 – cut four 3in (7.6cm) squares.
- Fabric 5 – cut eight 3in (7.6cm) squares.
- Fabric 6 – cut eight 3in (7.6cm) squares.
- Fabric 7 – cut one 5½in (14cm) square.
- Fabric 8 – cut four 5½in x 3in (14cm x 7.6cm) rectangles.
- Fabric 9 – cut four 5½in x 3in (14cm x 7.6cm) rectangles.
- Fabric 10 – cut two 5½in (14cm) squares (fussy cut).
- Fabric 11 – sashing, see Step 2.
- Fabric 12 – cut four 3in (7.6cm) squares.
- Fabric 13 – cut four 3in (7.6cm) squares.
- Fabric 14 – sashing, see Step 2.
- Fabric 15 – cut one 5½in (14cm) square.
- Fabric 16 – sashing, see Step 2.
- Fabric 17 – sashing, see Step 2.
- Fabric 18 – cut four 5½in x 3in (14cm x 7.6cm) rectangles.
- Fabric 19 – cut four 3in (7.6cm) squares.
- Fabric 20 – cut four 5½in x 3in (14cm x 7.6cm) rectangles.
- Fabric 21 – cut four 3in (7.6cm) squares.

Fig C Cut measurements for a Star block

Sizes include ¼in (6mm) seam allowances. All pieces to be cut initially as squares or rectangles

Block = 10½in (26.7cm) unfinished



4 Cut the backing fabric across into two pieces, each 24in x 15½in (61cm x 39.4cm).

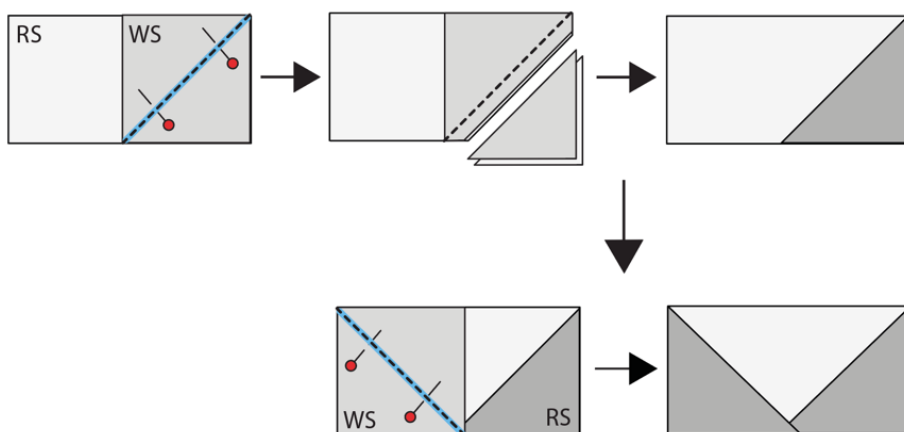
5 Cut the binding fabric into three 2½in (6.4cm) x width of fabric strips. Sew together end to end and press seams open. Press the binding in half along the length, wrong sides together.

Making A Star Block

6 A Star block is easy and starts by making Flying Geese units. Each block has four of these units, in two different fabric combinations. **Fig D** shows how to make a single flying goose unit. The diagram is shown in greys but follow the fabric colours for each block carefully. Note that each goose has two different fabrics for the smaller squares.

To make a single goose, take the rectangle of fabric and place it right side (RS) up. Take one of the smaller squares and pencil mark the diagonal line on the wrong side. Pin the square right sides together with the rectangle, aligning the edges and with the diagonal line in the direction shown. Sew along the marked line. Trim off excess fabric $\frac{1}{4}$ in (6mm) outside the sewn line and press the triangle outwards. Repeat this marking, pinning and sewing with the other square. Trim off excess, as before and press the triangle outwards. Check the unit is the same size as the original rectangle.

Fig D Making a flying goose unit

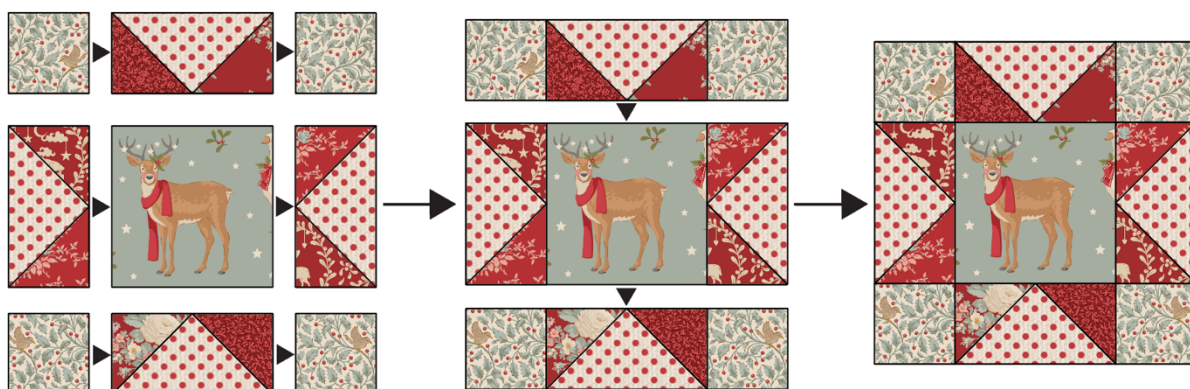


7 When four flying geese have been made for a block, the block can be assembled. The process for Block 1 is shown in **Fig E**. Arrange these units with the other pieces for the block and sew them together into three rows. Press the seams open or to the side. If pressing to the side, press the seams of the central row in the opposite direction to the other two rows. Now sew the three rows together and press. Check the block is $10\frac{1}{2}$ in (26.7cm) square.

8 Repeat the block-making process to sew Block 2, Block 3 and Block 4.

Fig E Assembling a block

Block 1 shown

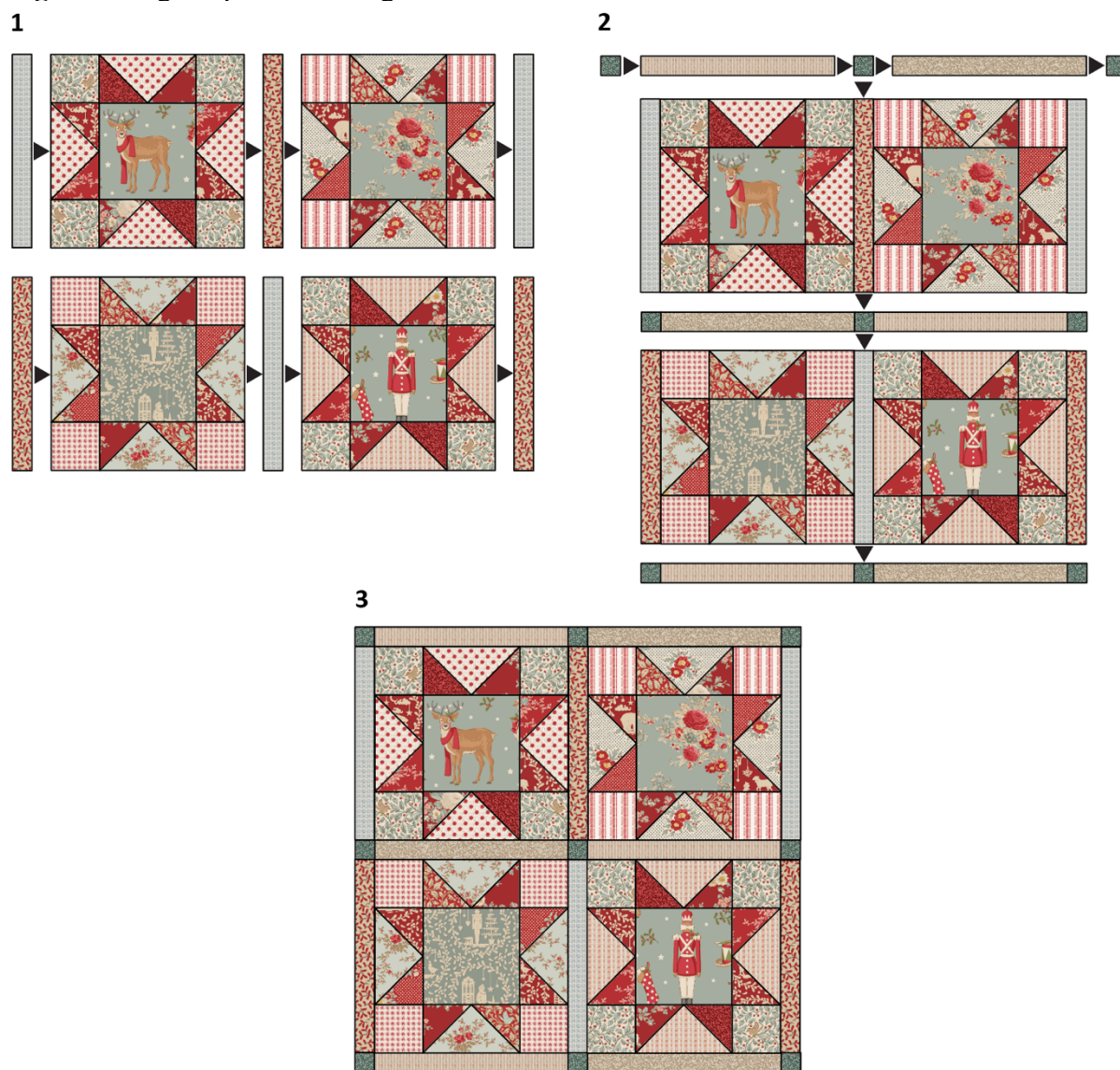


Sewing the Patchwork Together

9 To assemble the pillow front, lay out the blocks with the vertical sashing strips between them and at each end, as shown in **Fig F 1**. Using $\frac{1}{4}$ in (6mm) seams, sew each row together and press seams in one direction. Each sewn row should measure $23\frac{1}{2}$ in (59.7cm) long.

10 Lay out the horizontal sashing pieces with the cornerstones between them, as in **Fig F 2**. Sew each row together, pressing the seams in the opposite direction to the block rows. Check these sashing rows are $23\frac{1}{2}$ in (59.7cm) long. If too long or too short, adjust your seam allowance – the row must measure the same as the sewn block rows or your seams will not match up neatly. Now sew these horizontal rows into place with the block rows, as shown in **Fig F 3**, taking care to match seams neatly where needed. Press the seams.

Fig F Sewing the patchwork together



Quilting and Finishing

11 Make a quilt sandwich of the patchwork, wadding (batting) and lining fabric (if using). Quilt as desired. Trim off excess wadding and lining fabric to match the patchwork size.

12 To make up the pillow cover, take the two pieces of fabric for the cushion back and on one long edge of each piece, create a hem by turning the edge over by 1in (2.5cm), twice. Sew the

seams with matching thread and press. **Fig G** is shown in greys, so you can use the Tilda fabric and buttons suggested in the Materials list, or those of your choice.

13 For the fastening, using your sewing machine, create five equally spaced buttonholes within the hem of one of the pieces. Sew five buttons onto the other piece, matching their positions to the buttonholes. Note: Instead of making buttonholes, you could use a hook and loop fastening, such as Velcro, to fasten the cover and sew on the buttons as a decorative feature.

14 The pillow has a bound edge, so the pieces are assembled with right sides out, as follows. On the backing, fasten the buttons into the buttonholes and place the whole piece right side down. Place the quilted patchwork on top, right side up. Make sure the outer edges of all pieces are aligned. Pin or tack (baste) the layers together and then bind as normal. As you sew the binding in place it will fix the other layers together. Press the cover and insert a pillow pad to finish.

Fig G Making up the cover

