



Tilda®

# Wallflower

Campervan Pillows  
Burgundy & Blue



# Campervan Pillow

## (Burgundy colourway)

This fun pillow is great to sew on its own or as a companion to one of the Campervan quilts. It shows an iconic campervan, with an added decorative touch of buttons on the wheels. Four other colourways are available for the pillow, telling the distinctive colour story of the Wallflower collection. Two pillows have colours reminiscent of the 1960s and 70s, with caramel, blue, ginger and thistle shades, while the other two pillows feature greens and pinks with hints of yellow and blue. All of the pillow instructions can be found on [tildasworld.com](http://tildasworld.com), as well as the two Campervan Quilts.

Difficulty rating \*\*\*

### Materials

- Fabric 1:  $\frac{3}{8}$ yd (40cm) – Chambray burgundy (160040) (background)
- Fabric 2: about a 9in (23cm) square – Tiny Dot blue (160067)
- Fabric 3: about a 5in (12.5cm) square – Solid mustard (120040)
- Fabric 4: about a 5in (12.5cm) square – Polka Dot yellow (160064)
- Fabric 5: about a 9in (23cm) square – Janice red (100614)
- Fabric 6:  $\frac{1}{8}$ yd (15cm) – Gingham red (160087)
- Fabric 7: about a 9in (23cm) square – Chambray petrol (160005)
- Fabric 8:  $\frac{1}{8}$ yd (15cm) – Bianca red (100618)
- Fabric 9: about a 9in (23cm) square – Bellflower flaxen (110130)
- Lining fabric (optional): 24in x 19in (61cm x 48cm)
- Wadding (batting): 24in x 19in (61cm x 48cm)
- Fabric for back of pillow:  $\frac{3}{4}$ yd (75cm) – Polka Dot red (160085)
- Binding fabric:  $\frac{1}{4}$ yd (25cm) – Janice red (100614)
- Piecing and quilting threads
- Quilter's ruler, rotary cutter and mat
- Removable fabric marker
- Two buttons for wheel decoration – Wallflower buttons red/green 16mm (400070)
- Five buttons for fastening (optional) – Wallflower buttons red/green 16mm (400070)
- Pillow pad to fit cover

### Fabric Notes

Where a long eighth of a yard is given in the Materials list you could use a fat eighth instead., which is assumed to be approximately 10½in x 18in (26.7cm x 45.7cm).

The Chambray and Solid fabrics can be cut in any direction for the most economical use of the fabric.

### Finished Size

21¾in x 16¾in (55.3cm x 42.5cm)

### General Notes

- Fabric quantities are based on a usable width of 42in (107cm), unless otherwise stated.
- Measurements are in imperial inches with metric conversions in brackets – use only *one* system throughout (preferably inches). Width measurements are generally given first.
- Press fabric before cutting and trim as needed to square up the fabric pattern/weave, using a quilting ruler to cut the top raw edge at 90 degrees to the selvages.

- Use ¼in (6mm) seams unless otherwise instructed.
- Read all the instructions through before you start.
- Always make one complete block as a test before going on to make the remaining blocks.
- Abbreviations: RS = right side; WS = wrong side.

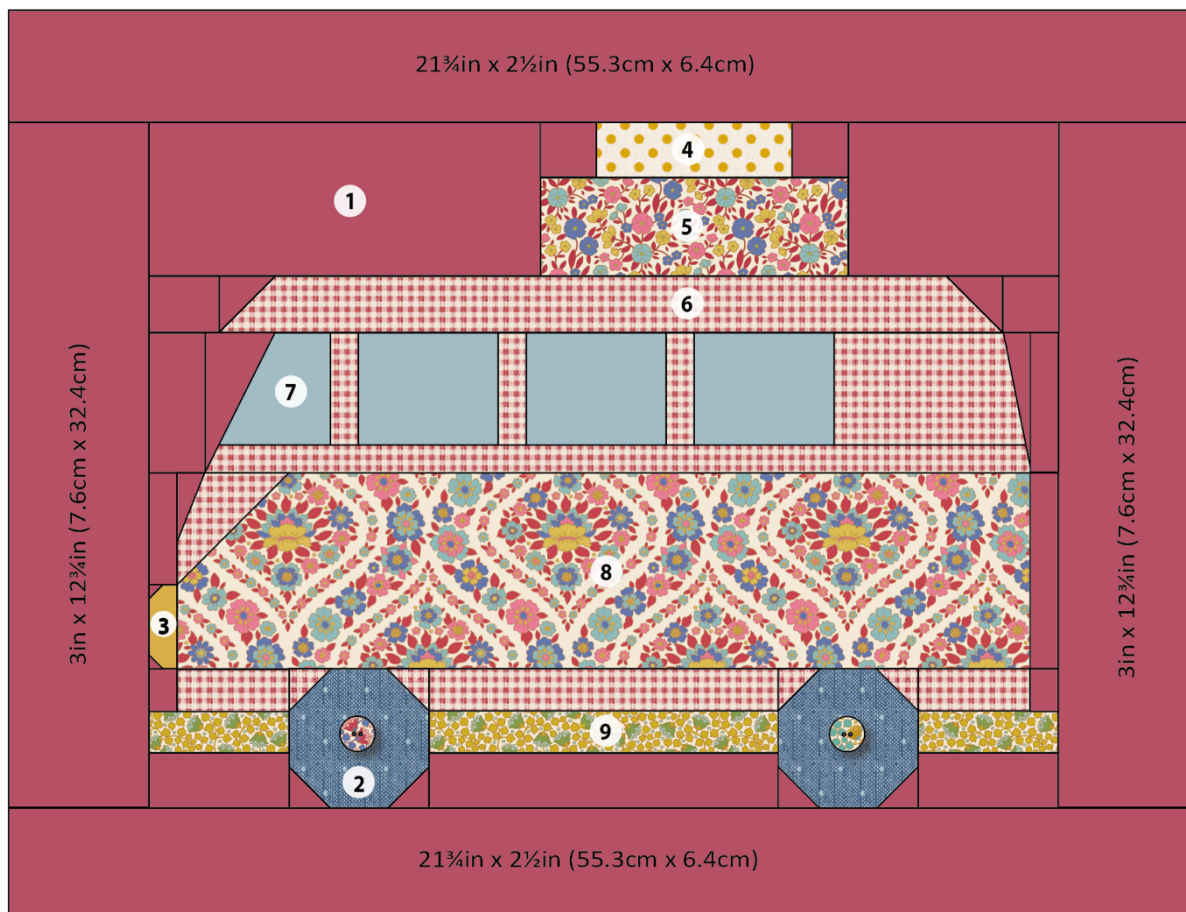
## Pillow Layout

1 The pillow layout consists of one Campervan block, with a border on each side. See **Fig A** for the fabrics used and **Fig B** for the pillow layout, the cut sizes of the border pieces and the positions of the fabrics.

**Fig A** Fabric swatches (Campervan Pillow – burgundy)



**Fig B** Pillow layout with cut sizes of the border pieces and fabric positions



## Cutting Out

2 Start by cutting the border pieces from the background fabric (Fabric 1), as in **Fig B**.

- For the side borders, cut two strips 3in x 12<sup>3</sup>/<sub>4</sub>in (7.6cm x 32.4cm).
- For the top and bottom borders cut two strips 21<sup>3</sup>/<sub>4</sub>in x 2<sup>1</sup>/<sub>2</sub>in (55.3cm x 6.4cm).

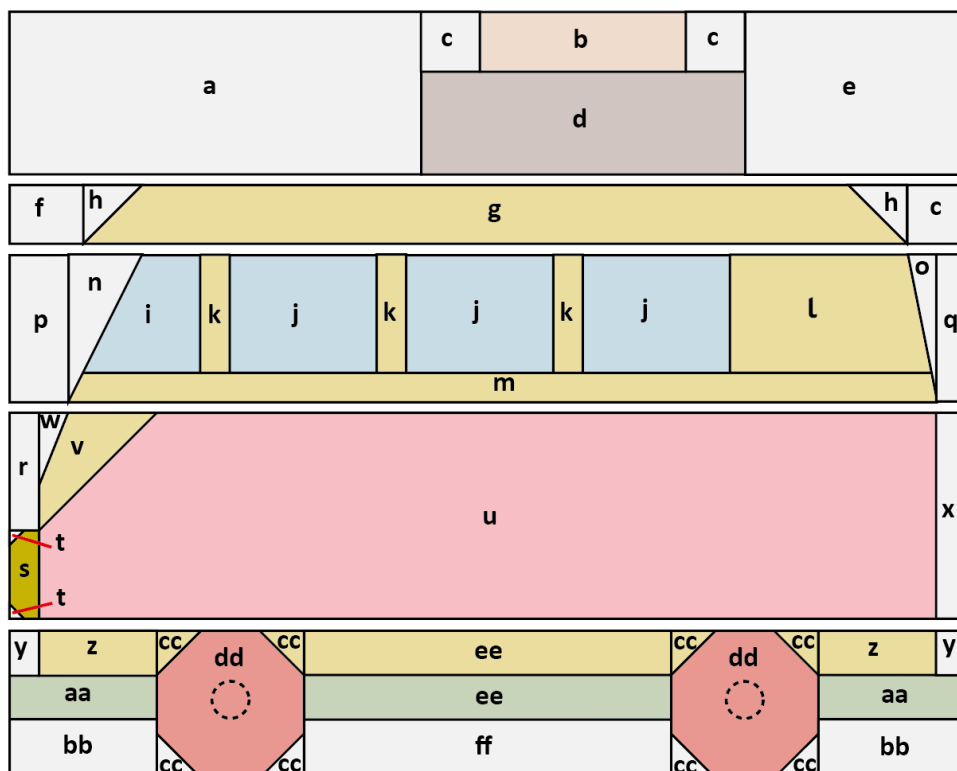
3 Cut the fabrics for the campervan using the measurements given in **Fig C**.

4 From the pillow back fabric, cut two pieces each 22in x 12in (56cm x 30.5cm).

5 Cut the binding fabric into three 2<sup>1</sup>/<sub>2</sub>in (6.4cm) x width of fabric strips. Sew together end to end and press seams open. Press the binding in half along the length, wrong sides together.

**Fig C** Cut measurements for the block

Sizes include <sup>1</sup>/<sub>4</sub>in (6mm) seam allowances. All pieces to be cut initially as squares or rectangles



### Campervan Block

- a** 7<sup>1</sup>/<sub>2</sub>in x 3<sup>1</sup>/<sub>4</sub>in (19cm x 8.3cm)
- b** 4in x 1<sup>1</sup>/<sub>2</sub>in (10.2cm x 3.8cm)
- c** 1<sup>1</sup>/<sub>2</sub>in (3.8cm) square
- d** 6in x 2<sup>1</sup>/<sub>4</sub>in (15.2cm x 5.7cm)
- e** 4<sup>1</sup>/<sub>4</sub>in x 3<sup>1</sup>/<sub>4</sub>in (10.8cm x 8.3cm)
- f** 1<sup>3</sup>/<sub>4</sub>in x 1<sup>1</sup>/<sub>2</sub>in (4.4cm x 3.8cm)
- g** 14<sup>1</sup>/<sub>2</sub>in x 1<sup>1</sup>/<sub>2</sub>in (36.8cm x 3.8cm)
- h** 1<sup>1</sup>/<sub>2</sub>in (3.8cm) square
- i** 2<sup>3</sup>/<sub>4</sub>in x 2<sup>1</sup>/<sub>2</sub>in (7cm x 6.4cm)
- j** 3in x 2<sup>1</sup>/<sub>2</sub>in (7.6cm x 6.4cm)
- k** 1in x 2<sup>1</sup>/<sub>2</sub>in (2.5cm x 6.4cm)
- l** 4in x 2<sup>1</sup>/<sub>2</sub>in (10.2cm x 6.4cm)
- m** 15<sup>1</sup>/<sub>4</sub>in x 1in (38.7cm x 2.5cm)
- n** 1<sup>3</sup>/<sub>4</sub>in x 3in (4.4cm x 7.6cm)
- o** 1in x 3in (2.5cm x 7.6cm)
- p** 1<sup>1</sup>/<sub>2</sub>in x 3in (3.8cm x 7.6cm)

- q** 1in x 3in (2.5cm x 7.6cm)
- r** 1in x 2<sup>1</sup>/<sub>2</sub>in (2.5cm x 6.4cm)
- s** 1in x 2in (2.5cm x 5.1cm)
- t** <sup>3</sup>/<sub>4</sub>in (2cm) square
- u** 15<sup>1</sup>/<sub>4</sub>in x 4in (40cm x 10.2cm)
- v** 2<sup>1</sup>/<sub>2</sub>in (6.4cm) square
- w** 1in x 1<sup>3</sup>/<sub>4</sub>in (2.5cm x 4.4cm)
- x** 1in x 4in (2.5cm x 10.2cm)
- y** 1in x 1<sup>1</sup>/<sub>4</sub>in (2.5cm x 3.2cm)
- z** 2<sup>1</sup>/<sub>2</sub>in x 1<sup>1</sup>/<sub>4</sub>in (6.4cm x 3.2cm)
- aa** 3in x 1<sup>1</sup>/<sub>4</sub>in (7.6cm x 3.2cm)
- bb** 3in x 1<sup>1</sup>/<sub>2</sub>in (7.6cm x 3.8cm)
- cc** 1<sup>1</sup>/<sub>4</sub>in (3.2cm) square
- dd** 3in (7.6cm) square
- ee** 6<sup>3</sup>/<sub>4</sub>in x 1<sup>1</sup>/<sub>4</sub>in (17.2cm x 3.2cm)
- ff** 6<sup>3</sup>/<sub>4</sub>in x 1<sup>1</sup>/<sub>2</sub>in (17.2cm x 3.8cm)

○ Button



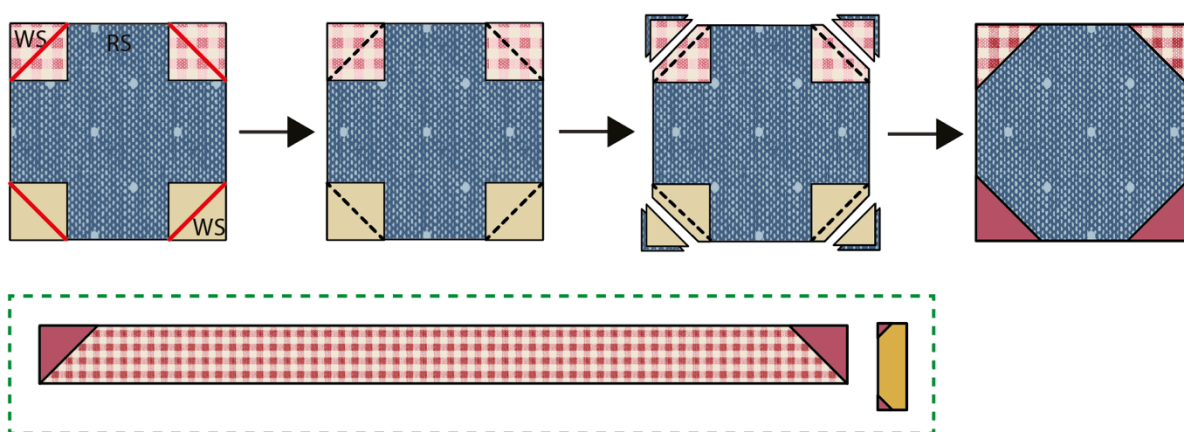
## Making the Block

**6** The Campervan block uses corner triangle units in various places, so we will describe this technique first. Refer back to it as needed as you make the block. Follow **Fig B** and **Fig C** carefully to select the correct fabrics and sizes.

**7 Fig D** (top part of diagram) shows the method using an example of a wheel unit, which has triangles on all four corners. Some other block units only need two triangles and examples are shown in the green dashed box (bottom of Fig D).

To make a corner triangle unit, choose the correct print fabric piece and the smaller fabric squares. Place the print fabric right side (RS) up. Take the four smaller squares and pencil mark a diagonal line on the wrong side (WS) of each square. Position the squares right sides together with the print rectangle, in the correct positions for that particular unit and with the marked lines in the directions shown in the diagram. Pin in place and then sew along each marked line. Trim off excess fabric  $\frac{1}{4}$ in (6mm) outside the sewn lines and press each triangle outwards. Check the size of the unit is correct.

**Fig D** Making corner triangle units



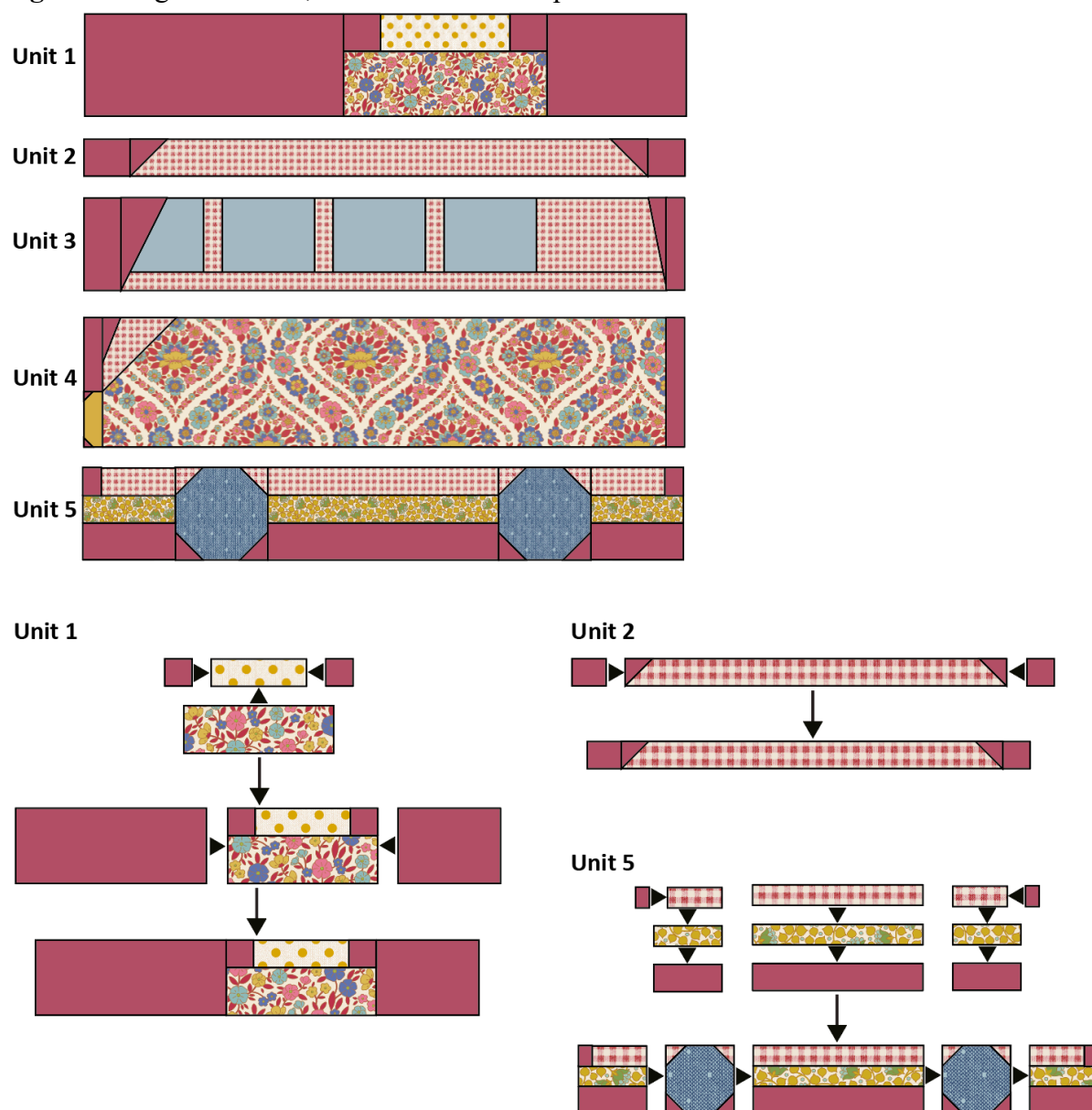
**8** The diagrams showing how the block is put together describe the five units that make up the block (see **Fig E**). Units 1, 2 and 5 are straightforward and are described first. Units 3 and 4 are more complicated as they need a special technique to show how the narrow, angled triangles are sewn.

**Unit 1:** Follow **Fig E**, laying out the pieces and then sewing them together as shown.

**Unit 2:** Follow **Fig E**, making the units that need corner triangles first. Lay out the pieces for the unit and sew them together as shown.

**Unit 5:** Follow **Fig E**, making the units that need corner triangles first. Lay out the pieces for the unit and sew them together as shown.

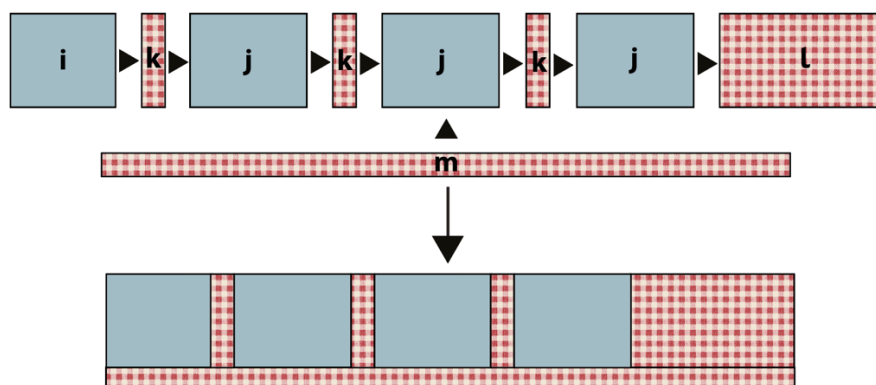
**Fig E** Making the Units 1, 2 and 5 for the Campervan block



**9 Unit 3:** To make this unit sew the rectangles together first, as shown in **Fig F**.

**Fig F** Making Unit 3 for a Campervan block

Piecing the rectangles



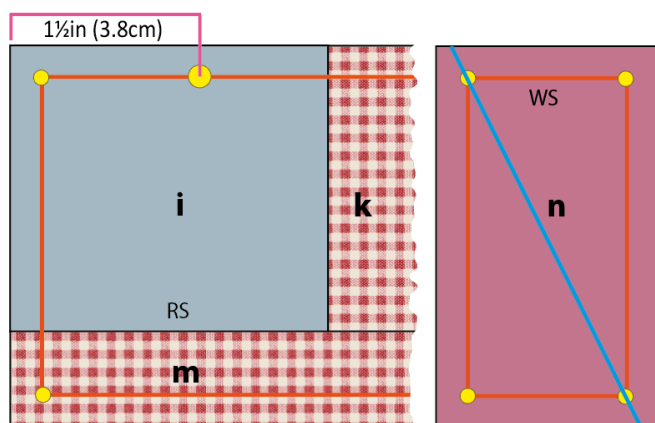


**10** Once this rectangles part has been sewn, the elongated triangles can be added. **Fig G** shows how the triangle on the left-hand side is sewn (shape **n**). The method used is described here. (This method is used again for the **o** triangle on Unit 3 and the **w** triangle on Unit 4.)

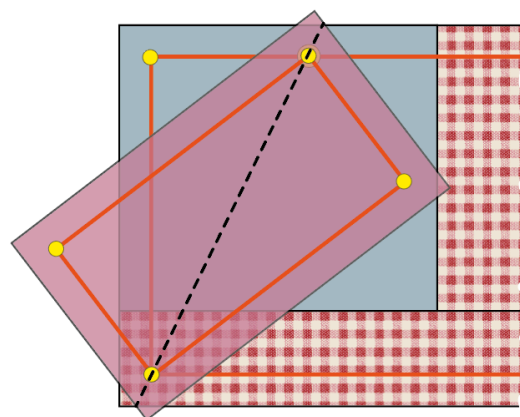
**11** **Fig G** shows a detail of the left-hand side of the rectangles unit you have just sewn. Take this unit and following **Fig G 1** and using a removable fabric marker, mark the  $\frac{1}{4}$ in (6mm) seam allowances (or just dots at the corners), marking on the right side (RS). On the unit also mark a dot  $1\frac{1}{2}$ in (3.8cm) in from the left-hand edge of the fabric (shown by a large yellow dot in the diagram). On the wrong side (WS) of the background fabric piece mark the  $\frac{1}{4}$ in (6mm) seam allowances (or just dots at the corners). Also on this fabric piece, mark a diagonal line from corner to corner of the seam allowance in the direction shown. Now place the background piece right sides together with the pieced unit, angling the smaller piece so the dots on the diagonal line match the dots on the fabric beneath (**Fig G 2**). Pin in place and then sew along the diagonal line. Trim excess fabric  $\frac{1}{4}$ in (6mm) from the sewn line (**Fig G 3**) and press the triangle outwards (**Fig G 4**).

**Fig G** Creating the angled triangle (**n**) on Unit 3

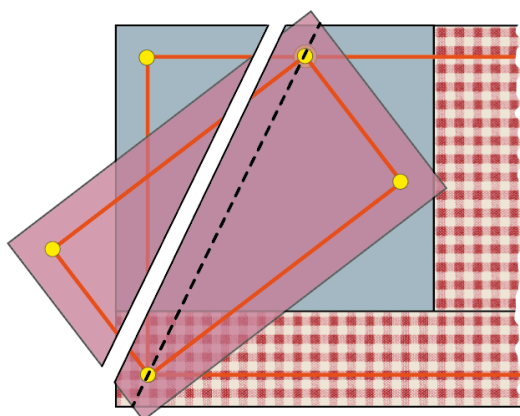
**1**



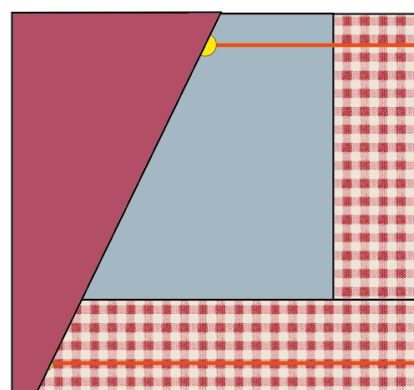
**2**



**3**

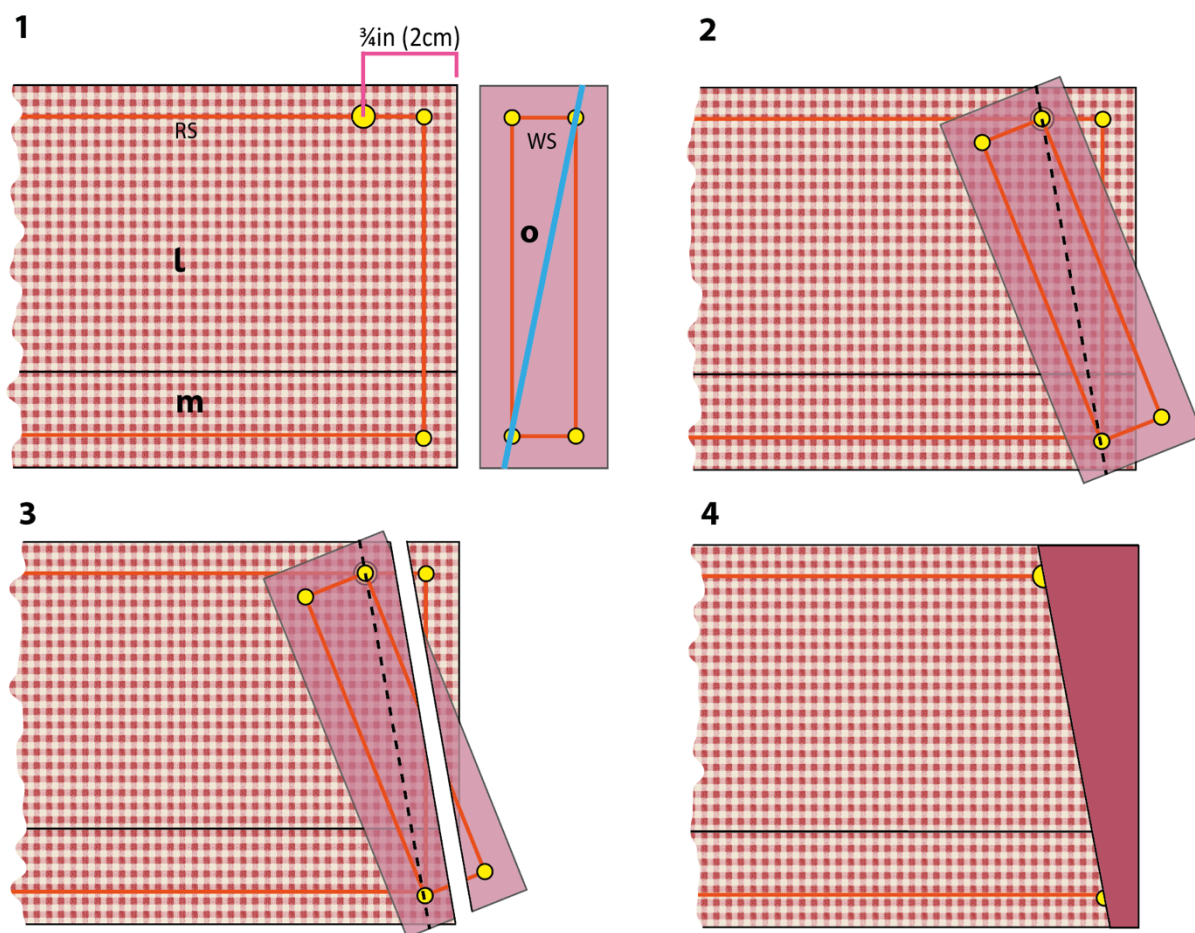


**4**



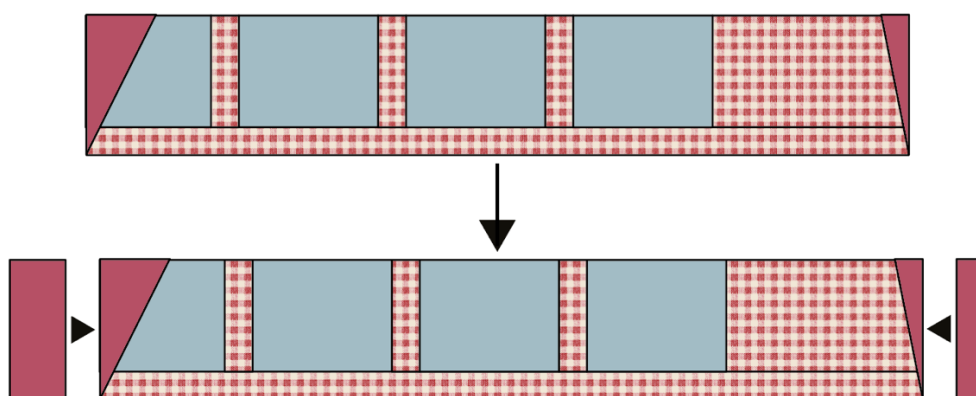
**12** Repeat this technique to sew the **o** triangle on the right-hand end of the rectangles unit. This time, mark the large dot  $\frac{3}{4}$ in (2cm) in from the right-hand edge of the pieced unit, as shown in **Fig H**. Position piece **o**, as shown, sew and trim excess, as before.

**Fig H** Creating the angled triangle (o) on Unit 3



**13** Unit 3 of the Campervan block can now be completed by the addition of the rectangles at either end, as shown in **Fig I**.

**Fig I** Completing Unit 3

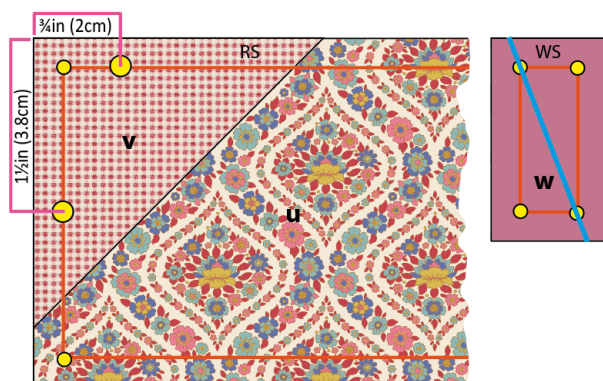


**14 Unit 4:** For this unit of the Campervan block one elongated triangle needs to be created. But before this is sewn, make a corner triangle (v) on the left-hand top corner of print piece **u**, using the method described in Step 7. Now follow **Fig J** to create the final triangle, using the same basic method as described in Step 11. This time, however, you will need to mark two dots, as shown in **Fig J 1**, marking one  $\frac{3}{4}$ in (2cm) in from the top left-hand edge of the pieced unit and one  $1\frac{1}{2}$ in (3.8cm) down from the top left-hand edge. Follow the rest of the diagram stages, positioning piece **w**, as shown, sewing and trimming excess, as before.

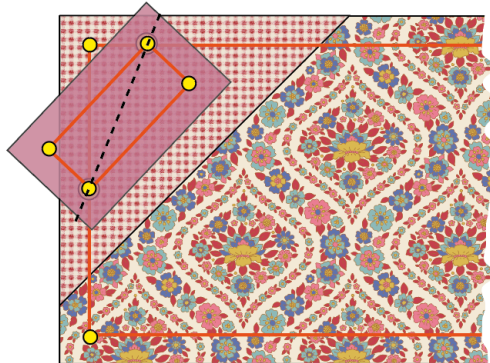


**Fig J** Creating the angled triangle (w) on Unit 4

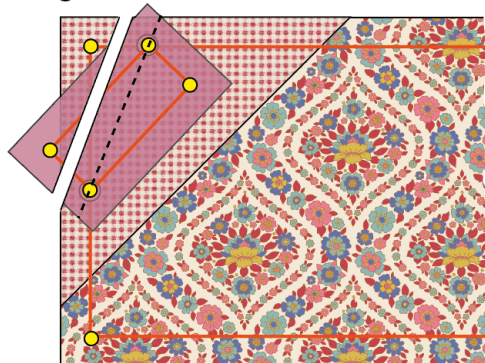
1



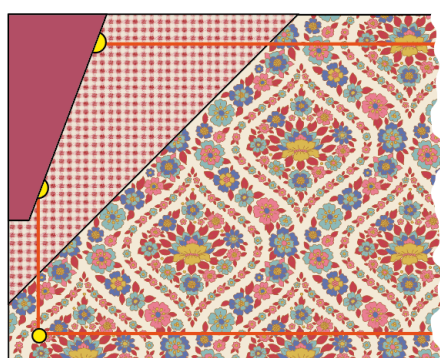
2



3

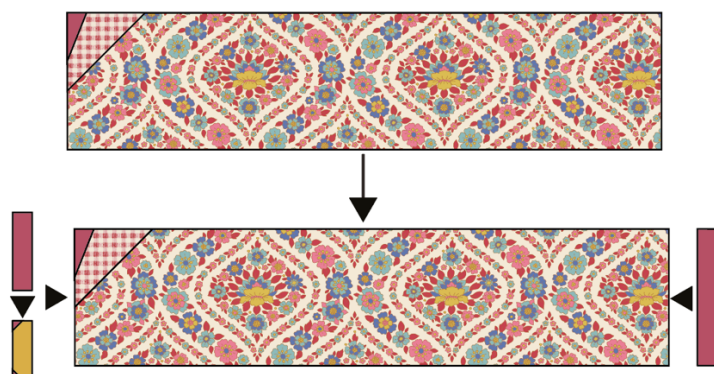


4



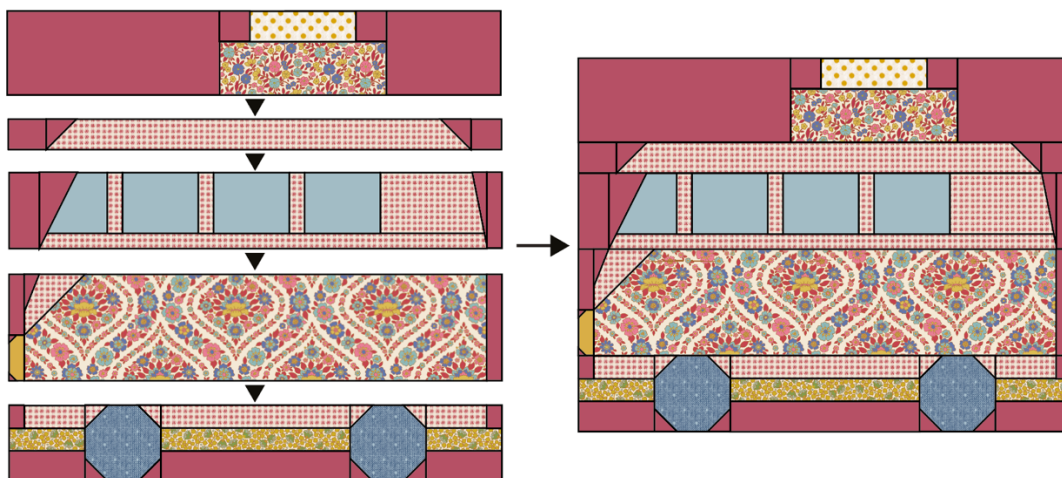
15 Unit 4 of the Campervan block can now be completed by the addition of the pieces at either end (a pieced rectangle and an unpieced section), as shown in **Fig K**.

**Fig K** Completing Unit 4



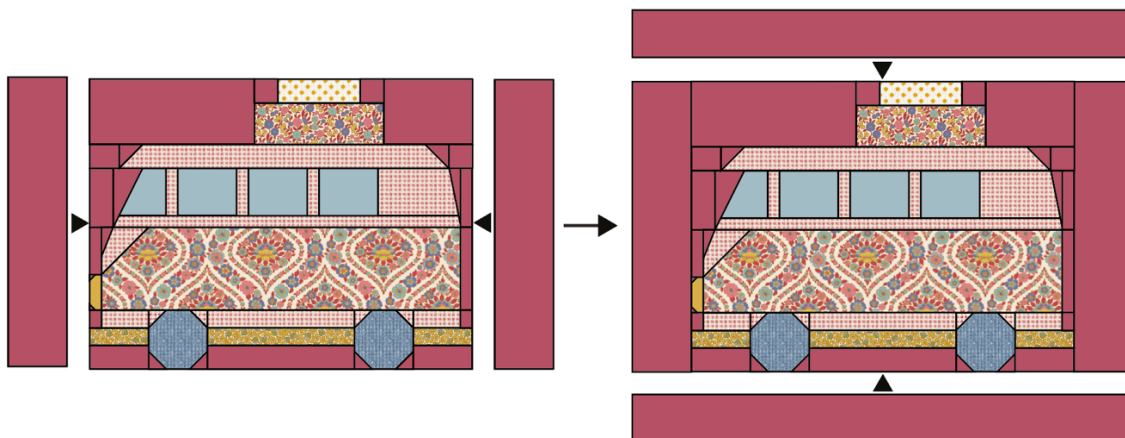
**16** Now assemble the Campervan block, as in **Fig L**. Check the block is 16 $\frac{3}{4}$ in x 12 $\frac{3}{4}$ in (42.5cm x 32.4cm).

**Fig L** Assembling a Campervan block



**17** Add the border to the block, as in **Fig M**. Sew the side borders on first and press seams towards the border. Add the top and bottom borders and press seams towards the border. Sew a button to the centre of each wheel.

**Fig M** Adding the border



## Quilting and Finishing

**18** Make a quilt sandwich of the patchwork, wadding (batting) and lining fabric (if using). Quilt as desired. Trim off excess wadding and lining fabric to match the patchwork size.

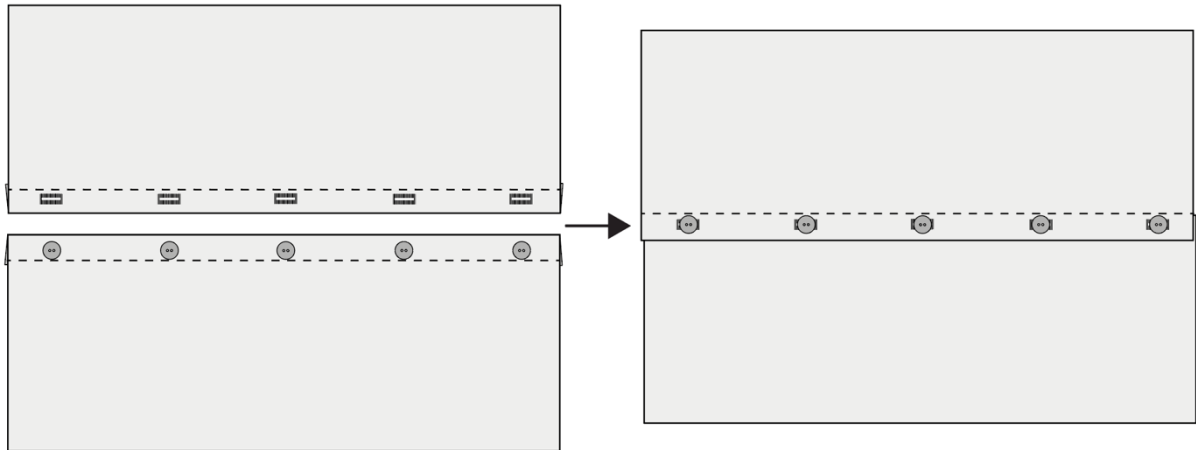
**19** To make up the pillow cover, take the two pieces of fabric for the cushion back and on one long edge of each piece, create a hem by turning the edge over by 1in (2.5cm), twice. Sew the seams with matching thread and press (**Fig N**). The diagram is shown in greys, so you can use the Tilda fabric and buttons suggested in the Materials list, or those of your choice.

**20** For the fastening, using your sewing machine, create five equally spaced buttonholes within the hem of one of the pieces. Sew five buttons onto the other piece, matching their positions to the buttonholes. Note: Instead of making buttonholes, you could use a hook and loop fastening, such as Velcro, to fasten the cover and sew on the buttons as a decorative feature.



**21** The pillow has a bound edge, so the pieces are assembled with right sides out, as follows. On the backing, fasten the buttons into the buttonholes and place the whole piece right side down. Place the quilted patchwork on top, right side up. Make sure the outer edges of all pieces are aligned. Pin or tack (baste) the layers together and then bind as normal. As you sew the binding in place it will fix the other layers together. Press the cover and insert a pillow pad to finish.

**Fig N** Making up the cover



# Campervan Pillow

(Blue colourway)

This fun pillow is great to sew on its own or as a companion to one of the Campervan quilts. It shows an iconic campervan, with an added decorative touch of buttons on the wheels. Four

other colourways are available for the pillow, telling the distinctive colour story of the Wallflower collection. Two pillows have colours reminiscent of the 1960s and 70s, with caramel, blue, ginger and thistle shades, while the other two pillows feature greens and pinks with hints of yellow and blue. All of the pillow instructions can be found on [tildasworld.com](http://tildasworld.com), as well as the two Campervan Quilts.

Difficulty rating \*\*\*

## Materials

- Fabric 1:  $\frac{3}{8}$ yd (40cm) – Chambray blue (160008) (background)
- Fabric 2: about a 9in (23cm) square – Tiny Dot blue (160067)
- Fabric 3: about a 5in (12.5cm) square – Solid mustard (120040)
- Fabric 4: about a 5in (12.5cm) square – Gingham yellow (160065)
- Fabric 5: about a 9in (23cm) square – Bellflower pink (110129)
- Fabric 6:  $\frac{1}{8}$ yd (15cm) – Stripe yellow (160062)
- Fabric 7: about a 9in (23cm) square – Chambray petrol (160005)
- Fabric 8:  $\frac{1}{8}$ yd (15cm) – Wallflower burgundy (100606)
- Fabric 9: about a 9in (23cm) square – Bellflower denim (110131)
- Lining fabric (optional): 24in x 19in (61cm x 48cm)
- Wadding (batting): 24in x 19in (61cm x 48cm)
- Fabric for back of pillow:  $\frac{3}{4}$ yd (75cm) – Beverly pink (100610)
- Binding fabric:  $\frac{1}{4}$ yd (25cm) – Gingham red (160087)
- Piecing and quilting threads
- Quilter's ruler, rotary cutter and mat
- Removable fabric marker
- Two buttons for wheel decoration – Wallflower buttons red/green 16mm (400070)
- Five buttons for fastening (optional) – Wallflower buttons red/green 16mm (400070)
- Pillow pad to fit cover

## Fabric Notes

Where a long eighth of a yard is given in the Materials list you could use a fat eighth instead., which is assumed to be approximately 10½in x 18in (26.7cm x 45.7cm).

The Chambray and Solid fabrics can be cut in any direction for the most economical use of the fabric.

## Finished Size

21¾in x 16¾in (55.3cm x 42.5cm)

## General Notes

- Fabric quantities are based on a usable width of 42in (107cm), unless otherwise stated.
- Measurements are in imperial inches with metric conversions in brackets – use only *one* system throughout (preferably inches). Width measurements are generally given first.
- Press fabric before cutting and trim as needed to square up the fabric pattern/weave, using a quilting ruler to cut the top raw edge at 90 degrees to the selvages.



- Use ¼in (6mm) seams unless otherwise instructed.
- Read all the instructions through before you start.
- Always make one complete block as a test before going on to make the remaining blocks.
- Abbreviations: RS = right side; WS = wrong side.

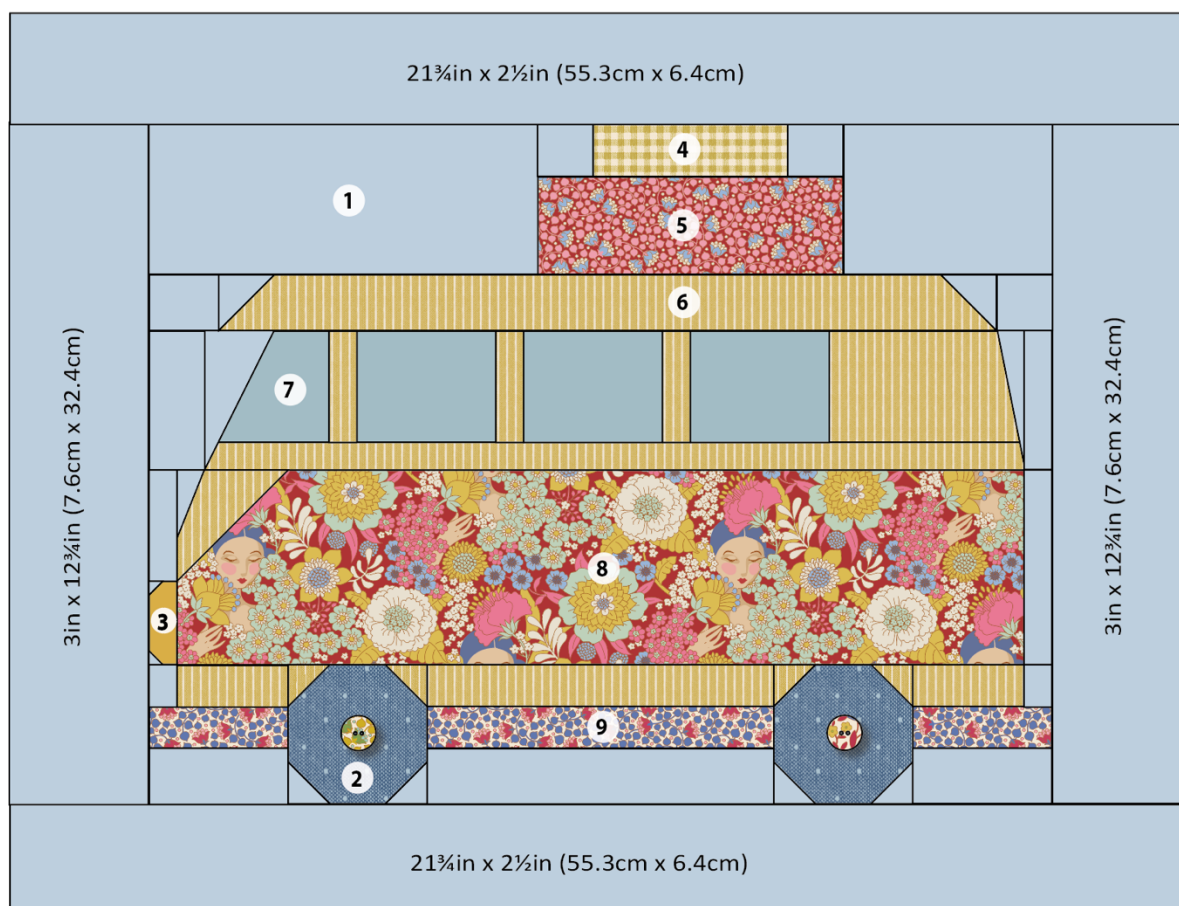
## Pillow Layout

**1** The pillow layout consists of one Campervan block, with a border on each side. See **Fig A** for the fabrics used and **Fig B** for the pillow layout, the cut sizes of the border pieces and the positions of the fabrics.

**Fig A** Fabric swatches (Campervan Pillow – blue)



**Fig B** Pillow layout with cut sizes of the border pieces and fabric positions



## Cutting Out

2 Start by cutting the border pieces from the background fabric (Fabric 1), as in **Fig B**.

- For the side borders, cut two strips 3in x 12<sup>3</sup>/<sub>4</sub>in (7.6cm x 32.4cm).
- For the top and bottom borders cut two strips 21<sup>3</sup>/<sub>4</sub>in x 2<sup>1</sup>/<sub>2</sub>in (55.3cm x 6.4cm).

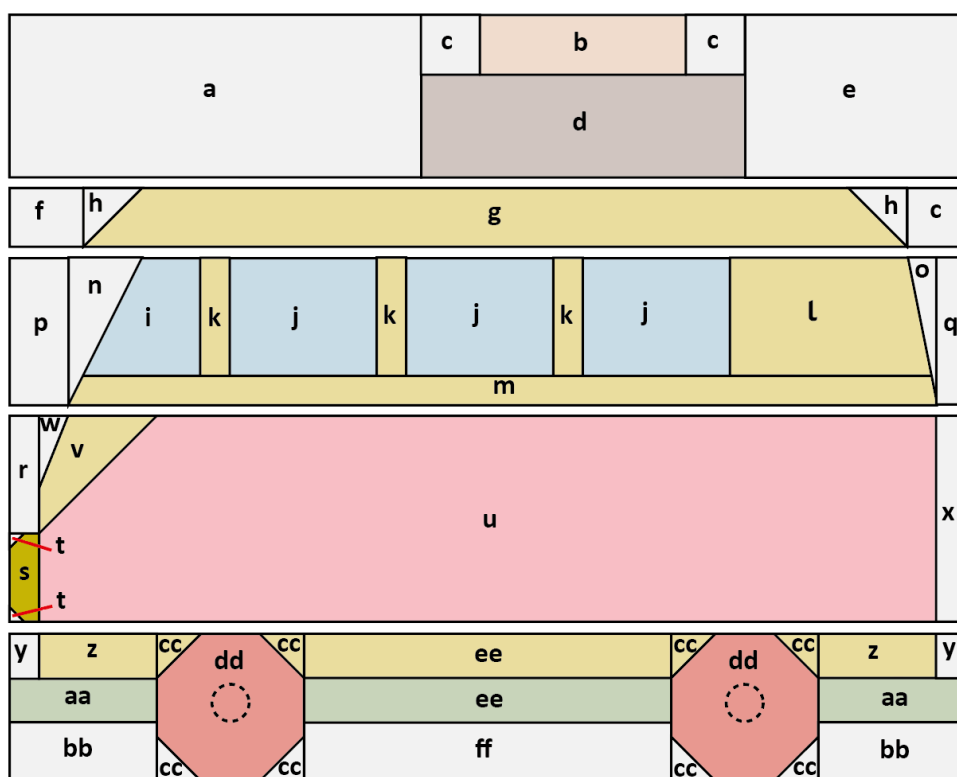
3 Cut the fabrics for the campervan using the measurements given in **Fig C**.

4 From the pillow back fabric, cut two pieces each 22in x 12in (56cm x 30.5cm).

5 Cut the binding fabric into three 2<sup>1</sup>/<sub>2</sub>in (6.4cm) x width of fabric strips. Sew together end to end and press seams open. Press the binding in half along the length, wrong sides together.

**Fig C** Cut measurements for the block

Sizes include <sup>1</sup>/<sub>4</sub>in (6mm) seam allowances. All pieces to be cut initially as squares or rectangles



### Campervan Block

- a** 7<sup>1</sup>/<sub>2</sub>in x 3<sup>1</sup>/<sub>4</sub>in (19cm x 8.3cm)
- b** 4in x 1<sup>1</sup>/<sub>2</sub>in (10.2cm x 3.8cm)
- c** 1<sup>1</sup>/<sub>2</sub>in (3.8cm) square
- d** 6in x 2<sup>1</sup>/<sub>2</sub>in (15.2cm x 5.7cm)
- e** 4<sup>1</sup>/<sub>4</sub>in x 3<sup>1</sup>/<sub>4</sub>in (10.8cm x 8.3cm)
- f** 1<sup>1</sup>/<sub>4</sub>in x 1<sup>1</sup>/<sub>2</sub>in (4.4cm x 3.8cm)
- g** 14<sup>1</sup>/<sub>2</sub>in x 1<sup>1</sup>/<sub>2</sub>in (36.8cm x 3.8cm)
- h** 1<sup>1</sup>/<sub>2</sub>in (3.8cm) square
- i** 2<sup>3</sup>/<sub>4</sub>in x 2<sup>1</sup>/<sub>2</sub>in (7cm x 6.4cm)
- j** 3in x 2<sup>1</sup>/<sub>2</sub>in (7.6cm x 6.4cm)
- k** 1in x 2<sup>1</sup>/<sub>2</sub>in (2.5cm x 6.4cm)
- l** 4in x 2<sup>1</sup>/<sub>2</sub>in (10.2cm x 6.4cm)
- m** 15<sup>1</sup>/<sub>4</sub>in x 1in (38.7cm x 2.5cm)
- n** 1<sup>1</sup>/<sub>4</sub>in x 3in (4.4cm x 7.6cm)
- o** 1in x 3in (2.5cm x 7.6cm)
- p** 1<sup>1</sup>/<sub>2</sub>in x 3in (3.8cm x 7.6cm)

- q** 1in x 3in (2.5cm x 7.6cm)
- r** 1in x 2<sup>1</sup>/<sub>2</sub>in (2.5cm x 6.4cm)
- s** 1in x 2in (2.5cm x 5.1cm)
- t** <sup>3</sup>/<sub>4</sub>in (2cm) square
- u** 15<sup>3</sup>/<sub>4</sub>in x 4in (40cm x 10.2cm)
- v** 2<sup>1</sup>/<sub>2</sub>in (6.4cm) square
- w** 1in x 1<sup>3</sup>/<sub>4</sub>in (2.5cm x 4.4cm)
- x** 1in x 4in (2.5cm x 10.2cm)
- y** 1in x 1<sup>1</sup>/<sub>4</sub>in (2.5cm x 3.2cm)
- z** 2<sup>1</sup>/<sub>2</sub>in x 1<sup>1</sup>/<sub>4</sub>in (6.4cm x 3.2cm)
- aa** 3in x 1<sup>1</sup>/<sub>4</sub>in (7.6cm x 3.2cm)
- bb** 3in x 1<sup>1</sup>/<sub>2</sub>in (7.6cm x 3.8cm)
- cc** 1<sup>1</sup>/<sub>4</sub>in (3.2cm) square
- dd** 3in (7.6cm) square
- ee** 6<sup>3</sup>/<sub>4</sub>in x 1<sup>1</sup>/<sub>4</sub>in (17.2cm x 3.2cm)
- ff** 6<sup>3</sup>/<sub>4</sub>in x 1<sup>1</sup>/<sub>2</sub>in (17.2cm x 3.8cm)

○ Button



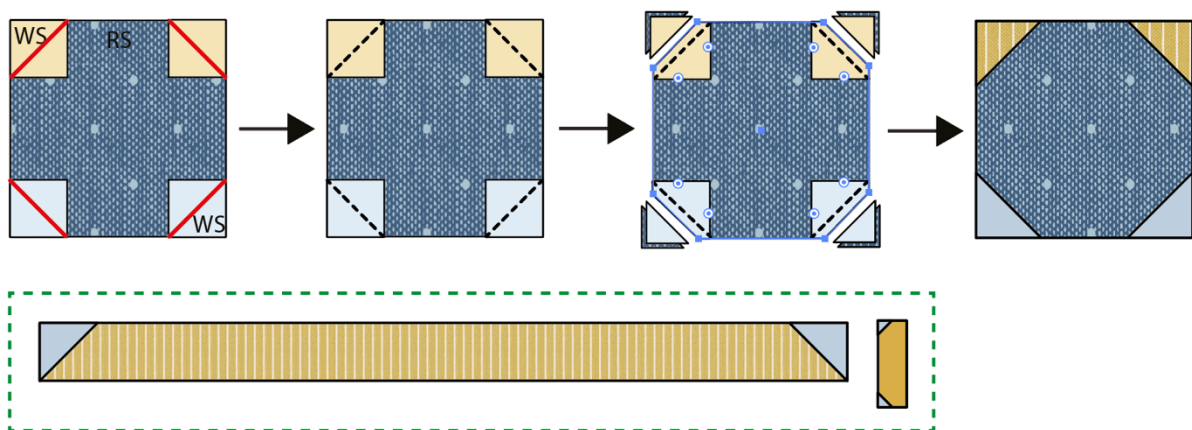
## Making the Block

**6** The Campervan block uses corner triangle units in various places, so we will describe this technique first. Refer back to it as needed as you make the block. Follow **Fig B** and **Fig C** carefully to select the correct fabrics and sizes.

**7 Fig D** (top part of diagram) shows the method using an example of a wheel unit, which has triangles on all four corners. Some other block units only need two triangles and examples are shown in the green dashed box (bottom of Fig D).

To make a corner triangle unit, choose the correct print fabric piece and the smaller fabric squares. Place the print fabric right side (RS) up. Take the four smaller squares and pencil mark a diagonal line on the wrong side (WS) of each square. Position the squares right sides together with the print rectangle, in the correct positions for that particular unit and with the marked lines in the directions shown in the diagram. Pin in place and then sew along each marked line. Trim off excess fabric  $\frac{1}{4}$ in (6mm) outside the sewn lines and press each triangle outwards. Check the size of the unit is correct.

**Fig D** Making corner triangle units



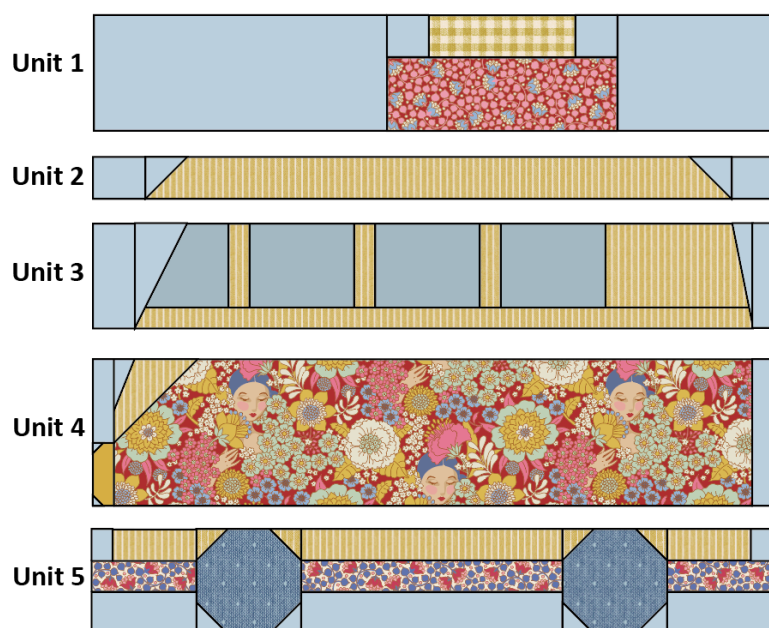
**8** The diagrams showing how the block is put together describe the five units that make up the block (see **Fig E**). Units 1, 2 and 5 are straightforward and are described first. Units 3 and 4 are more complicated as they need a special technique to show how the narrow, angled triangles are sewn.

**Unit 1:** Follow **Fig E**, laying out the pieces and then sewing them together as shown.

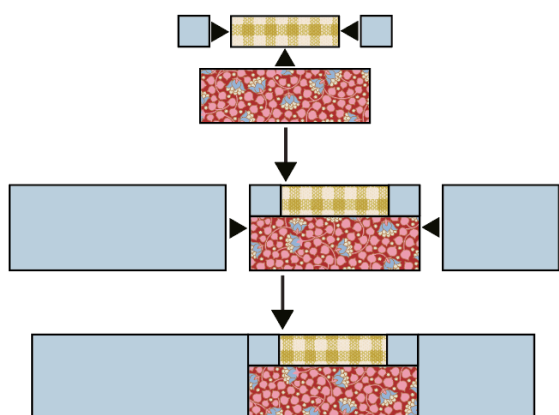
**Unit 2:** Follow **Fig E**, making the units that need corner triangles first. Lay out the pieces for the unit and sew them together as shown.

**Unit 5:** Follow **Fig E**, making the units that need corner triangles first. Lay out the pieces for the unit and sew them together as shown.

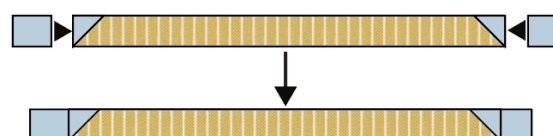
**Fig E** Making the Units 1, 2 and 5 for the Campervan block



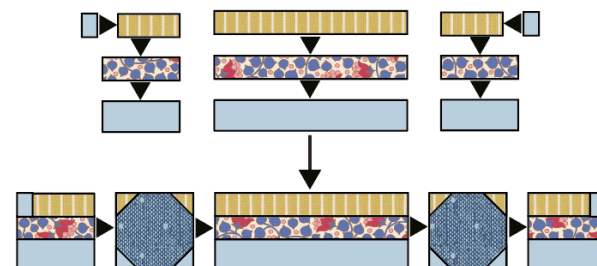
**Unit 1**



**Unit 2**



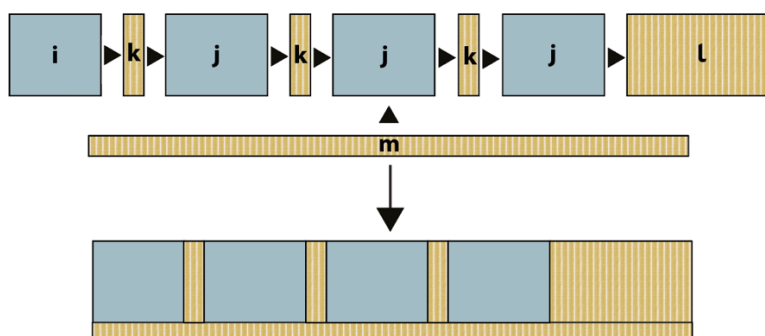
**Unit 5**



**9 Unit 3:** To make this unit sew the rectangles together first, as shown in **Fig F**.

**Fig F** Making Unit 3 for a Campervan block

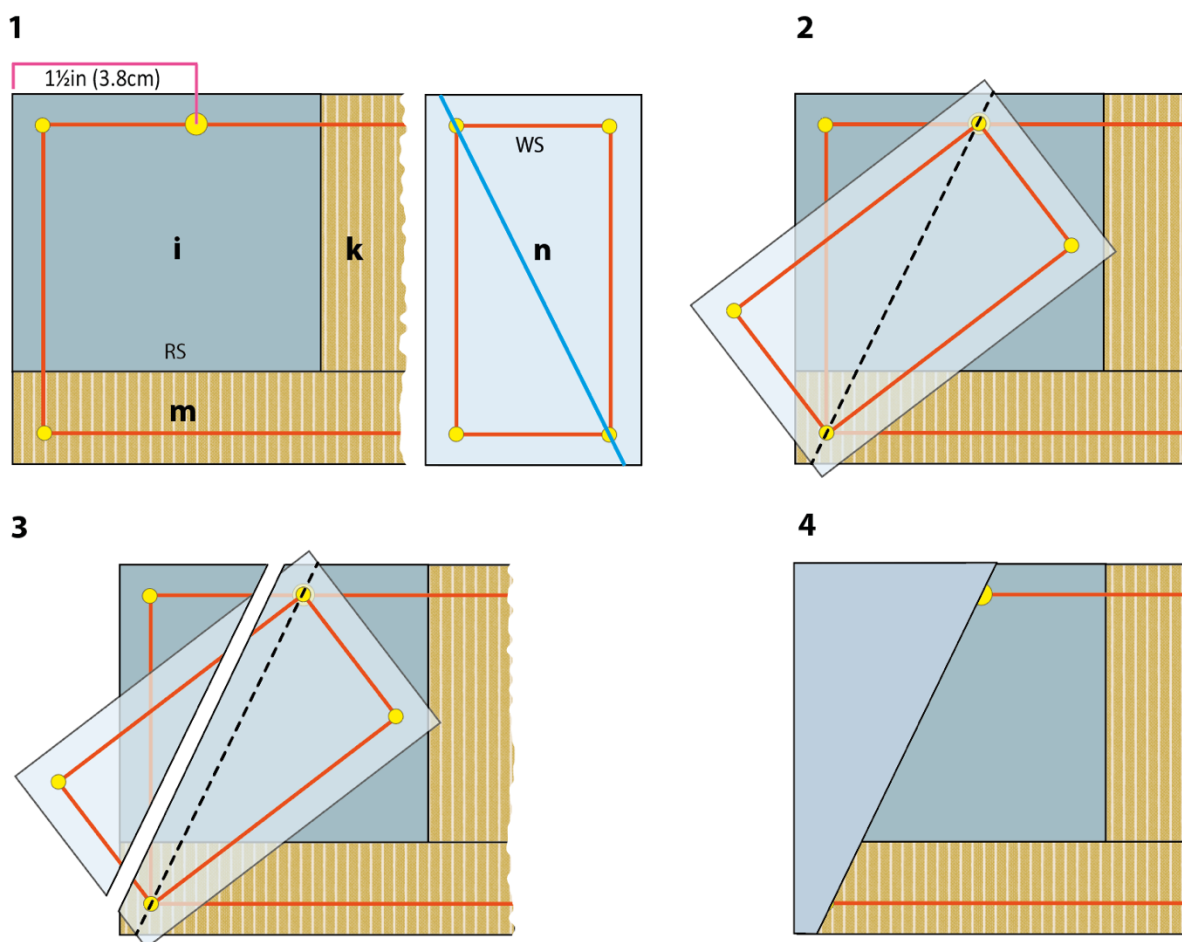
Piecing the rectangles



**10** Once this rectangles part has been sewn, the elongated triangles can be added. **Fig G** shows how the triangle on the left-hand side is sewn (shape **n**). The method used is described here. (This method is used again for the **o** triangle on Unit 3 and the **w** triangle on Unit 4.)

**11** **Fig G** shows a detail of the left-hand side of the rectangles unit you have just sewn. Take this unit and following **Fig G 1** and using a removable fabric marker, mark the  $\frac{1}{4}$ in (6mm) seam allowances (or just dots at the corners), marking on the right side (RS). On the unit also mark a dot  $1\frac{1}{2}$ in (3.8cm) in from the left-hand edge of the fabric (shown by a large yellow dot in the diagram). On the wrong side (WS) of the background fabric piece mark the  $\frac{1}{4}$ in (6mm) seam allowances (or just dots at the corners). Also on this fabric piece, mark a diagonal line from corner to corner of the seam allowance in the direction shown. Now place the background piece right sides together with the pieced unit, angling the smaller piece so the dots on the diagonal line match the dots on the fabric beneath (**Fig G 2**). Pin in place and then sew along the diagonal line. Trim excess fabric  $\frac{1}{4}$ in (6mm) from the sewn line (**Fig G 3**) and press the triangle outwards (**Fig G 4**).

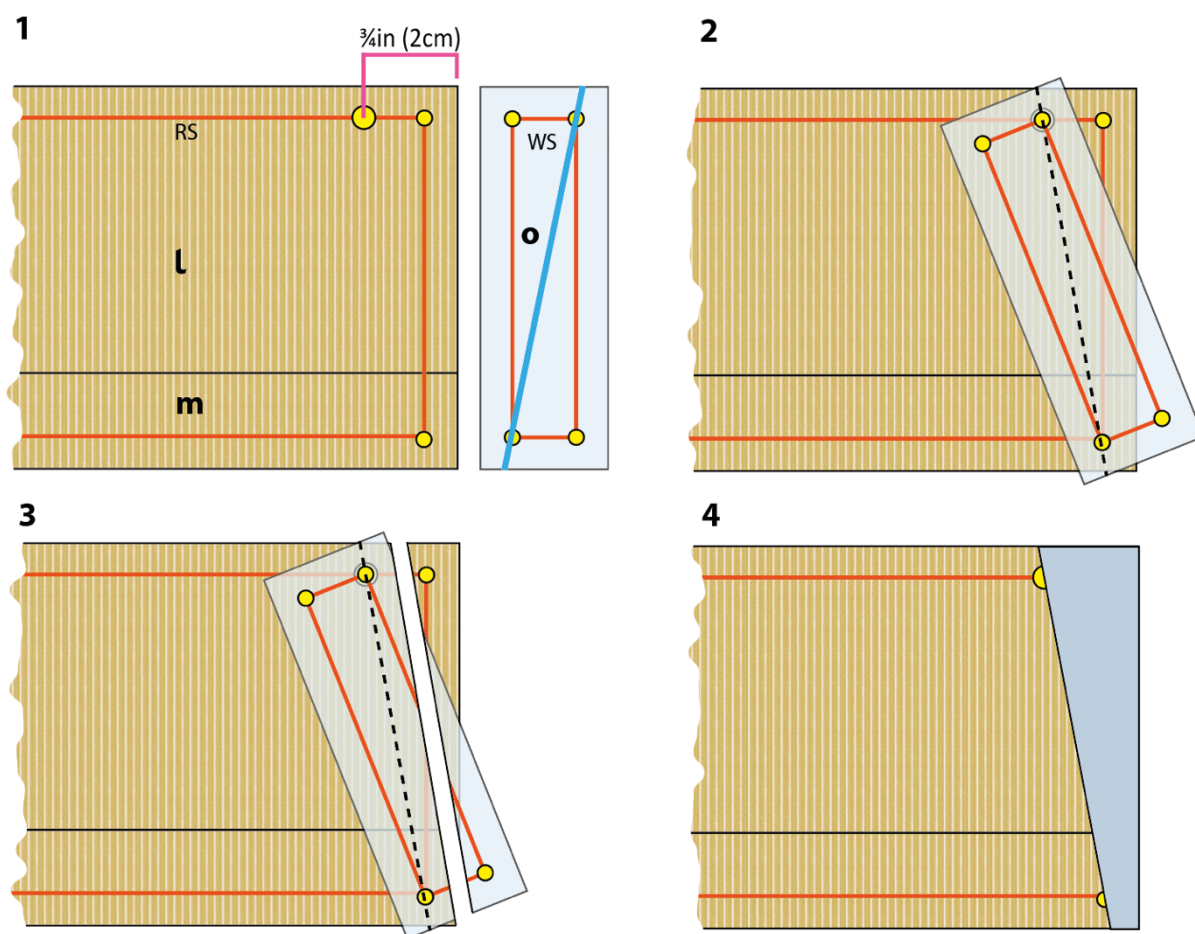
**Fig G** Creating the angled triangle (**n**) on Unit 3



**12** Repeat this technique to sew the **o** triangle on the right-hand end of the rectangles unit. This time, mark the large dot  $\frac{3}{4}$ in (2cm) in from the right-hand edge of the pieced unit, as shown in **Fig H**. Position piece **o**, as shown, sew and trim excess, as before.

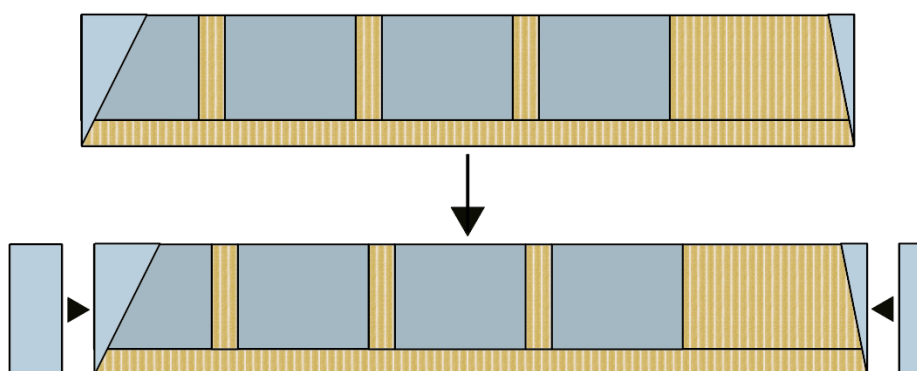


**Fig H** Creating the angled triangle (o) on Unit 3



**13** Unit 3 of the Campervan block can now be completed by the addition of the rectangles at either end, as shown in **Fig I**.

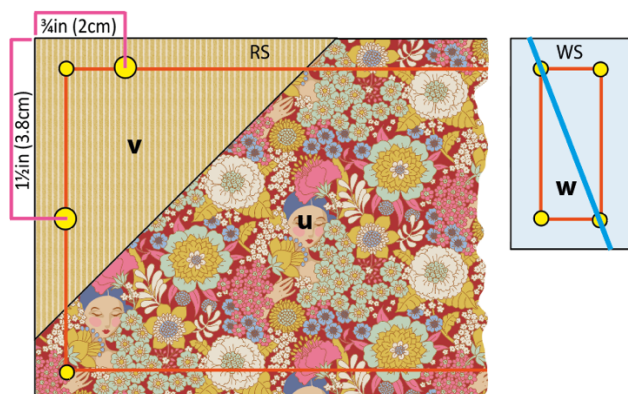
**Fig I** Completing Unit 3



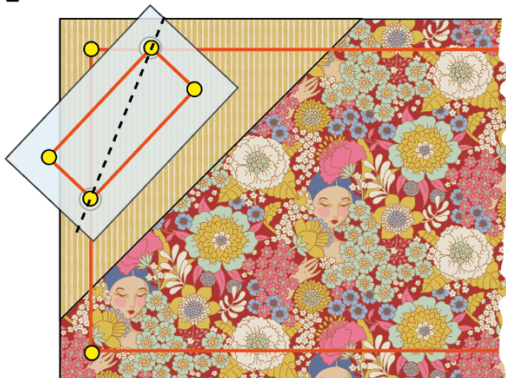
**14 Unit 4:** For this unit of the Campervan block one elongated triangle needs to be created. But before this is sewn, make a corner triangle (v) on the left-hand top corner of print piece u, using the method described in Step 7. Now follow **Fig J** to create the final triangle, using the same basic method as described in Step 11. This time, however, you will need to mark two dots, as shown in **Fig J 1**, marking one  $\frac{3}{4}$ in (2cm) in from the top left-hand edge of the pieced unit and one  $1\frac{1}{2}$ in (3.8cm) down from the top left-hand edge. Follow the rest of the diagram stages, positioning piece w, as shown, sewing and trimming excess, as before.

**Fig J** Creating the angled triangle (w) on Unit 4

1



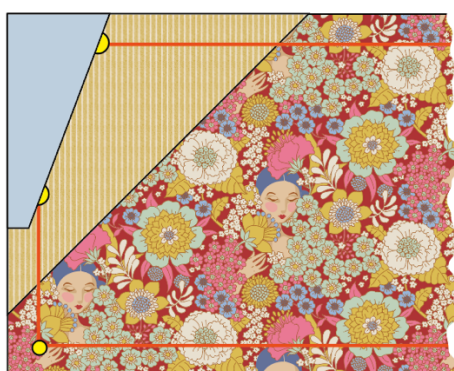
2



3

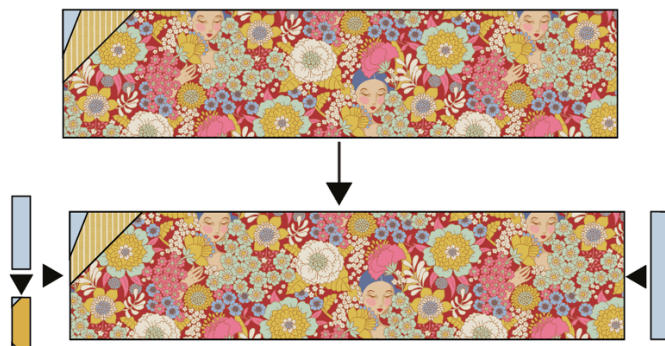


4



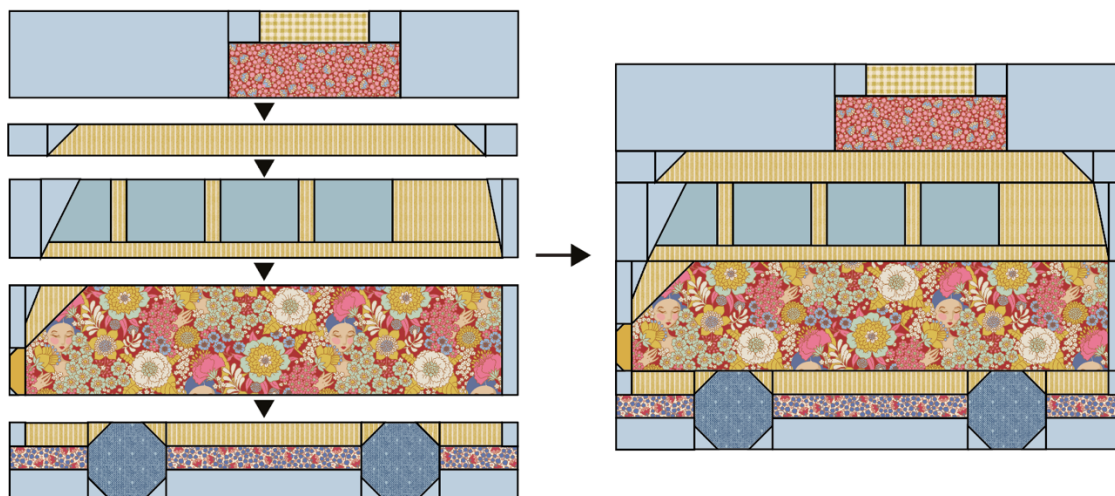
**15** Unit 4 of the Campervan block can now be completed by the addition of the pieces at either end (a pieced rectangle and an unpieced section), as shown in **Fig K**.

**Fig K** Completing Unit 4



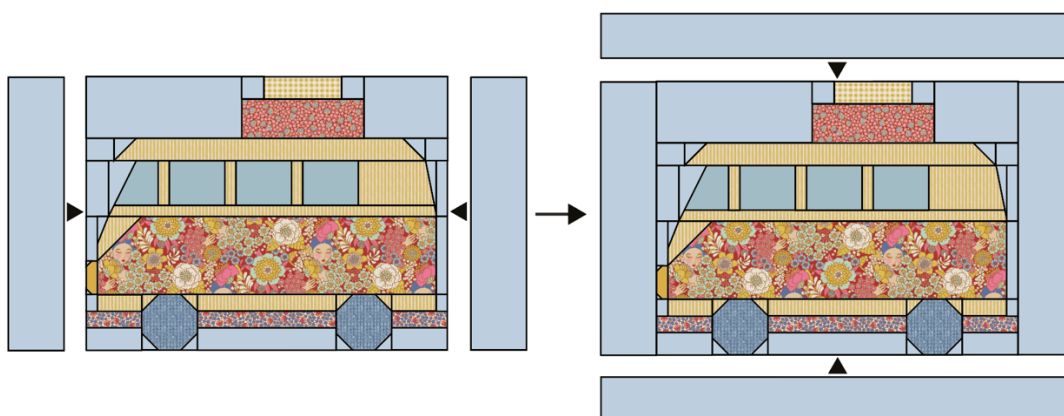
**16** Now assemble the Campervan block, as in **Fig L**. Check the block is 16¾in x 12¾in (42.5cm x 32.4cm).

**Fig L** Assembling a Campervan block



**17** Add the border to the block, as in **Fig M**. Sew the side borders on first and press seams towards the border. Add the top and bottom borders and press seams towards the border. Sew a button to the centre of each wheel.

**Fig M** Adding the border



## Quilting and Finishing

**18** Make a quilt sandwich of the patchwork, wadding (batting) and lining fabric (if using). Quilt as desired. Trim off excess wadding and lining fabric to match the patchwork size.

**19** To make up the pillow cover, take the two pieces of fabric for the cushion back and on one long edge of each piece, create a hem by turning the edge over by 1in (2.5cm), twice. Sew the seams with matching thread and press (**Fig N**). The diagram is shown in greys, so you can use the Tilda fabric and buttons suggested in the Materials list, or those of your choice.

**20** For the fastening, using your sewing machine, create five equally spaced buttonholes within the hem of one of the pieces. Sew five buttons onto the other piece, matching their positions to the buttonholes. Note: Instead of making buttonholes, you could use a hook and loop fastening, such as Velcro, to fasten the cover and sew on the buttons as a decorative feature.



**21** The pillow has a bound edge, so the pieces are assembled with right sides out, as follows. On the backing, fasten the buttons into the buttonholes and place the whole piece right side down. Place the quilted patchwork on top, right side up. Make sure the outer edges of all pieces are aligned. Pin or tack (baste) the layers together and then bind as normal. As you sew the binding in place it will fix the other layers together. Press the cover and insert a pillow pad to finish.

**Fig N** Making up the cover

