

Tilda®

# SOLDS

Colourplay Leaf Pillows



## Colourplay Leaf Pillows

These two lovely pillows have been designed to accompany the Colourplay Leaf Quilt. The pillows feature a curved block, like the quilt, but only eight of these blocks are used in each pillow, so making a pillow would be a good introduction to sewing curved seams. We have described one of the pillows in detail (Pillow 1) and at the end of these instructions we give the materials and layout needed for the other pillow (Pillow 2). Both pillows have the option of a pieced back. See [tildasworld.com](http://tildasworld.com) for the quilt instructions.

Difficulty Rating \*\*

### Materials (for Pillow 1)

- Fabric 1: 13in x 10in (33cm x 25cm) – Solid rain grey (120032)
- Fabric 2: 6in (15cm) square – Solid grey cloud (120031)
- Fabric 3: 10in (25cm) square – Solid dove white (120001)
- Fabric 4: 10in (25cm) square – Solid warm sand (120002)
- Fabric 5: 10in (25cm) square – Solid cappuccino (120007)
- Fabric 6: 13in x 10in (33cm x 25cm) – Solid rosewood (120034)
- Fabric 7: 10in (25cm) square – Solid terracotta (120035)
- Fabric 8: 13in x 10in (33cm x 25cm) – Solid salmon (120027)
- Fabric 9: 6in (15cm) square – Solid red (120021)
- Fabric 10: 20in x 10in (51cm x 25cm) – Solid pink (120026)
- Fabric 11: 10in (25cm) square – Solid lavender pink (120010)
- Fabric 12: 10in (25cm) square – Solid lilac (120030)
- Fabric 13: 10in (25cm) square – Solid aubergine (120036)
- Fabric 14: 6in (15cm) square – Solid lupine (120013)
- Fabric 15: 10in (25cm) square – Solid cornflower (120024)
- Fabric 16: 6in (15cm) square – Solid sky teal (120023)
- Fabric 17: 10in (25cm) square – Solid soft teal (120003)
- Fabric 18: 10in (25cm) square – Solid fern green (120025)
- Fabric 19: 13in x 10in (33cm x 25cm) – Solid lime green (120028)
- Fabric 20: 10in (25cm) square – Solid pale yellow (120022)
- Wadding (batting): 30in x 23in (76.2cm x 58.4cm)
- Lining fabric (optional): 30in x 23in (76.2cm x 58.4cm)
- Fabric for back of pillow if using your choice of a single fabric:  $\frac{7}{8}$ yd (80cm) **OR**  
Fabric for back of pillow if making the pieced backing described: refer to Step 7 for fabrics needed
- Binding fabric:  $\frac{1}{4}$ yd (25cm) – Solid dove white (120001)
- Six buttons for pillow fastening (optional) – Chambray Basic Buttons  $\frac{5}{8}$ in (16mm) diameter (400043 or 400044)
- Piecing and quilting threads
- Quilter's ruler, rotary cutter and mat
- Pillow pad to fit cover

### Finished Size

28½in x 21½in (72.4cm x 54.6cm)

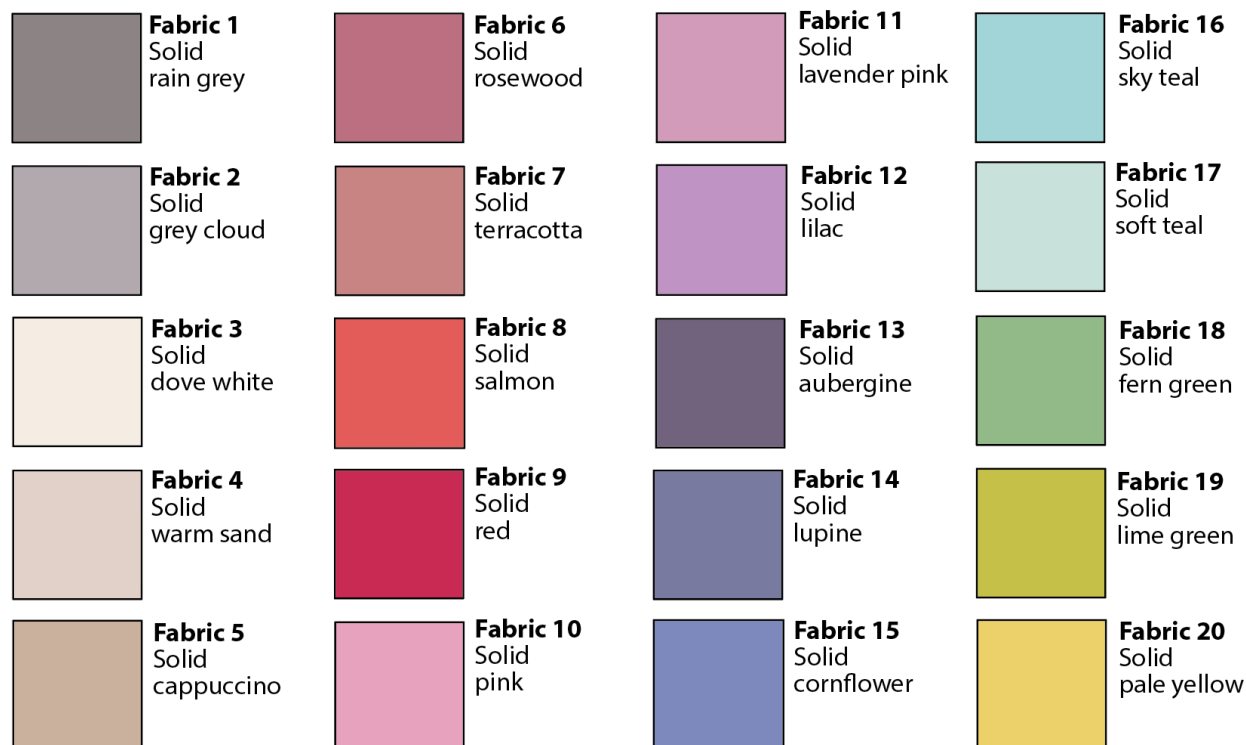
## General Notes

- Fabric quantities are based on a usable width of 42in (107cm), unless otherwise stated.
- Measurements are in imperial inches with metric conversions in brackets – use only *one* system throughout (preferably inches).
- Width measurements are generally given first.
- Press all fabrics before cutting.
- Use ¼in (6mm) seams unless otherwise instructed.
- Read all the instructions through before you start.

## Pillow Layout

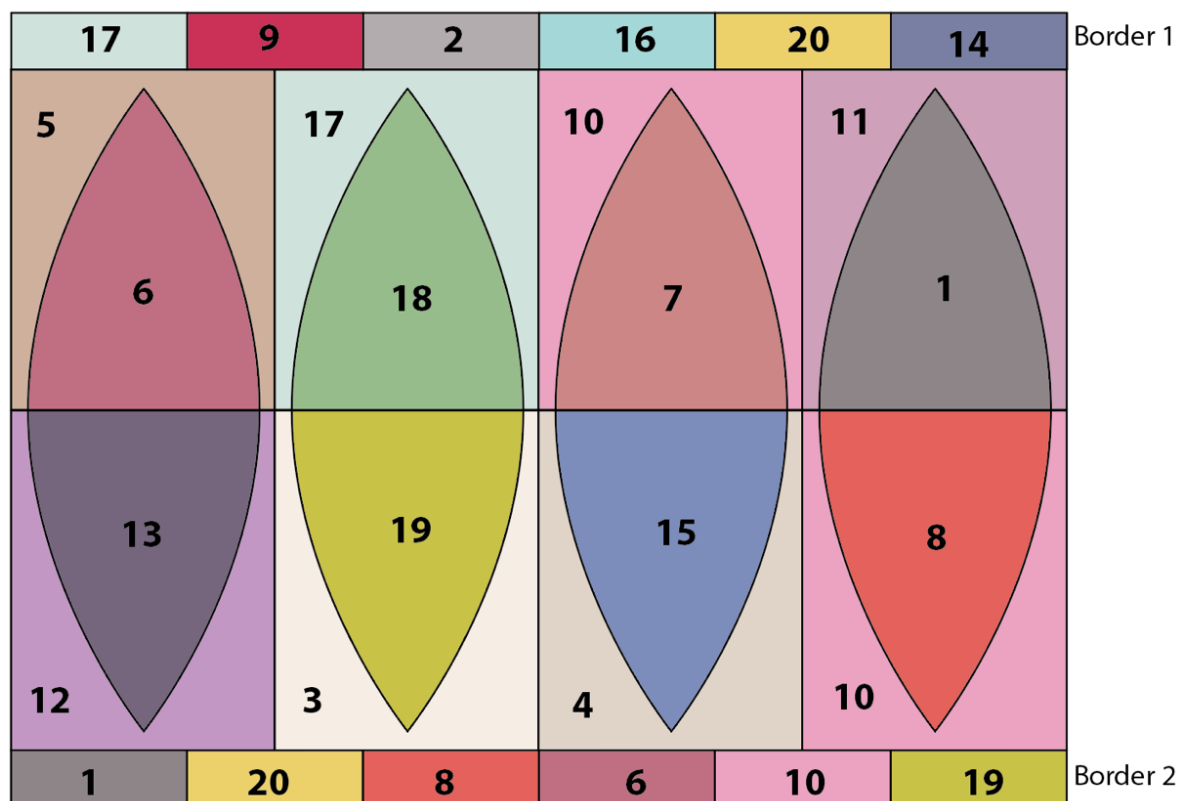
1 The pillow uses eight curved blocks in a variety of colour combinations. A narrow border at the top and bottom of the pillow is made up of rectangles in mixed colours. See **Fig A** for the fabrics used and **Fig B** for the pillow layout and positions of the fabrics. It is wise to make one block first from scrap fabric, as a test block, to check your measuring and cutting and to practise the curved seam technique.

**Fig A** Fabric swatches (Colourplay Leaf Pillow 1)



**Fig B** Pillow layout and fabric positions

Numbers indicate fabrics used – see Fig A



### Cutting Out

**2** The fabrics for the blocks need to be cut out with Pattern A and Pattern B and these are provided full size, with seam allowances included.

**Pattern A shape:** This is symmetrical so it can be placed on the right side or wrong side of the fabric when marking. Solid fabrics often look the same on both sides, but we will still say “right side” or “wrong side” in case you are using other Tilda fabrics.

**Pattern B shapes:** These are not symmetrical and occur as two shapes – Pattern B and Pattern B Reversed (a flipped/reflected version of Pattern B). It is quicker to cut out these shapes with their straight edges together, as in **Fig C**.

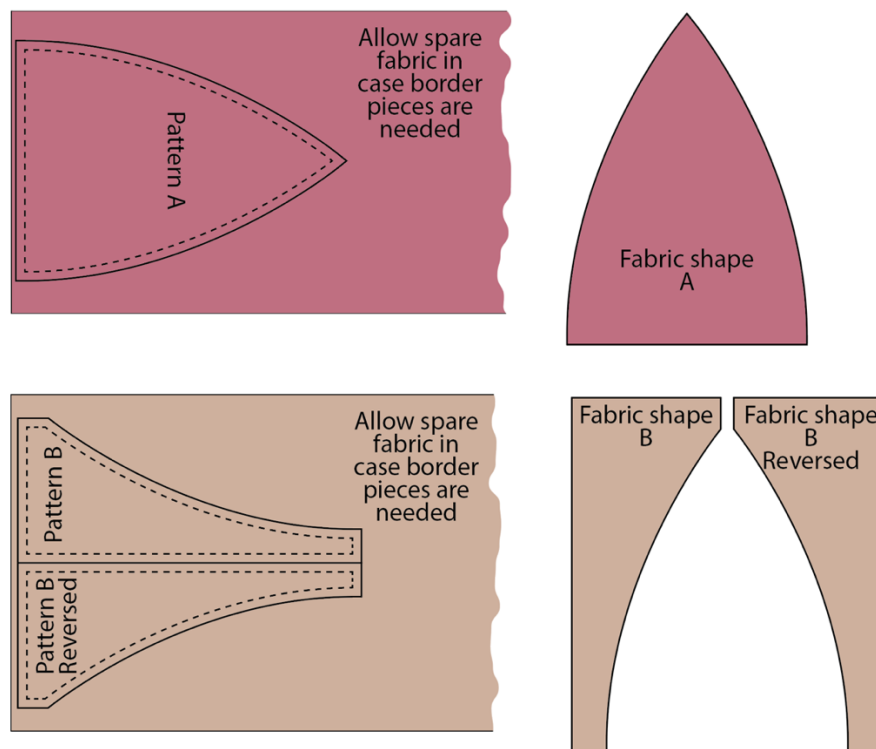
**3** When cutting, be economical and keep all the fabric offcuts to cut the border rectangles. Using the patterns, cut the following shapes (referring to the next step for detailed instructions on marking and cutting the shapes).

- Cut one Pattern A from Fabrics 1, 6, 7, 8, 13, 15, 18 and 19.
- Cut one Pattern B and B Reversed from Fabrics 3, 4, 5, 11, 12 and 17
- Cut two Pattern B and B Reversed from Fabric 10.

**4** To mark and cut the fabrics for the blocks, copy the patterns onto thick paper or thin card. When marking the shapes on the fabrics, use a pencil for marking pale fabrics and a light marker, such as chalk, for marking dark fabrics. For the most economical use of the fabric, draw the patterns rotated horizontally, fitting them together with minimal wastage, as shown in **Fig C**. **Note:** this orientation is fine for solid fabrics but if making the quilt with print fabrics that have a pattern direction, then you might prefer to rotate the paper patterns to a vertical layout.

Position the paper pattern on the fabric and mark around the shape, ensuring it does not move as you draw around it. Use sharp scissors to cut out the shape. When you have marked and cut out a shape, always place the paper pattern back on top of the shape to check that the fabric shape is *exactly* the same as the paper. Refer to **Fig B** for the positions of the fabrics in the blocks.

**Fig C** Marking the patterns on the fabrics

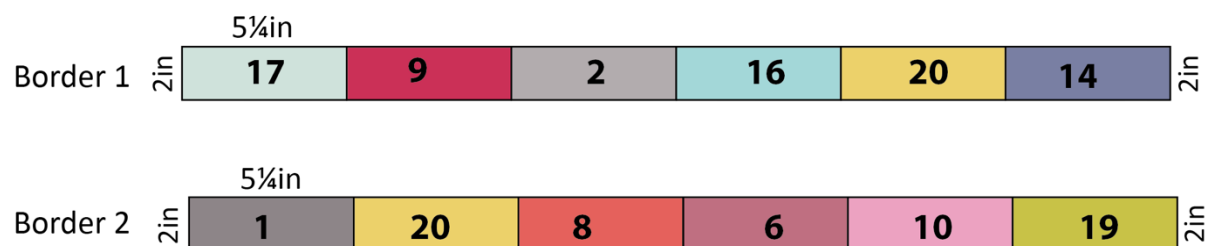


**5** There are two borders, 1 and 2, both made up of rectangles. The pieces are each cut  $5\frac{1}{4}$ in x 2in (13.4cm x 5.1cm), as shown in **Fig D**. If you cut sparingly, you should have enough fabric left over for the border on the pieced backing (if choosing this option).

- For Border 1, cut one piece  $5\frac{1}{4}$ in x 2in (13.4cm x 5.1cm) from Fabrics 17, 9, 2, 16, 20 and 14.
- For Border 2, cut one piece  $5\frac{1}{4}$ in x 2in (13.4cm x 5.1cm) from Fabrics 1, 20, 8, 6, 10 and 19.

**Fig D** Cutting the border rectangles

Bold numbers indicate fabrics used (see Fig A)



**6 If using a single fabric for the back:** Cut the fabric for the back of the pillow into two pieces, each 28½in x 14in (72.4cm x 35.5cm).

**7 If making a pieced backing:** You will need the following fabrics – the three larger pieces need to be bought in *addition* to the quilt front fabrics.

- One piece of Solid soft teal 28½in x 9in (72.4cm x 23cm).
- One piece of Solid soft teal 28½in x 3¾in (72.4cm x 9.5cm).
- One piece of Solid cornflower 28½in x 14½in (72.4cm x 36.8cm).

Border 2 is repeated on the pieced backing, and you should be able to cut the rectangles from fabric offcuts from the front of the pillow.

- Cut one piece 5¼in x 2in (13.4cm x 5.1cm) from Fabrics 1, 20, 8, 6, 10 and 19.

**8** Cut the binding fabric into three strips 2½in (6.4cm) x width of fabric. Sew them together end to end and press seams open. Press in half along the length, wrong sides together.

### Making a Block

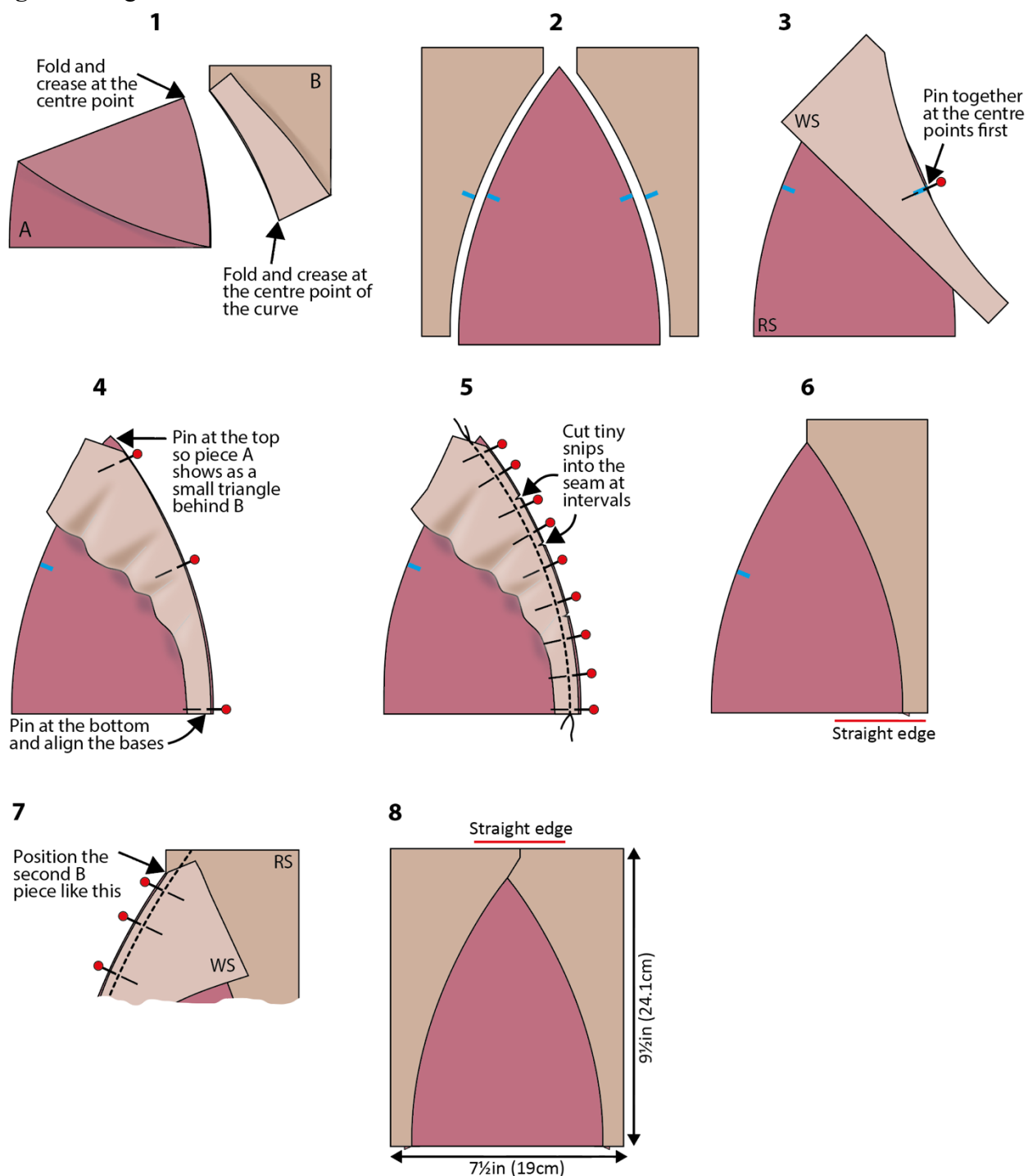
**9** It's important that the block ends up 7½in (19cm) wide x 9½in (24.1cm) tall, so it's wise to make the block first from scrap fabric to practise the curved seam technique (use scrap fabric to avoid wasting the proper fabrics). Use a *scant* ¼in (6mm) seam throughout the sewing of these curved seams (a scant ¼in is about a needle's width or so smaller than a full ¼in seam).

**10** To sew a curved seam refer to the stages in **Fig E**. Start by taking a fabric piece A and fold it in half so the top point touches one base corner, as shown in **Fig E 1**. Crease or mark this centre point (shown as blue lines on **Fig E 2**). Do the same with the B fabric pieces, folding *only* the curved section, as shown.

**11** Place the pieces right sides (RS) together and pin at the centre points first (**Fig E 3**). Pin at the bottom, aligning the straight edges. Now pin at the top but this time have piece B lower, so a small triangle of piece A shows beneath B, as shown in **Fig E 4**. Add more pins, easing the pieces so their curved edges align neatly (**Fig E 5**). Now sew the seam, taking your time to sew carefully all along the curve. Before pressing the seam outwards, snip into the seam allowance at intervals, cutting only about ⅛in (3mm) into the seam. Press piece B into position (**Fig E 6**). The bottom of piece B should form a straight line with piece A.

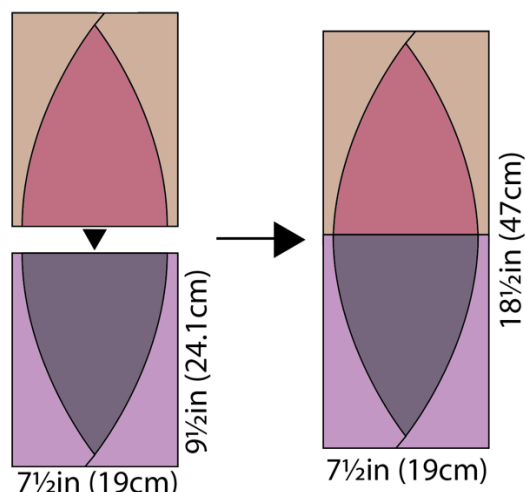
**12** Repeat this process to pin the other piece B into place. This time, position the piece as shown in **Fig E 7**. Sew the seam and then press outwards. The bottom and top of the B pieces should form a straight line with piece A, as shown in **Fig E 8**. Check the block is 7½in x 9½in (19cm x 24.1cm).

**13** Make the rest of the blocks in the same way, following **Fig B** for the fabric combinations.

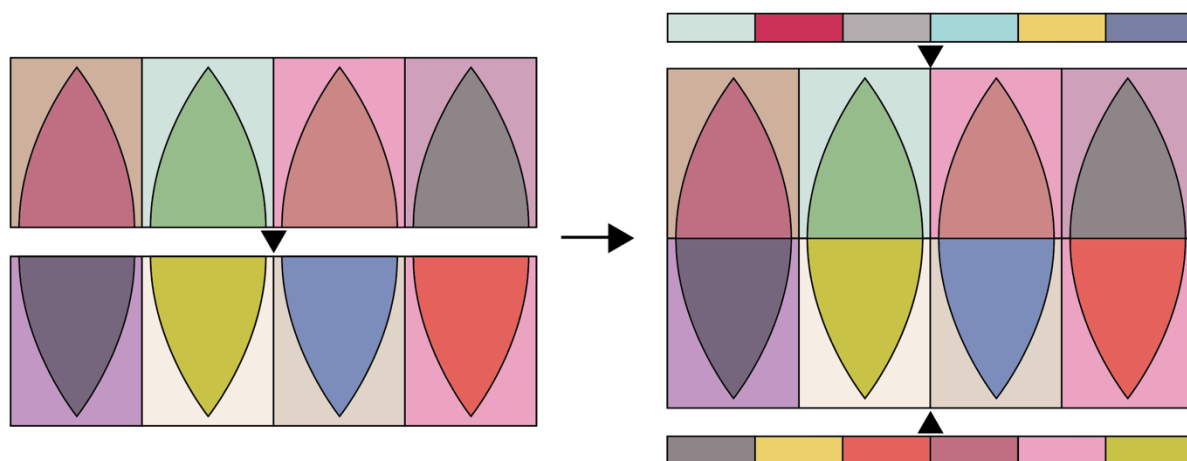
**Fig E Sewing a curved seam**

### Assembling the Patchwork

**14** Once all the blocks are made, take the first two blocks and sew them together into a pair (a double block) as shown in **Fig F**, matching the curved seams carefully and using a normal 1/4 in (6mm) seam. Press the seam open. Check this double block is 7 1/2 in x 18 1/2 in (19cm x 47cm). Pair the other blocks in this way.

**Fig F** Sewing two blocks together

**15** Once the blocks are sewn into double blocks, lay out the four double blocks as shown in **Fig G**. Sew the double blocks together into a row, matching seams carefully, and press. Take the border rectangles and sew them together into Border 1 and Border 2 (see **Fig D** for the fabric order). Press the seams open or to one side. Now add Border 1 to the top of the patchwork by matching the centre point of the border with the centre point of the patchwork. Sew in place using a normal  $\frac{1}{4}$ in (6mm) seam. Repeat with Border 2 on the bottom of the patchwork and press. The borders may be a tiny bit longer than the patchwork, so trim excess if needed. Check the patchwork is  $28\frac{1}{2}$ in x  $21\frac{1}{2}$ in (72.4cm x 54.6cm).

**Fig G** Assembling the patchwork

## Quilting and Finishing

**16** Make a quilt sandwich of the patchwork, wadding (batting) and lining fabric (if using). Quilt as desired. Trim off excess wadding and lining fabric to match the patchwork size.

### Making Up the Cover if Using a Single Fabric

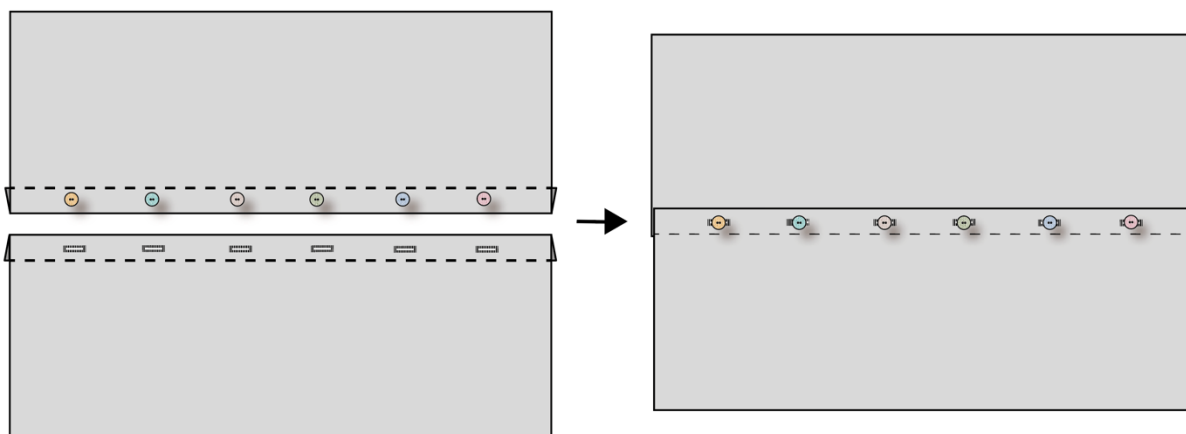
**17** To make up the pillow cover if using a single fabric for the pillow back, take the two pieces of fabric and on one long side, create a hem by turning the edge over by 1in (2.5cm), twice. Sew the seams with matching thread and press (**Fig H**).



**18** For the fastening, use your sewing machine to create six equally spaced buttonholes within the hem of the bottom piece. Sew six buttons onto the hem of the upper piece, matching their positions to the buttonholes. **Note:** instead of making buttonholes, you could use a hook and loop fastening, such as Velcro, to fasten the cover and then sew on the buttons as a decorative feature. (The buttons are shown in **Fig J**.)

**19** The pillow has a bound edge, so the pieces are assembled with right sides out, as follows. Place the quilted patchwork right side down. On the backing, fasten the buttons into the buttonholes and then place the whole piece on top of the patchwork, right side up. Check it is the same size as the patchwork, trimming the raw edges if need be (**Fig H**). Make sure the outer edges of all pieces are aligned. Pin or tack (baste) the layers together and then bind as normal. As you sew the binding in place it will fix the other layers together. Press the cover and insert a pillow pad to finish.

**Fig H** Making up a single fabric cover



### Making Up the Cover if Creating a Pieced Back

**20** To make up the pillow cover if using a pieced back, take the 3<sup>3</sup>/<sub>4</sub>in (9.5cm) deep strip of soft teal and the cornflower fabric piece, and on one long side, create a hem by turning the edge over by 1in (2.5cm), twice. Sew the seams with matching thread and press (**Fig I 1**).

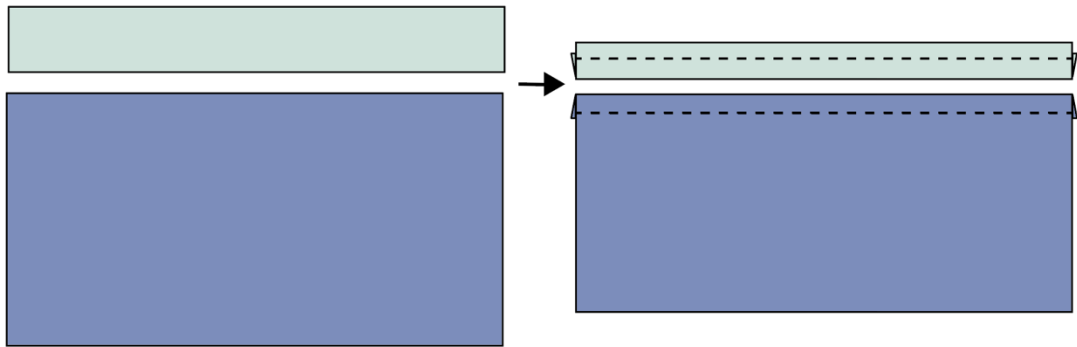
**21** For the fastening, use your sewing machine to create six equally spaced buttonholes within the hem of the bottom piece (see **Fig I 2**). Sew six buttons onto the hem of the narrow upper piece, matching their positions to the buttonholes. **Note:** instead of making buttonholes, you could use a hook and loop fastening, such as Velcro, to fasten the cover and then sew on the buttons as a decorative feature.

**22** Make the border by sewing the rectangles together (as you did before) and then sew this to the bottom of the 9in (23cm) deep piece of soft teal fabric (**Fig I 3**). Press the seam. Sew the hemmed piece of soft teal fabric to the border, with the folded edge at the bottom.

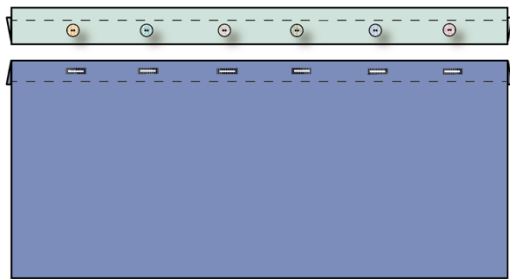
**23** Place the quilted patchwork right side down. On the backing, fasten the buttons into the buttonholes (**Fig I 4**) and then place the whole piece on top of the patchwork, right side up. Check the back is the same size as the patchwork – it may be a little bigger, so trim the raw edges as needed, making sure the outer edges of all pieces are aligned. Pin or tack (baste) the layers together and then bind as normal. Press the cover and insert a pillow pad to finish.

**Fig I** Making up a pieced cover

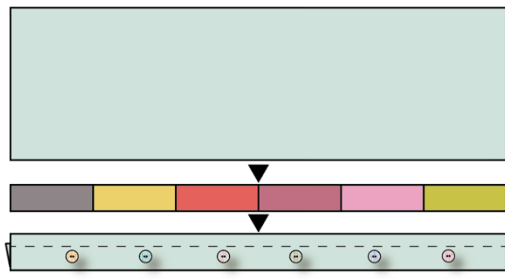
**1**



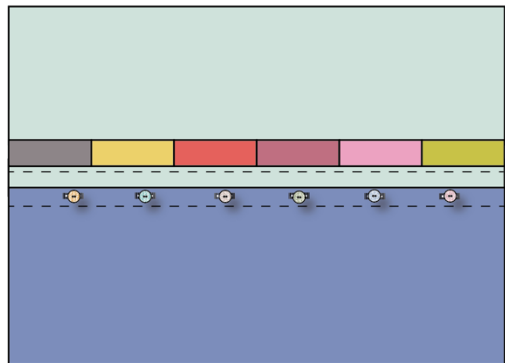
**2**



**3**

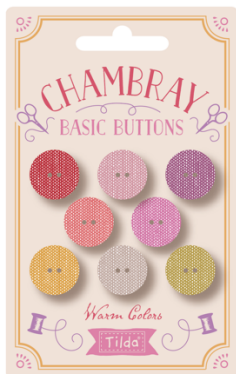


**4**

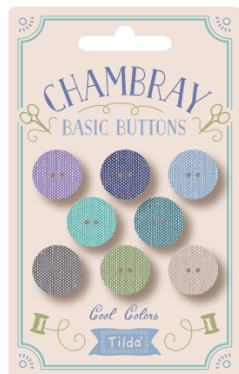


**Fig J** The buttons used

Chambray Basic Buttons  
Warm colours



Chambray Basic Buttons  
Cool colours



## Colourplay Leaf Pillow 2

This pillow uses the same instructions as Pillow 1, but with different fabrics. Use the Materials list here.

### Materials (for Pillow 2)

- Fabric 1: 10in (25cm) square – Solid dark granite (120033)
- Fabric 2: 6in (15cm) square – Solid rain grey (120032)
- Fabric 3: 10in (25cm) square – Solid grey cloud (120031)
- Fabric 4: 10in (25cm) square – Solid dove white (120001)
- Fabric 5: 10in (25cm) square – Solid dusty rose (120009)
- Fabric 6: 10in (25cm) square – Solid rosewood (120034)
- Fabric 7: 6in (15cm) square – Solid salmon (120027)
- Fabric 8: 13in x 10in (33cm x 25cm) – Solid red (120021)
- Fabric 9: 6in (15cm) square – Solid pink (120026)
- Fabric 10: 10in (25cm) square – Solid lavender pink (120010)
- Fabric 11: 10in (25cm) square – Solid thistle (120012)
- Fabric 12: 10in (25cm) square – Solid lilac mist (120011)
- Fabric 13: 13in x 10in (33cm x 25cm) – Solid lupine (120013)
- Fabric 14: 10in (25cm) square – Solid night blue (120029)
- Fabric 15: 10in (25cm) square – Solid sky teal (120023)
- Fabric 16: 10in (25cm) square – Solid soft teal (120003)
- Fabric 17: 10in (25cm) square – Solid blue sage (120008)
- Fabric 18: 10in (25cm) square – Solid petrol (120037)
- Fabric 19: 6in (15cm) square – Solid lime green (120028)
- Fabric 20: 13in x 10in (33cm x 25cm) – Solid pale yellow (120022)
- Wadding (batting): 30in x 23in (76.2cm x 58.4cm)
- Lining fabric (optional): 30in x 23in (76.2cm x 58.4cm)
- Fabric for back of pillow if using your choice of a single fabric:  $\frac{7}{8}$ yd (80cm) **OR**  
Fabric for back of pillow if making the pieced backing described: refer to Step 7 overleaf for fabrics needed
- Binding fabric:  $\frac{1}{4}$ yd (25cm) – Solid dove white (120001)
- Six buttons for pillow fastening (optional) – Chambray Basic Buttons  $\frac{5}{8}$ in (16mm) diameter (400043 or 400044)
- Piecing and quilting threads
- Quilter's ruler, rotary cutter and mat
- Pillow pad to fit cover

### Finished Size

28½in x 21½in (72.4cm x 54.6cm)

### General Notes

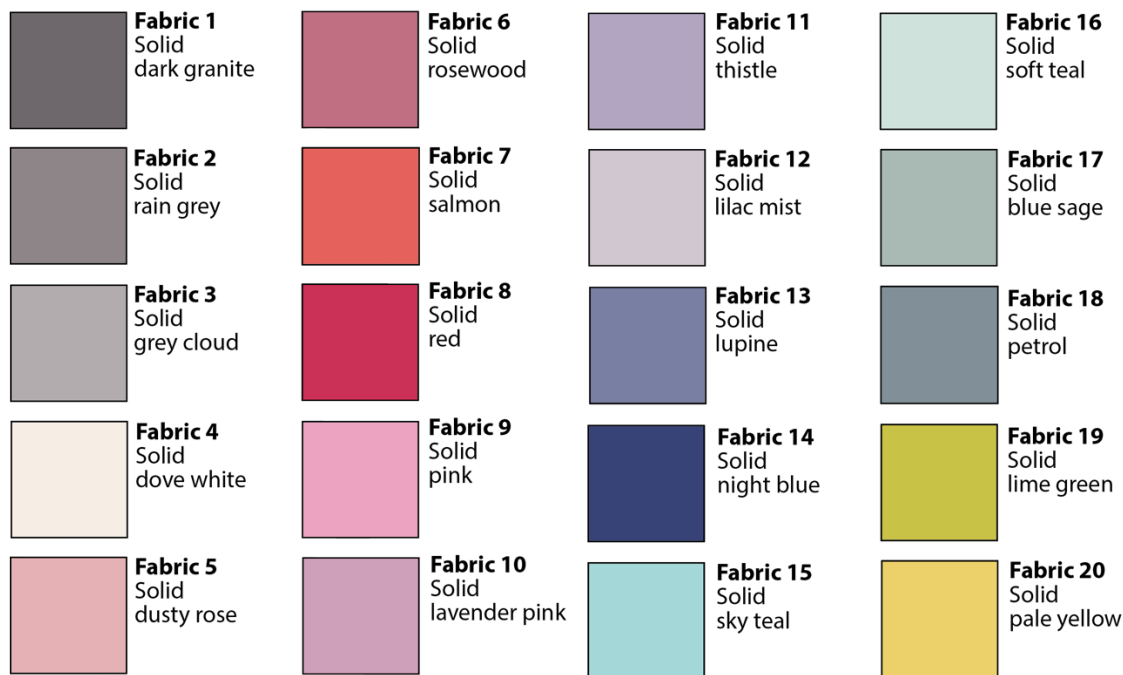
- Fabric quantities are based on a usable width of 42in (107cm), unless otherwise stated.
- Measurements are in imperial inches with metric conversions in brackets – use only *one* system throughout (preferably inches).
- Width measurements are generally given first.
- Press all fabrics before cutting.
- Use  $\frac{1}{4}$ in (6mm) seams unless otherwise instructed.

- Read all the instructions through before you start.

### Pillow Layout

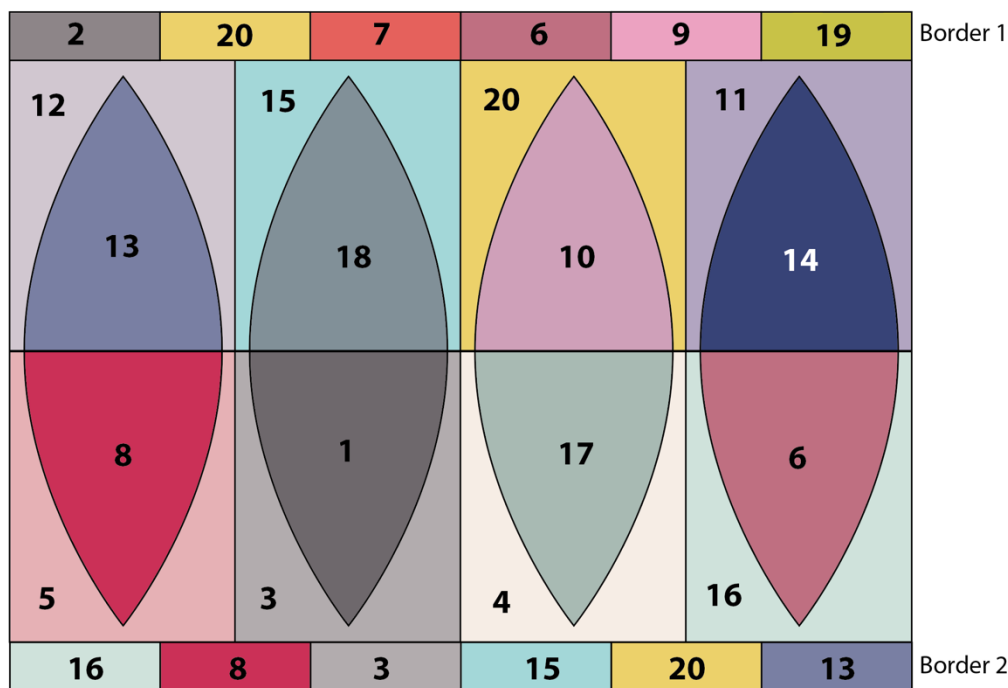
1 Follow the instructions for Pillow 1 but use **Fig A** here for the fabrics to use and **Fig B** below for the pillow layout and positions of the fabrics.

**Fig A** Fabric swatches (Colourplay Leaf Pillow 2)



**Fig B** Pillow layout and fabric positions

Numbers indicate fabrics used – see Fig A



## Cutting Out

**2** The fabrics for the blocks need to be cut out with Pattern A and Pattern B and these are provided full size, with seam allowances included.

**Pattern A shape:** This is symmetrical so it can be placed on the right side or wrong side of the fabric when marking. Solid fabrics often look the same on both sides, but we will still say “right side” or “wrong side” in case you are using other Tilda fabrics.

**Pattern B shapes:** These are not symmetrical and occur as two shapes – Pattern B and Pattern B Reversed (a flipped/reflected version of Pattern B). It is quicker to cut out these shapes with their straight edges together.

**3** For the Pattern A and Pattern B, follow the instructions for Pillow 1 but change fabrics to those for Pillow 2, as follows.

- Cut one Pattern A from Fabrics 1, 6, 8, 10, 13, 14, 17 and 18.
- Cut one Pattern B and B Reversed from Fabrics 3, 4, 5, 11, 12, 15, 16 and 20.

**4** To mark and cut the fabrics for the blocks, copy the patterns onto thick paper or thin card. When marking the shapes on the fabrics, use a pencil for marking pale fabrics and a light marker, such as chalk, for marking dark fabrics. For the most economical use of the fabric, draw the patterns rotated horizontally, fitting them together with minimal wastage. **Note:** this orientation is fine for solid fabrics but if making the quilt with print fabrics that have a pattern direction, then you might prefer to rotate the paper patterns to a vertical layout.

Position the paper pattern on the fabric and mark around the shape, ensuring it does not move as you draw around it. Use sharp scissors to cut out the shape. When you have marked and cut out a shape, always place the paper pattern back on top of the shape to check that the fabric shape is *exactly* the same as the paper. Refer to **Fig B** above for the positions of the fabrics in the blocks.

**5** There are two borders, 1 and 2, both made up of rectangles (see **Fig B**). The pieces are each cut 5¼in x 2in (13.4cm x 5.1cm). If you cut sparingly, you should have enough fabric left over for the border on the pieced backing (if choosing this option).

- For Border 1, cut one piece 5¼in x 2in (13.4cm x 5.1cm) from Fabrics 2, 20, 7, 6, 9 and 19.
- For Border 2, cut one piece 5¼in x 2in (13.4cm x 5.1cm) from Fabrics 16, 8, 3, 15, 20 and 13.

**6 If using a single fabric for the back:** Cut the fabric for the back of the pillow into two pieces, each 28½in x 14in (72.4cm x 35.5cm).

**7 If making a pieced backing:** You will need the following fabrics – the three larger pieces need to be bought in *addition* to the quilt front fabrics.

- One piece of Solid dusty rose 28½in x 9in (72.4cm x 23cm).
- One piece of Solid dusty rose 28½in x 3¾in (72.4cm x 9.5cm).
- One piece of Solid lime green 28½in x 14½in (72.4cm x 36.8cm).

Border 2 is repeated on the pieced backing, and you should be able to cut the rectangles from fabric offcuts from the front of the pillow. Once cut, set them aside for the moment.

- Cut one piece 5¼in x 2in (13.4cm x 5.1cm) from Fabrics 16, 8, 3, 15, 20 and 13.

**8** Cut the binding fabric into three strips 2½in (6.4cm) x width of fabric. Sew them together end to end and press seams open. Press in half along the length, wrong sides together.

### Making a Block

**9** To make a block, follow the instructions given for Pillow 1 (Steps 9–13), using **Fig B** here for the colours.

### Assembling the Patchwork

**10** Follow the instructions given for Pillow 1 (Steps 14 and 15) to sew the blocks together and add the borders.

### Quilting and Finishing

**11** Make a quilt sandwich of the patchwork, wadding (batting) and lining fabric (if using). Quilt as desired. Trim off excess wadding and lining fabric to match the patchwork size.

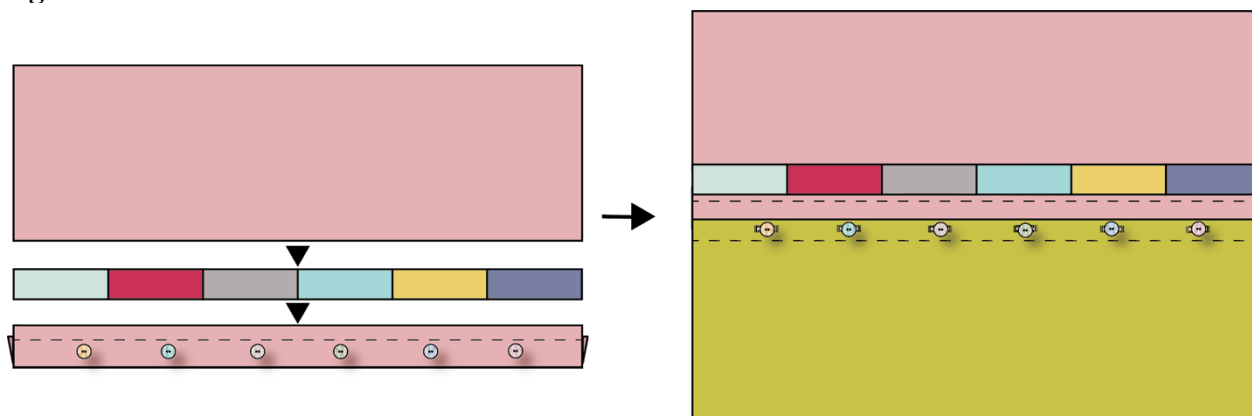
### Making Up the Cover if Using a Single Fabric

**12** Follow the instructions given for Pillow 1 (Steps 17–19).

### Making Up the Cover if Creating a Pieced Back

**13** Follow the instructions given for Pillow 1 (Steps 20–23), but use the fabrics shown in **Fig C** here and making another Border 2 for the pillow back.

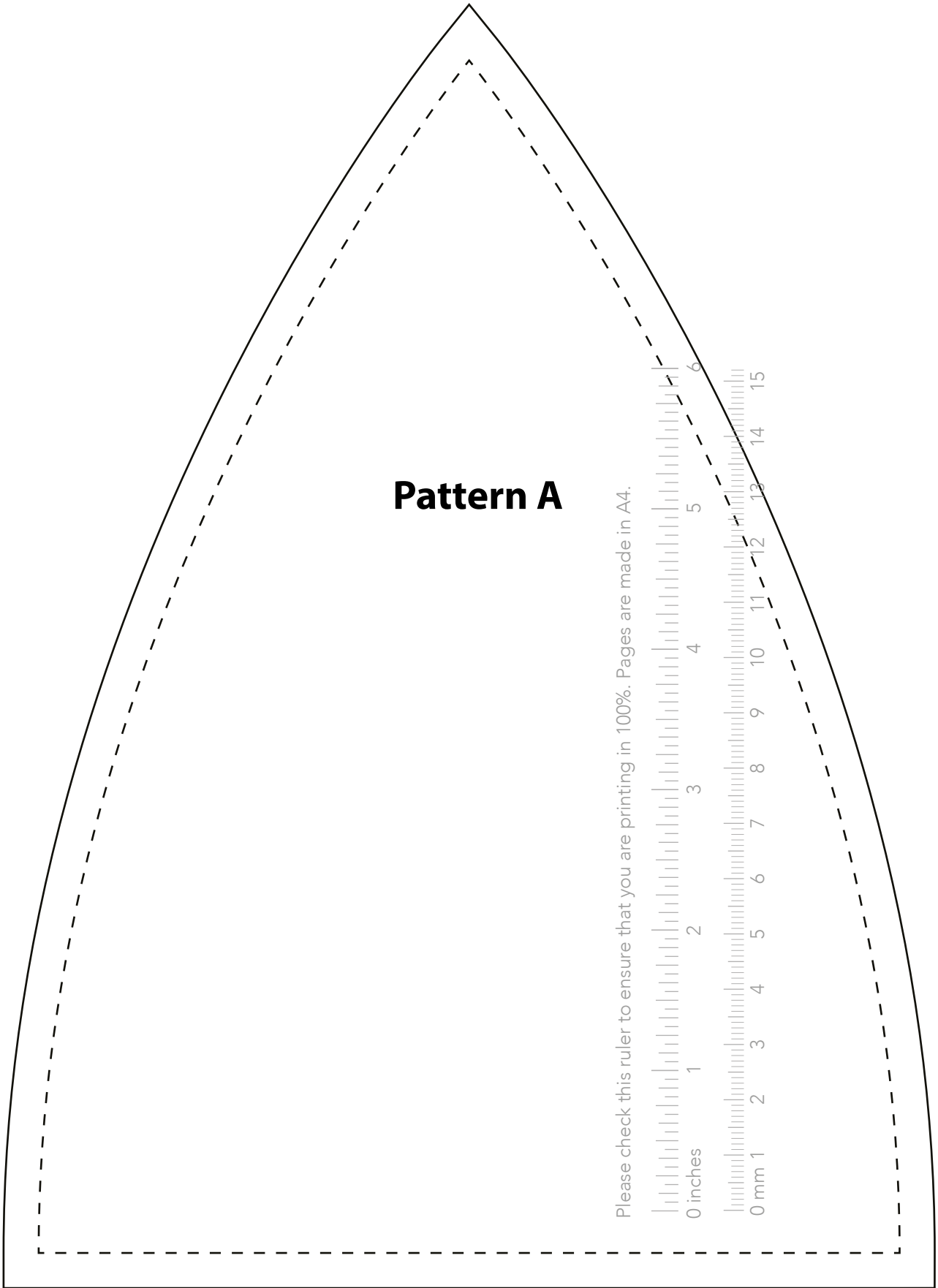
**Fig C** Pieced back for Pillow 2



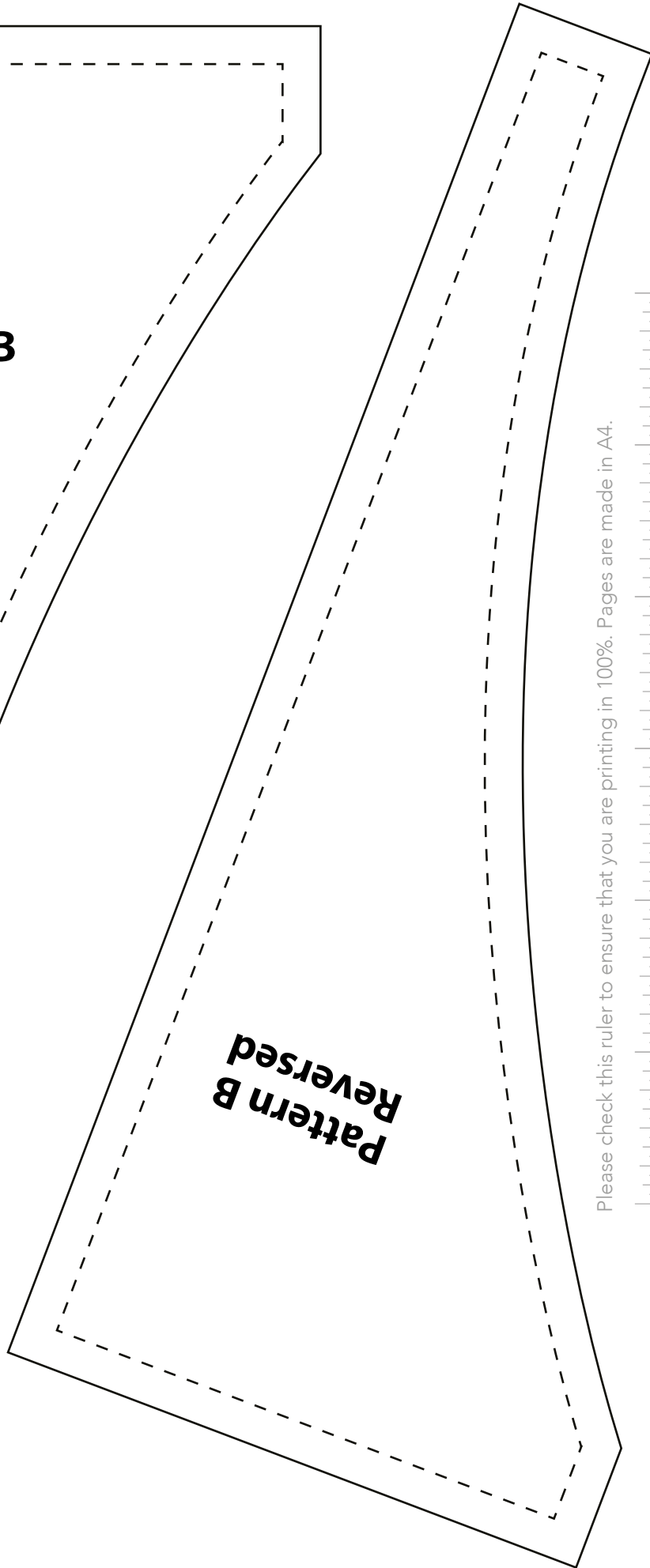
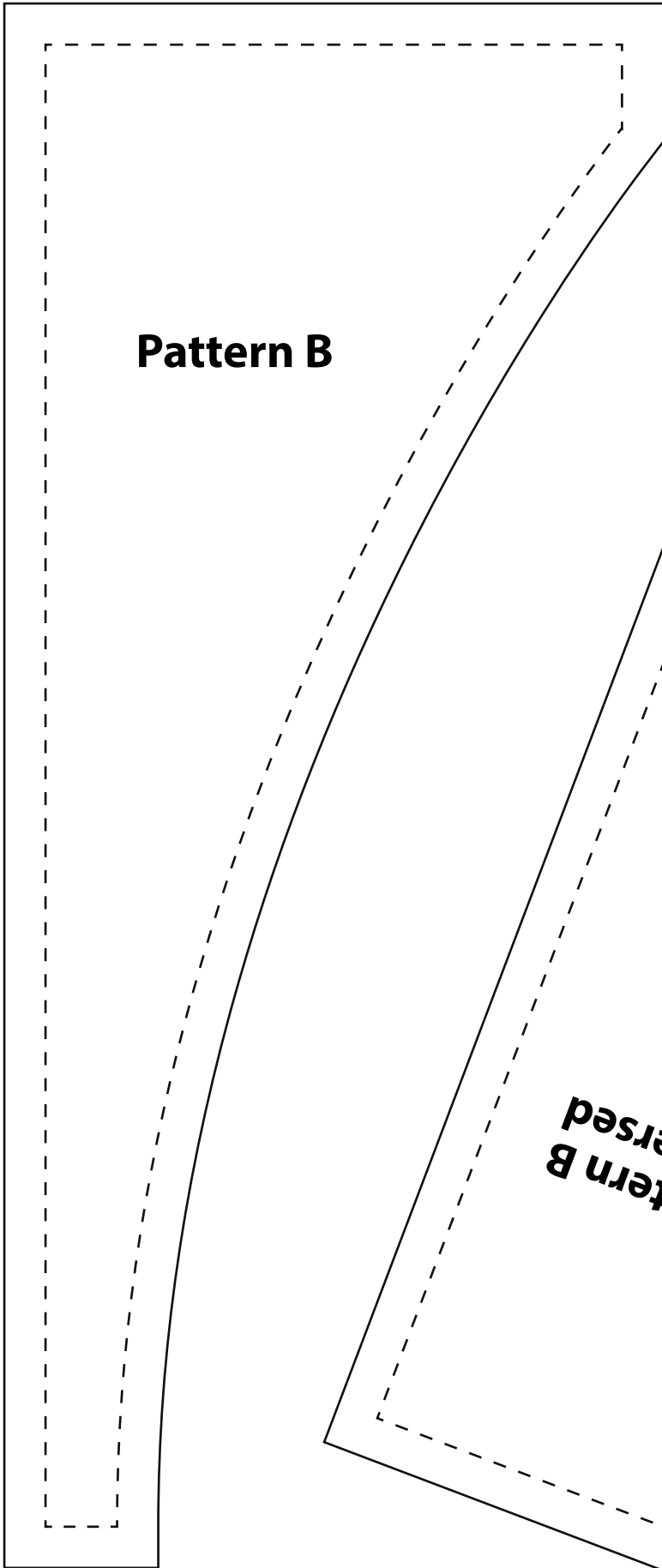
# Colourplay Leaf Patterns

## Pattern A

Please check this ruler to ensure that you are printing in 100%. Pages are made in A4.



# Colourplay Leaf Patterns



Please check this ruler to ensure that you are printing in 100%. Pages are made in A4.

