



Tilda®

# BLOOMSVILLE

Blooming Lantern  
Pillows





# Blooming Lanterns Pillow

(Cornflower blue colourway)

This pretty pillow with its cheerful cornflower blue background would look wonderful on its own or to accompany either of the Blooming Lanterns Quilts. The middle sections of the lanterns look best if the fabrics are fussy cut, to display the fabric motifs. There are also two other pillows in this design, one with a rich rust coloured background and one in a delicate thistle shade – see [tildasworld.com](http://tildasworld.com) for the instructions for the alternate pillow colours and the instructions for the two quilts.

Difficulty rating \*\*

## Materials

- Fabric 1:  $\frac{3}{8}$ yd (40cm) – Solid cornflower blue (120024)
- Fabric 2: one piece  $9\frac{1}{2}$ in x  $2\frac{1}{2}$ in (24.1cm x 6.4cm) – Abloom iris (110077)
- Fabric 3: one piece  $9\frac{1}{2}$ in x  $5\frac{1}{2}$ in (24.1cm x 14cm) **or** if fussy cutting, allow about 18in x 9in (46cm x 23cm) – Flowertangle persimmon (100505)
- Fabric 4: one piece  $9\frac{1}{2}$ in x  $2\frac{1}{2}$ in (24.1cm x 6.4cm) – Late Bloomer tomato (100501)
- Fabric 5: two pieces  $5\frac{1}{2}$ in x  $1\frac{1}{2}$ in (14cm x 3.8cm) – Solid salmon (120027)
- Fabric 6: one piece  $9\frac{1}{2}$ in x  $2\frac{1}{2}$ in (24.1cm x 6.4cm) – Abloom pink (110080)
- Fabric 7: one piece  $9\frac{1}{2}$ in x  $5\frac{1}{2}$ in (24.1cm x 14cm) **or** if fussy cutting, allow about 18in x 9in (46cm x 23cm) – Garden Vista dove (100507)
- Fabric 8: one piece  $9\frac{1}{2}$ in x  $2\frac{1}{2}$ in (24.1cm x 6.4cm) – Abloom plum (110078)
- Fabric 9: two pieces  $5\frac{1}{2}$ in x  $1\frac{1}{2}$ in (14cm x 3.8cm) – Solid cerise (120015)
- Fabric 10: one piece  $9\frac{1}{2}$ in x  $2\frac{1}{2}$ in (24.1cm x 6.4cm) – Abloom turquoise (110072)
- Fabric 11: one piece  $9\frac{1}{2}$ in x  $5\frac{1}{2}$ in (24.1cm x 14cm) **or** if fussy cutting, allow about 18in x 9in (46cm x 23cm) – Flowertangle mustard (100516)
- Fabric 12: one piece  $9\frac{1}{2}$ in x  $2\frac{1}{2}$ in (24.1cm x 6.4cm) – Late Bloomer corn (100520)
- Fabric 13: two pieces  $5\frac{1}{2}$ in x  $1\frac{1}{2}$ in (14cm x 3.8cm) – Solid dijon (120039)
- Wadding (batting): 33in x 16in (84cm x 40.5cm)
- Lining fabric (optional): 33in x 16in (84cm x 40.5cm)
- Fabric for back of cover: two pieces each 32in x  $10\frac{1}{2}$ in (81.3cm x 26.7cm) – Abloom tomato (110079)
- Binding fabric:  $\frac{1}{4}$ yd (25cm) – Abloom tomato (110082)
- Quilter's ruler, rotary cutter and mat
- Five buttons for fastening (optional) – Abloom buttons blue/red 18mm diameter (400056)
- Pillow pad to fit cover

## Fabric Notes

Pieces needed from Solid fabrics can be cut horizontally or vertically. The print fabrics for the middle of each lantern look best if fussy cut, to centre attractive motifs within the shape. Extra fabric is suggested in the Materials list if you wish to do this.

## Finished Size

$31\frac{1}{2}$ in x  $14\frac{1}{2}$ in (80cm x 36.8cm)

## General Notes

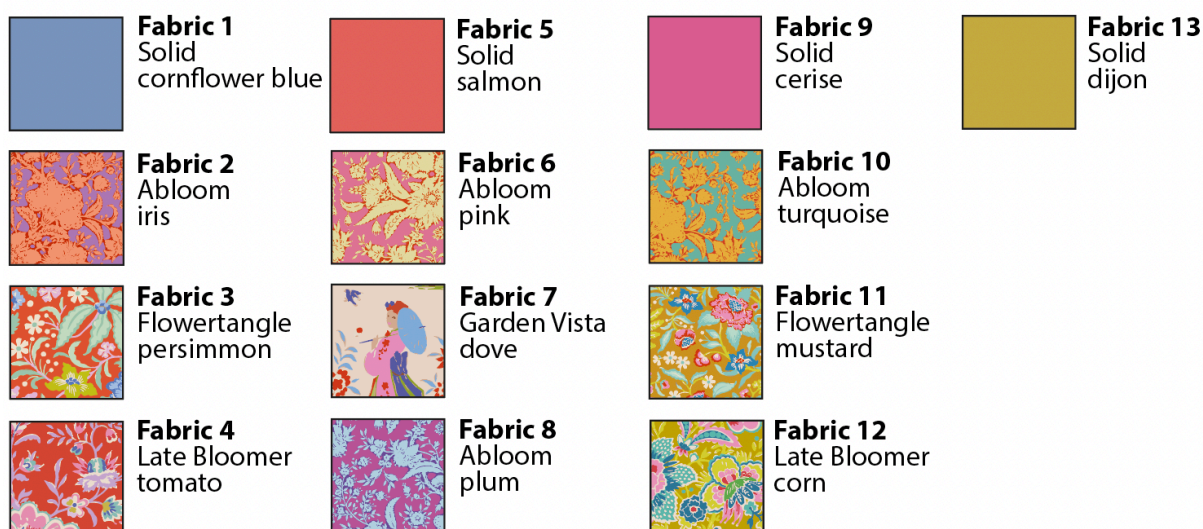


- Fabric quantities are based on a usable width of 42in (107cm), unless otherwise stated.
- Measurements are in imperial inches with metric conversions in brackets – use only *one* system throughout (preferably inches). Width measurements are generally given first.
- Before using your fabrics, press and trim as needed to square up the fabric pattern/weave, using a quilting ruler to cut the top raw edge at 90 degrees to the selvages.
- Use ¼in (6mm) seams unless otherwise instructed.
- Read all the instructions through before you start.
- Always make one complete block as a test before going on to make the remaining blocks.

## Pillow Layout

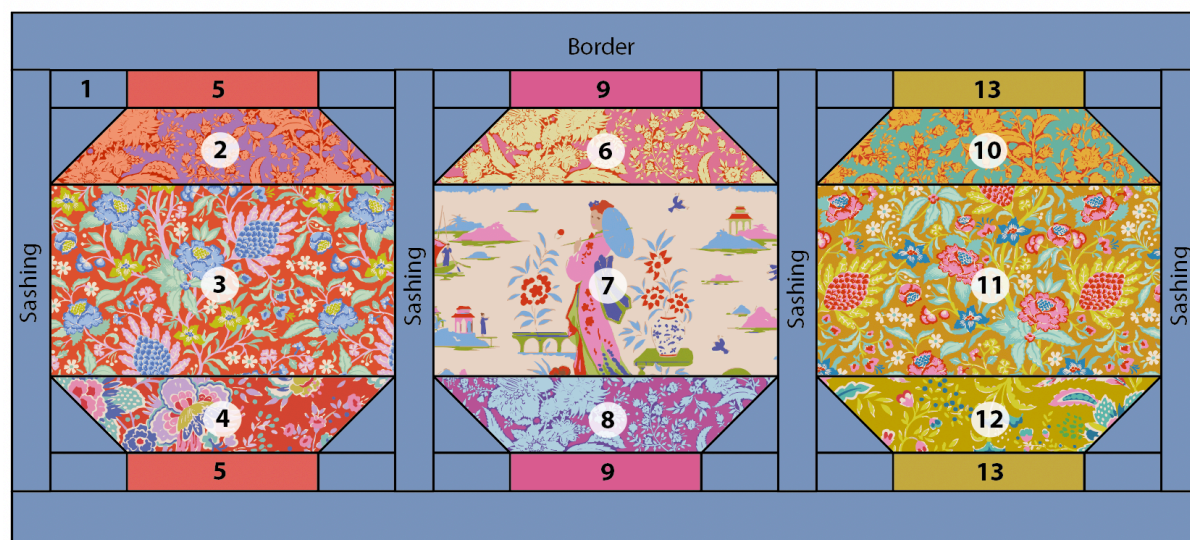
**1** The pillow is made up of three lantern blocks. The blocks are separated by narrow sashing, with slightly wider border strips along the top and bottom of the pillow. See **Fig A** for the fabrics used and **Fig B** for the pillow layout and fabric positions.

**Fig A** Fabric swatches (cornflower blue pillow)



**Fig B** Pillow layout and fabric positions

Numbers indicate fabrics used (see Fig A)



## Cutting Out

**2** Fabric 1 is used for the sashing and borders and it's best to cut these strips first, saving all offcuts for the blocks. Cut the following strips.

- Sashing – four strips each  $1\frac{1}{2}\text{in} \times 11\frac{1}{2}\text{in}$  (3.8cm x 29.2cm).
- Border – two strips each  $31\frac{1}{2}\text{in} \times 2\text{in}$  (80cm x 5.1cm).

For the blocks cut the following pieces from Fabric 1.

- Twelve of piece **a** –  $2\frac{1}{2}\text{in} \times 1\frac{1}{2}\text{in}$  (6.4cm x 3.8cm).
- Twelve of piece **d** –  $2\frac{1}{2}\text{in}$  (6.4cm) square.

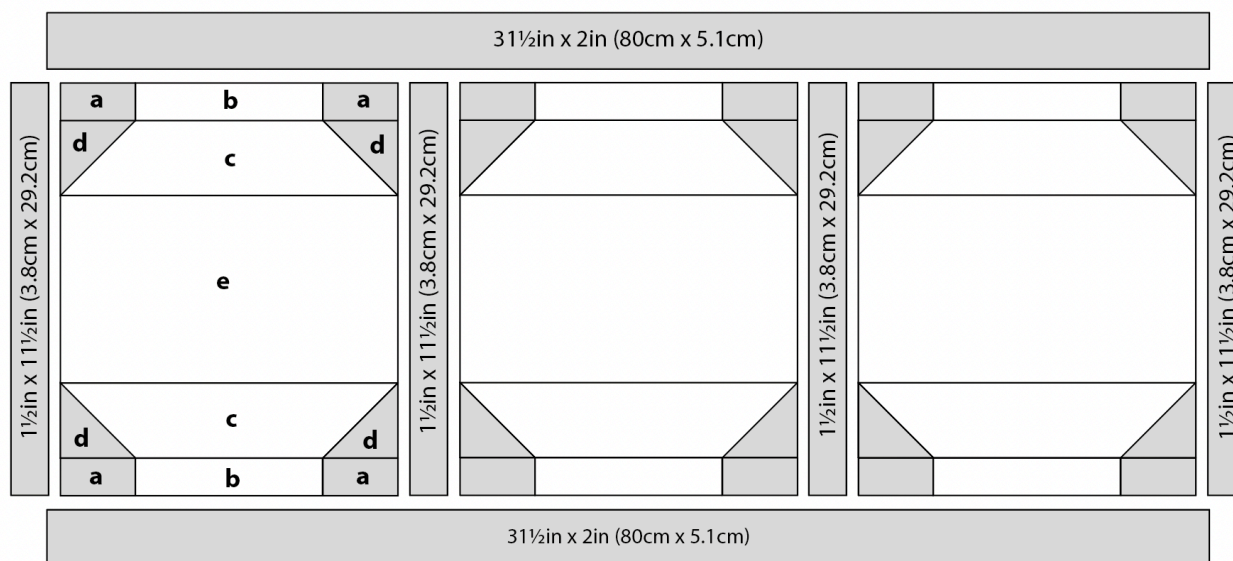
**3** When cutting the rest of the fabrics for the blocks, refer to **Fig C** for the cut measurements – the blocks are all identical. Refer to **Fig B** for the fabric positions. The Materials list gives the specific sizes to cut if you wish to use this as a checklist. The print fabrics for the middle of each lantern look best if fussy cut, to centre attractive motifs within the shape. Extra fabric is suggested in the Materials list if you wish to do this.

**4** Cut the binding fabric into three strips  $2\frac{1}{2}\text{in}$  (6.4cm) x width of fabric. Sew them together end to end and press seams open. Press in half along the length, wrong sides together.

### Fig C Pillow cut measurements

Sizes include seam allowances

All pieces to be cut initially as squares or rectangles



- a  $2\frac{1}{2}\text{in} \times 1\frac{1}{2}\text{in}$  (6.4cm x 3.8cm)
- b  $5\frac{1}{2}\text{in} \times 1\frac{1}{2}\text{in}$  (14cm x 3.8cm)
- c  $9\frac{1}{2}\text{in} \times 2\frac{1}{2}\text{in}$  (24.1cm x 6.4cm)
- d  $2\frac{1}{2}\text{in}$  (6.4cm) square
- e  $9\frac{1}{2}\text{in} \times 5\frac{1}{2}\text{in}$  (24.1cm x 14cm) – fussy cut if desired for Fabrics 3, 7 and 11

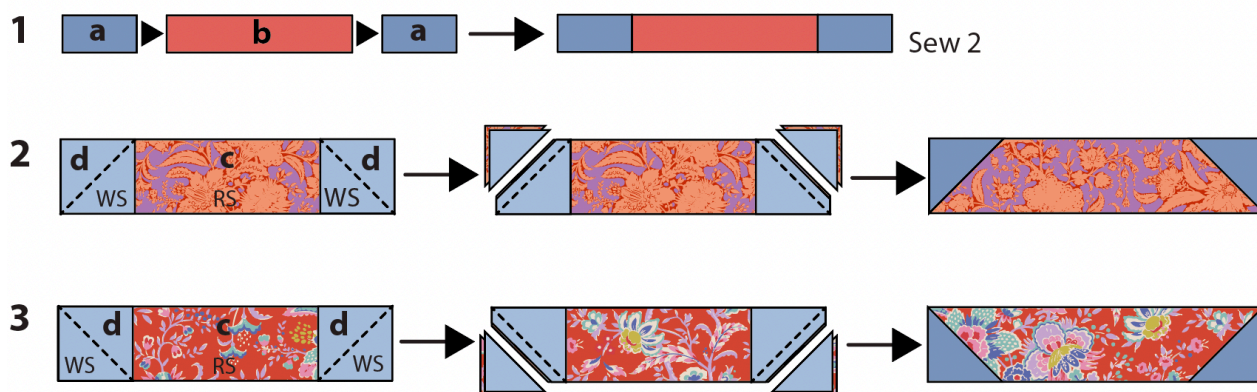
## Making a Lantern Block

**5** All of the blocks have the same basic construction, using simple techniques. The left-hand block will be described and illustrated. Lay out the correct pieces for the block and follow **Fig D** to make the top and bottom units of the block. Using  $\frac{1}{4}\text{in}$  (6mm) seams, sew together pieces **a, b, a** (**Fig D 1**). Press the seams inwards. Repeat this to sew a second unit.



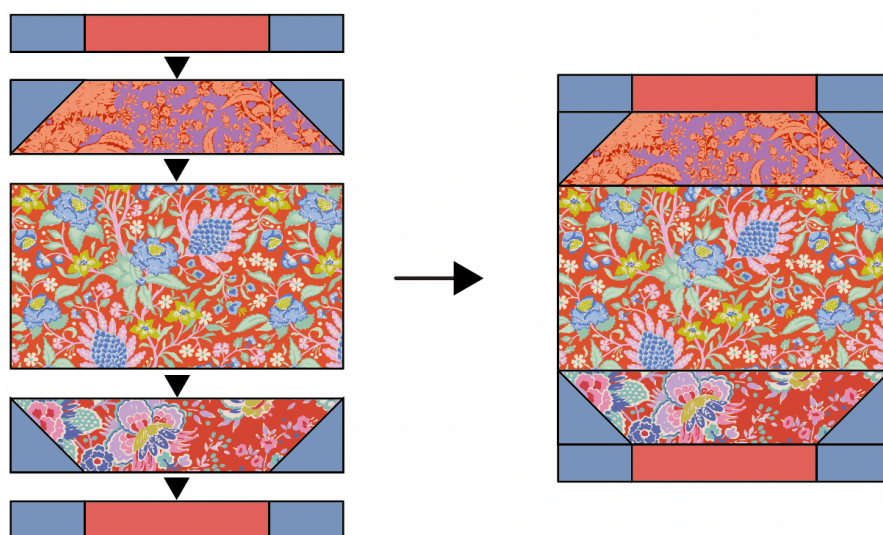
**6** Now make the corner triangle units as in **Fig D 2**. Take a rectangle **c** and place it right side up. Take two **d** squares and pencil mark a diagonal line on the wrong side of each. Place the squares right sides together with the rectangle, aligning the edges and with the marked lines in the directions shown in the diagram. Sew along the marked lines. Trim off excess fabric  $\frac{1}{4}$ in (6mm) past the sewn lines and then press the triangles outwards. Use the same process to make the other **c/d** unit, but changing the **c** fabric and angling the marked and sewn line in the directions shown in **Fig D 3**.

**Fig D** Making a lantern block



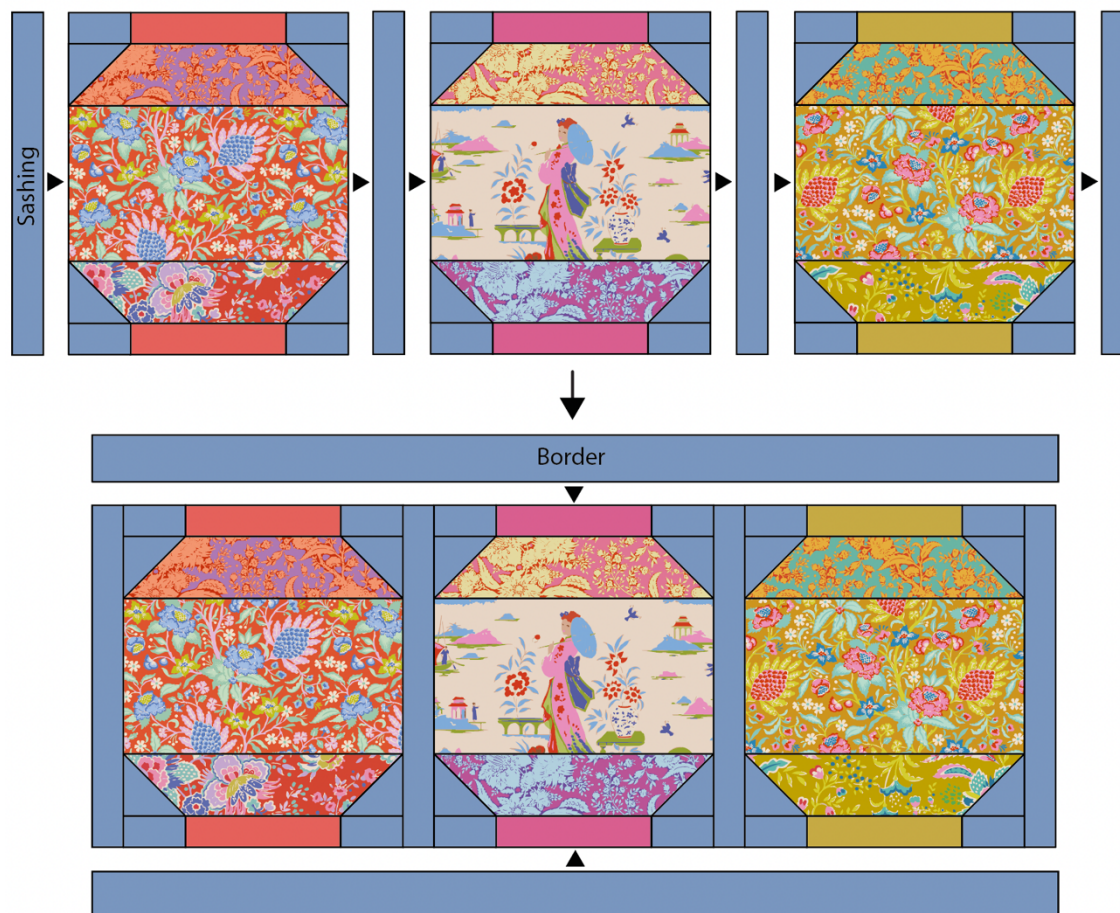
**7** Take the sewn units and the lantern centre piece and sew together as in **Fig E**, pressing seams after each stage. Check the block is  $9\frac{1}{2}$ in x  $11\frac{1}{2}$ in (24.1cm x 29.2cm) (unfinished). Repeat the block-making process to make the other two blocks, changing fabrics as shown in **Fig B**.

**Fig E** Assembling a block



### Assembling the Pillow

**8** Follow **Fig F** to assemble the patchwork, sewing the sashing strips to the sides of the blocks first. Use  $\frac{1}{4}$ in (6mm) seams and press the seams towards the sashing (or open if you prefer). Finally, sew the border strips into place at the top and bottom of the patchwork. Press the seams towards the borders or open.

**Fig F** Assembling the pillow

## Quilting and Finishing

**9** Make a quilt sandwich of the patchwork, wadding (batting) and lining fabric (if using). Quilt as desired. Trim off excess wadding and lining fabric to match the patchwork size.

**10** To make up the pillow cover, take the two pieces of fabric for the pillow back and on one long edge of each piece, create a hem by turning the edge over by 1 in (2.5cm), twice. Sew the seams with matching thread and press (**Fig G**). The diagram is shown in greys, so you can use the Tilda fabric and buttons suggested in the Materials list, or those of your choice.

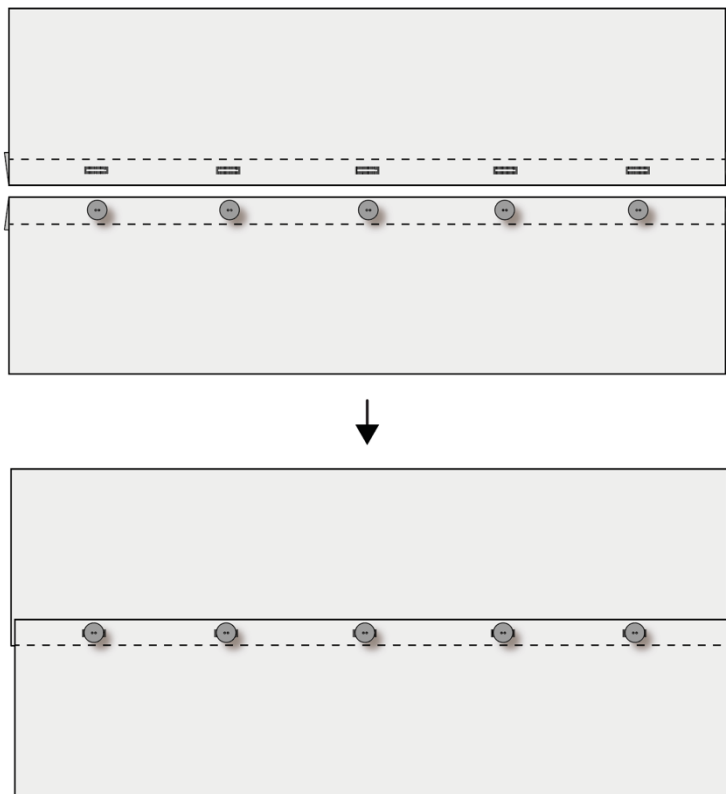
**11** For the fastening, using your sewing machine, create five equally spaced buttonholes within the hem of one of the pieces. Sew five buttons onto the other piece, matching their positions to the buttonholes. Note: Instead of making buttonholes, you could use a hook and loop fastening, such as Velcro to fasten the cover and sew on the buttons as a decorative feature.

**12** The pillow has a bound edge, so the pieces are assembled with right sides out, as follows. Place the quilted patchwork right side down. On the backing, fasten the buttons into the buttonholes and then place the whole piece on top of the patchwork, right side up. Check it is the same size as the patchwork, trimming any raw edges if needed. Make sure the outer edges of all pieces are aligned. Pin or tack (baste) the layers together and then bind as normal. As



you sew the binding in place it will fix the other layers together. Press the cover and insert a pillow pad to finish.

**Fig G** Making up with a button fastening



# Blooming Lanterns Pillow

(Rust colourway)

This large, comfy pillow would make a wonderful companion to either of the Blooming Lanterns Quilts. It is made using the Bloomville and Abloom collections, plus a few Solids and features three Chinese lanterns blocks. The middle sections of the lanterns look best if the fabrics are fussy cut, to show off the fabric motifs. There are also two other pillows in this design, one with a delicate thistle coloured background and one with a lovely cornflower blue – see [tildasworld.com](http://tildasworld.com) for the instructions for the alternate pillow colours and the instructions for the two quilts.

Difficulty rating \*\*

## Materials

- Fabric 1:  $\frac{3}{8}$ yd (40cm) – Solid rust (120017)
- Fabric 2: one piece  $9\frac{1}{2}$ in x  $2\frac{1}{2}$ in (24.1cm x 6.4cm) – Abloom iris (110077)
- Fabric 3: one piece  $9\frac{1}{2}$ in x  $5\frac{1}{2}$ in (24.1cm x 14cm) **or** if fussy cutting, allow about 18in x 9in (46cm x 23cm) – Late Bloomer tomato (100501)
- Fabric 4: one piece  $9\frac{1}{2}$ in x  $5\frac{1}{2}$ in (24.1cm x 14cm) and one piece  $9\frac{1}{2}$ in x  $2\frac{1}{2}$ in (24.1cm x 6.4cm) **or** if fussy cutting, allow about 18in x 9in (46cm x 23cm) – Flowermarket plum (100502)
- Fabric 5: two pieces  $5\frac{1}{2}$ in x  $1\frac{1}{2}$ in (14cm x 3.8cm) – Solid ginger (120018)
- Fabric 6: one piece  $9\frac{1}{2}$ in x  $2\frac{1}{2}$ in (24.1cm x 6.4cm) – Abloom sky (110074)
- Fabric 7: one piece  $9\frac{1}{2}$ in x  $5\frac{1}{2}$ in (24.1cm x 14cm) **or** if fussy cutting, allow about 18in x 9in (46cm x 23cm) – Garden Vista light corn (100518)
- Fabric 8: one piece  $9\frac{1}{2}$ in x  $2\frac{1}{2}$ in (24.1cm x 6.4cm) – Abloom turquoise (110072)
- Fabric 9: two pieces  $5\frac{1}{2}$ in x  $1\frac{1}{2}$ in (14cm x 3.8cm) – Solid dusty teal (120043)
- Fabric 10: one piece  $9\frac{1}{2}$ in x  $2\frac{1}{2}$ in (24.1cm x 6.4cm) – Abloom tomato (110079)
- Fabric 11: one piece  $9\frac{1}{2}$ in x  $2\frac{1}{2}$ in (24.1cm x 6.4cm) – Cottonbloom paprika (100503)
- Fabric 12: two pieces  $5\frac{1}{2}$ in x  $1\frac{1}{2}$ in (14cm x 3.8cm) – Solid cerise (120015)
- Wadding (batting): 33in x 16in (84cm x 40.5cm)
- Lining fabric (optional): 33in x 16in (84cm x 40.5cm)
- Fabric for back of cover: two pieces each 32in x  $10\frac{1}{2}$ in (81.3cm x 26.7cm) – Abloom pink (110080)
- Binding fabric:  $\frac{1}{4}$ yd (25cm) – Abloom pink (110080)
- Quilter's ruler, rotary cutter and mat
- Five buttons for fastening (optional) – Abloom buttons blue/red 18mm diameter (400056)
- Pillow pad to fit cover

## Fabric Notes

Pieces needed from Solid fabrics can be cut horizontally or vertically. The print fabrics for the middle of each lantern look best if fussy cut, to centre attractive motifs within the shape. Extra fabric is suggested in the Materials list if you wish to do this. Note that Fabric 4 is used twice in this version of the pillow.

## Finished Size

$31\frac{1}{2}$ in x  $14\frac{1}{2}$ in (80cm x 36.8cm)



## General Notes

- Fabric quantities are based on a usable width of 42in (107cm), unless otherwise stated.
- Measurements are in imperial inches with metric conversions in brackets – use only *one* system throughout (preferably inches). Width measurements are generally given first.
- Before using your fabrics, press and trim as needed to square up the fabric pattern/weave, using a quilting ruler to cut the top raw edge at 90 degrees to the selvages.
- Use ¼in (6mm) seams unless otherwise instructed.
- Read all the instructions through before you start.
- Always make one complete block as a test before going on to make the remaining blocks.

## Pillow Layout

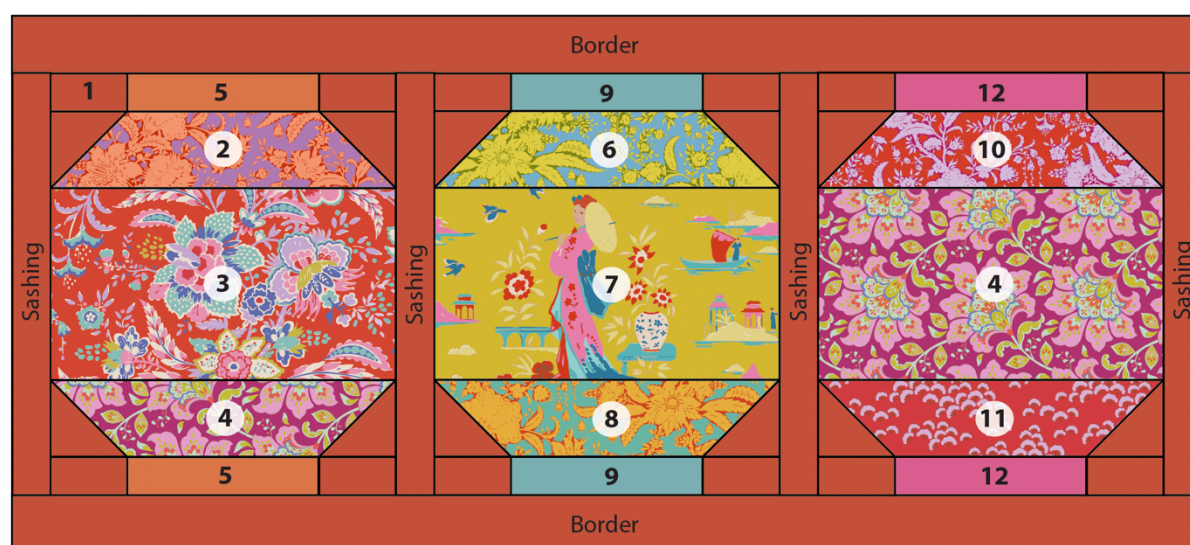
**1** The pillow is made up of three lantern blocks. The blocks are separated by narrow sashing, with slightly wider border strips along the top and bottom of the pillow. See **Fig A** for the fabrics used and **Fig B** for the pillow layout and fabric positions.

**Fig A** Fabric swatches (rust pillow)



**Fig B** Pillow layout and fabric positions

Numbers indicate fabrics used (see Fig A)



## Cutting Out

**2** Fabric 1 is used for the sashing and borders and it's best to cut these strips first, saving all offcuts for the blocks. Cut the following strips.

- Sashing – four strips each  $1\frac{1}{2}$ in x  $11\frac{1}{2}$ in (3.8cm x 29.2cm).
- Border – two strips each  $31\frac{1}{2}$ in x 2in (80cm x 5.1cm).

For the blocks cut the following pieces from Fabric 1.

- Twelve of piece **a** –  $2\frac{1}{2}$ in x  $1\frac{1}{2}$ in (6.4cm x 3.8cm).
- Twelve of piece **d** –  $2\frac{1}{2}$ in (6.4cm) square.

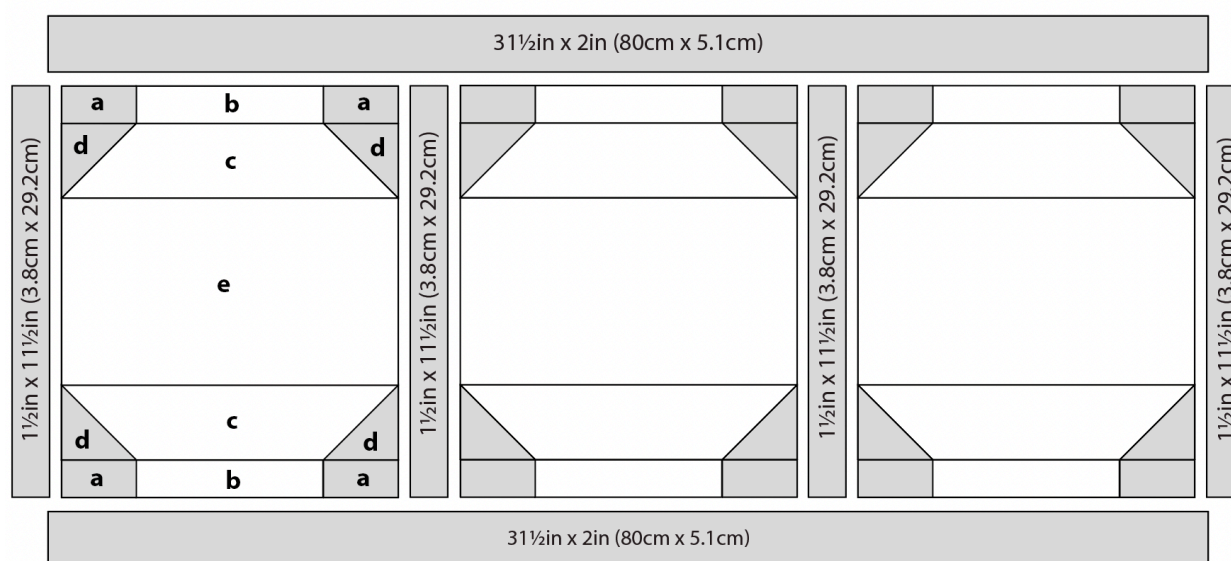
**3** When cutting the rest of the fabrics for the blocks, refer to **Fig C** for the cut measurements – the blocks are all identical. Refer to **Fig B** for the fabric positions. The Materials list gives the specific sizes to cut if you wish to use this as a checklist. The print fabrics for the middle of each lantern look best if fussy cut, to centre attractive motifs within the shape. Extra fabric is suggested in the Materials list if you wish to do this.

**4** Cut the binding fabric into three strips  $2\frac{1}{2}$ in (6.4cm) x width of fabric. Sew them together end to end and press seams open. Press in half along the length, wrong sides together.

### Fig C Pillow cut measurements

Sizes include seam allowances

All pieces to be cut initially as squares or rectangles



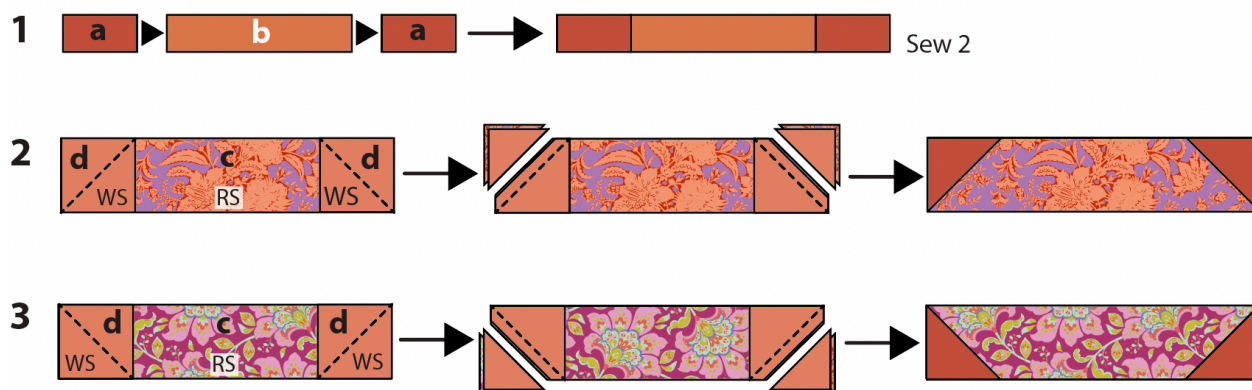
## Making a Lantern Block

**5** All of the blocks have the same basic construction, using simple techniques. The left-hand block will be described and illustrated. Lay out the correct pieces for the block and follow **Fig D** to make the top and bottom units of the block. Using  $\frac{1}{4}$ in (6mm) seams, sew together pieces **a**, **b**, **a** (**Fig D 1**). Press the seams inwards. Repeat this to sew a second unit.



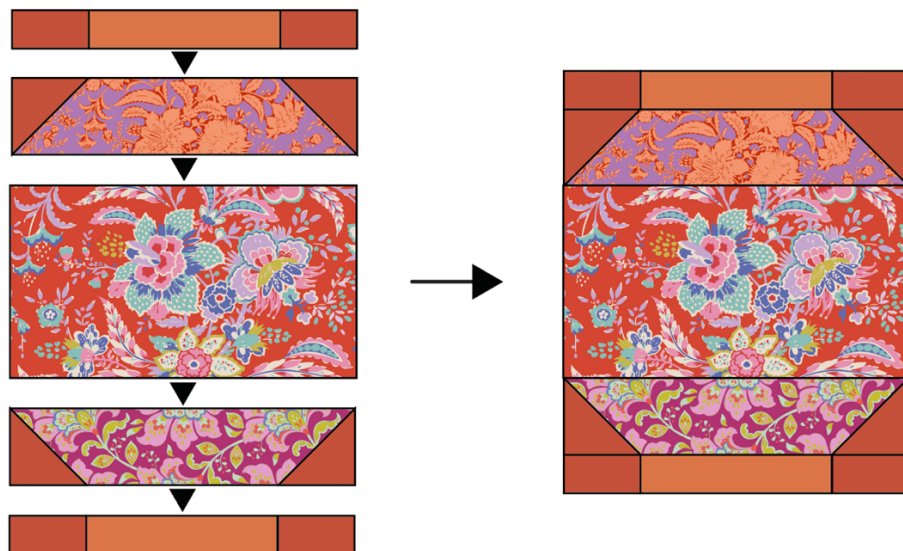
**6** Now make the corner triangle units as in **Fig D 2**. Take a rectangle **c** and place it right side up. Take two **d** squares and pencil mark a diagonal line on the wrong side of each. Place the squares right sides together with the rectangle, aligning the edges and with the marked lines in the directions shown in the diagram. Sew along the marked lines. Trim off excess fabric  $\frac{1}{4}$ in (6mm) past the sewn lines and then press the triangles outwards. Use the same process to make the other **c/d** unit, but changing the **c** fabric and angling the marked and sewn line in the directions shown in **Fig D 3**.

**Fig D** Making a lantern block



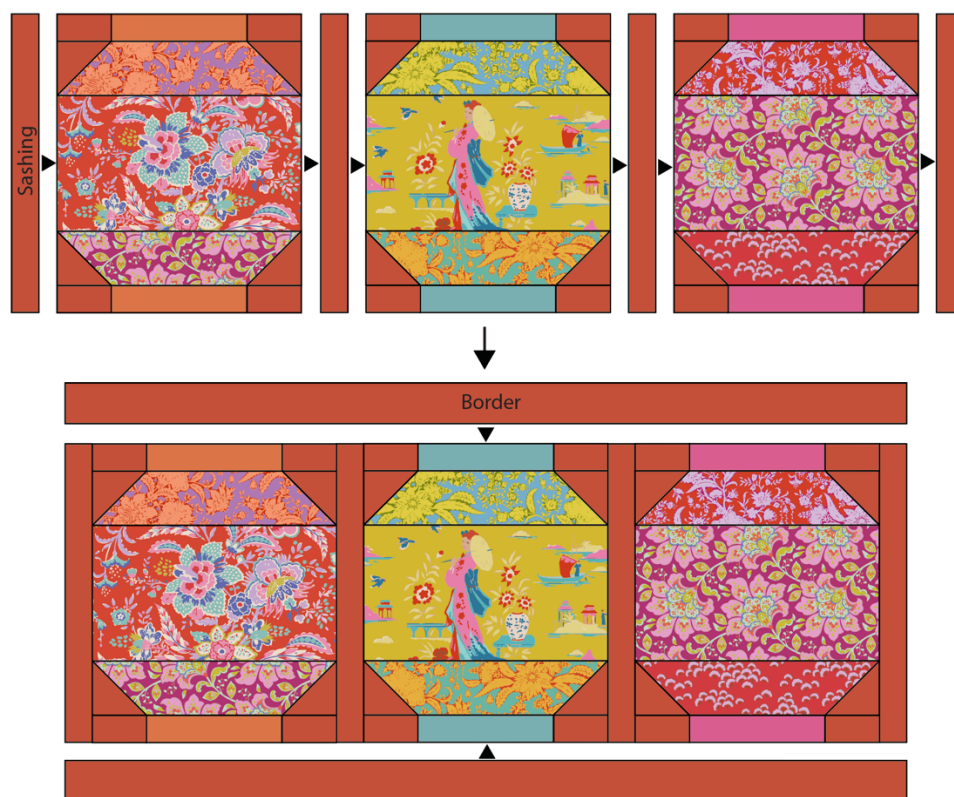
**7** Take the sewn units and the lantern centre piece and sew together as in **Fig E**, pressing seams after each stage. Check the block is  $9\frac{1}{2}$ in x  $11\frac{1}{2}$ in (24.1cm x 29.2cm) (unfinished). Repeat the block-making process to make the other two blocks, changing fabrics as shown in **Fig B**.

**Fig E** Assembling a block



### Assembling the Pillow

**8** Follow **Fig F** to assemble the patchwork, sewing the sashing strips to the sides of the blocks first. Use  $\frac{1}{4}$ in (6mm) seams and press the seams towards the sashing (or open if you prefer). Finally, sew the border strips into place at the top and bottom of the patchwork. Press the seams towards the borders or open.

**Fig F** Assembling the pillow

## Quilting and Finishing

**9** Make a quilt sandwich of the patchwork, wadding (batting) and lining fabric (if using). Quilt as desired. Trim off excess wadding and lining fabric to match the patchwork size.

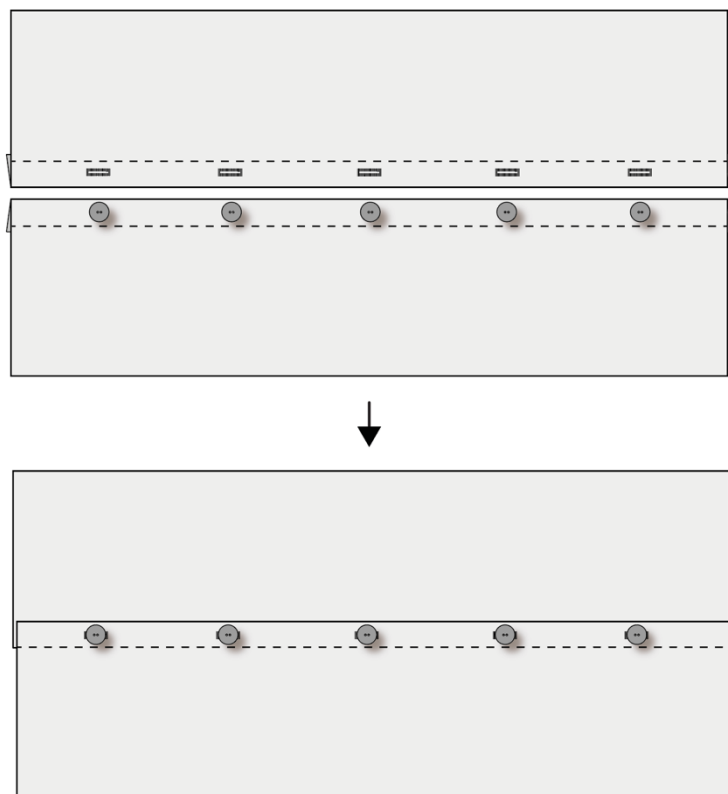
**10** To make up the pillow cover, take the two pieces of fabric for the pillow back and on one long edge of each piece, create a hem by turning the edge over by 1 in (2.5cm), twice. Sew the seams with matching thread and press (**Fig G**). The diagram is shown in greys, so you can use the Tilda fabric and buttons suggested in the Materials list, or those of your choice.

**11** For the fastening, using your sewing machine, create five equally spaced buttonholes within the hem of one of the pieces. Sew five buttons onto the other piece, matching their positions to the buttonholes. Note: Instead of making buttonholes, you could use a hook and loop fastening, such as Velcro, to fasten the cover and sew on the buttons as a decorative feature.

**12** The pillow has a bound edge, so the pieces are assembled with right sides out, as follows. Place the quilted patchwork right side down. On the backing, fasten the buttons into the buttonholes and then place the whole piece on top of the patchwork, right side up. Check it is the same size as the patchwork, trimming any raw edges if needed. Make sure the outer edges of all pieces are aligned. Pin or tack (baste) the layers together and then bind as normal. As you sew the binding in place it will fix the other layers together. Press the cover and insert a pillow pad to finish.



**Fig G** Making up with a button fastening



# Blooming Lanterns Pillow

(Thistle colourway)

This lovely pillow uses a solid background in thistle and this delicate pale lilac colour is perfect to show off the golds, aquas and plums of the lantern blocks. The pillow would be a good companion to either of the Blooming Lanterns Quilts. The middle sections of the lanterns look best if the fabrics are fussy cut, to display the fabric motifs. There are also two other pillows in this design, one with a rich rust coloured background and one with a pretty cornflower blue – see [tildasworld.com](http://tildasworld.com) for the instructions for the alternate pillow colours and the instructions for the two quilts.

Difficulty rating \*\*

## Materials

- Fabric 1:  $\frac{3}{8}$ yd (40cm) – Solid thistle (120012)
- Fabric 2: one piece  $9\frac{1}{2}$ in x  $2\frac{1}{2}$ in (24.1cm x 6.4cm) – Abloom pink (110080)
- Fabric 3: one piece  $9\frac{1}{2}$ in x  $5\frac{1}{2}$ in (24.1cm x 14cm) **or** if fussy cutting, allow about 18in x 9in (46cm x 23cm) – Late Bloomer corn (100520)
- Fabric 4: one piece  $9\frac{1}{2}$ in x  $2\frac{1}{2}$ in (24.1cm x 6.4cm) – Flowermarket sky (100517)
- Fabric 5: two pieces  $5\frac{1}{2}$ in x  $1\frac{1}{2}$ in (14cm x 3.8cm) – Solid mustard (120040)
- Fabric 6: one piece  $9\frac{1}{2}$ in x  $2\frac{1}{2}$ in (24.1cm x 6.4cm) – Abloom turquoise (110072)
- Fabric 7: one piece  $9\frac{1}{2}$ in x  $5\frac{1}{2}$ in (24.1cm x 14cm) **or** if fussy cutting, allow about 18in x 9in (46cm x 23cm) – Garden Vista turquoise (100515)
- Fabric 8: one piece  $9\frac{1}{2}$ in x  $2\frac{1}{2}$ in (24.1cm x 6.4cm) – Abloom petrol (110073)
- Fabric 9: two pieces  $5\frac{1}{2}$ in x  $1\frac{1}{2}$ in (14cm x 3.8cm) – Solid aqua (120042)
- Fabric 10: one piece  $9\frac{1}{2}$ in x  $2\frac{1}{2}$ in (24.1cm x 6.4cm) – Abloom plum (110078)
- Fabric 11: one piece  $9\frac{1}{2}$ in x  $5\frac{1}{2}$ in (24.1cm x 14cm) **or** if fussy cutting, allow about 18in x 9in (46cm x 23cm) – Flowermarket blueberry (100506)
- Fabric 12: one piece  $9\frac{1}{2}$ in x  $2\frac{1}{2}$ in (24.1cm x 6.4cm) – Cottonbloom blueberry (100510)
- Fabric 13: two pieces  $5\frac{1}{2}$ in x  $1\frac{1}{2}$ in (14cm x 3.8cm) – Solid grape (120046)
- Wadding (batting): 33in x 16in (84cm x 40.5cm)
- Lining fabric (optional): 33in x 16in (84cm x 40.5cm)
- Fabric for back of cover: two pieces each 32in x  $10\frac{1}{2}$ in (81.3cm x 26.7cm) – Abloom fern (110082)
- Binding fabric:  $\frac{1}{4}$ yd (25cm) – Abloom fern (110082)
- Quilter's ruler, rotary cutter and mat
- Five buttons for fastening (optional) – Abloom buttons yellow/teal 18mm diameter (400057)
- Pillow pad to fit cover

## Fabric Notes

Pieces needed from Solid fabrics can be cut horizontally or vertically. The print fabrics for the middle of each lantern look best if fussy cut, to centre attractive motifs within the shape. Extra fabric is suggested in the Materials list if you wish to do this.

## Finished Size

$31\frac{1}{2}$ in x  $14\frac{1}{2}$ in (80cm x 36.8cm)

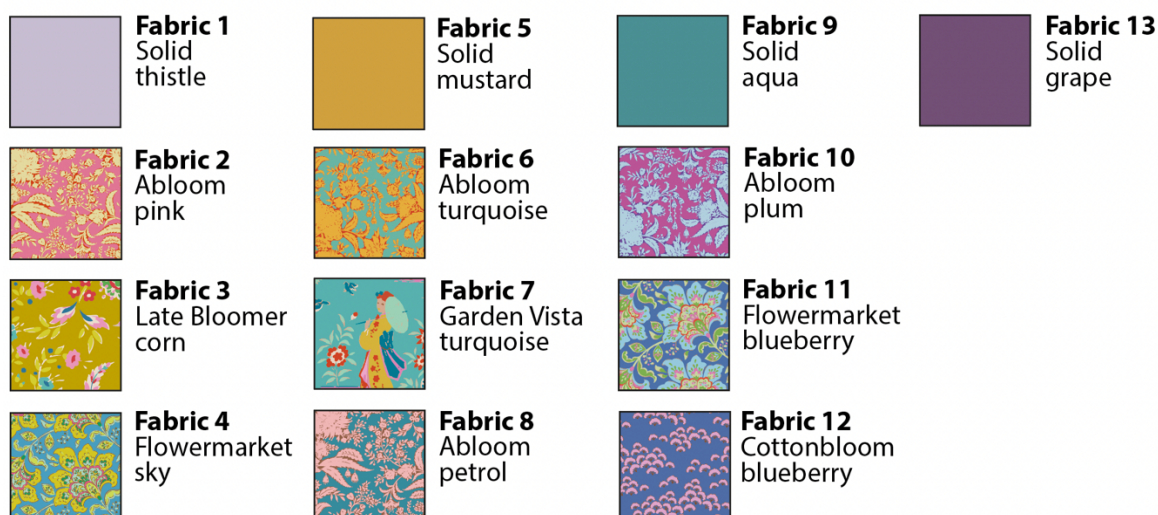
## General Notes

- Fabric quantities are based on a usable width of 42in (107cm), unless otherwise stated.
- Measurements are in imperial inches with metric conversions in brackets – use only *one* system throughout (preferably inches). Width measurements are generally given first.
- Before using your fabrics, press and trim as needed to square up the fabric pattern/weave, using a quilting ruler to cut the top raw edge at 90 degrees to the selvages.
- Use ¼in (6mm) seams unless otherwise instructed.
- Read all the instructions through before you start.
- Always make one complete block as a test before going on to make the remaining blocks.

## Pillow Layout

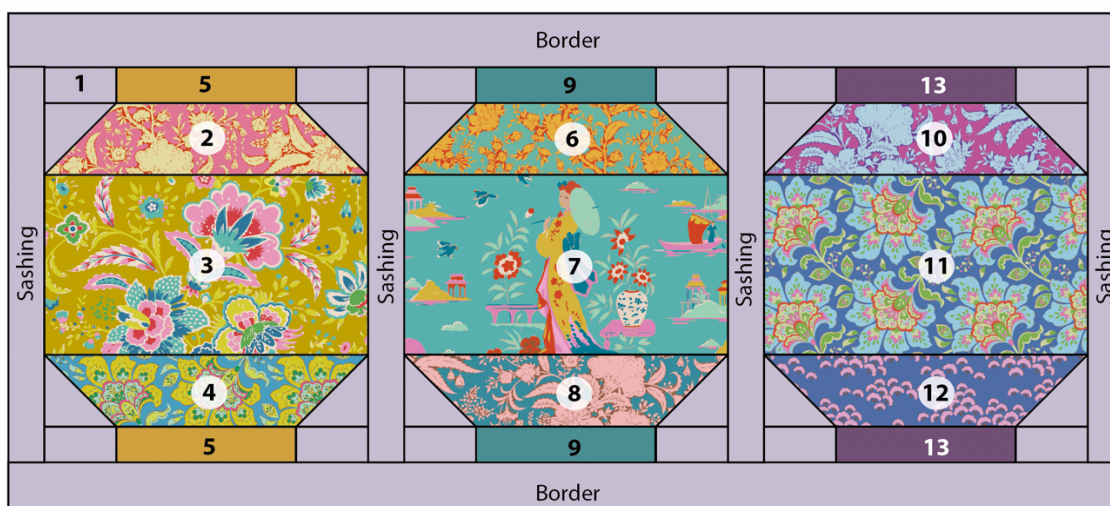
**1** The pillow is made up of three lantern blocks. The blocks are separated by narrow sashing, with slightly wider border strips along the top and bottom of the pillow. See **Fig A** for the fabrics used and **Fig B** for the pillow layout and fabric positions.

**Fig A** Fabric swatches (thistle pillow)



**Fig B** Pillow layout and fabric positions

Numbers indicate fabrics used (see Fig A)





## Cutting Out

**2** Fabric 1 is used for the sashing and borders and it's best to cut these strips first, saving all offcuts for the blocks. Cut the following strips.

- Sashing – four strips each  $1\frac{1}{2}\text{in} \times 11\frac{1}{2}\text{in}$  (3.8cm x 29.2cm).
- Border – two strips each  $31\frac{1}{2}\text{in} \times 2\text{in}$  (80cm x 5.1cm).

For the blocks cut the following pieces from Fabric 1.

- Twelve of piece **a** –  $2\frac{1}{2}\text{in} \times 1\frac{1}{2}\text{in}$  (6.4cm x 3.8cm).
- Twelve of piece **d** –  $2\frac{1}{2}\text{in}$  (6.4cm) square.

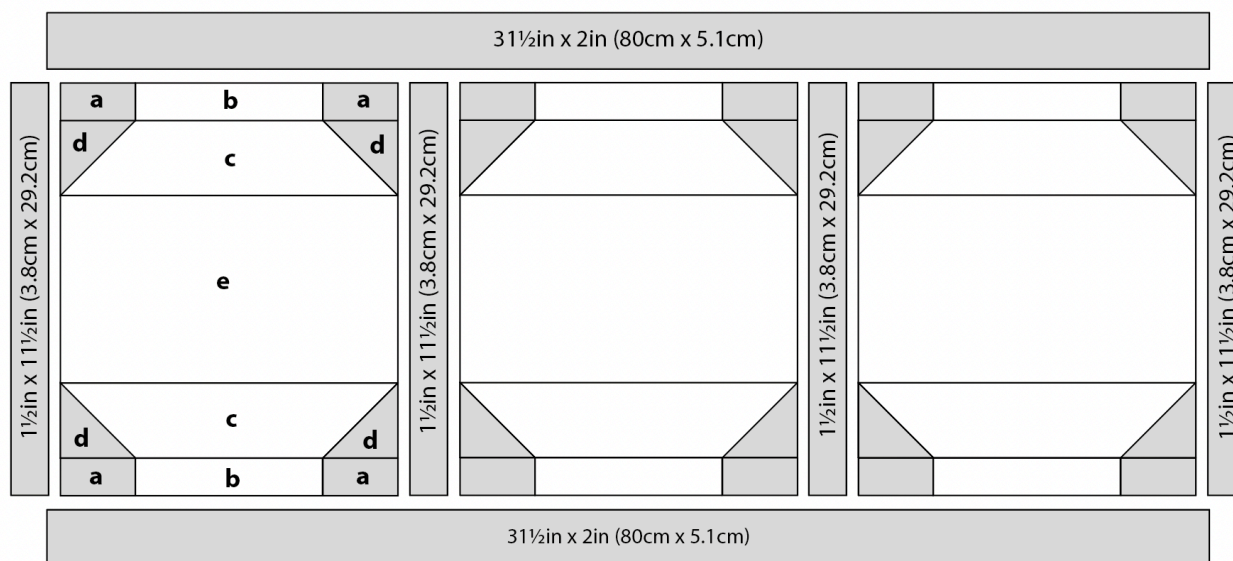
**3** When cutting the rest of the fabrics for the blocks, refer to **Fig C** for the cut measurements – the blocks are all identical. Refer to **Fig B** for the fabric positions. The Materials list gives the specific sizes to cut if you wish to use this as a checklist. The print fabrics for the middle of each lantern look best if fussy cut, to centre attractive motifs within the shape. Extra fabric is suggested in the Materials list if you wish to do this.

**4** Cut the binding fabric into three strips  $2\frac{1}{2}\text{in}$  (6.4cm) x width of fabric. Sew them together end to end and press seams open. Press in half along the length, wrong sides together.

### Fig C Pillow cut measurements

Sizes include seam allowances

All pieces to be cut initially as squares or rectangles



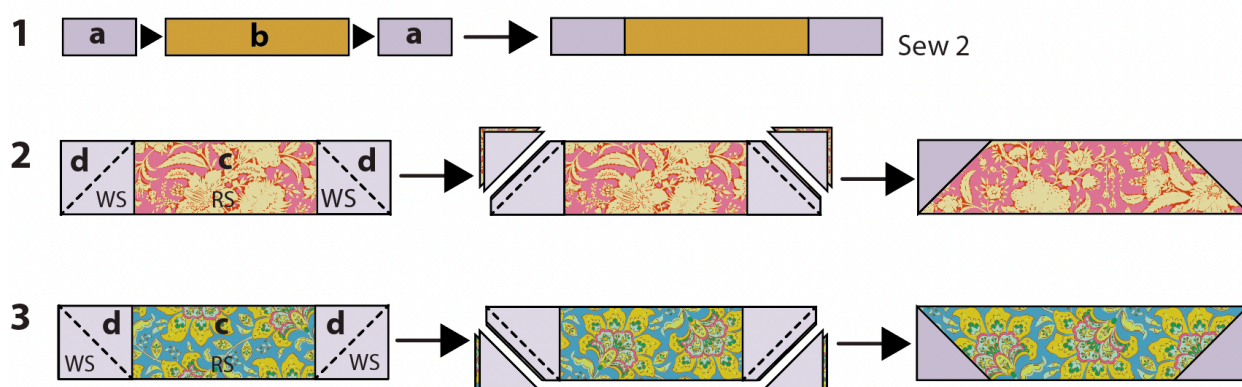
- a  $2\frac{1}{2}\text{in} \times 1\frac{1}{2}\text{in}$  (6.4cm x 3.8cm)
- b  $5\frac{1}{2}\text{in} \times 1\frac{1}{2}\text{in}$  (14cm x 3.8cm)
- c  $9\frac{1}{2}\text{in} \times 2\frac{1}{2}\text{in}$  (24.1cm x 6.4cm)
- d  $2\frac{1}{2}\text{in}$  (6.4cm) square
- e  $9\frac{1}{2}\text{in} \times 5\frac{1}{2}\text{in}$  (24.1cm x 14cm) – fussy cut if desired for Fabrics 3, 7 and 11

## Making a Lantern Block

**5** All of the blocks have the same basic construction, using simple techniques. The left-hand block will be described and illustrated. Lay out the correct pieces for the block and follow **Fig D** to make the top and bottom units of the block. Using  $\frac{1}{4}\text{in}$  (6mm) seams, sew together pieces **a, b, a** (**Fig D 1**). Press the seams inwards. Repeat this to sew a second unit.

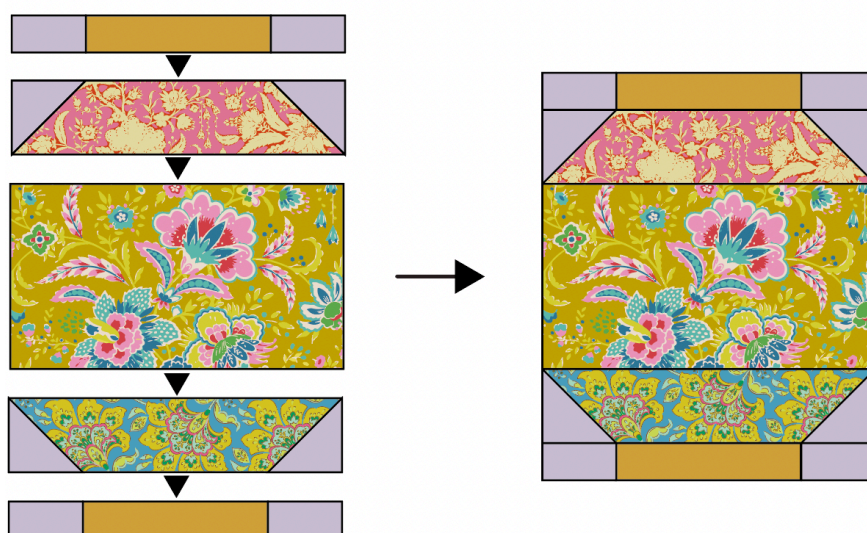
**6** Now make the corner triangle units as in **Fig D 2**. Take a rectangle **c** and place it right side up. Take two **d** squares and pencil mark a diagonal line on the wrong side of each. Place the squares right sides together with the rectangle, aligning the edges and with the marked lines in the directions shown in the diagram. Sew along the marked lines. Trim off excess fabric  $\frac{1}{4}$ in (6mm) past the sewn lines and then press the triangles outwards. Use the same process to make the other **c/d** unit, but changing the **c** fabric and angling the marked and sewn line in the directions shown in **Fig D 3**.

**Fig D** Making a lantern block



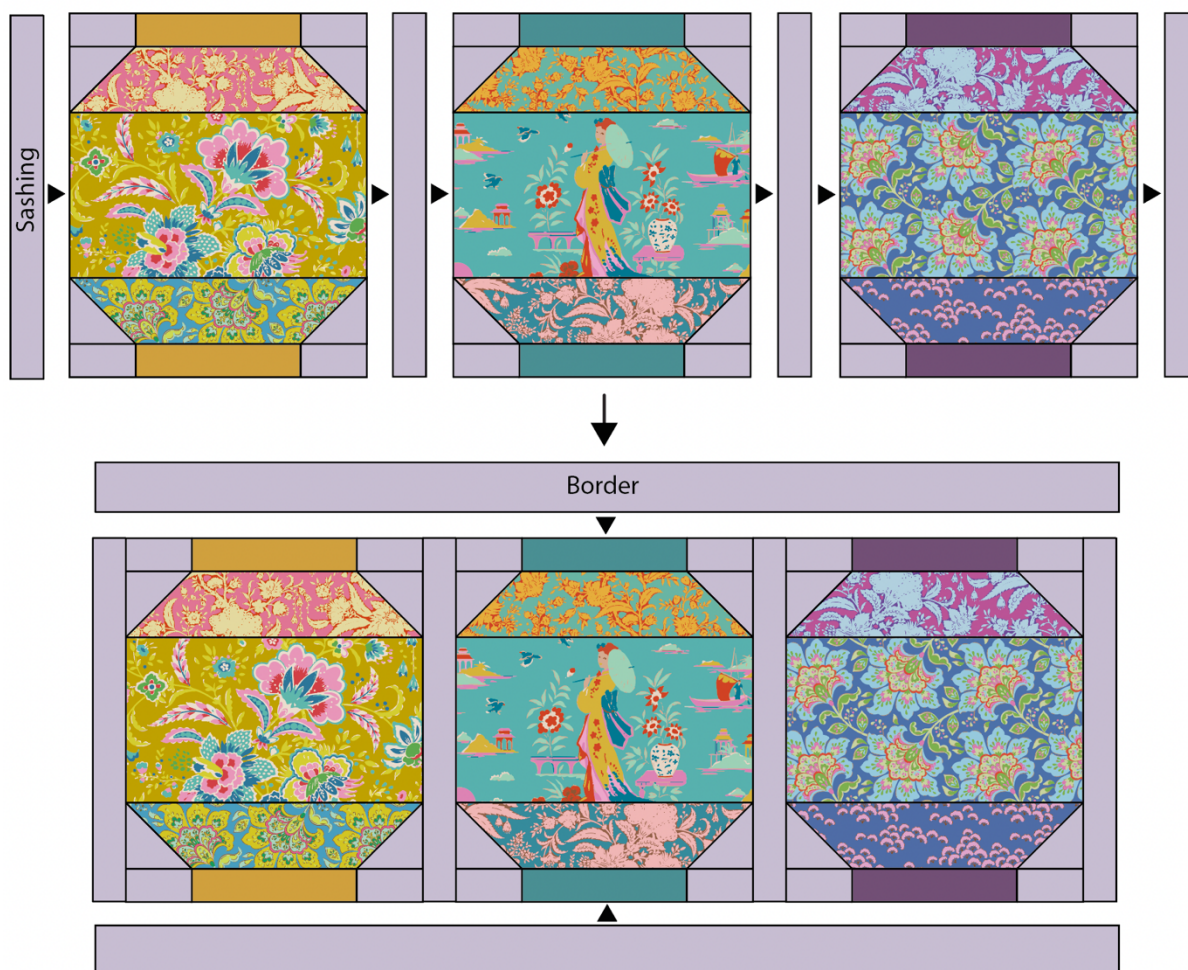
**7** Take the sewn units and the lantern centre piece and sew together as in **Fig E**, pressing seams after each stage. Check the block is  $9\frac{1}{2}$ in x  $11\frac{1}{2}$ in (24.1cm x 29.2cm) (unfinished). Repeat the block-making process to make the other two blocks, changing fabrics as shown in **Fig B**.

**Fig E** Assembling a block



### Assembling the Pillow

**8** Follow **Fig F** to assemble the patchwork, sewing the sashing strips to the sides of the blocks first. Use  $\frac{1}{4}$ in (6mm) seams and press the seams towards the sashing (or open if you prefer). Finally, sew the border strips into place at the top and bottom of the patchwork. Press the seams towards the borders or open.

**Fig F** Assembling the pillow

## Quilting and Finishing

**9** Make a quilt sandwich of the patchwork, wadding (batting) and lining fabric (if using). Quilt as desired. Trim off excess wadding and lining fabric to match the patchwork size.

**10** To make up the pillow cover, take the two pieces of fabric for the pillow back and on one long edge of each piece, create a hem by turning the edge over by 1 in (2.5cm), twice. Sew the seams with matching thread and press (**Fig G**). The diagram is shown in greys, so you can use the Tilda fabric and buttons suggested in the Materials list, or those of your choice.

**11** For the fastening, using your sewing machine, create five equally spaced buttonholes within the hem of one of the pieces. Sew five buttons onto the other piece, matching their positions to the buttonholes. Note: Instead of making buttonholes, you could use a hook and loop fastening, such as Velcro to fasten the cover and sew on the buttons as a decorative feature.

**12** The pillow has a bound edge, so the pieces are assembled with right sides out, as follows. Place the quilted patchwork right side down. On the backing, fasten the buttons into the buttonholes and then place the whole piece on top of the patchwork, right side up. Check it is the same size as the patchwork, trimming any raw edges if needed. Make sure the outer edges



of all pieces are aligned. Pin or tack (baste) the layers together and then bind as normal. As you sew the binding in place it will fix the other layers together. Press the cover and insert a pillow pad to finish.

**Fig G** Making up with a button fastening

