



Fabric Roll Pillow

(Coral/lavender colourway)

This pillow is easy to make as it is created using strip piecing, which produces the same patchwork panel for the front and back of the pillow. It is made in a similar way to a normal pillowcase, with an internal pocket to house the pillow pad. The design is also available in a blush/teal colourway – see tildasworld.com for the instructions. The first part of the Materials list gives individual fabrics for one pillow, with fabrics cut from the bolt. If you wish you can save time by using a Cotton Beach fabric roll and the second version of the Materials list gives the fabrics needed if you choose this option. There are actually sufficient 2½in (6.4cm) width of fabric strips in a fabric roll to make both pillow colourways if you wish.

Materials

Fabrics if Cutting from the Width (for one pillow)

- Fabric 1: 36in x 10½in (91.5cm x 26.7cm) – Chambray coral (160014)
- Fabric 2: ¾yd (75cm) – Chambray lavender (160009)
- Fabric 3: ½yd (15cm) – Limpet Shell grey (100328)
- Fabric 4: ½yd (15cm) – Scallop Shell grey (100326)
- Fabric 5: ½yd (15cm) – Sea Anemone grey (100327)
- Fabric 6: ½yd (15cm) – Ocean Flower grey (100330)
- Fabric 7: ½yd (15cm) – Coral Reef ginger (100329)
- Fabric 8: ½yd (15cm) – Limpet Shell lilac (100323)
- Fabric 9: ½yd (15cm) – Sea Anemone lilac (100322)
- Fabric 10: ½yd (15cm) – Ocean Flower coral (100325)
- Fabric 11: ½yd (15cm) – Scallop Shell coral (100321)
- Fabric 12: ½yd (15cm) – Coral Reef coral (100324)
- Wadding (batting): two pieces each 28in x 23in (71.1cm x 58.4cm)
- Piecing and quilting threads
- Quilter's ruler, rotary cutter and mat
- Pillow pad to fit cover
- Two snap fasteners (optional)

Fabrics if Using a Fabric Roll (for one pillow)

- Fabric 1: 36in x 10½in (91.5cm x 26.7cm) – Chambray coral (160014)
- Fabric 2: ¾yd (75cm) – Chambray lavender (160009)
- 2½in x 42in (6.4cm x 107cm) strip of the following ten fabrics:
 - Fabric 3: Limpet Shell grey (100328)
 - Fabric 4: Scallop Shell grey (100326)
 - Fabric 5: Sea Anemone grey (100327)
 - Fabric 6: Ocean Flower grey (100330)
 - Fabric 7: Coral Reef ginger (100329)
 - Fabric 8: Limpet Shell lilac (100323)
 - Fabric 9: Sea Anemone lilac (100322)
 - Fabric 10: Ocean Flower coral (100325)
 - Fabric 11: Scallop Shell coral (100321)
 - Fabric 12: Coral Reef coral (100324)
- Wadding (batting): two pieces each 28in x 23in (71.1cm x 58.4cm)

- Piecing and quilting threads
- Quilter's ruler, rotary cutter and mat
- Pillow pad to fit cover
- Two snap fasteners (optional)



Fabric Notes

The print fabrics need to be cut across the width of the fabric, so fat eighths are **not** suitable. If using a fabric roll, see the project introduction. A roll will not have sufficient fabric for Fabric 1 and Fabric 2, so these have to be cut from the bolt.

Finished Size

25½in x 20in (64.8cm x 50.8cm) approximately

General Notes

- Fabric quantities are based on a usable width of 42in (107cm), unless otherwise stated.
- Measurements are in imperial inches with metric conversions in brackets – use only *one* system throughout (preferably inches).
- Width measurements are generally given first.
- Press all fabrics before cutting.
- Use ¼in (6mm) seams unless otherwise instructed.
- Read all the instructions through before you start.

Pillow Layout

1 The pillow features a strip-pieced patchwork panel for the front and an identical panel for the back. Refer to **Fig A** for the fabrics used.

Fig A Fabric swatches (Fabric Roll Pillow – coral/lavender colourway)



Cutting Out

2 Strip-Pieced Unit 1 is made up of fabric strips from the print fabrics, cut $2\frac{1}{2}$ in x 42in (6.4cm x 107cm) (width of fabric). From each of Fabric 3, 4, 5, 6, 7, 8, 9, 10, 11 and 12, cut one strip, as shown in **Fig B** (or select these strips from the fabric roll if using a roll). These strips are sufficient for the front and the back panel.

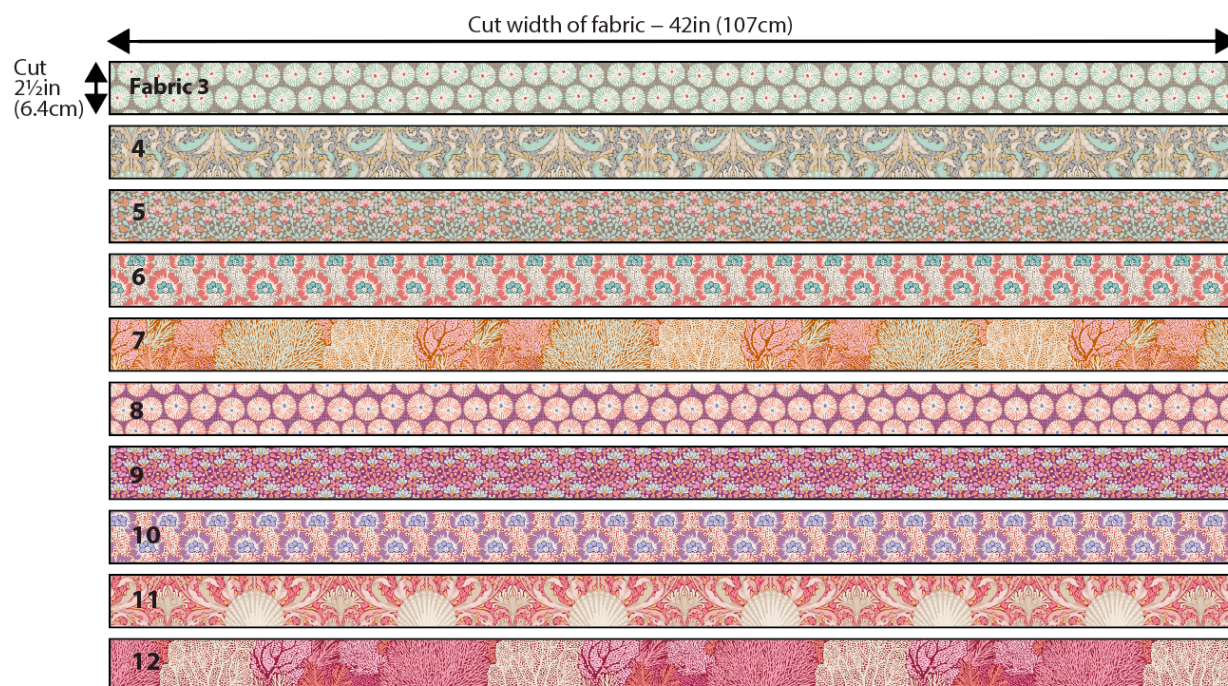
3 Strip-Pieced Unit 2 is made up of rectangles of Fabric 1 and Fabric 2, joined together and cut into segments.

- From Fabric 1 cut a piece 36in x $10\frac{1}{2}$ in (91.5cm x 26.7cm).
- From Fabric 2 cut a piece 36in x $10\frac{1}{2}$ in (91.5cm x 26.7cm).

4 From Fabric 2, cut two pieces for the facings/inner pocket, each 26in x 8in (66cm x 20.3cm).

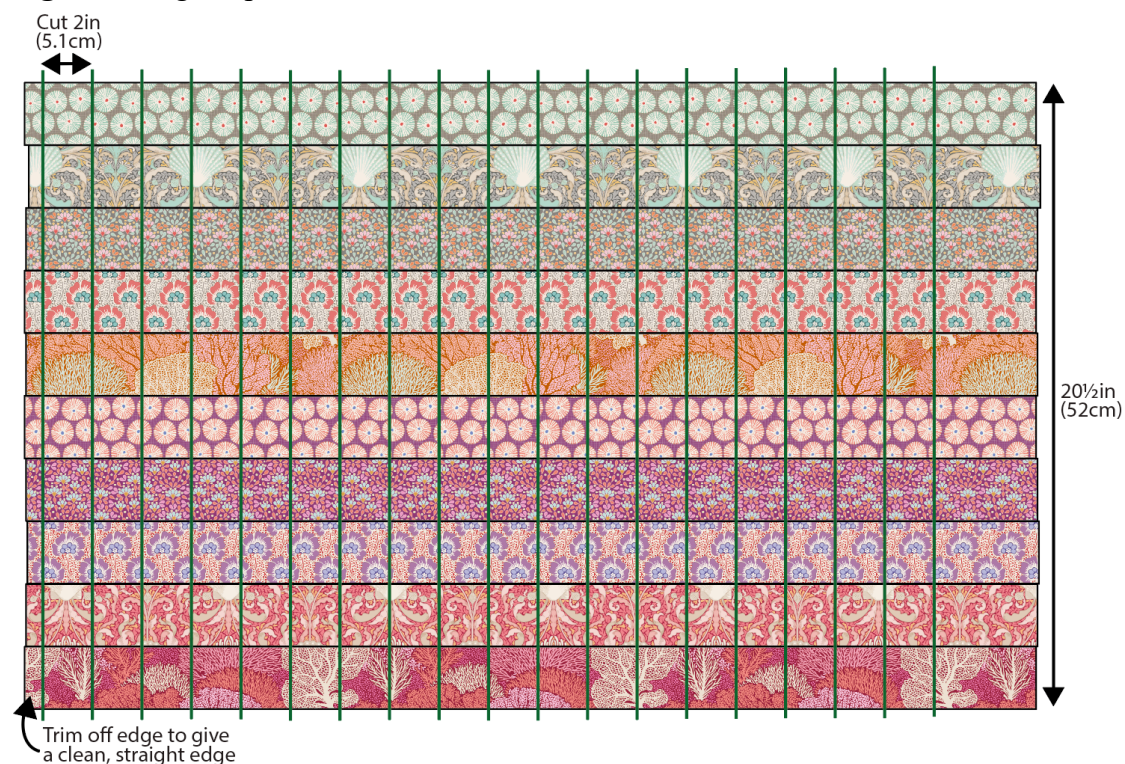
Fig B Strip sizes and fabric colours

Numbers indicate fabrics – see Fig A

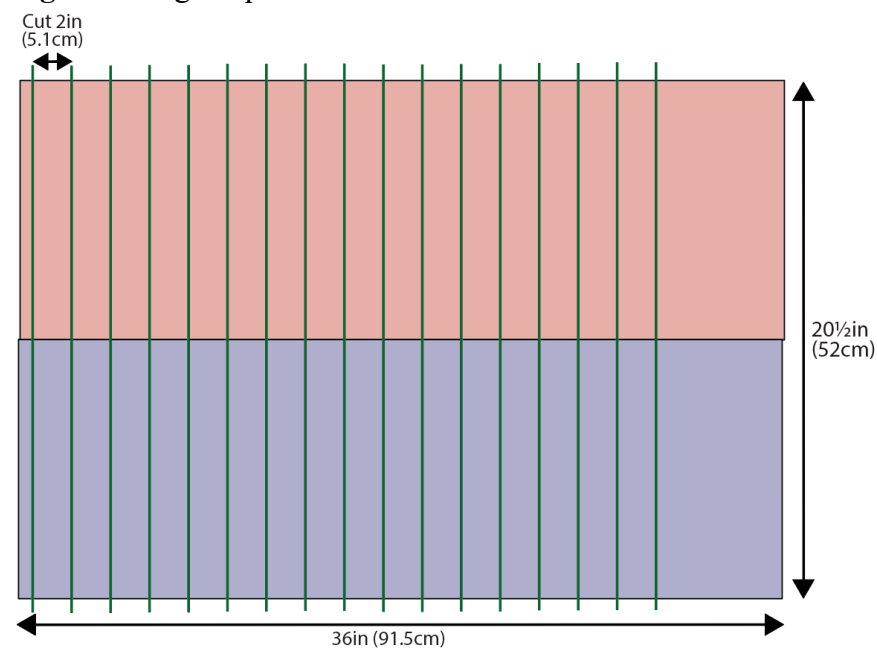


Making the Strip-Pieced Units

5 Strip-Pieced Unit 1: Take the print fabric strips and arrange them in horizontal rows as in **Fig C**. Using a $\frac{1}{4}$ in (6mm) seam, sew the rows together, pressing seams open or to one side. Check the sewn unit is the size given in the diagram. On the left-hand vertical edge, trim the unit to give a straight, clean edge. Now use your quilting ruler to cut the strip-pieced unit into eighteen 2in (5.1cm) wide segments. Put nine segments into one pile for the front of the pillow and the other nine into a pile for the back of the pillow.

Fig C Cutting Strip-Pieced Unit 1

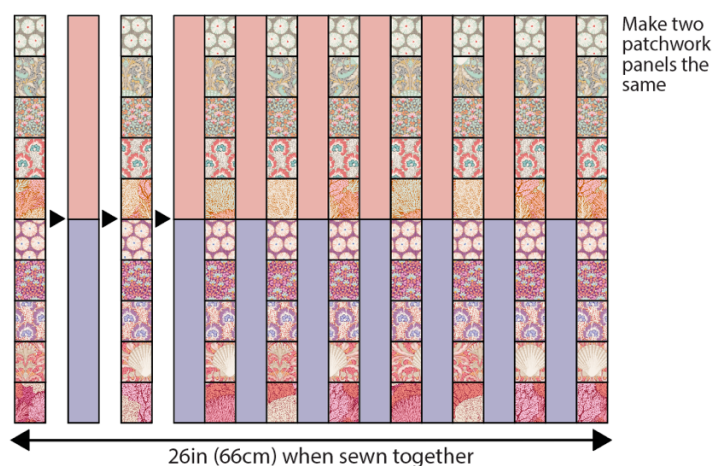
6 Strip-Pieced Unit 2: Take the two large rectangles of Fabric 1 and Fabric 2 and sew them together along their long edge and press the seam open or to one side. On the left-hand vertical edge, trim the unit to give a straight, clean edge (**Fig D**). Now use your quilting ruler to cut the unit into sixteen 2in (5.1cm) wide segments. Put eight segments into one pile for the front of the pillow and the other eight into a pile for the back of the pillow.

Fig D Cutting Strip-Pieced Unit 2

7 Working on the front panel first, arrange the nine Unit 1 segments as in **Fig E**, alternating them with eight Unit 2 segments. Using a $\frac{1}{4}$ in (6mm) seam, sew the segments together and press the seams open or to one side. Check the panel is 26in x 20 $\frac{1}{2}$ in (66cm x 52cm).

8 Repeat this process to prepare the patchwork panel for the back of the pillow.

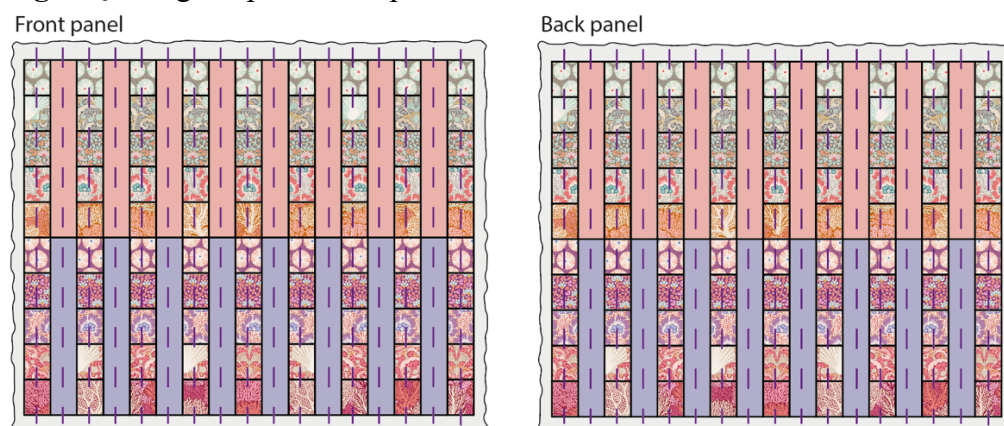
Fig E Sewing the strip-pieced segments together



Quilting the Panels

9 Take the pieces of wadding (batting) and place them on the back of each of the patchwork panels. Pin or tack (baste) together and quilt as desired – we used a simple linear pattern as shown in **Fig F**. Press the work and then trim the wadding to the same size as the patchwork.

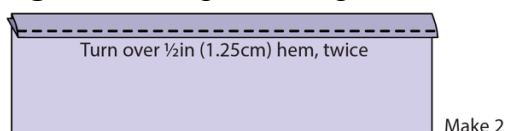
Fig F Quilting the patchwork panels



Adding the Facings

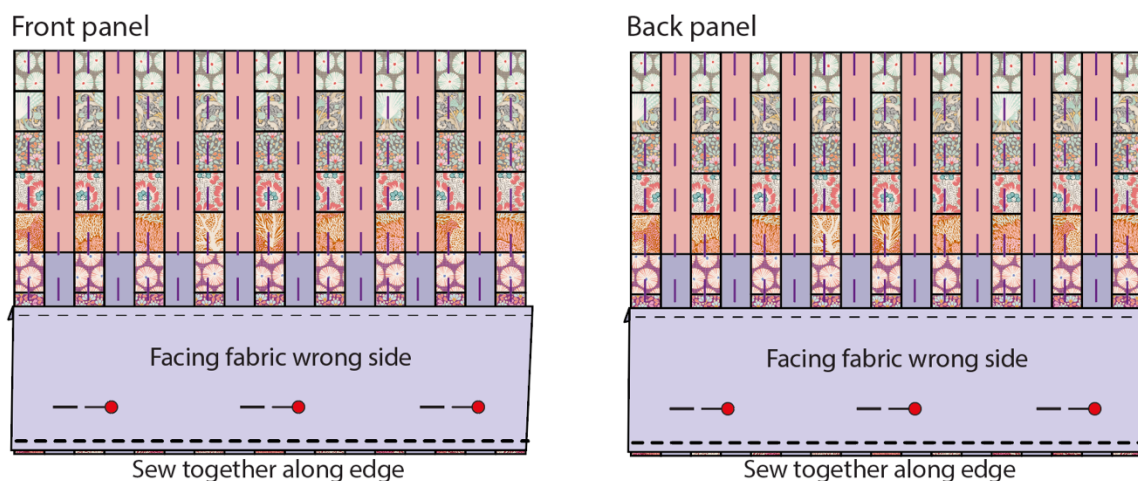
10 To prepare the facings/inner pocket, on one long edge of each of the facing pieces of fabric, turn over and press a $\frac{1}{2}$ in (1.25cm) hem, twice (**Fig G**). Sew the seam and press again.

Fig G Hemming the facings



11 The facings will create a neat, secure edge on the opening of the pillow cover, and also provide an inner pocket to hold the pillow pad in place. Place the two quilted panels right side up as in **Fig H**. Place a facing on the top of the patchwork, right sides together and with raw edges aligned, as shown. Sew a *scant* $\frac{1}{4}$ in (6mm) seam along the lower edge to fix the pieces together. Repeat this with the other facing on the other panel. Turn the patchwork panels over to the wrong side, so the wadding is showing. Fold each facing over to the wrong side and press to create a neat, seamed edge on the bottom of each panel.

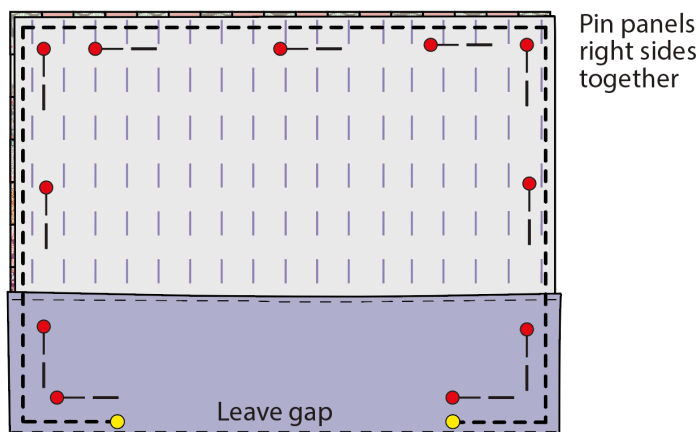
Fig H Adding the facings



Making Up the Pillow

12 Place the front and back of the pillow right sides together, as in **Fig I**. Make sure all of the edges are aligned and that the short sides of the facing pieces are flat and in alignment with the side edges of the patchwork. Place pins around the edge to secure the work. Using a normal $\frac{1}{4}$ in (6mm) seam, sew along the sides and top of the work. On the bottom edge, sew from the left-hand side edge inwards for about 5in (12.7cm) and then stop, roughly where shown by the yellow dot. Sew on the spot for several stitches to secure the end of the sewing line. Do the same on the right-hand side. This will leave a gap across the centre, through which you will be able to insert the pillow pad.

Fig I Sewing the pillow cover together



13 Turn the work through to the right side, poking out the corners well and then press the seams. Insert your pillow pad, tucking its lower edge inside one of the facing pockets. If your pad is very plump, you may decide to hand sew two snap fasteners along the open edge, to secure the opening.

Fabric Roll Pillow

(Blush/teal colourway)

This pillow is easy to make as it is created using strip piecing, which produces the same patchwork panel for the front and back of the pillow. It is made in a similar way to a normal pillowcase, with an internal pocket to house the pillow pad. The design is also available in a coral/lavender colourway – see tildasworld.com for the instructions. The first part of the Materials list gives individual fabrics for one pillow, with fabrics cut from the bolt. If you wish, you can save time by using a Cotton Beach fabric roll and the second version of the Materials list gives the fabrics needed if you choose this option. There are actually sufficient 2½in (6.4cm) width of fabric strips in a fabric roll to make both pillow colourways if you wish.

Materials

Fabrics if Cutting from the Width (for one pillow)

- Fabric 1: 36in x 10½in (91.5cm x 26.7cm) – Chambray blush (160002)
- Fabric 2: ¾yd (75cm) – Chambray teal (160004)
- Fabric 3: ⅛yd (15cm) – Sea Anemone honey (100337)
- Fabric 4: ⅛yd (15cm) – Ocean Flower honey (100340)
- Fabric 5: ⅛yd (15cm) – Limpet Shell teal (100338)
- Fabric 6: ⅛yd (15cm) – Scallop Shell teal (100336)
- Fabric 7: ⅛yd (15cm) – Coral Reef teal (100339)
- Fabric 8: ⅛yd (15cm) – Scallop Shell blue (100331)
- Fabric 9: ⅛yd (15cm) – Sea Anemone blue (100332)
- Fabric 10: ⅛yd (15cm) – Coral Reef blue (100334)
- Fabric 11: ⅛yd (15cm) – Ocean Flower blue (100335)
- Fabric 12: ⅛yd (15cm) – Limpet Shell blue (100333)
- Wadding (batting): two pieces each 28in x 23in (71.1cm x 58.4cm)
- Piecing and quilting threads
- Quilter's ruler, rotary cutter and mat
- Pillow pad to fit cover
- Two snap fasteners (optional)

Fabrics if Using a Fabric Roll (for one pillow)

- Fabric 1: 36in x 10½in (91.5cm x 26.7cm) – Chambray blush (160002)
- Fabric 2: ¾yd (75cm) – Chambray teal (160004)
- 2½in x 42in (6.4cm x 107cm) strip of the following ten fabrics:
 - Fabric 3: Sea Anemone honey (100337)
 - Fabric 4: Ocean Flower honey (100340)
 - Fabric 5: Limpet Shell teal (100338)
 - Fabric 6: Scallop Shell teal (100336)
 - Fabric 7: Coral Reef teal (100339)
 - Fabric 8: Scallop Shell blue (100331)
 - Fabric 9: Sea Anemone blue (100332)
 - Fabric 10: Coral Reef blue (100334)
 - Fabric 11: Ocean Flower blue (100335)
 - Fabric 12: Limpet Shell blue (100333)
- Wadding (batting): two pieces each 28in x 23in (71.1cm x 58.4cm)

- Piecing and quilting threads
- Quilter's ruler, rotary cutter and mat
- Pillow pad to fit cover
- Two snap fasteners (optional)



Fabric Notes

The print fabrics need to be cut across the width of the fabric, so fat eighths are **not** suitable. If using a fabric roll, see the project introduction. A roll will not have sufficient fabric for Fabric 1 and Fabric 2, so these have to be cut from the bolt.

Finished Size

25½in x 20in (64.8cm x 50.8cm) approximately

General Notes

- Fabric quantities are based on a usable width of 42in (107cm), unless otherwise stated.
- Measurements are in imperial inches with metric conversions in brackets – use only *one* system throughout (preferably inches).
- Width measurements are generally given first.
- Press all fabrics before cutting.
- Use ¼in (6mm) seams unless otherwise instructed.
- Read all the instructions through before you start.

Pillow Layout

1 The pillow features a strip-pieced patchwork panel for the front and an identical panel for the back. Refer to **Fig A** for the fabrics used.

Fig A Fabric swatches (Fabric Roll Pillow – blush/teal colourway)



Cutting Out

2 Strip-Pieced Unit 1 is made up of fabric strips from the print fabrics, cut $2\frac{1}{2}$ in x 42in (6.4cm x 107cm) (width of fabric). From each of Fabric 3, 4, 5, 6, 7, 8, 9, 10, 11 and 12, cut one strip, as shown in **Fig B** (or select these strips from the fabric roll if using a roll). These strips are sufficient for the front and the back panel.

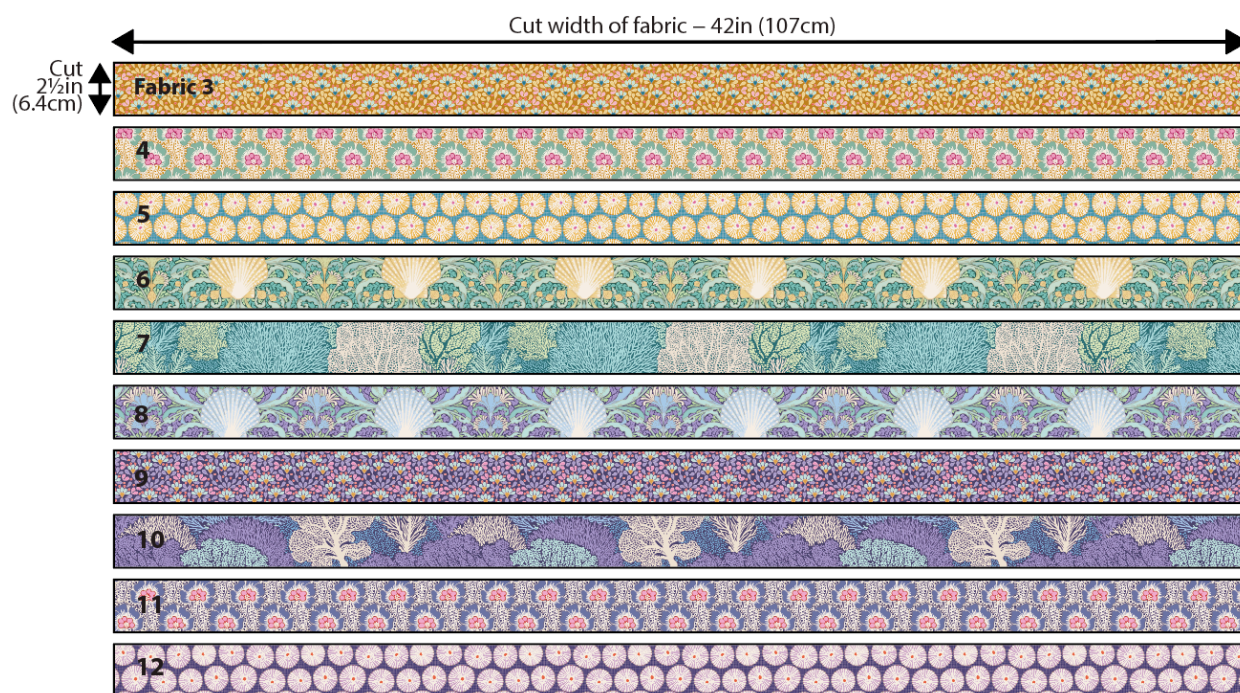
3 Strip-Pieced Unit 2 is made up of rectangles of Fabric 1 and Fabric 2, joined together and cut into segments.

- From Fabric 1 cut a piece 36in x $10\frac{1}{2}$ in (91.5cm x 26.7cm).
- From Fabric 2 cut a piece 36in x $10\frac{1}{2}$ in (91.5cm x 26.7cm).

4 From Fabric 2, cut two pieces for the facings/inner pocket, each 26in x 8in (66cm x 20.3cm).

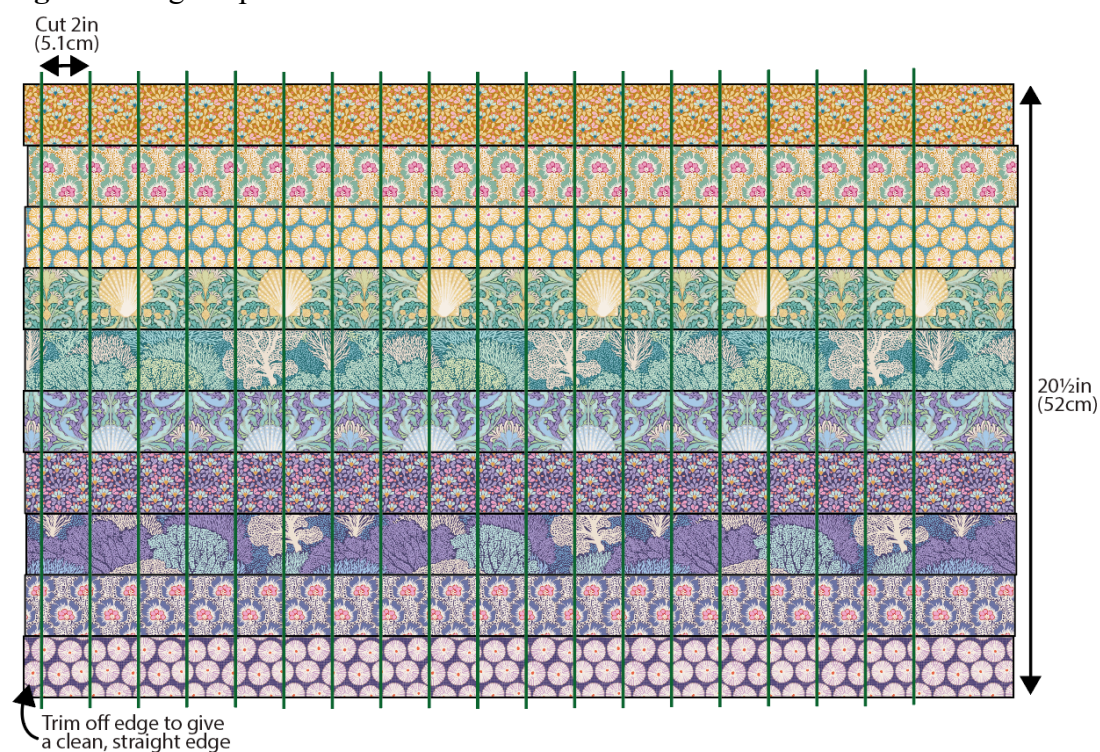
Fig B Strip sizes and fabric colours

Numbers indicate fabrics – see Fig A

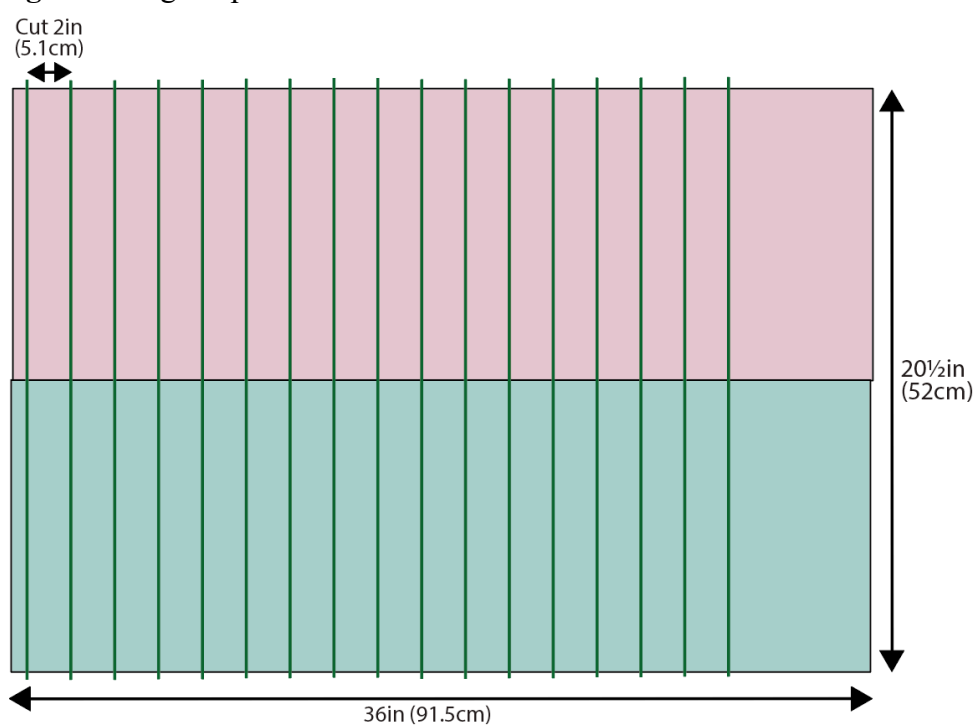


Making the Strip-Pieced Units

5 Strip-Pieced Unit 1: Take the print fabric strips and arrange them in horizontal rows as in **Fig C**. Using a $\frac{1}{4}$ in (6mm) seam, sew the rows together, pressing seams open or to one side. Check the sewn unit is the size given in the diagram. On the left-hand vertical edge, trim the unit to give a straight, clean edge. Now use your quilting ruler to cut the strip-pieced unit into eighteen 2in (5.1cm) wide segments. Put nine segments into one pile for the front of the pillow and the other nine into a pile for the back of the pillow.

Fig C Cutting Strip-Pieced Unit 1

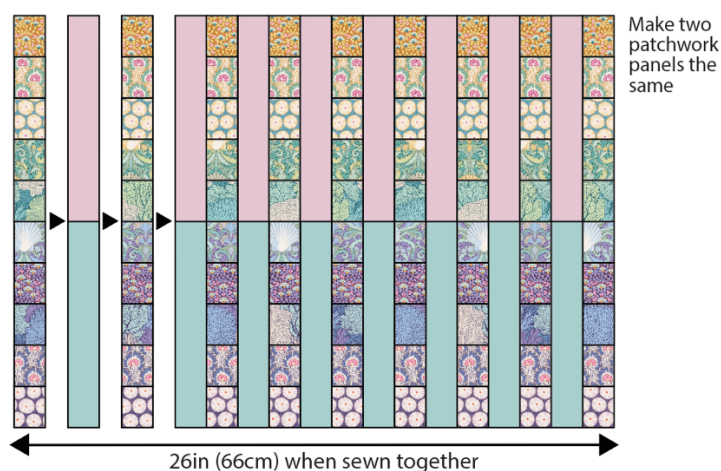
6 Strip-Pieced Unit 2: Take the two large rectangles of Fabric 1 and Fabric 2 and sew them together along their long edge and press the seam open or to one side. On the left-hand vertical edge, trim the unit to give a straight, clean edge (**Fig D**). Now use your quilting ruler to cut the unit into sixteen 2 in (5.1 cm) wide segments. Put eight segments into one pile for the front of the pillow and the other eight into a pile for the back of the pillow.

Fig D Cutting Strip-Pieced Unit 2

7 Working on the front panel first, arrange the nine Unit 1 segments as in **Fig E**, alternating them with eight Unit 2 segments. Using a $\frac{1}{4}$ in (6mm) seam, sew the segments together and press the seams open or to one side. Check the panel is 26in x 20 $\frac{1}{2}$ in (66cm x 52cm).

8 Repeat this process to prepare the patchwork panel for the back of the pillow.

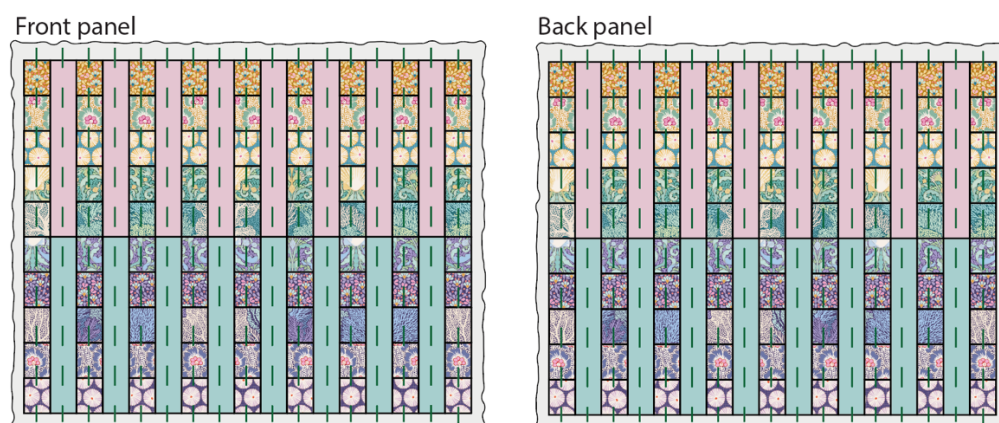
Fig E Sewing the strip-pieced segments together



Quilting the Panels

9 Take the pieces of wadding (batting) and place them on the back of each of the patchwork panels. Pin or tack (baste) together and quilt as desired – we used a simple linear pattern as shown in **Fig F**. Press the work and then trim the wadding to the same size as the patchwork.

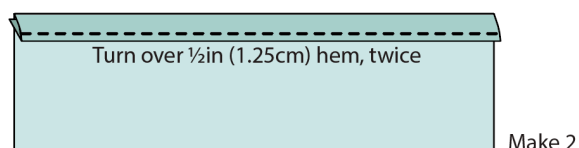
Fig F Quilting the patchwork panels



Adding the Facings

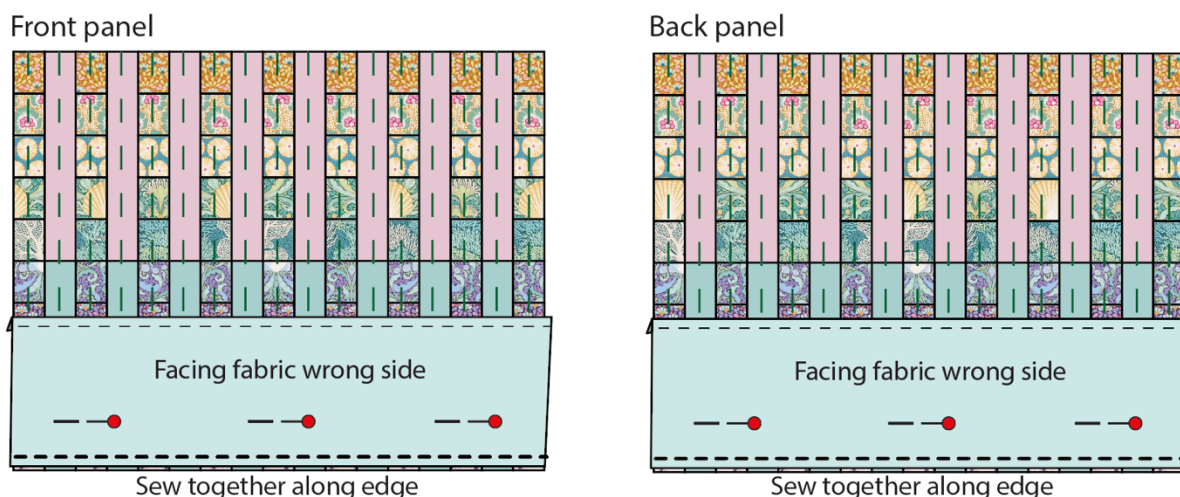
10 To prepare the facings/inner pocket, on one long edge of each of the facing pieces of fabric, turn over and press a $\frac{1}{2}$ in (1.25cm) hem, twice (**Fig G**). Sew the seam and press again.

Fig G Hemming the facings



11 The facings will create a neat, secure edge on the opening of the pillow cover, and also provide an inner pocket to hold the pillow pad in place. Place the two quilted panels right side up as in **Fig H**. Place a facing on the top of the patchwork, right sides together and with raw edges aligned, as shown. Sew a *scant* $\frac{1}{4}$ in (6mm) seam along the lower edge to fix the pieces together. Repeat this with the other facing on the other panel. Turn the patchwork panels over to the wrong side, so the wadding is showing. Fold each facing over to the wrong side and press to create a neat, seamed edge on the bottom of each panel.

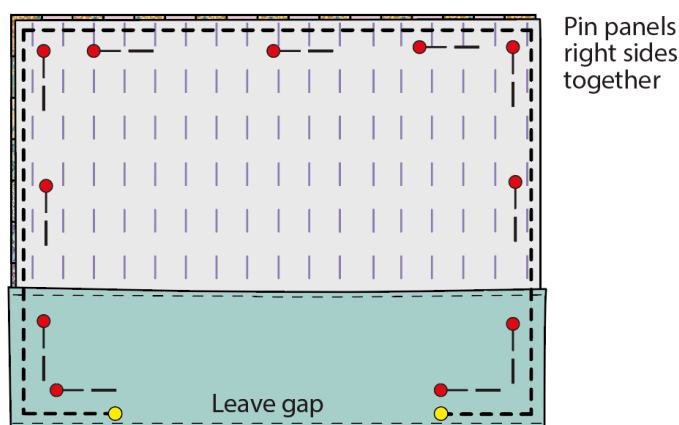
Fig H Adding the facings



Making Up the Pillow

12 Place the front and back of the pillow right sides together, as in **Fig I**. Make sure all of the edges are aligned and that the short sides of the facing pieces are flat and in alignment with the side edges of the patchwork. Place pins around the edge to secure the work. Using a normal $\frac{1}{4}$ in (6mm) seam, sew along the sides and top of the work. On the bottom edge, sew from the left-hand side edge inwards for about 5in (12.7cm) and then stop, roughly where shown by the yellow dot. Sew on the spot for several stitches to secure the end of the sewing line. Do the same on the right-hand side. This will leave a gap across the centre, through which you will be able to insert the pillow pad.

Fig I Sewing the pillow cover together



13 Turn the work through to the right side, poking out the corners well and then press the seams. Insert your pillow pad, tucking its lower edge inside one of the facing pockets. If your pad is very plump, you may decide to hand sew two snap fasteners along the open edge, to secure the opening.