



Maple Farm

Windflower Quilt



Windflower Quilt

Updated 17th of march 2021!

Materials

- Fabric 1: 1¼ yd (1.2m) small triangles/squares – Solid Aubergine (120036)
- Fabric 2: ¼ yd (25cm) – Thistle (120012)
- Fabric 3: ¼ yd (25cm) – Lavender Pink (120010)
- Fabric 4: ¼ yd (25cm) – Gwendelyn Umber (100270)
- Fabric 5: ½ yd (50cm) – Farm Flowers Rosehip (110009)
- Fabric 6: ¼ yd (25cm) – Gracie Lavender (100273)
- Fabric 7: ¼ yd (25cm) – Cherrybush Mauve (100262)
- Fabric 8: ¼ yd (25cm) – Blue Sage (120008)
- Fabric 9: ¼ yd (25cm) – Dusty Rose (120009)
- Fabric 10: ¼ yd (25cm) – Pauline Blueberry (100274)
- Fabric 11: ½ yd (50cm) – Gracie Sand (100267)
- Fabric 12: ¼ yd (25cm) – Birdie Rosehip (100265)
- Fabric 13: ¼ yd (25cm) – Gwendelyn Rosehip (100263)
- Fabric 14: ¼ yd (25cm) – Cornflower Blue (120024)
- Fabric 15: ¼ yd (25cm) – Cappuccino (120007)
- Fabric 16: ¼ yd (25cm) – Farm Berries Blue (110023)
- Fabric 17: ½ yd (50cm) – Wheatflower Rosehip (100261)
- Fabric 18: ¼ yd (25cm) – Farm Berries Sand (110020)
- Fabric 19: ¼ yd (25cm) – Pauline Umber (100268)
- Fabric 20: ¼ yd (25cm) – Lilac (120030)
- Fabric 21: ¼ yd (25cm) – Soft Teal (120003)
- Fabric 22: ¼ yd (25cm) – Wheatflower Rosehip (100261)
- Fabric 23: ½ yd (50cm) – Gwendelyn Blueberry (100272)
- Fabric 24: ¼ yd (25cm) – Gracie Teal (000000)
- Fabric 25: ¼ yd (25cm) – Pauline Teal (100277)
- Fabric 26: ¼ yd (25cm) – Pink (120026)
- Fabric 27: ¼ yd (25cm) – Warm Sand (120002)
- Fabric 28: ¼ yd (25cm) – Gwendelyn Dijon (100278)
- Fabric 29: ½ yd (50cm) – Birdie Blueberry (100271)
- Fabric 30: ¼ yd (25cm) – Wheatflower Umber (100269)
- Fabric 31: ¼ yd (25cm) – Cherrybush Sand (100266)
- Fabric 32: ¼ yd (25cm) – Solid Terracotta (120035)
- Fabric 33: ¼ yd (25cm) – Lilac Mist (120011)
- Fabric 34: ¼ yd (25cm) – Gwendelyn Rosehip (100263)
- Fabric 35: ½ yd (50cm) – Wheatflower Dijon (100276)
- Fabric 36: ¼ yd (25cm) – Farm Flowers Lavender (110012)
- Fabric 37: ¼ yd (25cm) – Pauline Mauve (100264)
- Wadding (batting) 81in x 96in (205.74cm x 243.84cm)
- Backing fabric 2¼yd (206cm) of 108" (275cm)– Luna Teal/Sage (wideback) (150003)
- Binding fabric ⅝ yd (60cm) – Cherrybush Slate (000000)
- Piecing and quilting threads
- Quilter's ruler, rotary cutter and mat

Finished Size

62in x 74in (157.5cm x 188cm) approx. after binding

Sewing Notes

- Fabric quantities given are based on a usable width of 42" (107cm). The Luna Teal/Sage fabric used for the backing is 108" (274cm) wide.
- Measurements are in imperial inches with metric conversions in brackets. Use only one system throughout, preferably inches.
- Press all fabrics before cutting.
- Use 1/4" (6mm) seams unless otherwise instructed.
- Read through all instructions before you start.

Cutting

This quilt is made with 6 colorways. Figure A shows fabric swatches, numbered for reference. Refer to this chart when cutting fabric for the quilt.

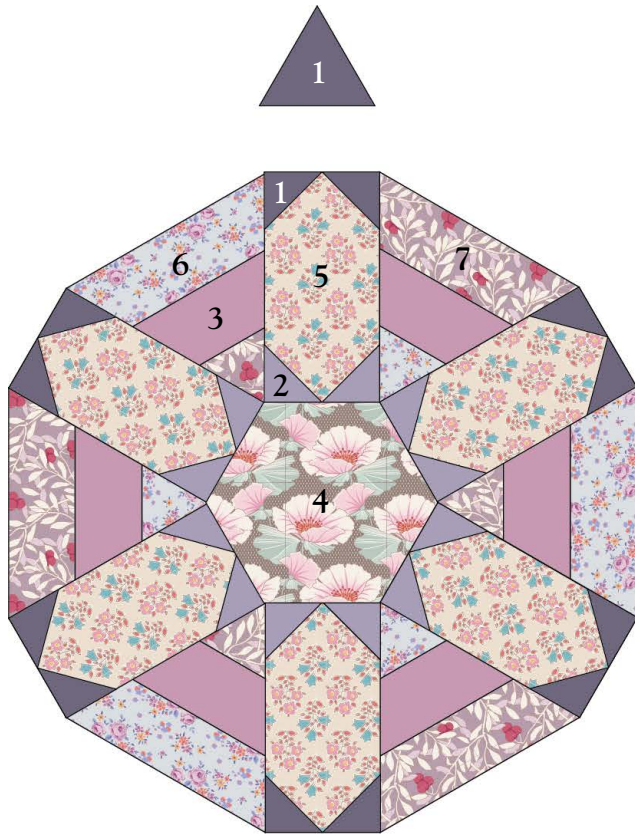
Fig A Fabric swatches (Windflower Quilt)



There are six colorways in the quilt. Each colorway will include cutting instructions for (4) blocks, and (1) half-block. Top/bottom insets and corners may be part of a colorway and they are noted in instructions.

Keep fabric organized by colorway and fabric number for easier layout.

Solid Aubergine, Fabric 1, is used for all small filler triangles and the squares that are sewn on one end of a rectangle. Cutting instructions are separate for this color.



Aubergine Small Triangles and Half-Square Triangles

From Fabric 1, cut:

(15) 1-3/4" strips, from the strips, cut

(356) 1-3/4" squares

(16) 2-7/8" strips, using the small triangle template, cut across the strips to make (60) small triangles

Block 1 (use colors 1,2, 3, 4, 5, 6, 7)

to make (4) full Blocks, (1) Half Block, and (2) Bottom Insets

From Fabric 2, cut

(3) 1-3/4" x wof strips, from the strips, cut

(56) 1-3/4" squares

From Fabric 3, 6, and 7, cut

(3) 2" x wof strips of each color,
place Fabric 3 in the center of each set,
sew along the long sides to make
(3) strip sets for pieced triangles

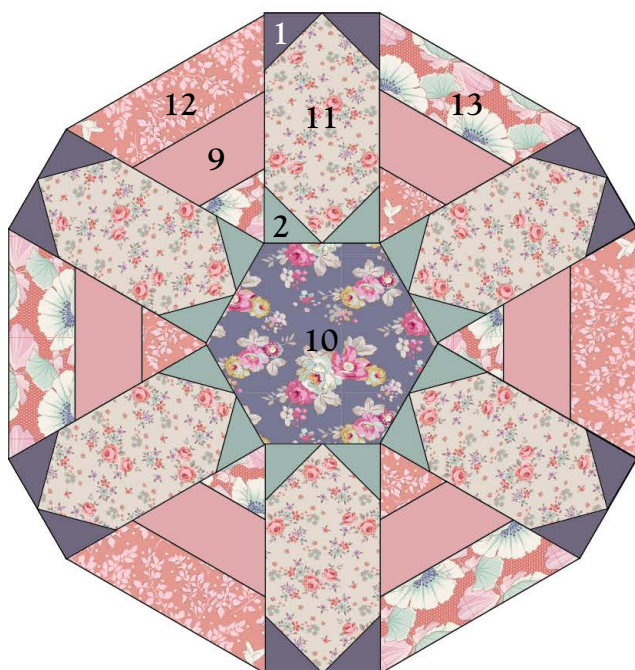
From Fabric 4, cut

(5) hexagons, using the hexagon template

From Fabric 5, cut

(5) 3" x wof strips, from the strips, cut

(30) 3" x 5-1/2" rectangles



Block 2 (use colors 1, 8, 9, 10, 11, 12, 13)

to make (4) full Blocks, (1) Half Block, (1) Corner and (1) Bottom Inset

From Fabric 8, cut

(3) 1-3/4" x wof strips, from the strips, cut

(56) 1-3/4" squares

From Fabric 9, 12, and 13, cut

(3) 2" x wof strips of each color,
place Fabric 9 in the center of each set,
sew along the long sides to make
(3) strip sets for pieced triangles

From Fabric 10, cut

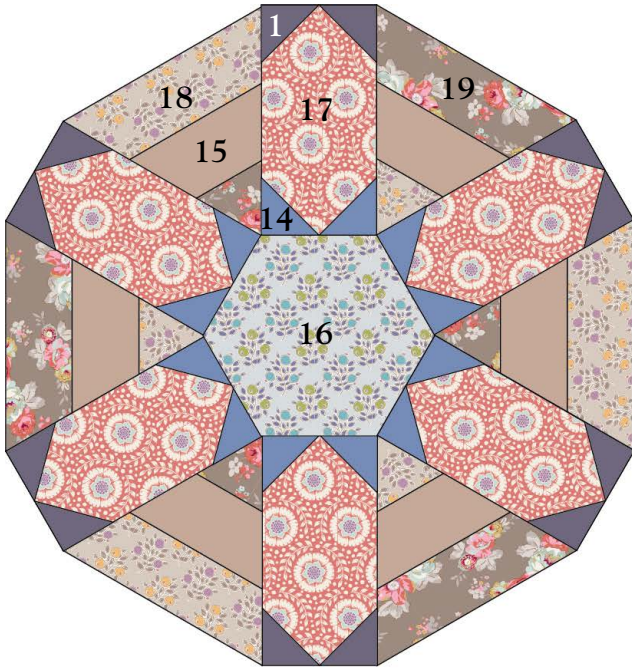
(5) hexagons, using the hexagon template

From Fabric 11, cut

(5) 3" x wof strips, from the strips, cut

(30) 3" x 5-1/2" rectangles

Cutting (continued)



Block 3 (use colors 1, 14, 15, 16, 17, 18, 19)

to make (4) full Blocks, (1) Half Block, and (1) Bottom Inset

From Fabric 14, cut

- (3) 1-3/4" x wof strips, from the strips, cut
- (56) 1-3/4" squares

From Fabric 15, 18, and 19, cut

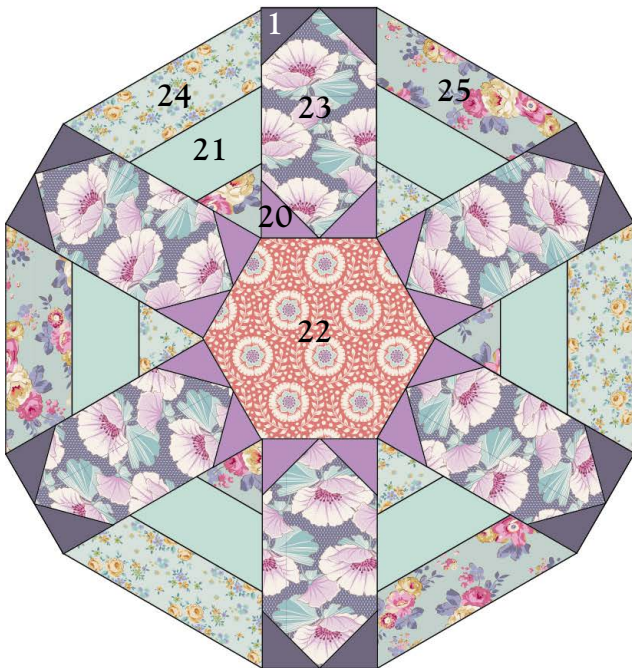
- (3) 2" x wof strips of each color,
- place Fabric 15 in the center of each set,
- sew along the long sides to make
- (3) strip sets for pieced triangles

From Fabric 16, cut

- (5) hexagons, using the hexagon template

From Fabric 17, cut

- (5) 3" x wof strips, from the strips, cut
- (30) 3" x 5-1/2" rectangles



Block 4 (use colors 1, 20, 21, 22, 23, 24, 25)

to make (4) full Blocks, (1) Half Block, and (1) Top Inset

From Fabric 20, cut

- (3) 1-3/4" x wof strips, from the strips, cut
- (56) 1-3/4" squares

From Fabric 21, 24, and 25, cut

- (3) 2" x wof strips of each color,
- place Fabric 21 in the center of each set,
- sew along the long sides to make
- (3) strip sets for pieced triangles

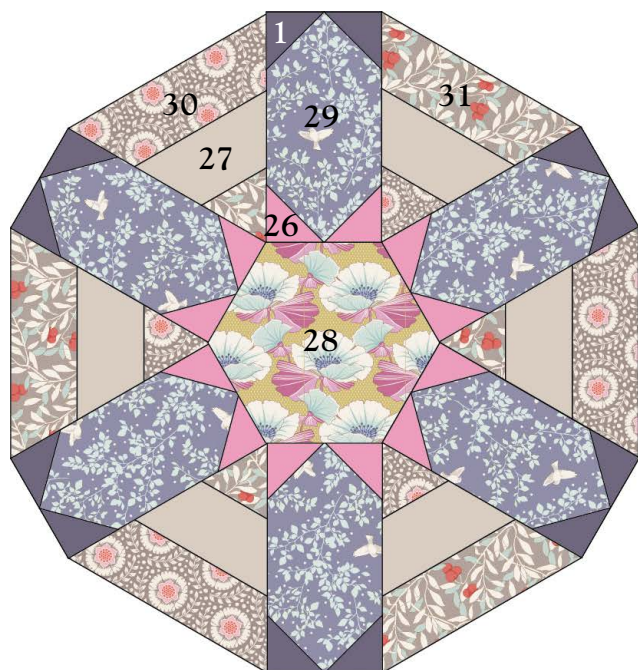
From Fabric 22, cut

- (5) hexagons, using the hexagon template

From Fabric 23, cut

- (5) 3" x wof strips, from the strips, cut
- (30) 3" x 5-1/2" rectangles

Cutting (continued)



Block 5 (use colors 1, 26, 27, 28, 29, 30, 31)
to make (4) full Blocks, (1) Half Block, (1) Corner, and (1) Top Inset

From Fabric 26, cut

- (3) 1-3/4" x wof strips, from the strips, cut
- (56) 1-3/4" squares

From Fabric 27, 30, and 31, cut

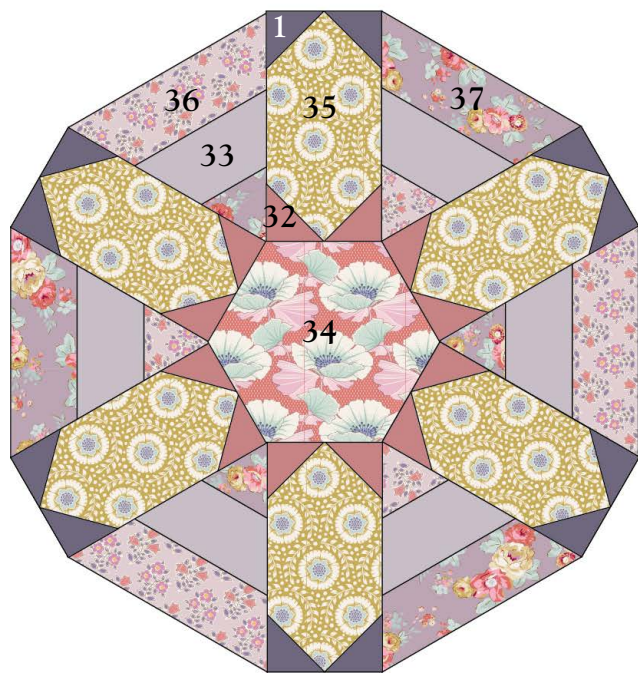
- (3) 2" x wof strips of each color,
- place Fabric 27 in the center of each set,
- sew along the long sides to make
- (3) strip sets for pieced triangles

From Fabric 28, cut

- (5) hexagons, using the hexagon template

From Fabric 29, cut

- (5) 3" x wof strips, from the strips, cut
- (30) 3" x 5-1/2" rectangles



Block 6 (use colors 1, 32, 33, 34, 35, 36, 37)
to make (4) full Blocks, (1) Half Block, and (2) Top Insets

From Fabric 32, cut

- (3) 1-3/4" x wof strips, from the strips, cut
- (56) 1-3/4" squares

From Fabric 33, 36, and 37, cut

- (3) 2" x wof strips of each color,
- place Fabric 33 in the center of each set,
- sew along the long sides to make
- (3) strip sets for pieced triangles

From Fabric 34, cut

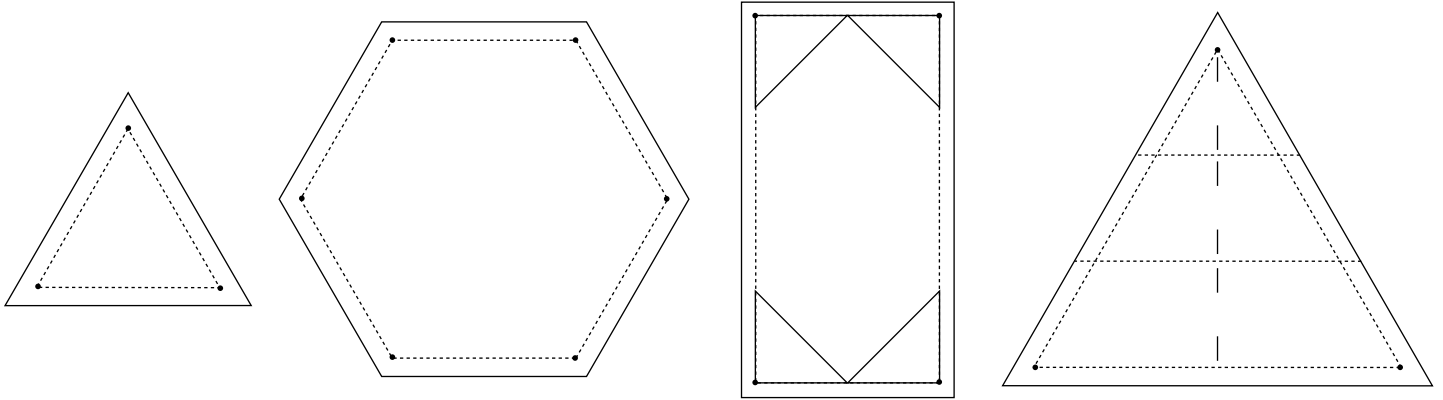
- (5) hexagons, using the hexagon template

From Fabric 35, cut

- (5) 3" x wof strips, from the strips, cut
- (30) 3" x 5-1/2" rectangles

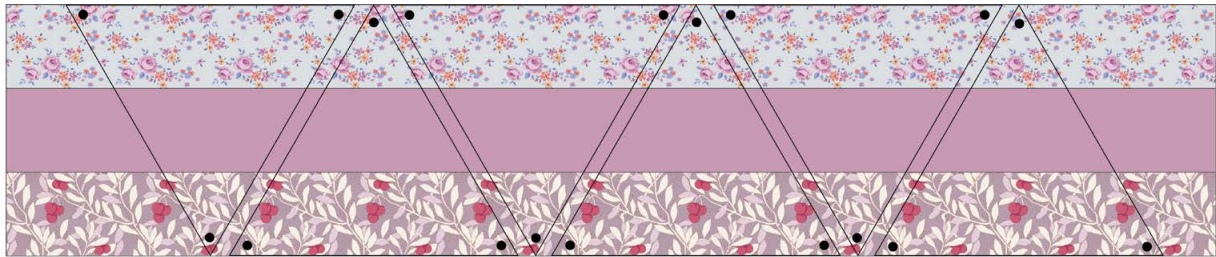
Templates

Templates are at 100% (pages 11-12). Transfer paper templates to template plastic. To mark the dots, make a hole in the plastic at each marker, large enough to allow the tip of a pencil/pen to pass through to the wrong side of fabric, and mark. These dots are used to align pieces as they are sewn, and are the starting and stopping points of the seam. (DO NOT sew through seams.) The rectangle template is only used to mark pieced units.



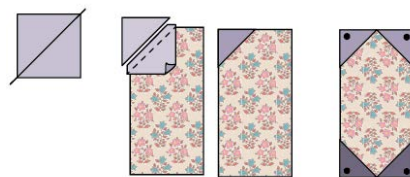
Making the Strip Sets

Each colorway has 3 fabrics used to make strip sets. Use one of each color, sew along the long side of strip, and press seams in one direction. Use the large triangle template, flipping the template back and forth on the strip set to cut pieces. Mark dots on the wrong side of fabric.



Piecing the Rectangles

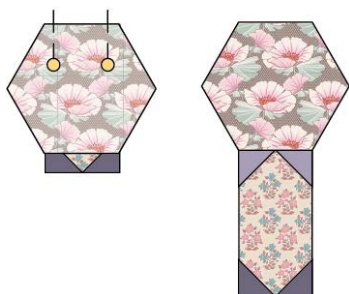
All rectangles in the blocks have Fabric 1 (Aubergine) squares sewn to each corner on one end of the rectangle. The “sew and flip” method is used to make the corner triangles. Draw a diagonal line on the back of the squares. Align a square with one corner of the rectangle, right sides together, and sew on the drawn line. Trim 1/4" (25cm) away from the sewn line. “Flip” the corner and press. (NOTE: Additional squares that are sewn to the opposite end of a rectangle are cut from each colorway. When rectangles are pieced, use the rectangle template to mark corners.)



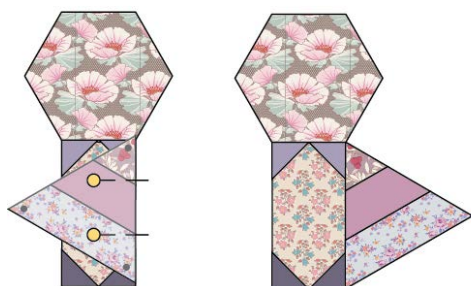
Making the Blocks

Since blocks in all colorways are made the same, instructions are given to cut and sew in only one colorway. Be sure to pay attention to the number of units to cut, since there are changes within colorways for unit amounts. Follow the cutting instructions for each colorway and follow instructions to make pieced triangles and rectangles.

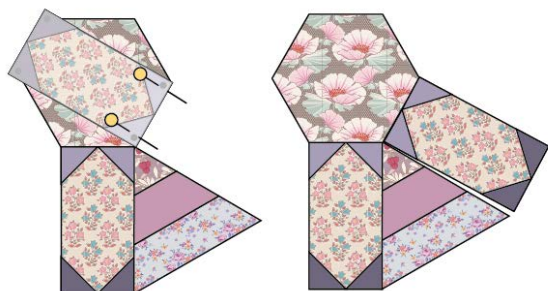
1 Align a pieced rectangle to one side of the hexagon, right sides together making sure that the Fabric 1 triangles are on the outside. Pin in place. Sew a 1/4" (25cm) seam starting and stopping on the dots. Press seam towards hexagon.



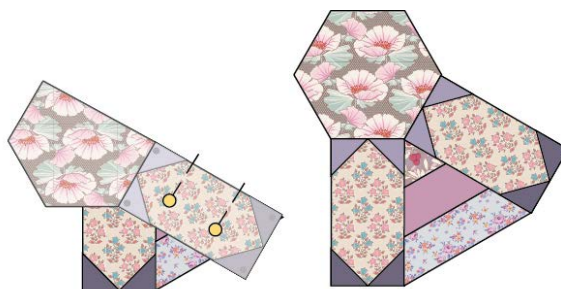
2 Align a pieced triangle along the long side of the rectangle, right sides together and matching the dots. Pin in place. Sew from dot to dot, making sure not to sew through seams. Press seam open.



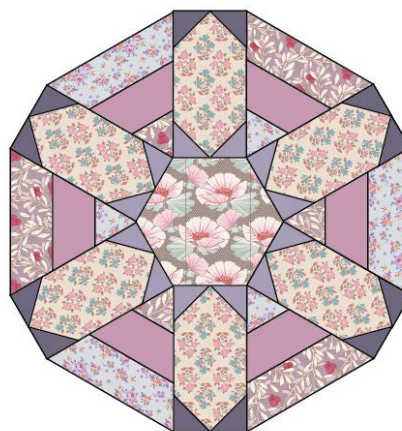
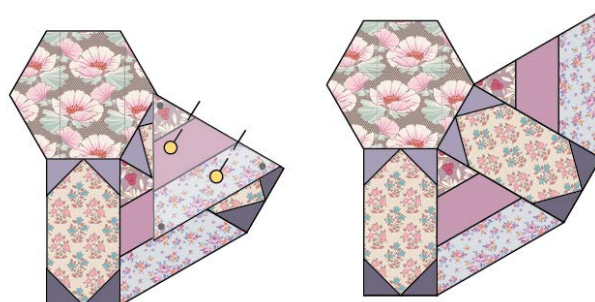
3 With right sides together, align a pieced rectangle along the next edge of the hexagon, matching dots, and making sure Fabric 1 triangles are on the outside of the rectangle. Pin and sew, starting and stopping on the dots. Press this seam towards hexagon.



4 Realign the rectangle on the pieced triangle, right sides together and matching dots. Sew from dot to dot and press this seam open.



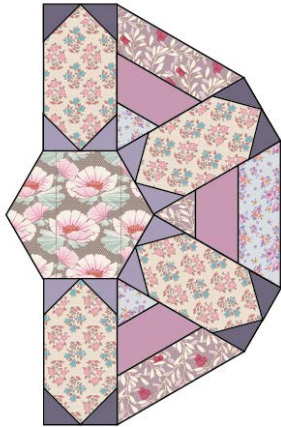
5 Continue adding pieced triangles and rectangles, and aligning dots, to complete a block. Press rectangle/hexagon seams towards hexagon. Press rectangle/triangle seams open. Make (4) blocks from each colorway.



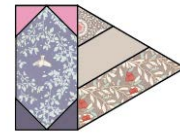
Making Side Setting Half Blocks, Corners, Top/Bottom Insets

Refer to cutting instructions and set pieces aside for these units.

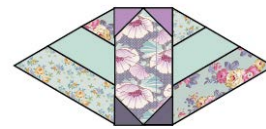
1 A half block will be made in each colorway. Using a hexagon, three pieced triangles, and 4 pieced rectangles, following steps 1-5, to make a half block. After it's sewn into a row, and the quilt top is finished, the piece will be trimmed.



2 The quilt has two pieced corners, both specific to a colorway. Sew together a pieced rectangle and a pieced triangle, as shown. Pay attention to the placement of Fabric 1 triangles.

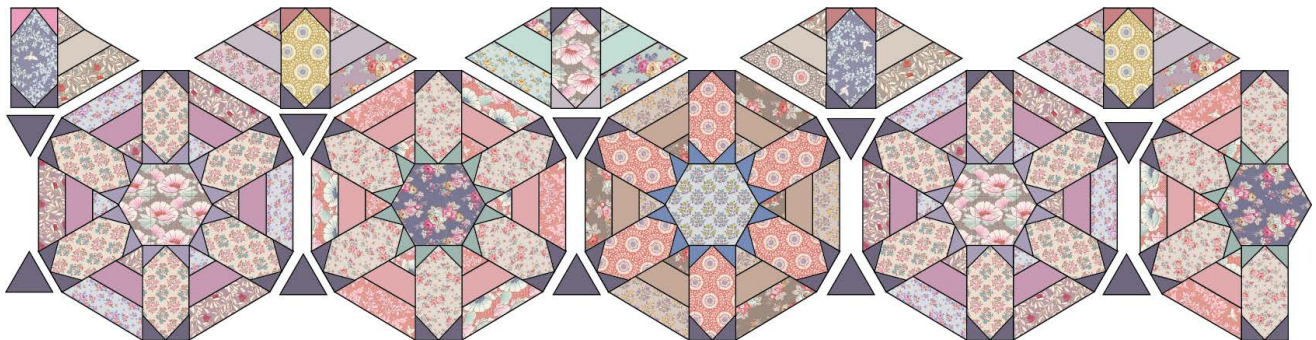


3 There are (8) top and bottom insets and they are color specific. Sew together (2) triangles and (1) pieced rectangle, paying attention to placement of Fabric 1 triangles.



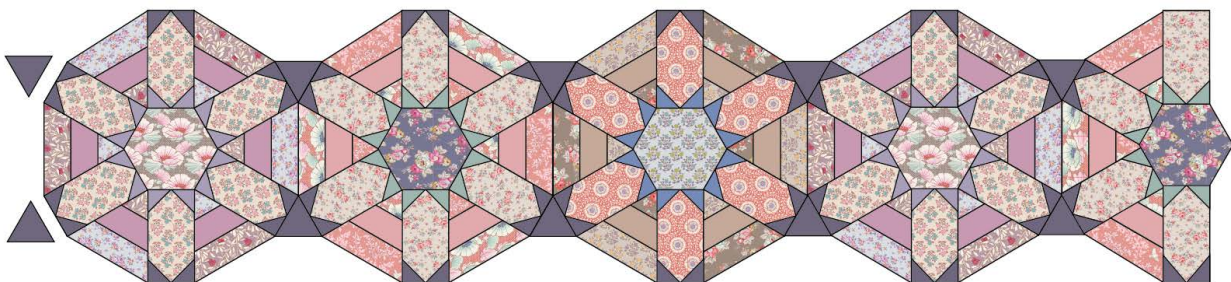
Assembling the Quilt

1 Referring to the Row 1 Assembly Diagram, lay out the blocks, half blocks, top/bottom insets and corners, as shown. (Note: half blocks, insets, and corners will be trimmed after the quilt top is finished.)

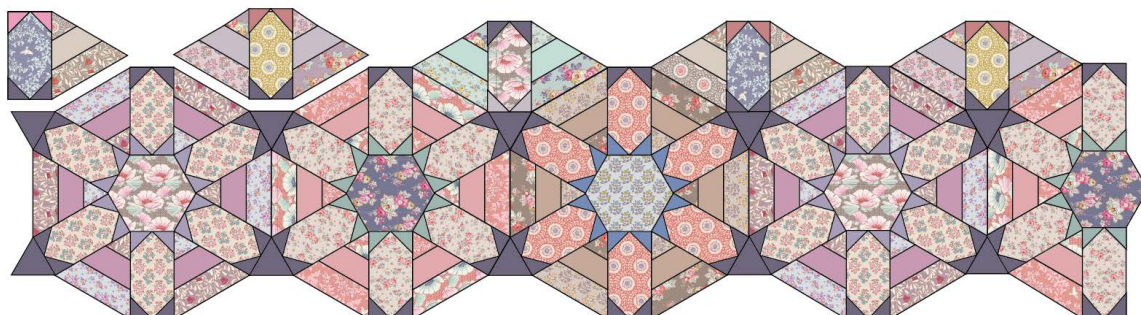


Row 1 Assembly Diagram

2 With right sides together, sew the Fabric 1 triangle units to the blocks, as shown, to complete row 1.



3 Align the corner, right sides together. Start at a dot and sew to the next one, leaving the needle in the down position. Realign the corner unit to the block and finish the seam. Align an inset piece, matching dots, making sure to keep Fabric 1 pieces aligned. Sew from first dot, to next, leaving needle in the down position and continue realigning inset to complete the seam.



4 Referring to the Quilt Top Assembly Diagram, lay out and piece the second row of the quilt and attach it to the first row. You will match the dots and continue to realign the blocks as you sew. Continue to piece and attach each row to finish the quilt top.

5 When the quilt top is complete, trim along the sides and top and bottom, as indicated below.

Block 1
Block 2
Block 3
Block 1
Half Block 2

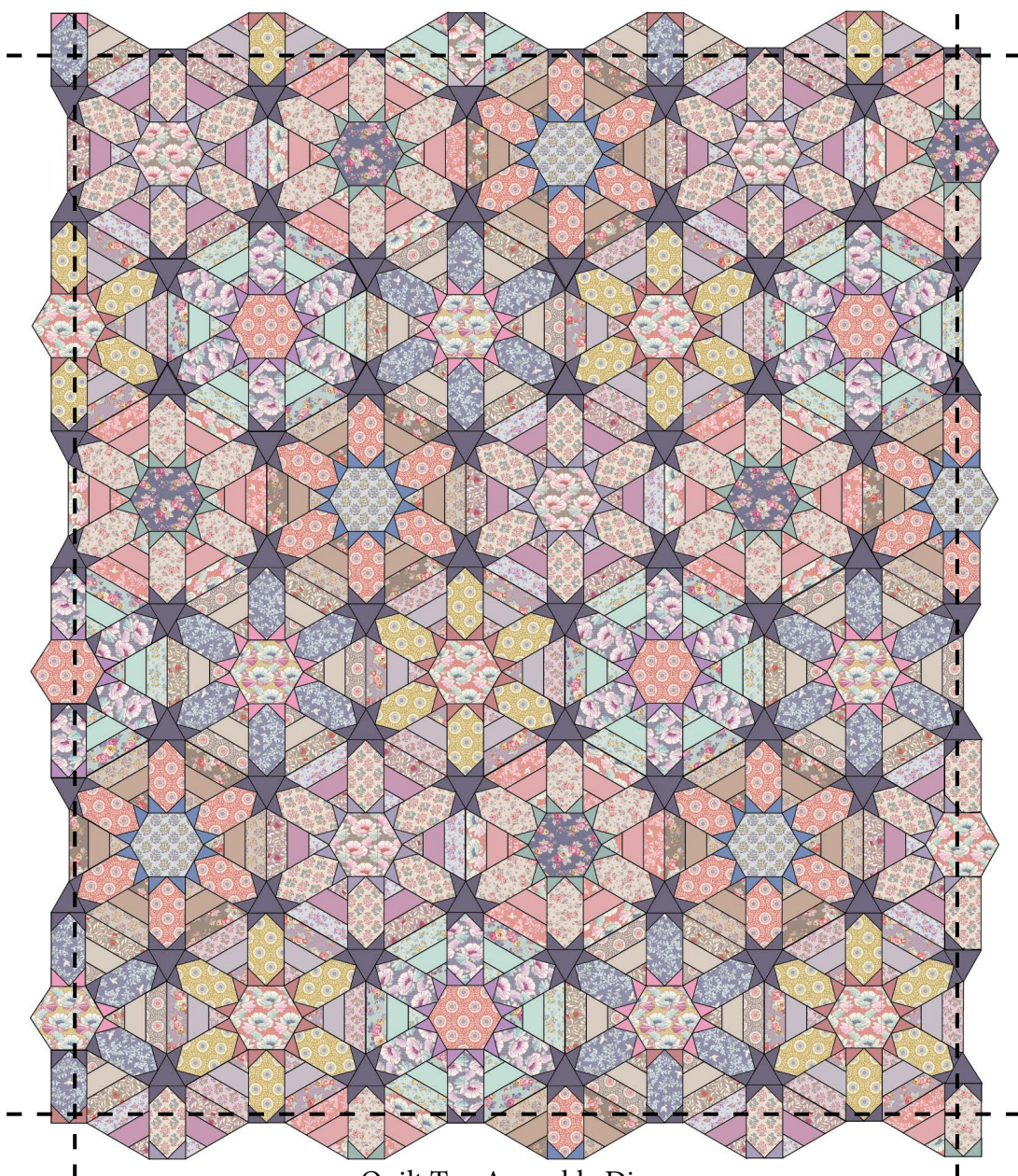
Half Block 6
Block 4
Block 5
Block 6
Block 4

Block 2
Block 3
Block 1
Block 2
Half Block 3

Half Block 4
Block 5
Block 6
Block 4
Block 5

Block 3
Block 1
Block 2
Block 3
Half Block 1

Half Block 5
Block 6
Block 4
Block 5
Block 6



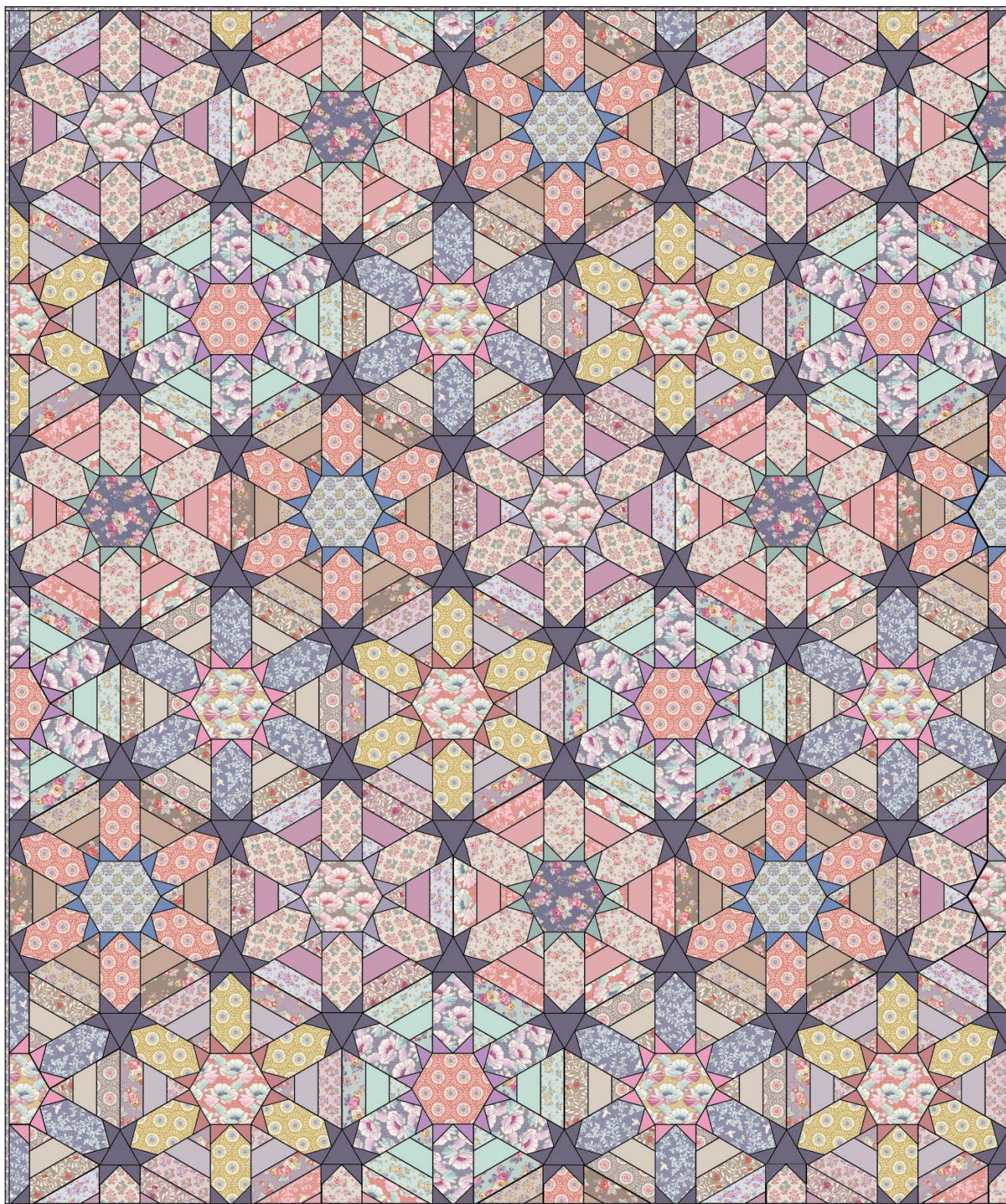
Quilt Top Assembly Diagram

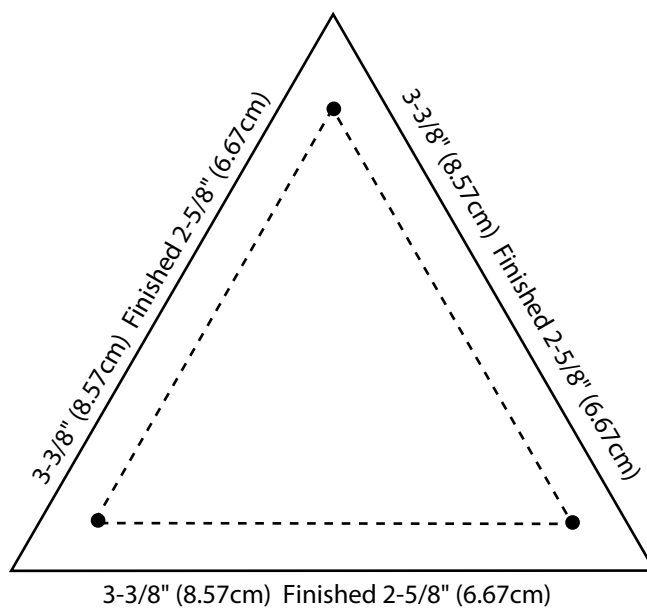
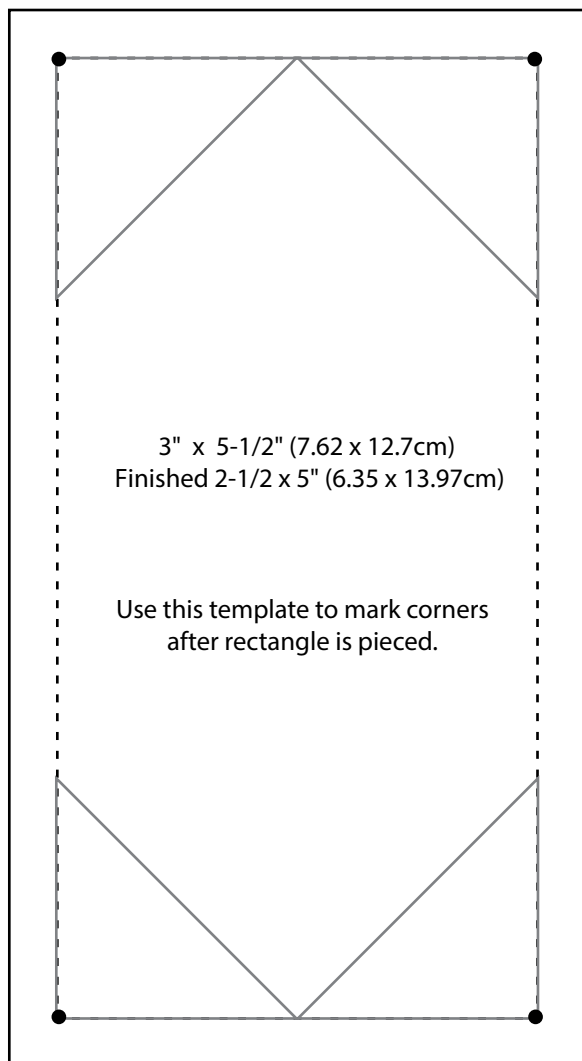
Finishing the Quilt

1 Layer the backing, wadding, and quilt top, making sure all layers are smooth. Use your favorite method to fix the layers.

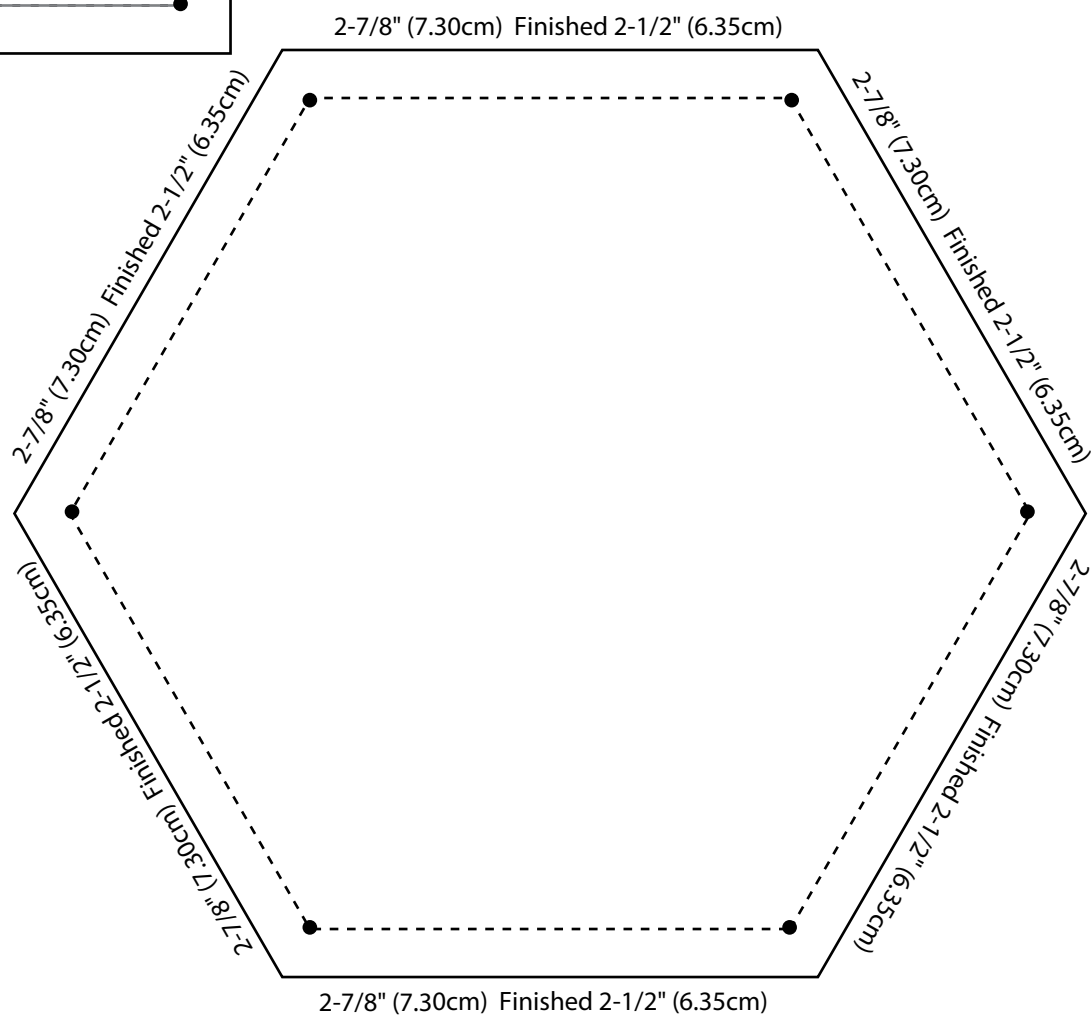
2 Quilt as desired.

3 From the Cherrybush Slate binding fabric, cut 2-1/2" (6.35cm) strips. Sew the strips along the short side, on the bias, to make a continuous binding strip. Press the strip wrong sides together and bind the quilt, using your favorite method.

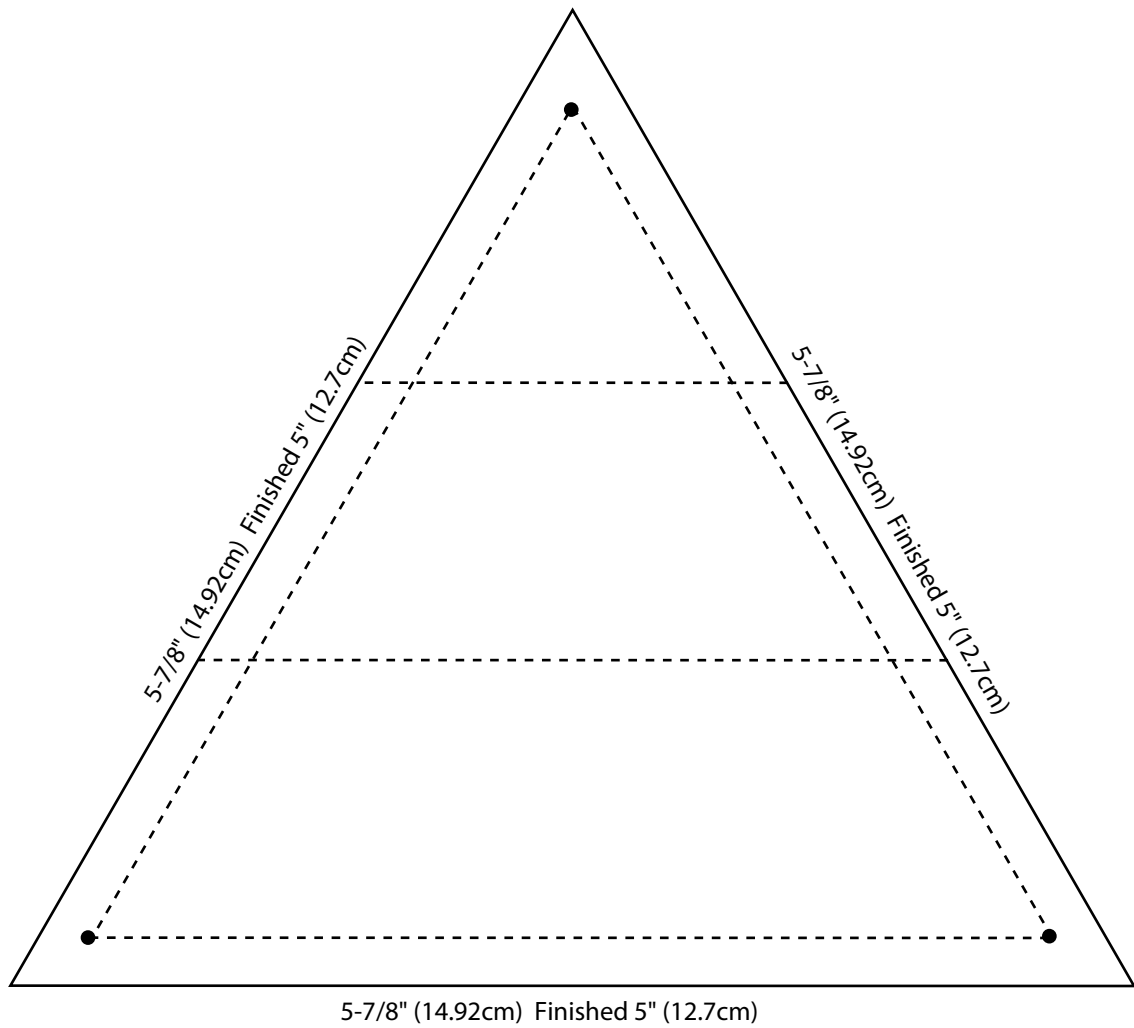


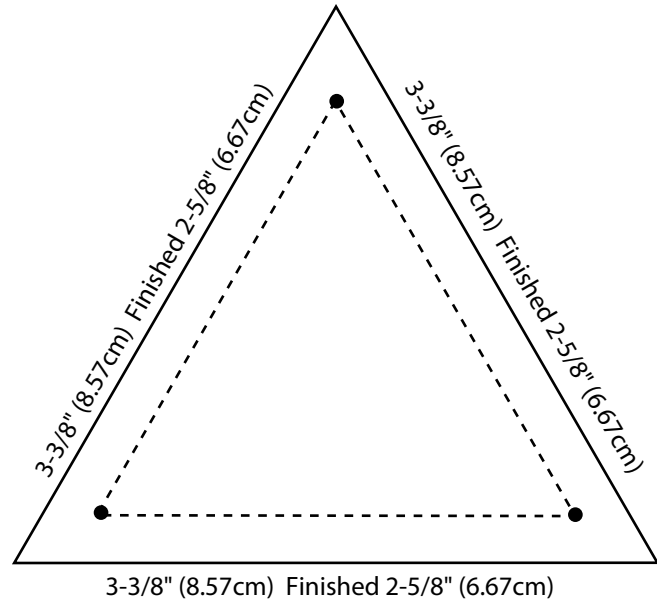
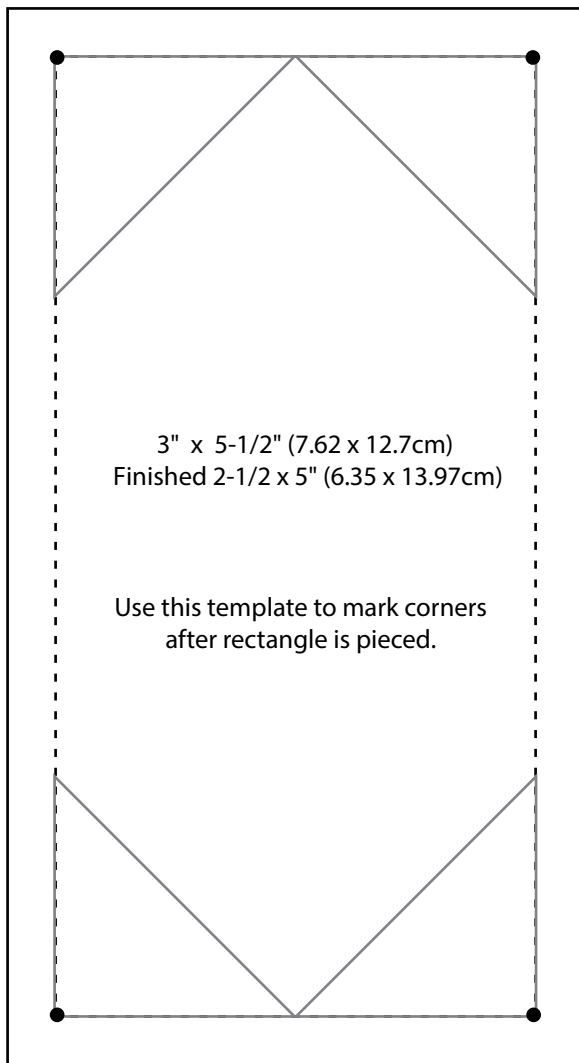


Use this page for printing in letter size A4. For printing in US letter, use page 14 and 15.

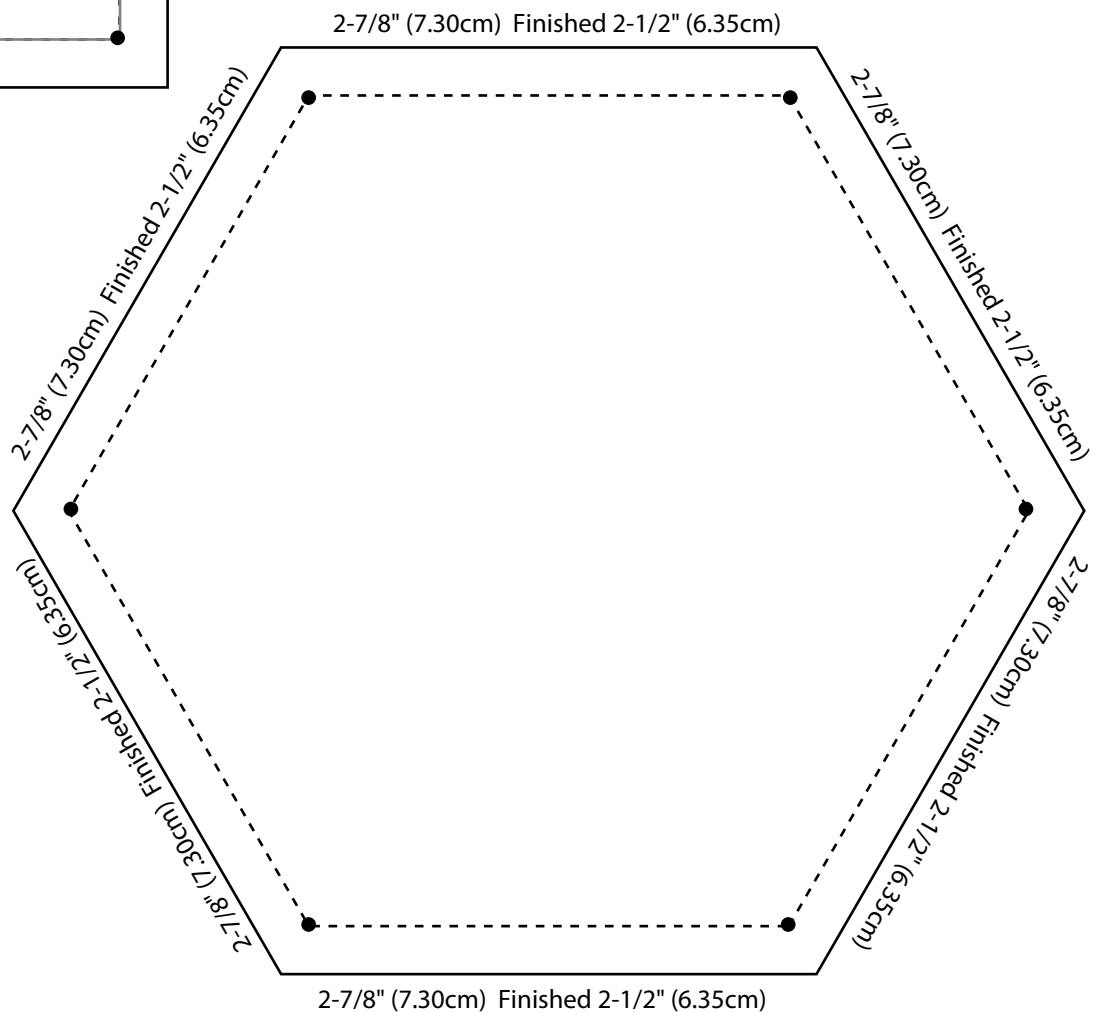


Use this page for printing in letter size A4.
For printing in US letter, use page 14 and 15.





Use this page for printing in paper size US letter.
For printing in page size A4, use page 12 and 13



Use this page for printing in paper size US letter.
For printing in page size A4, use page 12 and 13.

