

Tilda Friends

Fria Doll

Height: 20,5 in (52 cm)



Tilda®

Fia Doll

Height: 20½in (52cm)

Materials needed

- Fabric 1: 55cm x 50cm (21¾in x 19¾in) – Tilda doll fabric biscuit (140001)
- Fabric 2: 55cm x 50cm (21¾in x 19¾in) – Lilit blue (100246)
- Fabric 3: 36cm x 30cm (14in x 11¾in) – Flowerleaf blue (100242)
- Ball of Tilda blond wool yarn for hair (140052)
- Embroidery yarn in red for decorating clothes, approximately 50cm (20in)
- Fibrefill approx. 170G

We also recommend using the following:

- Sewing machine
- Matching thread and a sewing needle for hand sewing
- Larger needle for yarn
- Flower stick or chopstick for turning and stuffing
- Thick paper for copying patterns
- Black hobby paint and a small metal-headed pin for eyes
- Soft pink lipstick, rouge or stamp pad, and a dry brush for rosy cheeks

Making the Doll

1 Refer to the bullet points below on making the project before you start. Copy all the pattern pieces onto thick paper and cut out the shapes. The fabrics used are shown in **Fig A**.

- Read all the project instructions through before you start.
- Use thick paper for copying patterns.
- The outer line on a pattern is the sewing line (generally, no seam allowances are included).
- When sewing the seams, reduce your stitch length to 1.5mm–1.6mm.
- Unless otherwise instructed, sew on the outer line of the pattern and then cut out the shapes after sewing, cutting ⅛in–¼in (3mm–6mm) outside the sewn line.
- To get a good shape, cut snips in the seam allowance where seams curve tightly inwards.
- Stuff well, using a stick to fill small areas.
- Sew up openings with matching thread and small slipstitches.

Fig A



2 Body: Using Fabric 1 (doll fabric), cut a piece approximately 9½in (24cm) wide x 10in (25.4cm) high. Trace and cut out two body parts. Fold each body part right sides together so that you can easily sew the opening at the top together (see **Fig B**). This will create the shoulders. From Fabric 1 cut two pieces for the head, each approximately 3½in (9cm) wide x 4in (10.2cm) high. Open out one of the body parts and place it right side down on top of a head piece. Straighten out the top edge of the body piece and sew it onto the head piece, as in **Fig C**. Repeat with the other body part and head piece.

3 Fold the head pieces up and press the seam allowance apart. Place the two body parts right sides together and make sure the seams are aligned. Trace the head so that it continues the traced lines on the body, as shown in **Fig D**. Sew around as shown.

Fig B

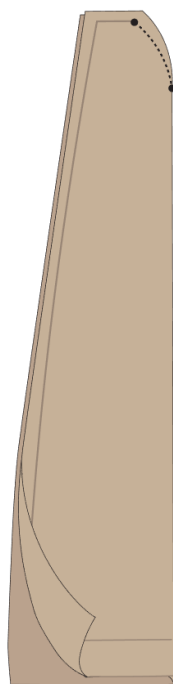


Fig C

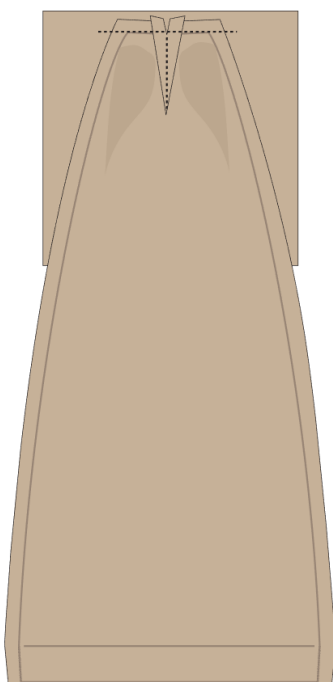
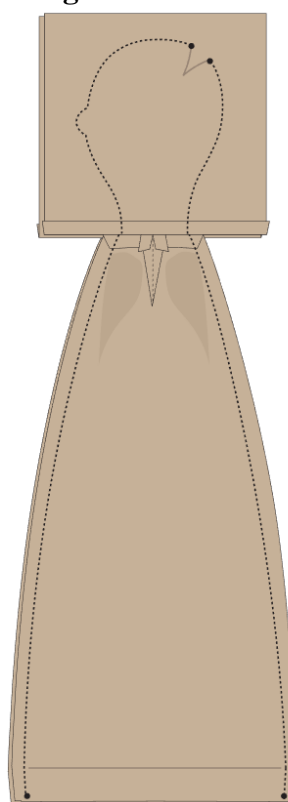


Fig D



4 Cut out the body and then cut notches in the seam allowance caught in the seam on each side of the neck, as well as where the seam around the body curves inwards. Turn the body through to the right side and fold in the extra seam allowance around the opening before pressing the body.

5 From Fabric 1, cut a 12in (30.5cm) square for the legs, a 9½in (24cm) square for the arms and a 4in (10.2cm) square for the hair buns. Fold each piece of fabric double. Trace two arms, two legs and two hair buns on the fabric pieces and mark the openings. Sew around and cut out all the pieces.

6 Turn all of the parts through to the right side, fold in the seam allowance by the openings on the arms and hair buns (leave the seam allowance on the legs open and flat) and then press. When turning thin arms and legs it is helpful to separate the two fabric layers by using your thumb and forefinger and then place the blunt end of a flower stick or similar tool against the end of the piece (see **Fig E**). Use the stick to push the fabric through and up out of the turning opening (**Fig F**). Now pull the rest through the opening and use the stick to push through the top part.

Fig E

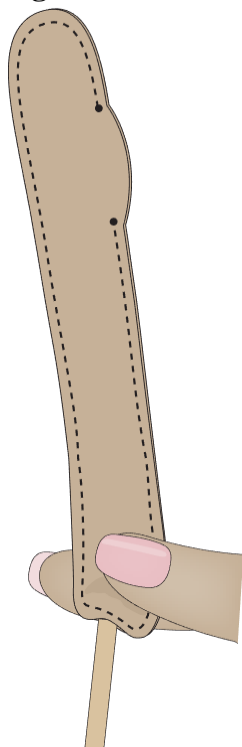
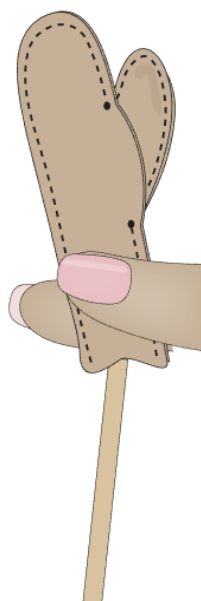
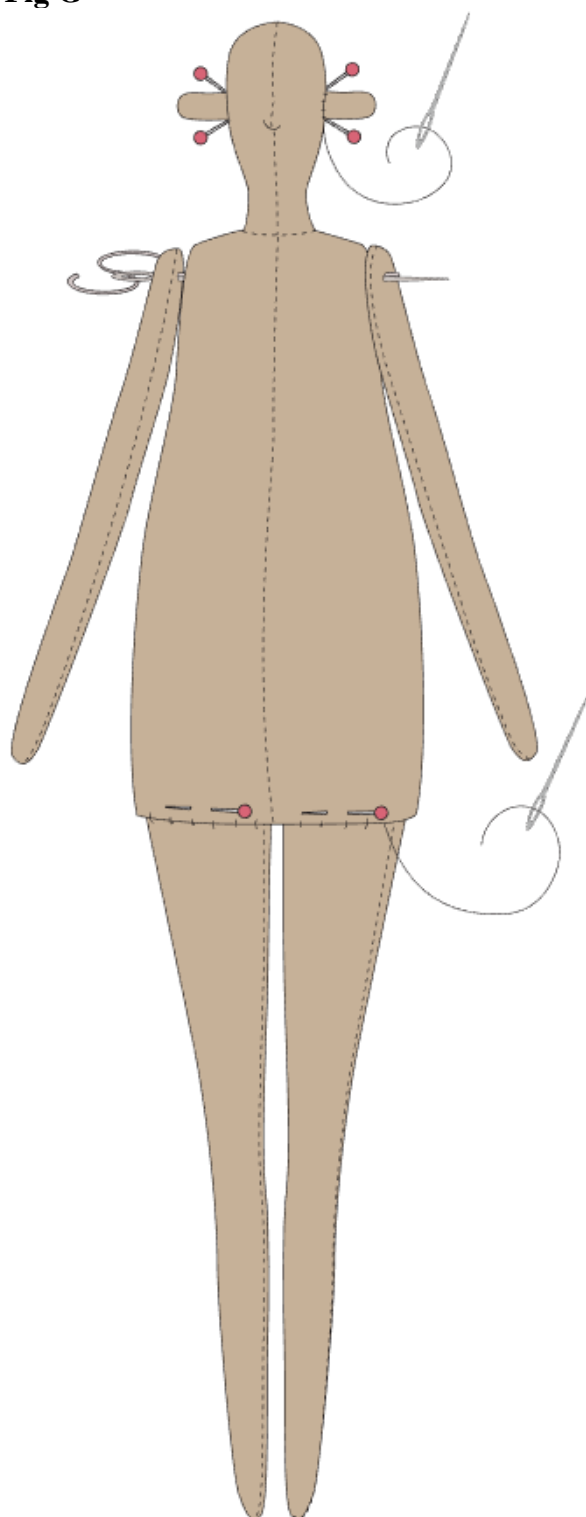


Fig F



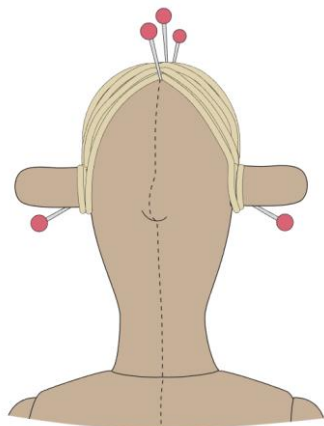
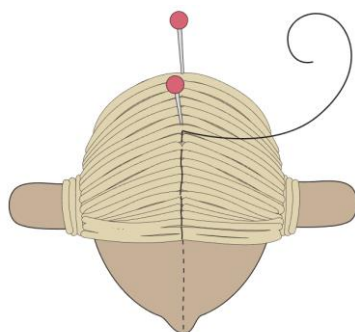
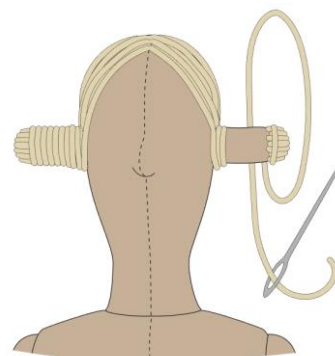
7 Stuff the body, arms and legs and sew up the openings on the arms. Sew the arms onto the body using a large needle and a doubled sewing thread (or embroidery yarn) to sew from one arm, right through the body, through the second arm and then back again. Repeat this, two or three times, to secure the arms tightly to the body (**Fig G**). This will enable them to move easily.

8 Place the extra seam allowance of the legs inside the body opening and pin. Now sew the opening shut while at the same time attaching the legs, as shown in **Fig G**. Pin the opening on the hair buns against each side of the head, adjusting their position until you are happy with them. Now hand sew them into place.

Fig G

9 Hair: Place pins along the seam in the middle of the head, from the forehead and backwards towards the neck. Place one pin behind the hair buns on each side. Start winding the yarn back and forth between the hair buns, dividing it between the pins on the top of the head and winding it around the hair buns a few times, as shown in **Fig H**. When covering the back of the head, continue winding back and forth between the pins behind the buns. The aim is to cover the scalp with just the necessary amount of yarn. When it is covered, secure the hair in place by hand sewing a seam along the middle of the head (**Fig I**). Sew stitches back and forth

through the head to secure the hair around the pin on each side behind the buns. Remove the pins. Thread some hair yarn on a large needle and sew a few stitches to cover the tip of the bun, then wind the yarn around the rest of the bun until it is covered, as shown in **Fig J**. Repeat with the other bun.

Fig H**Fig I****Fig J**

10 Face: Stamp eyes onto the face using a metal pin with a small head, dipped in black hobby paint. When the eyes are dry, create rosy cheeks using lipstick or rouge and a dry brush.

Making the Dress

11 Main dress: All parts of the dress are made from Fabric 2. Cut a piece of Fabric 2 approximately 15½in (39.4cm) wide x 13in (33cm) high. On this fabric piece, trace and cut out the two dress shapes, with an added seam allowance all round. In the centre opening of the front piece, cut notches at an angle towards the corners, and then fold in two pleats towards the middle area, as marked on the pattern and shown in **Fig K**. Sew a small line across to secure the pleats.

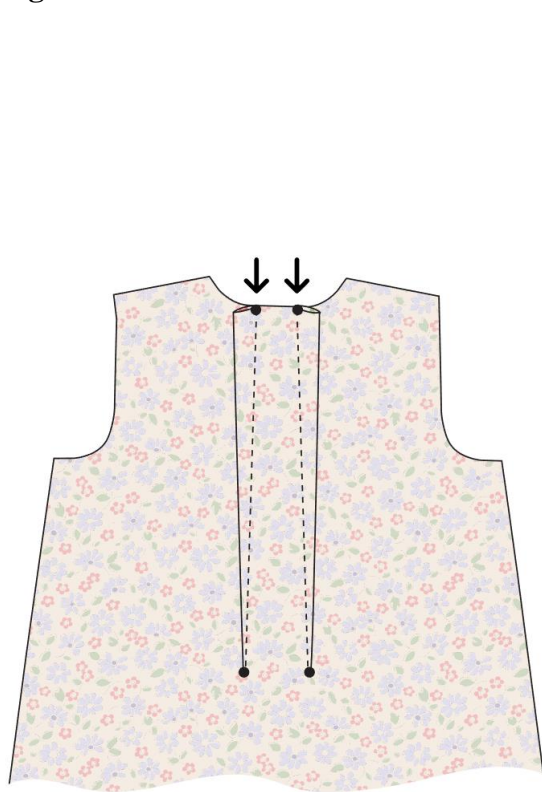
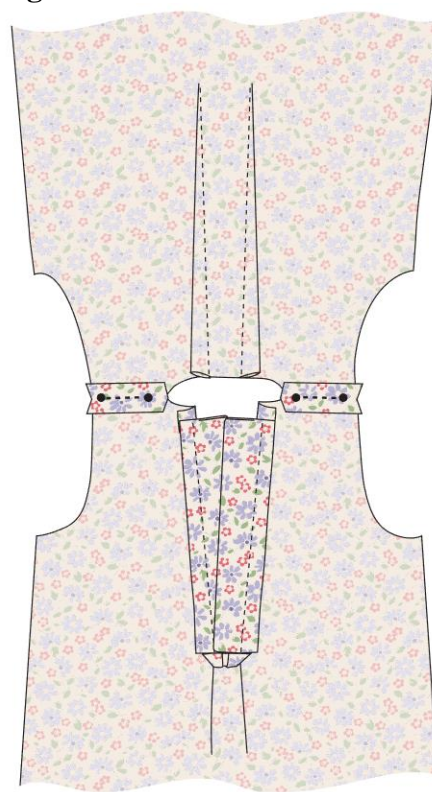
Fig K

12 For the button edging on the dress, cut two pieces of fabric each 1¼in x 3½in (3.2cm x 9.2cm) – this size includes a ¼in (6mm) seam allowance all round. On each piece, fold in and press the seam allowance along one short side and then fold each piece right sides together

along the length and press. Place one on each side of the dress opening, as shown in **Fig L**, starting where the seam allowance on the top of the dress ends (so about 1/4in/6mm down from the top). The open sides on the button edging should be flush with the edges on the opening. Sew the button edging in place, as shown on the diagram. Fold the edges the opposite way and iron the seam allowance against the back of the dress. Let the left button edging overlap the right one, as shown in **Fig M**, and secure in place with a few stitches at the bottom.

Fig L**Fig M**

13 On the back of the dress, make the two longer pleats by folding the fabric as shown in **Fig N** and then machine sew them. Now place the two dress pieces right sides together and sew them together at the shoulders, making sure you do not sew in the seam allowance (**Fig O**).

Fig N**Fig O**

14 Collar and sleeves: From Fabric 2 cut a piece approximately 5¾in (14.6cm) wide x 17in (43.2cm) high. Press it in half, right sides together, so it's about 8½in (21.6cm) high. Trace and then sew two sleeves and one collar, as shown in **Fig P**. The inner curve on the collar and the straight sides on the sleeves should be left open. Continue the seam on the sleeves at an angle on the seam allowance on each side, as shown in the diagram and in the pattern – this is just a trick to avoid the end of the sleeves unravelling, and the tip created by the angle shows where the seam allowance starts. Turn the pieces through to the right side and cut notches in the seam allowances, as shown in **Fig Q**.

Fig P

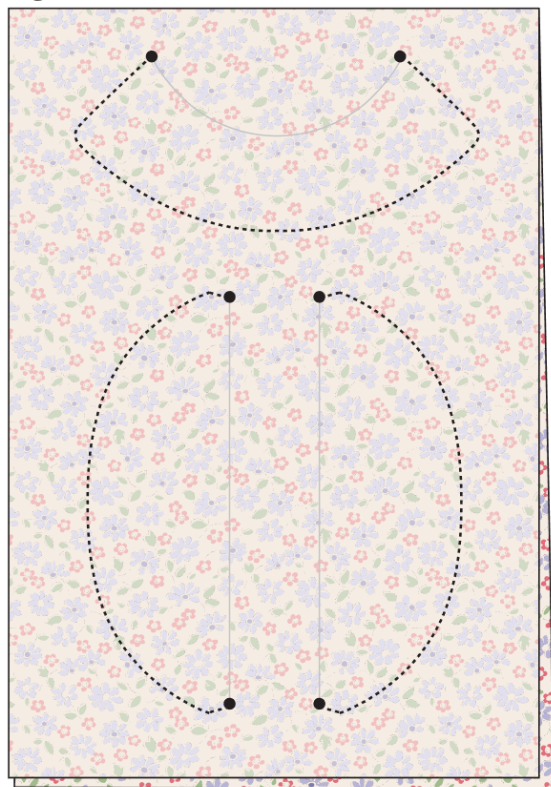
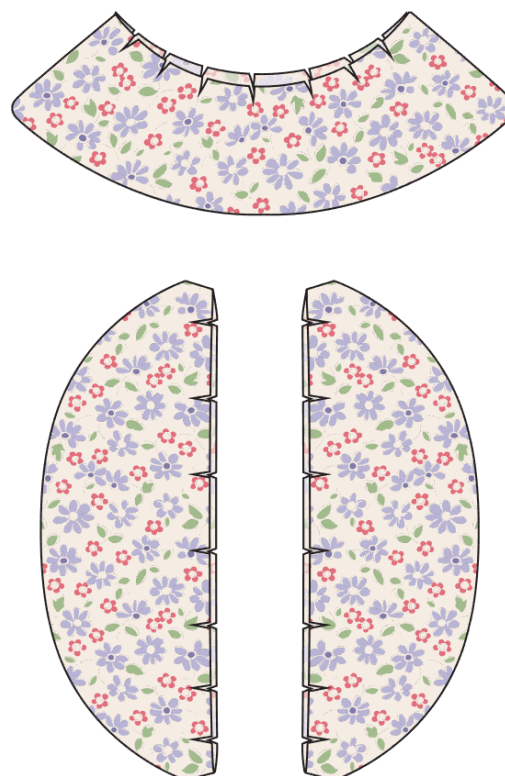
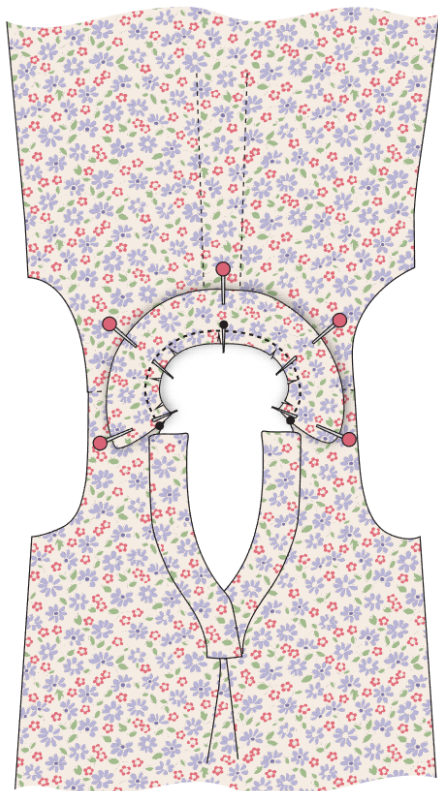


Fig Q

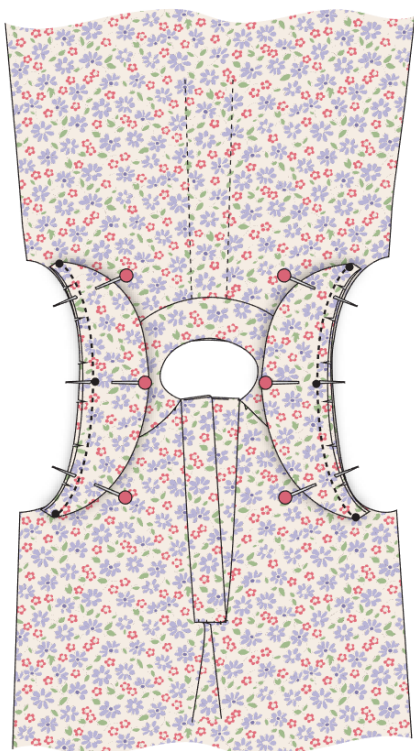


15 To sew the collar, find the middle of the collar and pin it on the right side of the back of the dress, as in **Fig R**. Pin each side of the collar on each side of the opening in the front of the dress, as shown. Add more pins to fit the collar edge around the opening on the dress and cut more notches, if necessary, to tweak it in place. Machine sew the collar onto the dress.

16 Remove the pins and fold and press the seam allowance on the collar towards the wrong side of the dress, so that the collar is lifted up. You can attach some of the seam allowance to the wrong side of the dress with invisible stitches if you like, to avoid it popping up.

Fig R

17 To sew the sleeves, find the middle of a sleeve and pin this point in the middle of the shoulder (on top of the seam). Now pin each side in place, as shown in **Fig S**. There is supposed be a small gap between the sleeve and the sleeve opening on each side, so the sleeve will not cover the whole opening.

Fig S

18 Fold the dress right sides together and sew along each side of the dress. Fold in and press the extra seam allowance along the skirt's bottom edge and then sew it in place. Turn the dress through to the right side and press.

19 To gather up the edges of the sleeves, tack (baste) along the edge of the sleeve and pull up the thread to create gathers (**Fig T**). Don't pull too tightly as the opening should still be big enough to give the dress a relaxed look and allow you to dress and undress the doll.

Fig T



20 Use the red embroidery yarn to sew three French knots along the button edging, wrapping the thread twice around the needle for each knot. These French knots will suggest buttons (**Fig U**). Alternatively, you could use small red pearls or tiny buttons. If you want to be able to remove the dress easily, you can use snap fastenings or Velcro as a closing mechanism.

Fig U



21 Dressing the doll: This dress is designed to fit all of the animals in the Tilda Friends range, as well as the Fia Doll. The different characters have different sized necks. On most of the animals the top “button” of the dress needs to be open, but on the Fia doll the dress might look prettier if the button edges overlap more. Adjust the button edging and fix it with a few stitches to keep it in place (**Fig V**). If you have added fastenings, then stitches are not needed.

Fig V



Making the Bag

22 From Fabric 3, cut a 1½in x 12½in (4cm x 32cm) strip across the fabric width, for the handle (a seam allowance is included in this measurement). Fold in and press the long sides wrong sides together, so they meet in the middle, as in **Fig W**. Now fold the strip double, so that the handle is about ¾in (1cm) wide, press and then sew along the open long side (**Fig X**).

23 Fold the remaining piece of Fabric 3 in half, right sides together, and use the bag pattern to trace the shape. Sew around the marked shape, leaving an opening in the seam where marked on the pattern. Cut out with a seam allowance all round. Turn the bag through to the right

side, press and sew the opening closed. Push one half of the bag into the other half, press again and then sew along the pressed edge to secure (**Fig Y**).

24 Pin one end of the handle on each side of the bag, on the inside, so that the handle is about 11¾in (30cm) long. Sew into place. To finish, arrange the bag on the doll, across the shoulder (see photo). A fun little detail we have added is a mini Tilda Bon Voyage collection catalogue (on the kit packaging). Cut out the catalogue and fold it double. Add a little filling to the bottom of the bag and put the catalogue inside.

Fig W

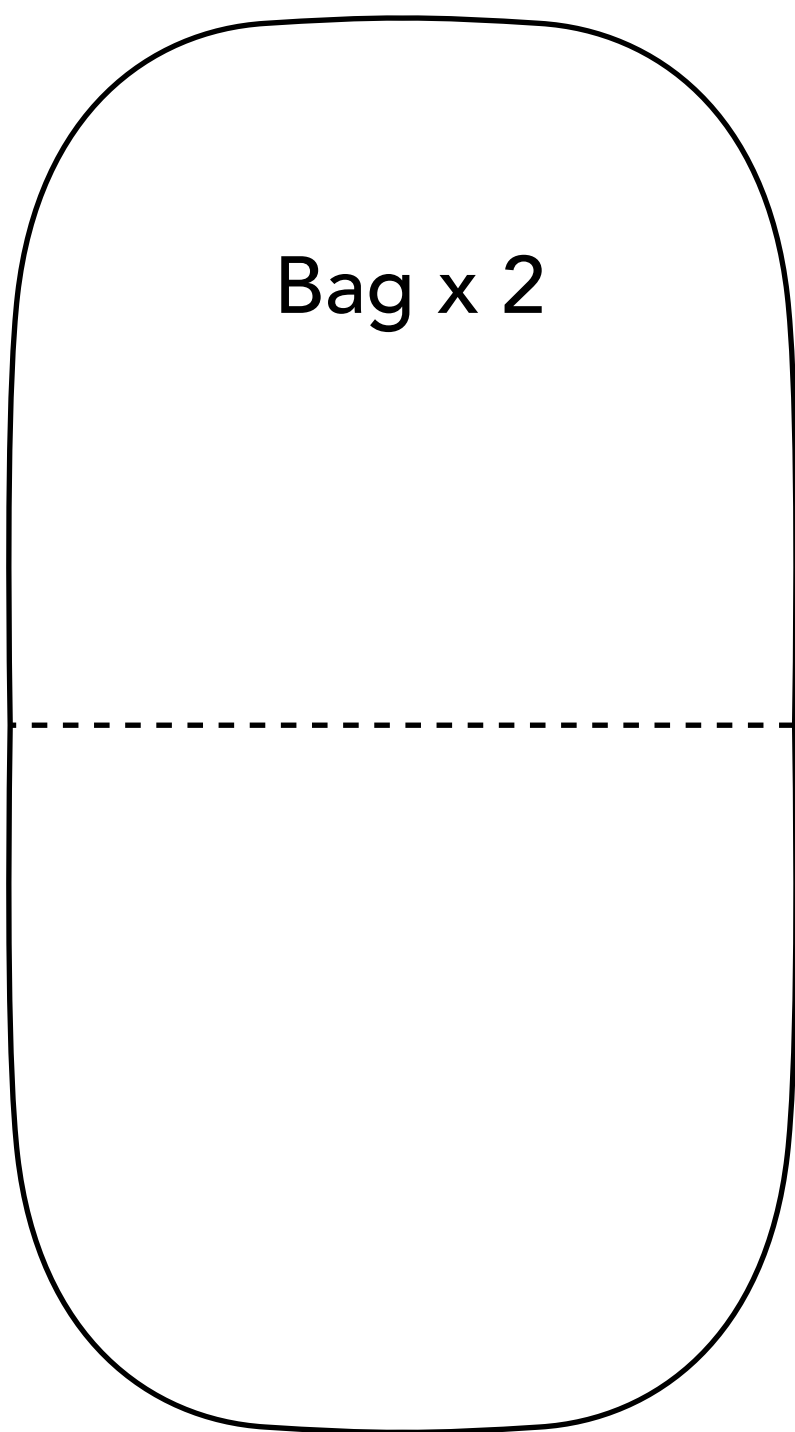


Fig X

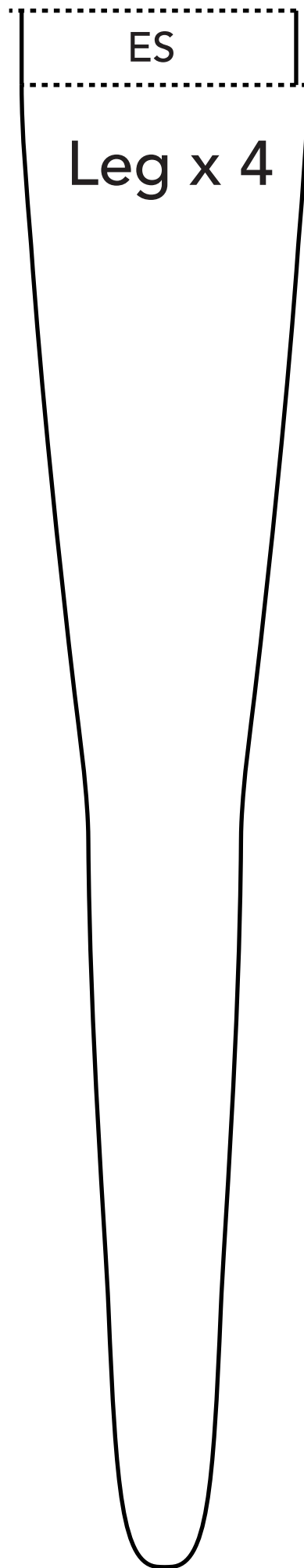


Fig Y



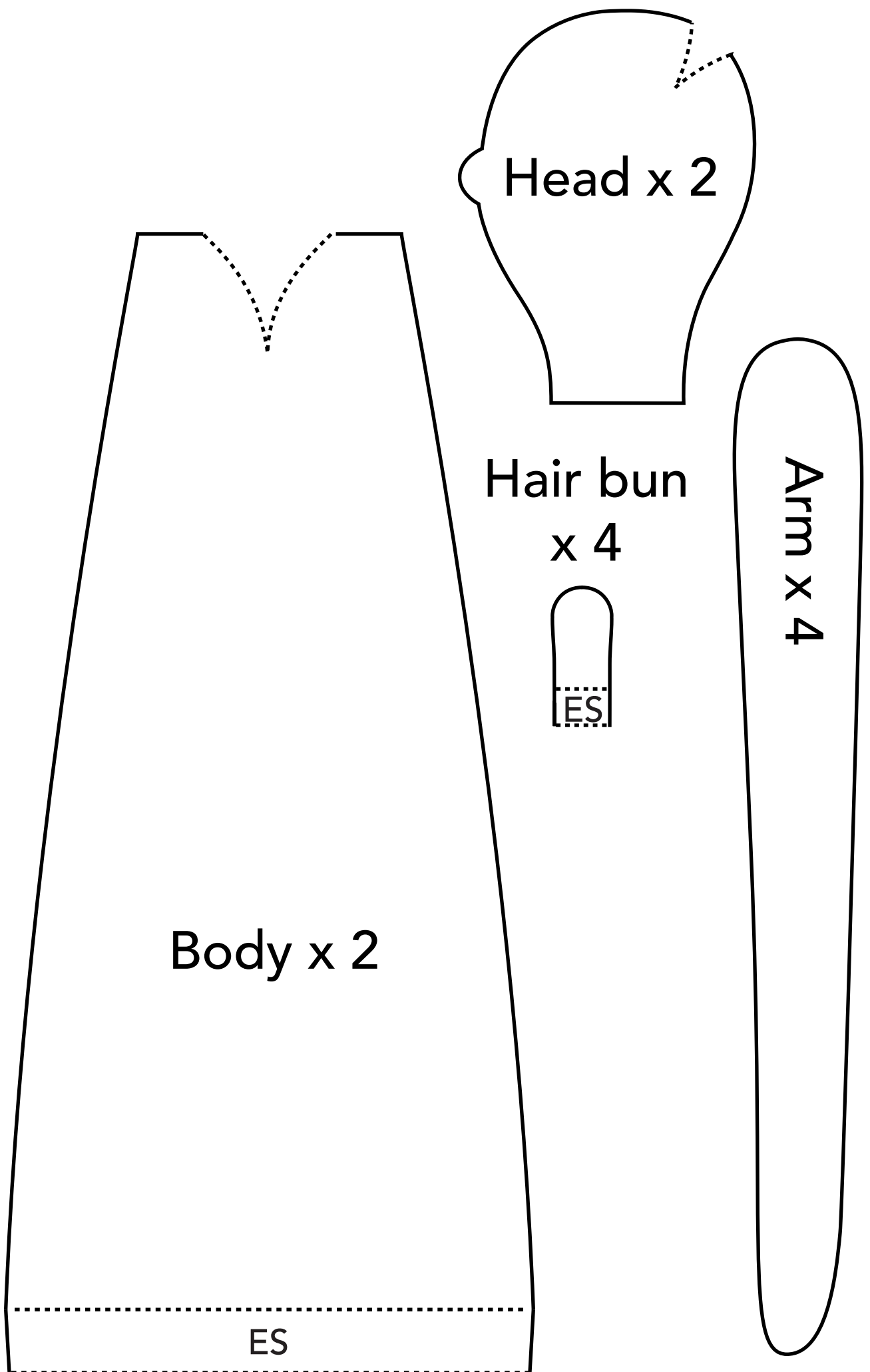


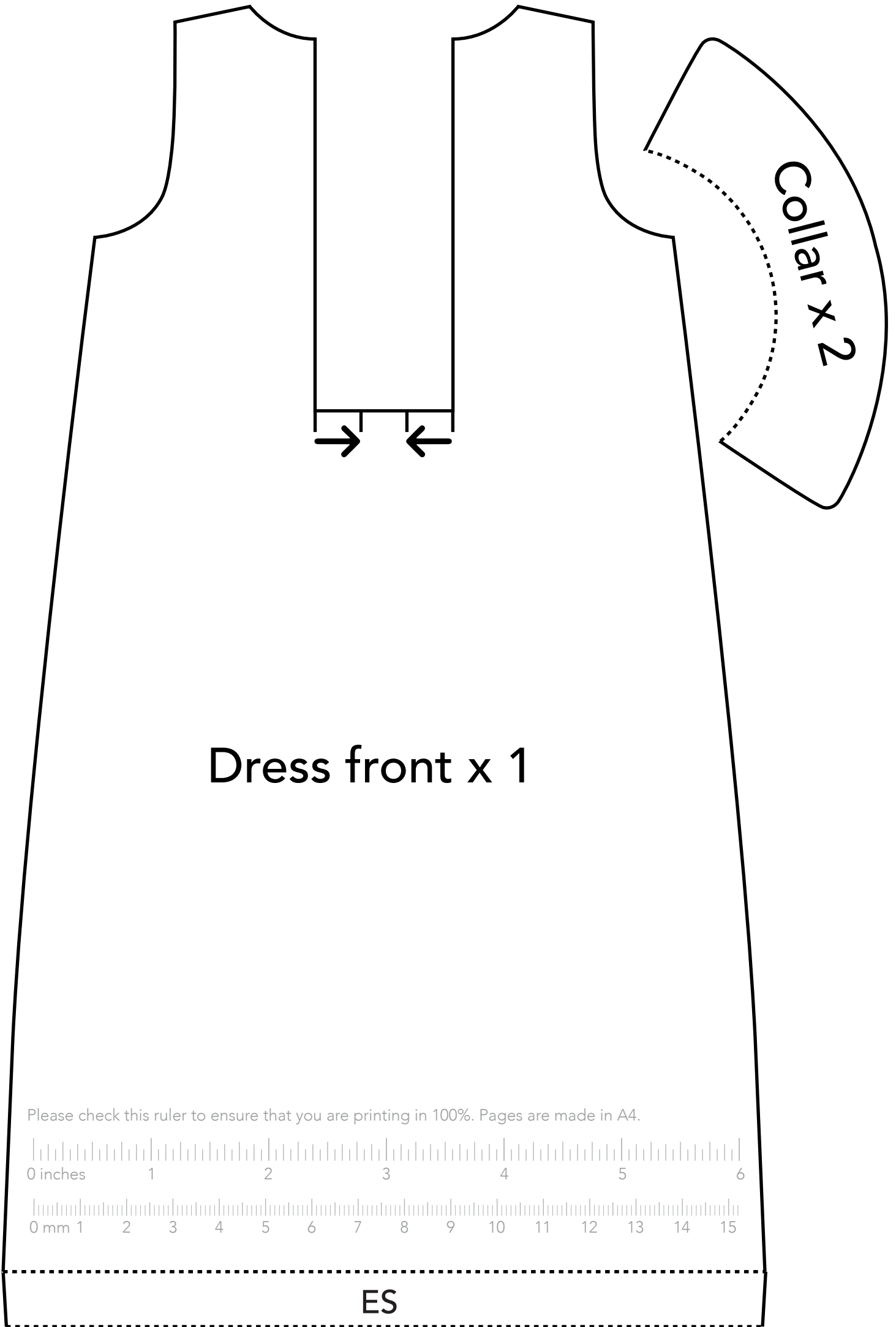
Bag x 2



ES

Leg x 4





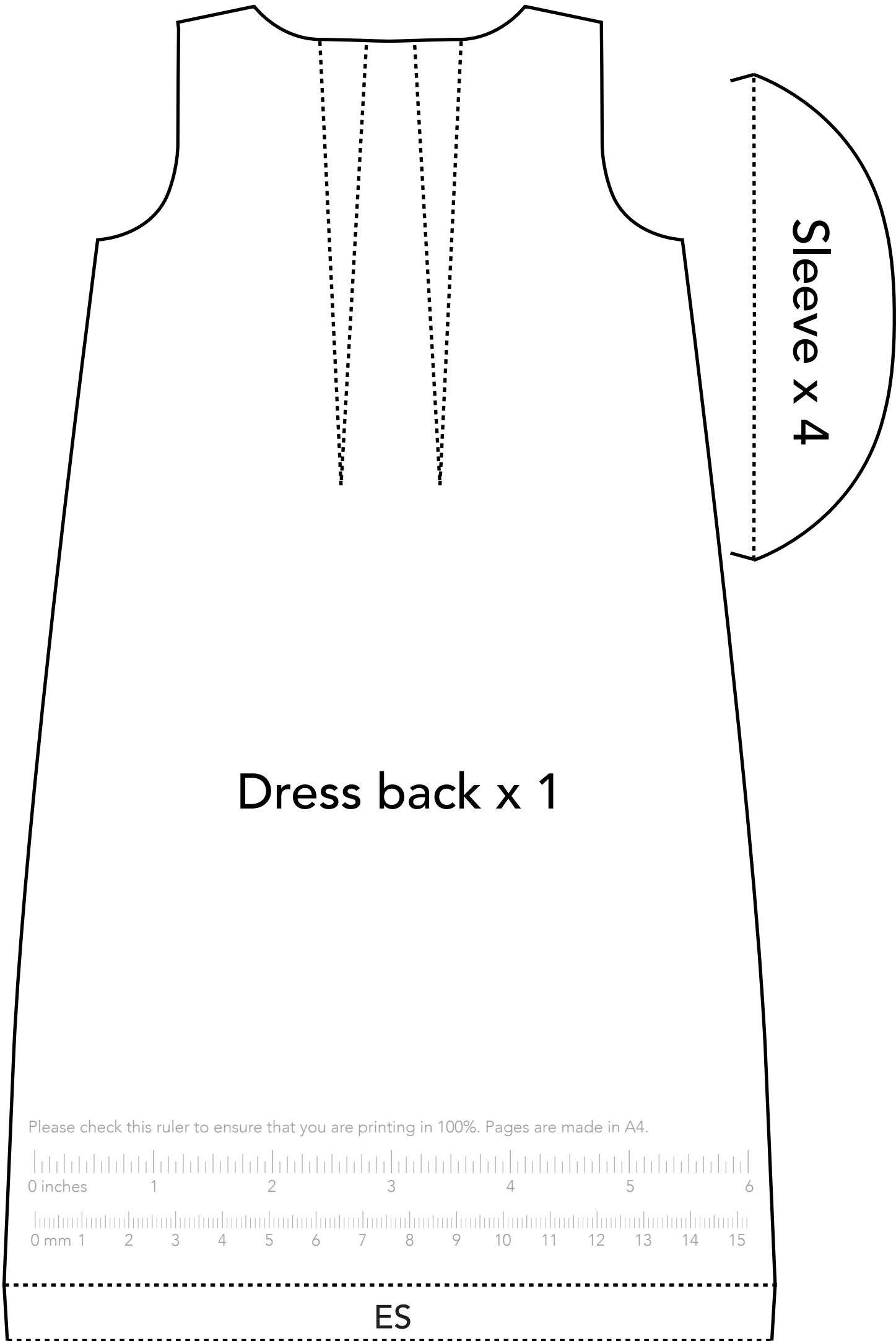
Dress front x 1

Collar x 2

Please check this ruler to ensure that you are printing in 100%. Pages are made in A4.



ES



Sleeve x 4

Dress back x 1

Please check this ruler to ensure that you are printing in 100%. Pages are made in A4.



ES