

# Tilda Friends



Giraffe

# Tilda Friends Giraffe

Height: 47cm (18½in)

For the Giraffe we have used Tilda Doll Fabric in Biscuit (140001).

## You will need

- Tilda doll fabric 55cm x 60cm (21¾in x 23⅝in) for the body
- Embroidery yarn in similar colour to skin fabric, for sewing on arms and legs (optional)
- Fiberfill approx. 200g

We also recommend using the following:

- Sewing machine
- Matching thread and a sewing needle for hand sewing
- Larger needle for embroidery yarn
- Flower stick or chopstick for turning and stuffing
- Thick paper for copying patterns
- Black hobby paint and a small metal-headed pin for eyes
- Soft pink lipstick, rouge or stamp pad, and a dry brush for rosy cheeks

## Making the Giraffe

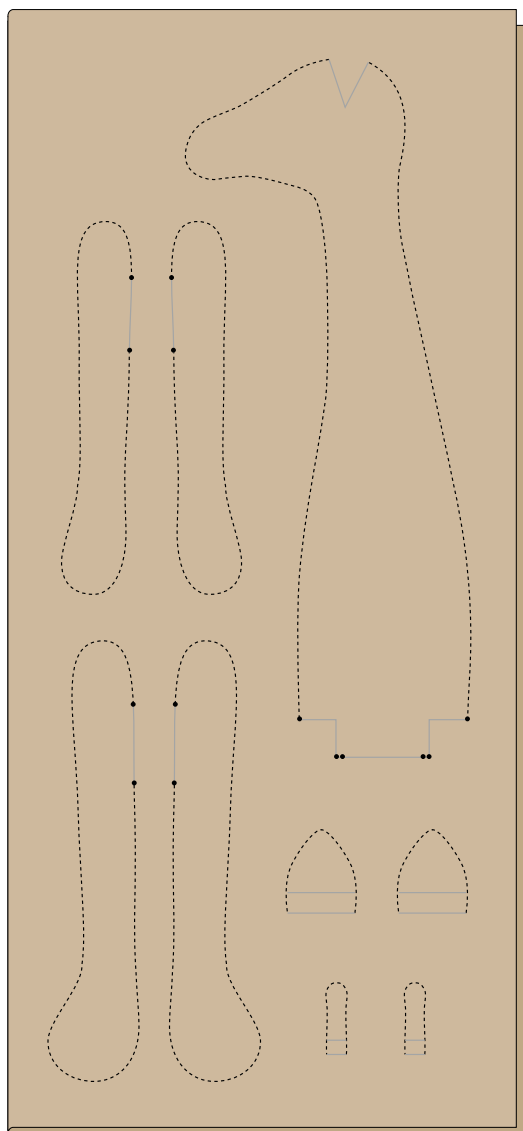
**1** Refer to the bullet points below on making the project and read all the project instructions through before you start.

- We suggest copying or gluing all the pattern pieces onto thick paper and then cutting out the shapes.
- When sewing the seams, reduce your stitch length to 1.5mm–1.6mm.
- Unless otherwise instructed, sew on the outer line of the pattern. Generally, no seam allowances are included in the patterns, except for areas marked with ES (extra seam allowance).
- Cut out the shapes after sewing, cutting ⅛in–¼in (3mm–6mm) outside the sewn line.
- To get a good shape, cut snips in the seam allowance where seams curve tightly inwards.
- Stuff well, using a stick to fill small areas.
- Sew up openings with matching thread and small slipstitches.

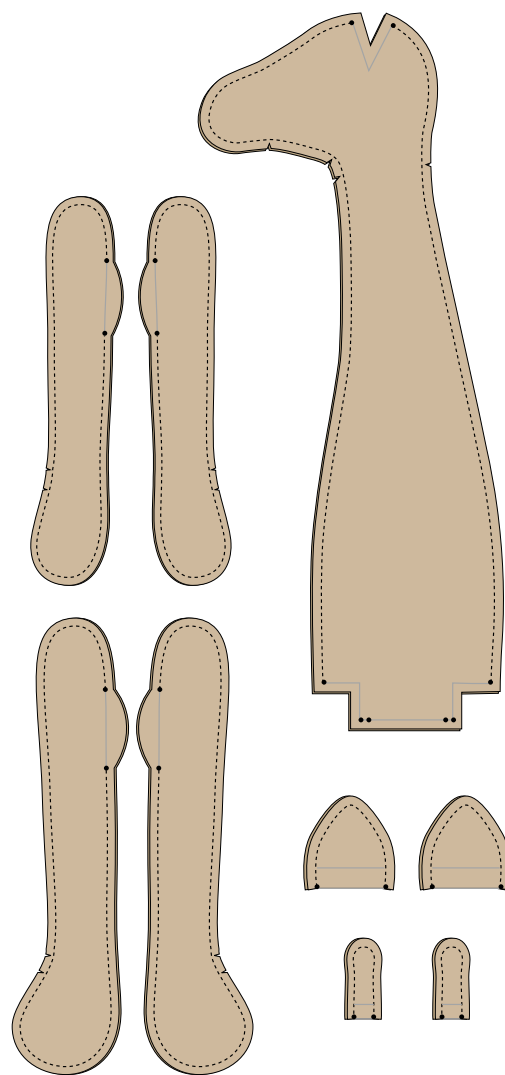
**2** Fold the piece of doll fabric right sides together, so it's about 11in x 23⅝in (27.5cm x 60cm), and press. Using the patterns, draw one body, two legs, two arms, two ears and two horns. Mark the openings and then sew around the pieces. Note that the opening in the head and at the bottom of the body should be open, except for two small seams on each side at the bottom, which are only there to keep the fabric together (see **Fig A**).

**3** Cut out the pieces with an approximate ⅛in (4mm) seam allowance, but add extra seam allowances by the openings where noted on the patterns (see **Fig B**). Cut notches where seams curve inwards.

**Fig A**

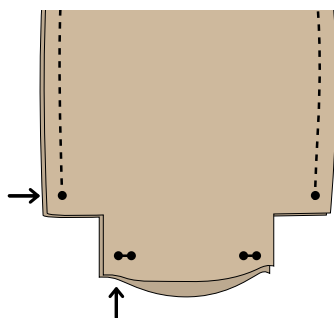


**Fig B**

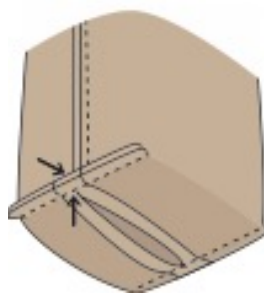


**4** Fold the fabric on each side of the opening at the bottom of the body, placing the seams over and under each other, as shown by the arrows in **Fig C**, and then sew together, as shown in **Fig D**.

**Fig C**

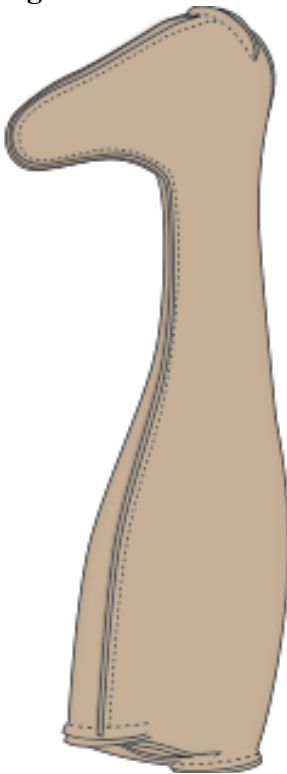


**Fig D**



**5** Fold up the opening on the top of the head, placing the seams on top of each other, and then sew up the opening, as shown in **Fig E**.

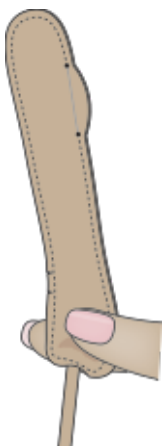
**Fig E**



**6** Turn all of the parts through to the right side, fold in the seam allowance by the openings and the extra seam allowance (ES) on the ears and horns, and then press.

When turning thin arms and legs it is helpful to separate the two fabric layers by using your thumb and forefinger and then place the blunt end of a flower stick or similar tool against the end of the foot/hand (see **Fig F**). Use the stick to push the fabric through the leg/arm and up through and out of the turning opening (**Fig G**). Now pull the rest through the opening and use the stick to push through the top part.

**Fig F**

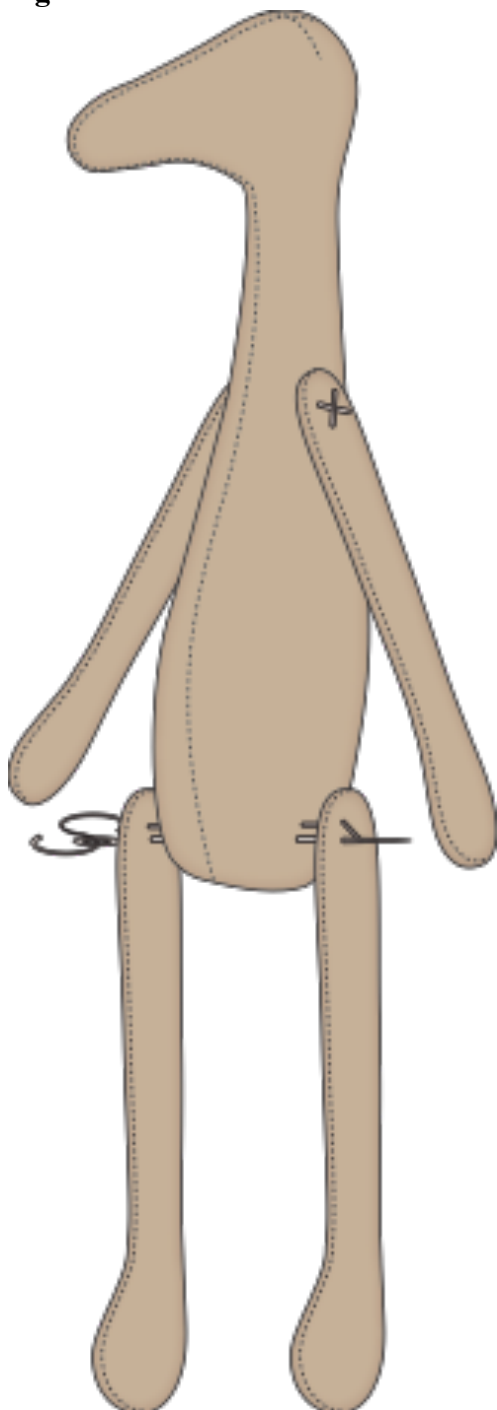


**Fig G**



**7** Stuff the body, arms and legs and sew up the openings. To sew on the limbs, use a large needle and a doubled sewing thread (or embroidery yarn) to sew from one arm, right through the body, through the second arm and then back again. Repeat this, two or three times, to secure the arms tightly to the body (**Fig H**). This will enable them to move easily. Sew on the legs the same way.

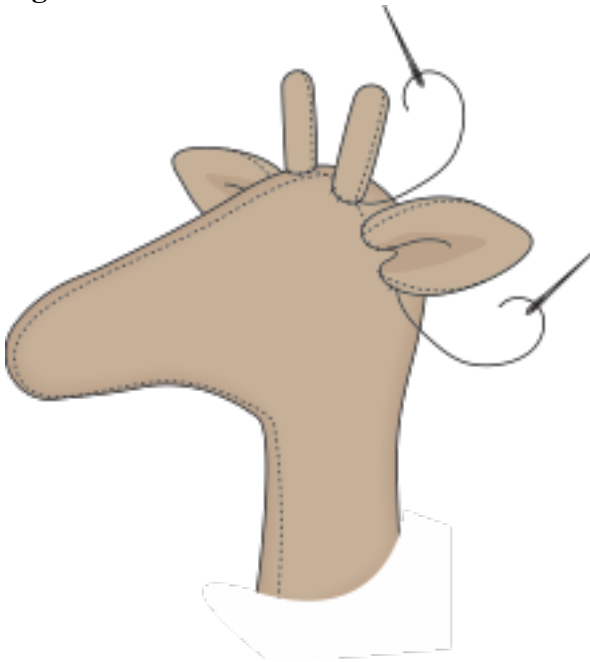
**Fig H**

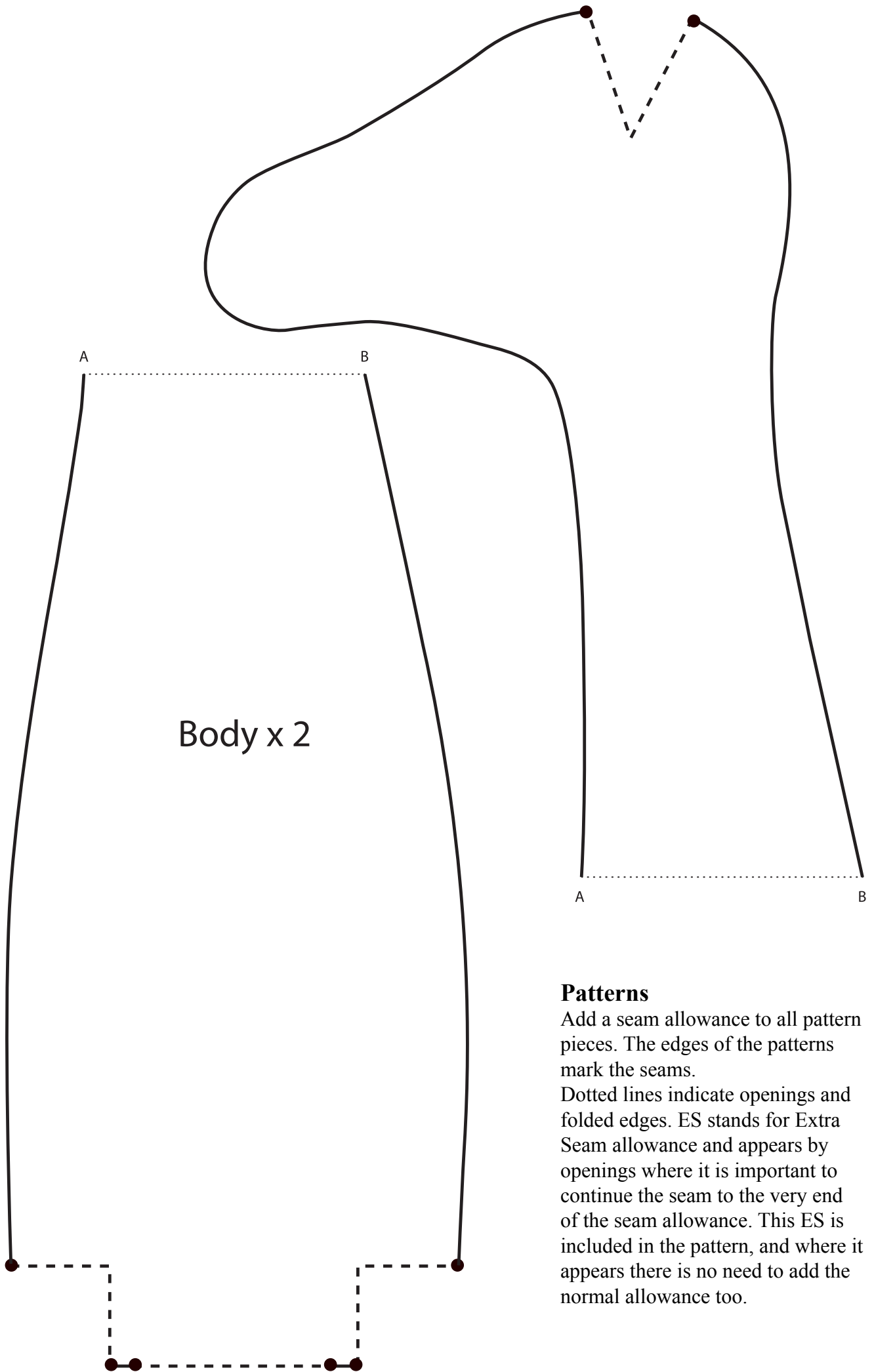


**8** Using pins, position the horns on top of the head and then sew these in place. Fill the ears with a tiny amount of stuffing to create a little volume, and then fold the ears slightly and attach them with pins on each side of the head before sewing them in place (**Fig I**).

Stamp eyes onto the face using a metal pin with a small head, dipped in black hobby paint. When the eyes are dry, create rosy cheeks using lipstick or rouge and a dry brush.

**Fig I**



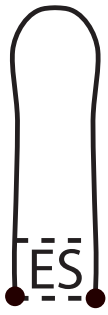


Body x 2

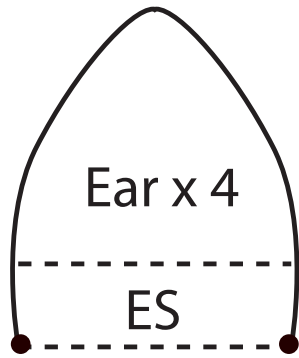
**Patterns**

Add a seam allowance to all pattern pieces. The edges of the patterns mark the seams.

Dotted lines indicate openings and folded edges. ES stands for Extra Seam allowance and appears by openings where it is important to continue the seam to the very end of the seam allowance. This ES is included in the pattern, and where it appears there is no need to add the normal allowance too.

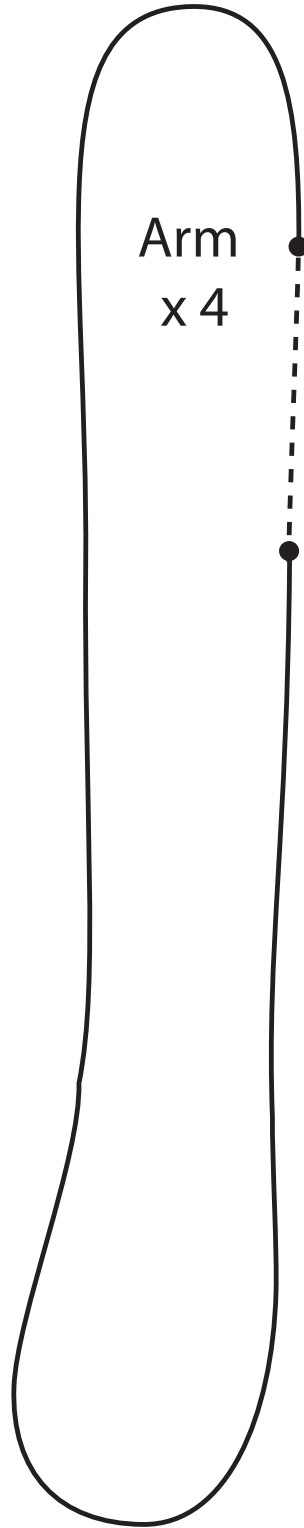


Horn x 4

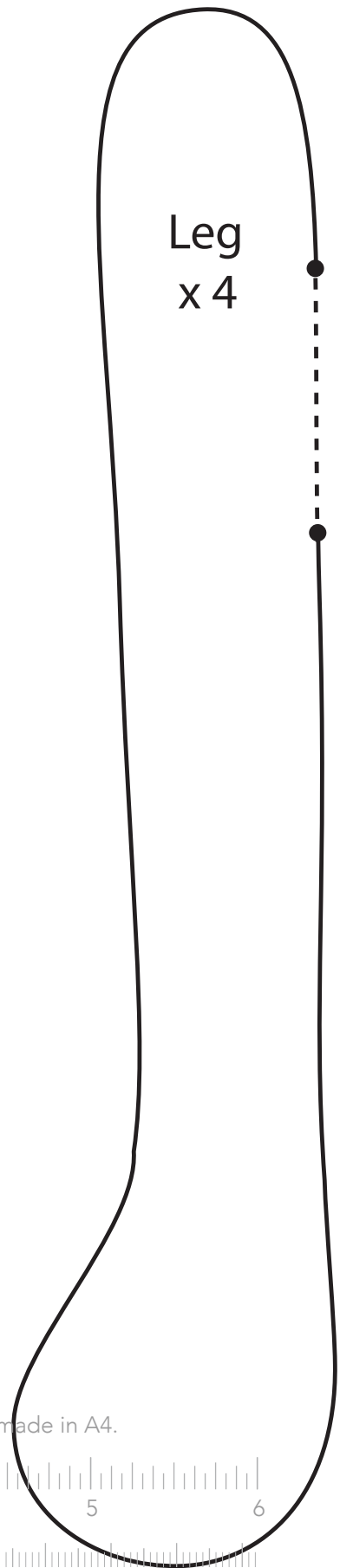


Ear x 4

ES



Arm  
x 4



Leg  
x 4

Please check this ruler to ensure that you are printing in 100%. Pages are made in A4.

