

# Tilda Friends



C O W

## Tilda Friends Cow

Height: 52cm (20½in)

The Cow can be made in Tilda Doll Fabric in Caramel (140002) or Biscuit (140001). For the horns we suggest using Sand (140003).

### You will need

- Tilda doll fabric 55cm x 50cm (21¾in x 19¾in) for the body
- Tilda doll fabric 21cm x 10cm (8¼in x 4in) for the horns
- Embroidery yarn in similar colour to skin fabric, for sewing on arms and legs (optional)
- Fiberfill approx. 170g

We also recommend using the following:

- Sewing machine
- Matching thread and a sewing needle for hand sewing
- Larger needle for embroidery yarn
- Flower stick or chopstick for turning and stuffing
- Thick paper for copying patterns
- Black hobby paint and a small metal-headed pin for eyes
- Soft pink lipstick, rouge or stamp pad, and a dry brush for rosy cheeks

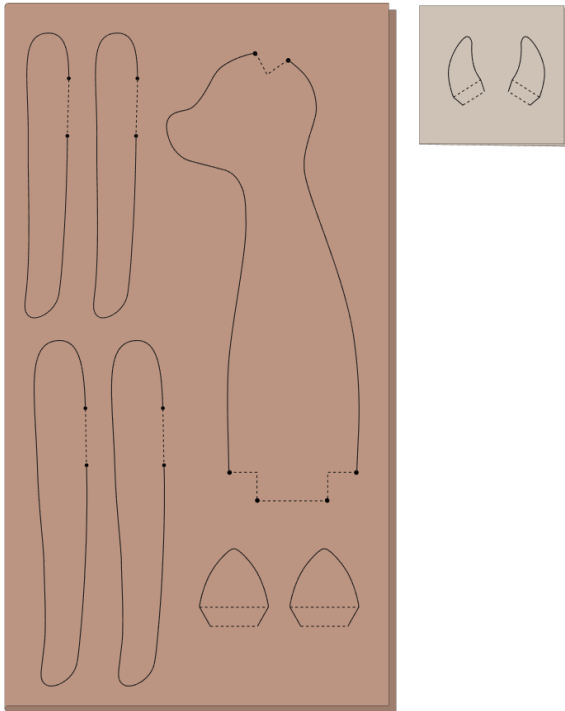
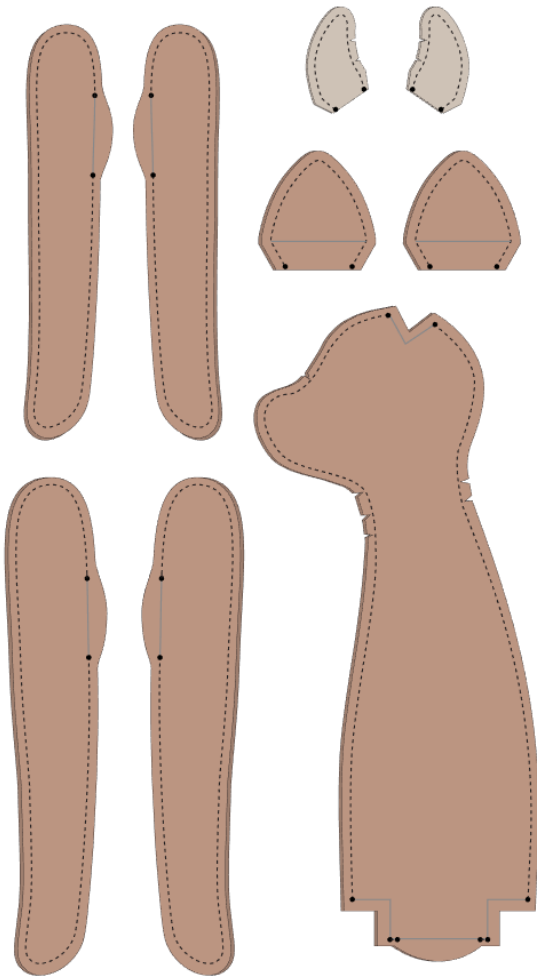
### Making the Cow

**1** Refer to the bullet points below on making the project and read all the project instructions through before you start.

- We suggest copying or gluing all the pattern pieces onto thick paper and then cutting out the shapes.
- When sewing the seams, reduce your stitch length to 1.5mm–1.6mm.
- Unless otherwise instructed, sew on the outer line of the pattern. Generally, no seam allowances are included in the patterns, *except* for areas marked with ES (extra seam allowance).
- Cut out the shapes after sewing, cutting ⅛in–¼in (3mm–6mm) outside the sewn line.
- To get a good shape, cut snips in the seam allowance where seams curve tightly inwards.
- Stuff well, using a stick to fill small areas.
- Sew up openings with matching thread and small slipstitches.

**2** Fold the piece of caramel or biscuit doll fabric right sides together, so it's about 11in x 19¾in (27.5cm x 50cm), and press. Using the patterns, draw one head/body, two legs, two arms and two ears (**Fig B**). Using the sand doll fabric for the horns, fold the fabric right sides together and draw two horns (**Fig B**).

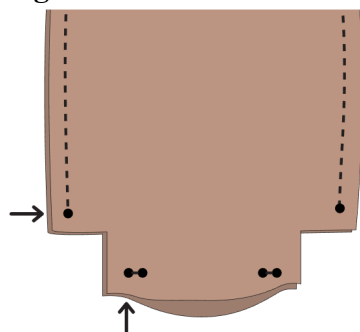
**3** On both pieces of fabric, mark all openings and then sew around the pieces (**Fig C**). Note that the opening in the head and at the bottom of the body should be open, except for two small seams on each side at the bottom, which are only there to keep the fabric together. Cut out the pieces with an approximate ⅛in (4mm) seam allowance, but add extra seam allowances by the openings. Cut notches where seams curve inwards.

**Fig B****Fig C**

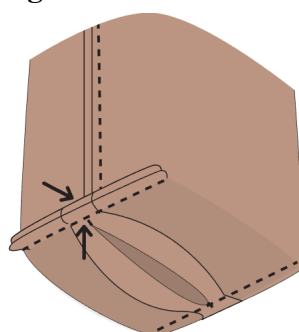


**4** Take the body piece and fold the fabric on each side of the opening at the bottom of the body, placing the seams over and under each other, as shown by the arrows in **Fig D**. Now sew together, as shown in **Fig E**.

**Fig D**

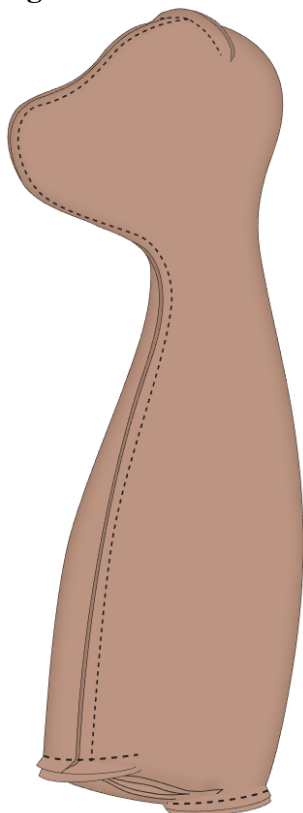


**Fig E**

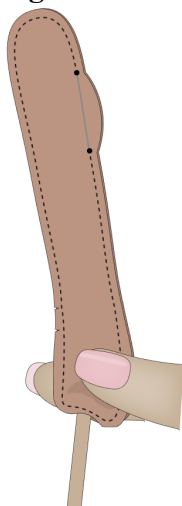
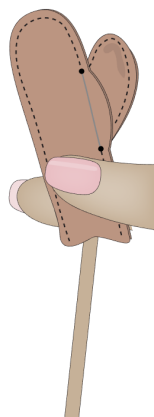


**5** Fold up the opening on the top of the head, placing the seams on top of each other to create depth, and then sew up the opening, as shown in **Fig F**.

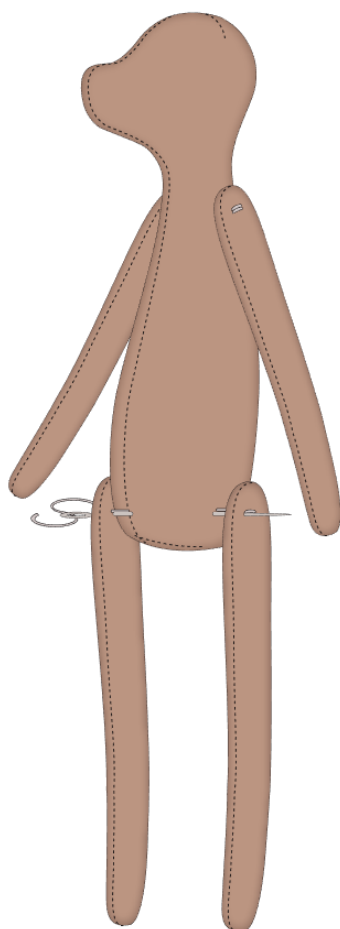
**Fig F**



**6** Turn all of the parts through to the right side, fold in the seam allowance by the openings and the extra seam allowance (ES) on the ears and horns, and then press. When turning thin arms and legs it is helpful to separate the two fabric layers by using your thumb and forefinger and then place the blunt end of a flower stick or similar tool against the end of the foot/hand (see **Fig G**). Use the stick to push the fabric through the leg/arm and up through and out of the turning opening (**Fig H**). Now pull the rest through the opening and use the stick to push through the top part.

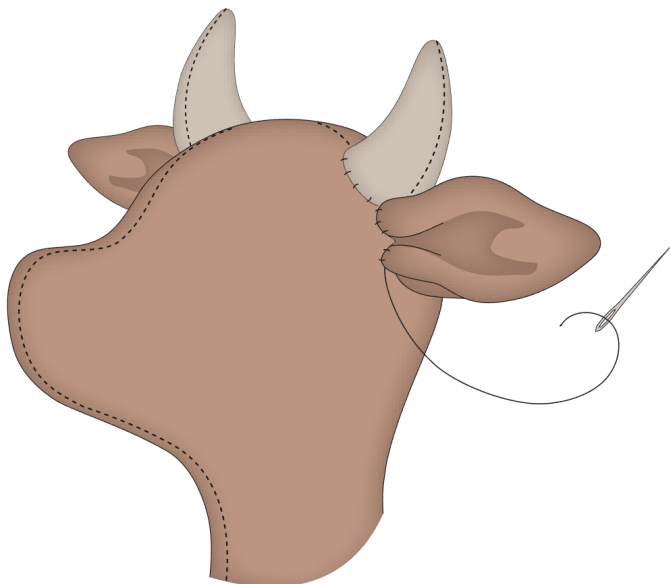
**Fig G****Fig H**

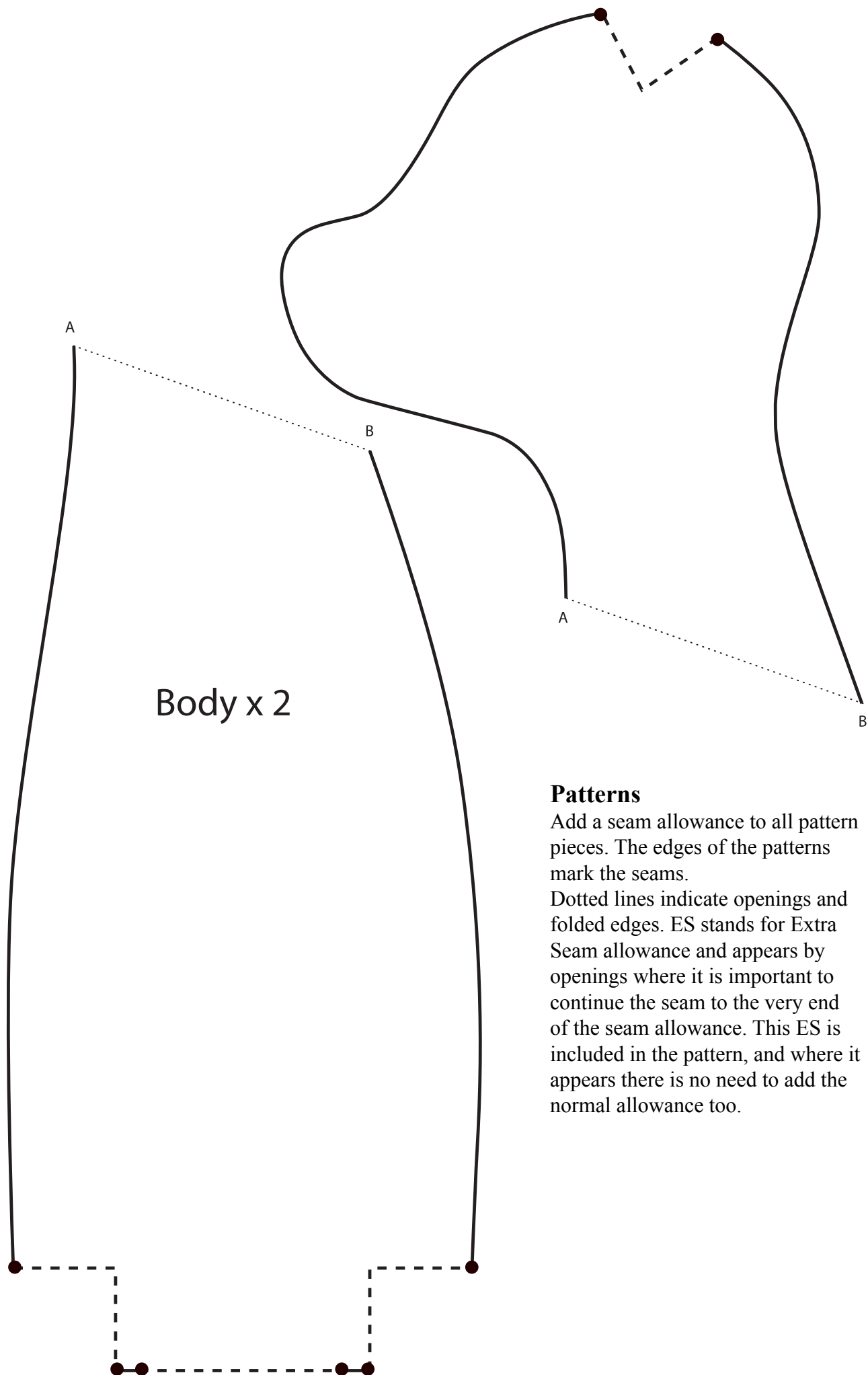
7 Stuff the body, arms, legs and horns. Sew up the openings on the arms and legs, but leave the openings on the horns open. To sew on the limbs, use a large needle and embroidery yarn or a doubled sewing thread to sew from one arm, right through the body, through the second arm and then back again. Repeat this, two or three times, to secure the arms tightly to the body (**Fig I**). This will enable them to move easily. Sew on the legs in the same way.

**Fig I**

**8** Attach the horns to the head with pins. Fold the ears slightly, as shown in **Fig J**, and attach them with pins beneath the horns on each side. Now sew everything in place. Stamp eyes onto the face using a metal pin with a small head, dipped in black hobby paint. When the eyes are dry, create rosy cheeks using lipstick or rouge and a dry brush.

**Fig J**

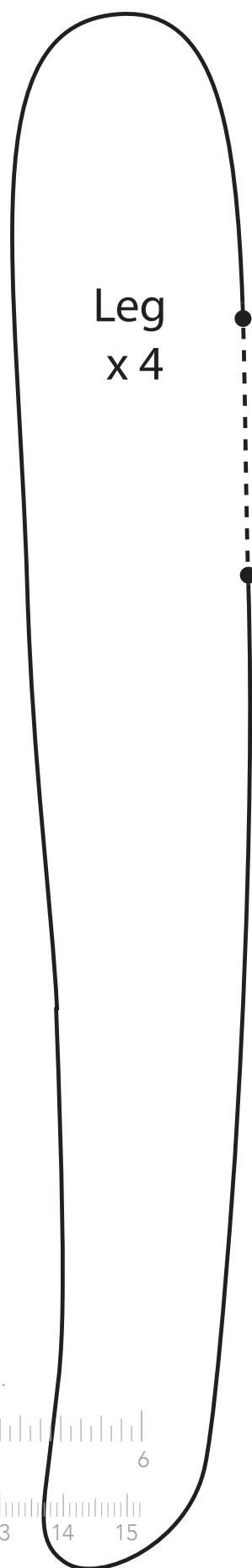
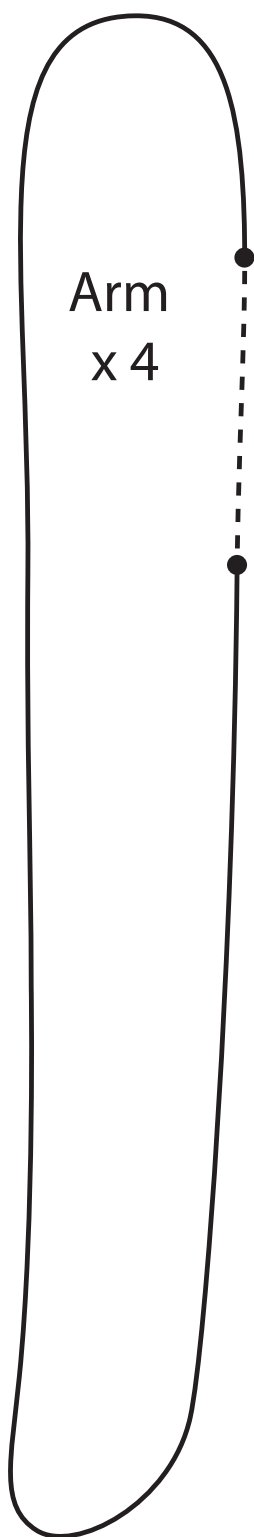
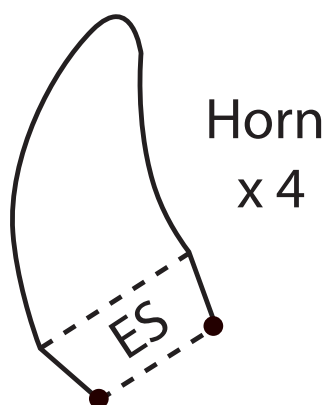
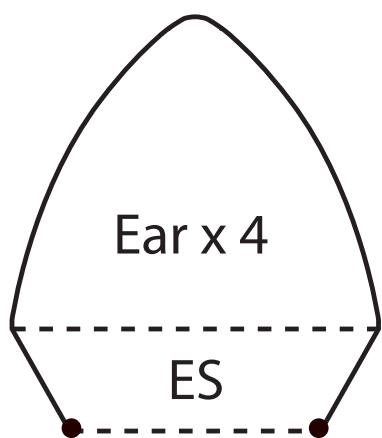




### Patterns

Add a seam allowance to all pattern pieces. The edges of the patterns mark the seams.

Dotted lines indicate openings and folded edges. ES stands for Extra Seam allowance and appears by openings where it is important to continue the seam to the very end of the seam allowance. This ES is included in the pattern, and where it appears there is no need to add the normal allowance too.



Please check this ruler to ensure that you are printing in 100%. Pages are made in A4.

