



Happy Camper
Adore You Baby Pillow



2 COLORWAYS

Adore You Baby Pillows

These pillows are the perfect companions to the Adore You Baby Quilts. They use the same bee, bird and flower blocks, just one of each, and can be made using different background fabrics. The two pillows shown here use solid thistle for one pillow and solid dusty rose for the other. Both pillows are made in the same way but use different fabrics for the background, the bird's beak, the backing and the binding – see details in the Materials list below.

Materials

Thistle version

- Fabric 1 (background): ½yd (50cm) – Solid thistle (120012)
- Fabric 11 (beak): scrap – Solid pink (120026)
- Backing fabric, two pieces 24in x 12in (61cm x 30.5cm) – Dottie Dots grey (130045)
- Binding fabric ¼yd (25cm) – Meadow peach (130087)

Dusty rose version

- Fabric 1 (background): ½yd (50cm) – Solid dusty rose (120009)
- Fabric 11 (beak): scrap – Solid salmon (120027)
- Backing fabric, two pieces 24in x 12in (61cm x 30.5cm) – Tiny Star grey (130039)
- Binding fabric ¼yd (25cm) – Meadow yellow (130084)

Materials for each pillow

- Print fabrics for the blocks: see fabric list in Adore You Baby Quilt in grey – approximately a 10in (25.4cm) square of each print for each block will suffice
- Lining fabric (optional) 40in x 13½in (101.6cm x 34.3cm)
- Wadding 40in x 13½in (101.6cm x 34.3cm)
- Piecing and quilting threads
- Quilter's ruler, rotary cutter and mat
- Black embroidery cotton (floss) for eye
- White (or black) embroidery cotton (floss) for bee antennae (if not quilting)
- Pillow pad to fit cover

Finished Size

37½in x 11½in (95.2cm x 29.2cm) approx. after binding

Cutting Out

1 To cut out the pieces for the blocks follow the instructions in the Adore You Baby Quilt in grey (and the Mix and Match Blocks instructions).

Making the Patchwork

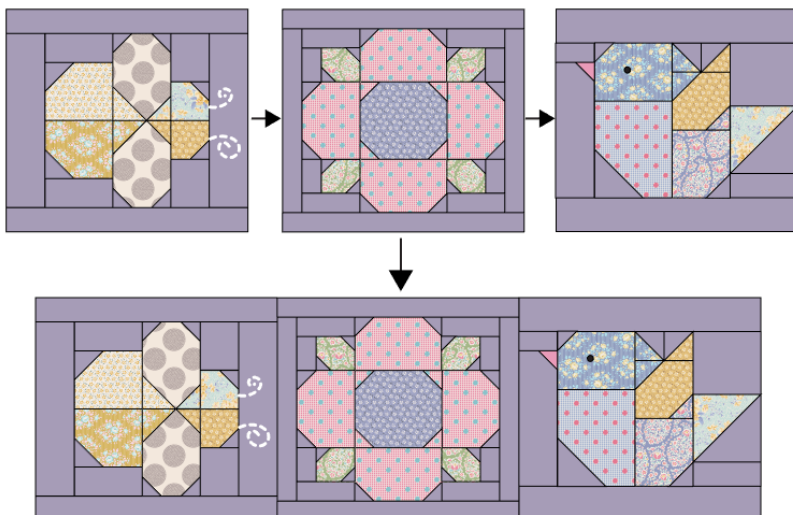
2 Make the blocks follow the instructions in the Adore You Baby Quilt in grey (and the Mix and Match Blocks instructions).

Assembling, Quilting and Making Up

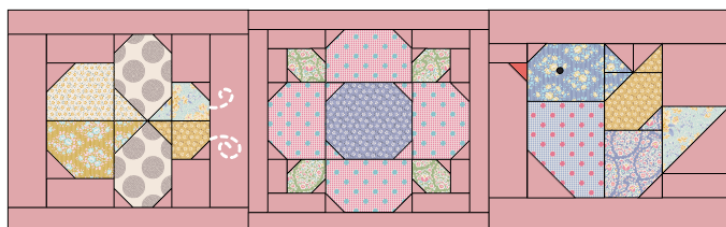
3 Sew the three blocks together in a row and press. **Fig A** here shows the layout for the thistle version and also the dusty rose version.

Fig A Assembling the pillow

Thistle pillow



Dusty rose pillow



4 Make a quilt sandwich of the patchwork, wadding (batting) and lining fabric (if using). Quilt as desired. Trim excess wadding and lining to match the patchwork size.

5 To make up the pillow cover, on both pieces of fabric for the pillow back, create a hem along one short side of each piece, by turning the edge over by $\frac{1}{2}$ in (1.3cm), twice. Sew the seam with matching thread and press.

6 The pillow has a bound edge, so the pieces are assembled with right sides out, as follows. Place the quilted patchwork right side down. Pin one backing piece on top, right side up and with the hem towards the centre. Pin the second backing piece on top, right side up and hem towards the centre (so the backing pieces overlap). Make sure the outer edges of all three pieces are aligned. Pin the layers together and then bind as normal. As you sew the binding in place it will fix the other layers together. Press the cover and insert a pillow pad to finish.