

Tilda®



Old Rose

Soft Star Quilt



3 COLORWAYS

Soft Star Quilt

(Teal and grey colourway)

Just two patchwork blocks are used for this lovely quilt, both with the same layout but with a different balance of fabrics. There are two other versions of this quilt – a lilac/blue and a red/grey – see www.tildasworld.com for the free patterns.

Materials

- Fabric 1: 1yd (1m) – Spongecake Stripes teal (130066)
- Fabric 2: 1yd (1m) – Pen Stripe light blue (130032)
- Fabric 3: ½yd (50cm) – Angel Scraps grey (110001)
- Fabric 4: ¾yd (75cm) – Tiny Dots light blue (130047)
- Fabric 5: ¾yd (75cm) – Scone Stripe teal (130064)
- Fabric 6: ¾yd (40cm) – Eliza grey (100210)
- Fabric 7: ¾yd (40cm) – Lydia grey (100206)
- Fabric 8: ¾yd (40cm) – Mary teal (100207)
- Fabric 9: ¾yd (35cm) – Lucy teal mist (100209)
- Fabric 10: ¾yd (40cm) – Sophie teal (130077)
- Fabric 11: ¾yd (40cm) – Birdsong teal green (100208)
- Fabric 12: ¾yd (40cm) – Biscotti Plaid teal (130065)
- Backing fabric 2yds (2m) if using Luna teal sage (150003) (108in/274cm wide) or 3¾yds (3.4m) if using a standard-width backing fabric
- Binding fabric ½yd (50cm) – Apple Cake Stripe red (130068)
- Wadding (batting) 67in x 82in (170cm x 208cm)
- Piecing and quilting threads
- Quilter's ruler, rotary cutter and mat
- Clear plastic (or template plastic) for triangle template

Finished Size

58¼in x 73in (148cm x 185.4cm) after binding

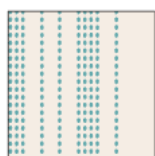
Notes

- Fabric quantities given are based on a usable width of 42in (107cm), except Luna Teal sage backing fabric, which is an extra-wide one 108in (274cm).
- Measurements are in imperial inches with metric conversions in brackets – use only *one* system throughout (preferably inches).
- Press all fabrics before cutting.
- Use ¼in (6mm) seams unless otherwise instructed.
- Read all the instructions through before you start.

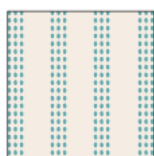
Quilt Layout

1 The quilt is made up Block A and Block B, with ten of each block in a 4 x 5 block layout. See **Fig A** for the fabrics used and **Fig B** for the quilt layout. The blocks are all made the same way but with two different arrangements of the fabrics. **Fig C** shows the layout and fabrics used for Block A. **Fig D** shows the layout and fabrics used for Block B.

Fig A Fabric swatches (teal/grey quilt)



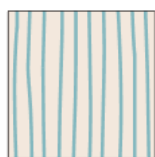
Fabric 1
Spongecake Stripes
teal



Fabric 5
Scone Stripe
teal



Fabric 9
Lucy
teal mist



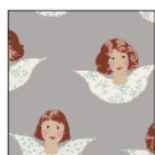
Fabric 2
Pen Stripe
light blue



Fabric 6
Eliza
grey



Fabric 10
Sophie
teal



Fabric 3
Angel Scraps
grey



Fabric 7
Lydia
grey



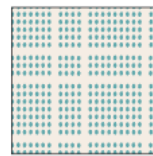
Fabric 11
Birdsong
teal green



Fabric 4
Tiny Dots
light blue



Fabric 8
Mary
teal



Fabric 12
Biscotti Plaid
teal

Fig B Quilt layout

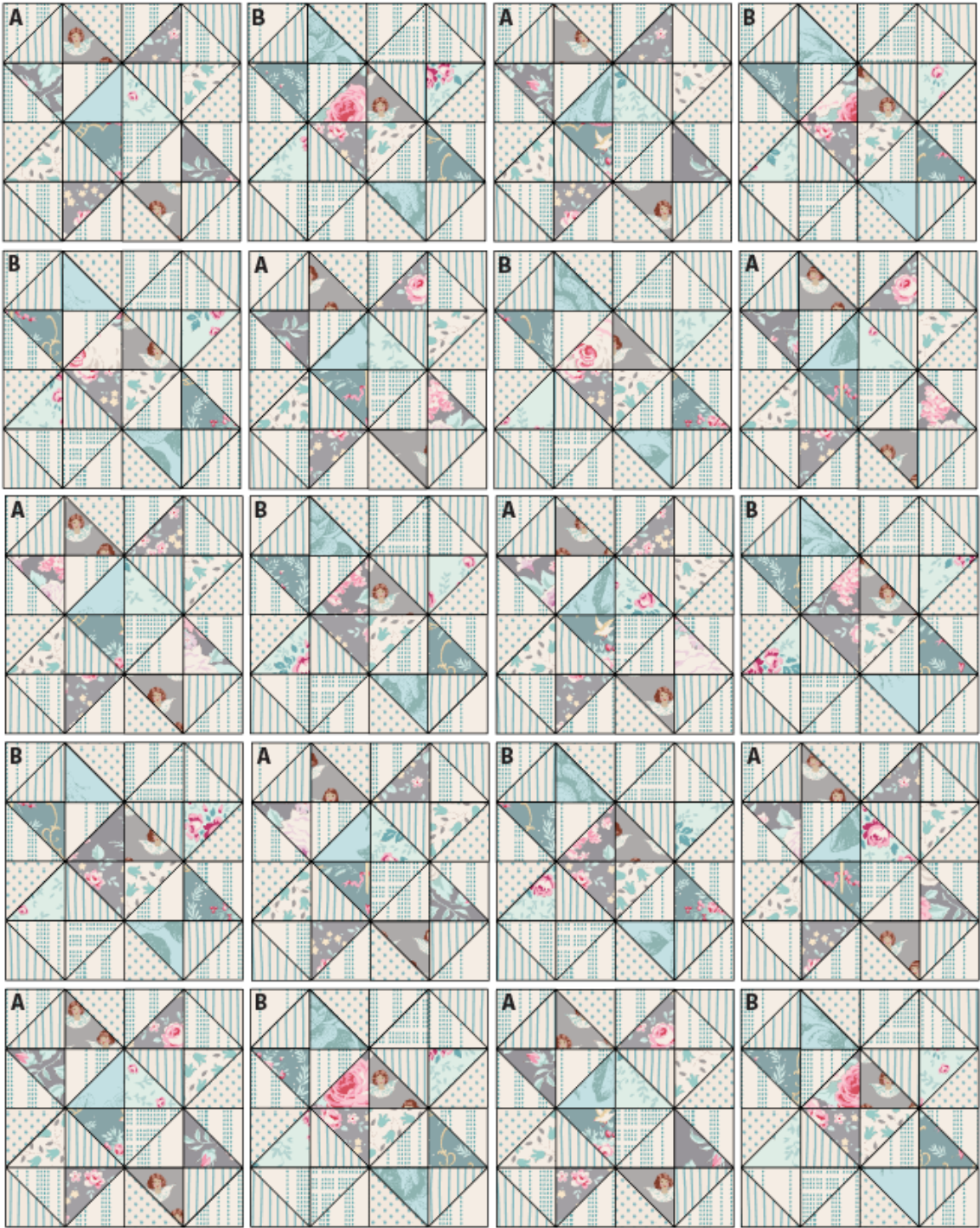


Fig C Fabrics and layout for Block A

Numbers indicate fabrics used (see Fig A)

Make 10 blocks

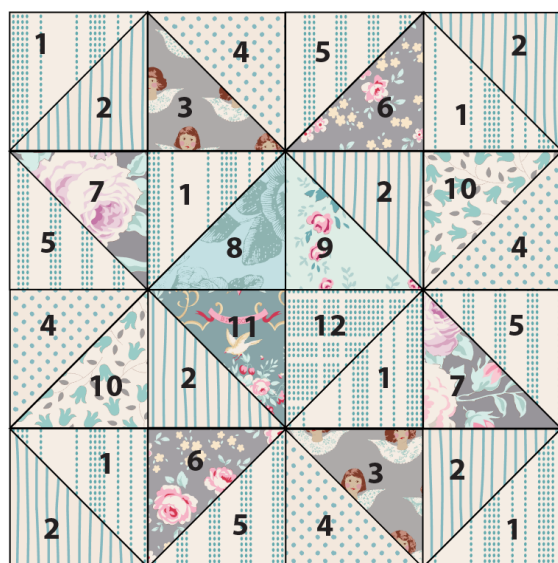
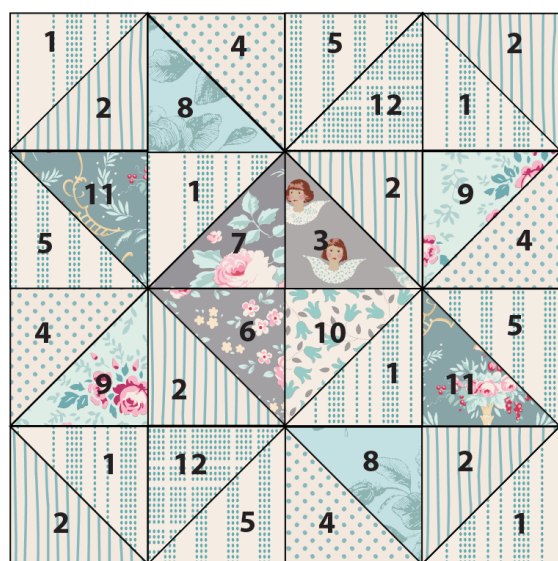


Fig D Fabrics and layout for Block B

Numbers indicate fabrics used (see Fig A)

Make 10 blocks



Cutting Out

2 The blocks are made up of triangles sewn together. The triangles are cut from 4½in (11.4cm) squares, cut across the fabric width, with each square cut once along one diagonal to make two triangles. The direction of the diagonal cut depends on how you want the fabric to look in the finished quilt.

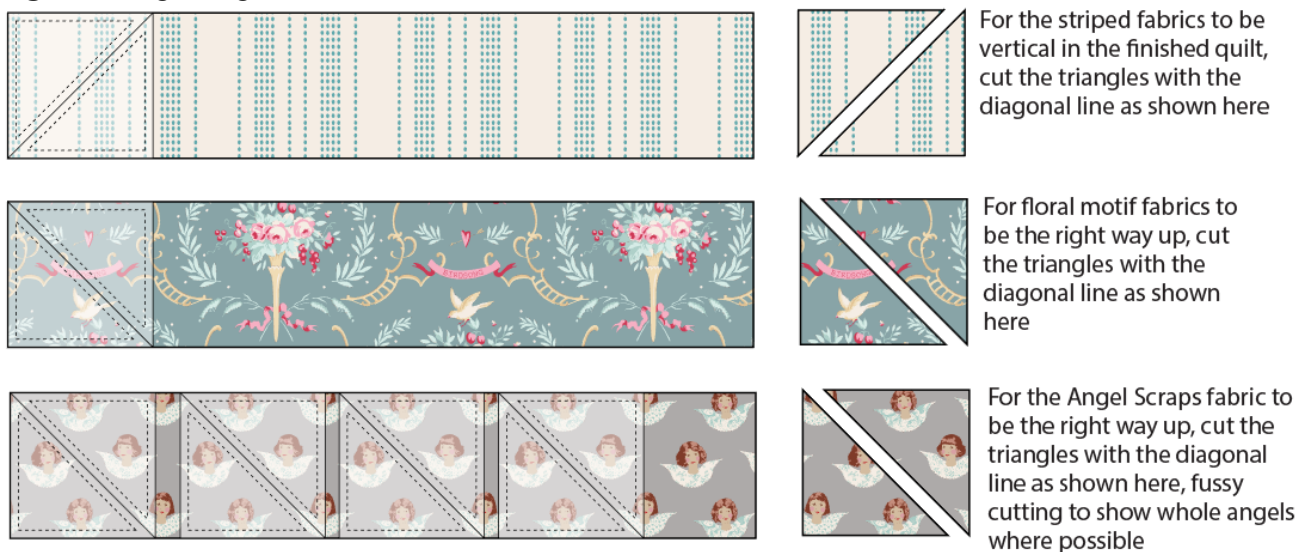
- Striped fabrics: If you want the stripes to run in the vertical direction shown in the finished quilt, then cut the diagonal line from bottom left to top right, as shown in **Fig E**.
- Floral/directional fabrics: If you want the motifs on the floral fabrics to be the right way up in the finished quilt, then cut the diagonal line from top left to bottom right, as shown in **Fig E**.

- Angel Scraps fabric: If you want the angels to be the right way up in the finished quilt, then cut the diagonal line from top left to bottom right, as shown in **Fig E**. We have also fussy cut the fabric to show whole angels where possible. To do this, make a template of a 4½in (11.4cm) triangle from a transparent material, such as template plastic or clear plastic from packaging. Place the clear triangle over the fabric to enclosed a whole angel and then mark and cut out the triangle. There is some fabric wastage with fussy cutting.

Safety Note

Do not use a rotary cutter against the side of the clear plastic template as you will risk cutting yourself. Use a pencil to mark the shape and then use a quilting ruler and rotary cutter to cut out the shape.

Fig E Cutting triangles



3 Cut the following numbers of triangles for the quilt (640 in total for the whole quilt).

- Fabric 1 – 120 triangles.
- Fabric 2 – 120 triangles.
- Fabric 3 – 30 triangles.
- Fabric 4 – 80 triangles.
- Fabric 5 – 80 triangles.
- Fabric 6 – 30 triangles.
- Fabric 7 – 30 triangles.
- Fabric 8 – 30 triangles.
- Fabric 9 – 30 triangles.
- Fabric 10 – 30 triangles.
- Fabric 11 – 30 triangles.
- Fabric 12 – 30 triangles.

4 If using extra-wide backing fabric, cut a piece 67in x 82in (170cm x 208cm). This is about 4in (10.2cm) larger all round than the quilt top, to allow for quilting and finishing.

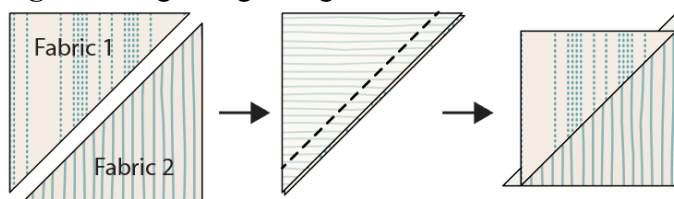
If using standard-width backing, cut the backing fabric across the width into two pieces. Using a $\frac{1}{4}$ in (6mm) seam, sew together along the long side and press the seam open. Trim to a piece 67in x 82in (170cm x 208cm).

5 Cut the binding fabric into seven strips $2\frac{1}{2}$ in (6.4cm) x width of fabric. Sew the strips together end to end and press seams open. Press the binding in half along the length, wrong sides together.

Making the Blocks

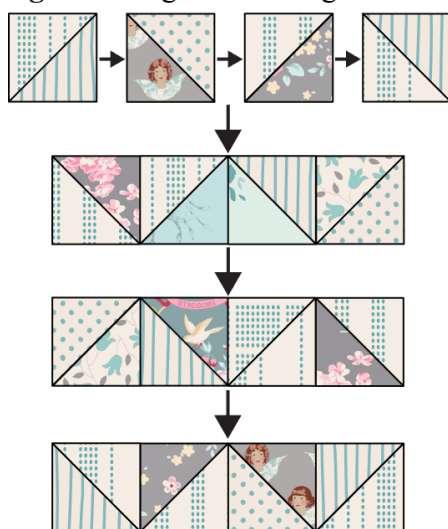
6 Block A and Block B use half-square triangle (HST) units, each made one at a time by sewing two triangles together. Make Block A first, selecting the triangles shown in **Fig C** and pairing them up. Place two triangles right sides together and sew a $\frac{1}{4}$ in (6mm) seam along the long side (**Fig F**). Press the seam open or to one side. Repeat to make sixteen half-square triangle units for Block A.

Fig F Sewing triangles together



7 To assemble Block A, lay out the sixteen half-square triangle units as shown in **Fig G**. Sew the units together into rows and press. Sew the rows together and press. Check the block is 15in (38.1cm) square. Repeat this process to make ten of Block A in total.

Fig G Sewing Block A together



8 Make and assemble Block B in the same way as Block A, but using the half-square triangle units shown in **Fig D**. Make ten of Block B in total.

Assembling the Quilt

9 Follow the quilt layout in **Fig B**, arranging the A and B blocks in an alternating order. Sew the blocks together in rows and then sew the rows together, matching seams neatly, and press.

Quilting and Finishing

10 If you are quilting the quilt yourself you now need to make a quilt sandwich – you can do this in various ways, as follows.

- Use large stitches to tack a grid through the layers of the quilt in both directions, with lines about 4in (10cm) apart.
- Use pins or safety pins to fix the layers together.
- Use fabric glue, sprayed onto the wadding to fix the layers together.

If you are sending the quilt off to be commercially long-arm quilted you won't need to make a sandwich, as this is done when the quilt is mounted on the machine. When the layers of the quilt are secured you can quilt as desired.

11 Use the prepared double-fold binding strip to bind your quilt. Sew the binding to the quilt by pinning the raw edge of the folded binding against the raw edge of the quilt. Don't start at a corner. Using a $\frac{1}{4}$ in (6mm) seam, sew the binding in place, starting at least 6in (15.2cm) away from the end of the binding. Sew to within a $\frac{1}{4}$ in (6mm) of a corner and stop. Take the quilt off the machine and fold the binding upwards, creating a mitred corner. Hold this in place, fold the binding back down and pin it in place. Begin sewing the $\frac{1}{4}$ in (6mm) seam again from the top of the folded binding to within $\frac{1}{4}$ in (6mm) of the next corner and then repeat the folding process. Do this on all corners. Leave a 6in (15.2cm) 'tail' of unsewn binding at the end.

12 To join the two ends of the binding, open up the beginning and end of the binding tails, lay them flat and fold the ends back so the two ends touch. Mark these folds by creasing or with pins – this is where your seam needs to be. Open out the binding and sew the pieces together at these creases. Trim off excess fabric and press the seam. Re-fold the binding and finish stitching it in place on the front of the quilt.

13 With the quilt right side up, use a medium-hot iron to press the binding outwards all round. Now begin to turn the binding over to the back of the quilt, pinning it in place. Use matching sewing thread and tiny stitches to slipstitch the binding in place all round, creating neat mitres at each corner. Press the binding and your lovely quilt is finished.

Soft Star Quilt

(Lilac and blue colourway)

This quilt is made in exactly the same way as the teal and grey version, but with different fabrics. Refer to the teal and grey version to see the full instructions for making the quilt. A red and grey version is also available – see www.tildasworld.com.

Materials

- Fabric 1: 1yd (1m) – Brownie Stripe plum (130070)
- Fabric 2: 1yd (1m) – Cookie Stripe blue (130062)
- Fabric 3: $\frac{3}{8}$ yd (40cm) – Lydia blue (100213)
- Fabric 4: $\frac{3}{4}$ yd (75cm) – Biscuit Stripe blue (130061)
- Fabric 5: $\frac{3}{4}$ yd (75cm) – Cantucci Stripe plum (130072)
- Fabric 6: $\frac{3}{8}$ yd (40cm) – Birdsong blue (100215)
- Fabric 7: $\frac{3}{8}$ yd (40cm) – Eliza blue (100211)
- Fabric 8: $\frac{3}{8}$ yd (40cm) – Lydia lavender (100220)
- Fabric 9: $\frac{3}{8}$ yd (35cm) – Mary lilac mist (100217)
- Fabric 10: $\frac{3}{8}$ yd (40cm) – Macaron Plaid blue (130063)
- Fabric 11: $\frac{1}{2}$ yd (50cm) – Angel Scraps mauve (110004)
- Fabric 12: $\frac{3}{8}$ yd (40cm) – Eliza mauve lilac (100218)
- Backing fabric 2yds (2m) if using Luna blue (150002) (108in/274cm wide) or $3\frac{3}{4}$ yds (3.4m) if using a standard-width backing fabric
- Binding fabric $\frac{1}{2}$ yd (50cm) – Mary blue (100214)
- Wadding (batting) 67in x 82in (170cm x 208cm)
- Piecing and quilting threads
- Quilter's ruler, rotary cutter and mat
- Clear plastic (or template plastic) for triangle template

Finished Size

58 $\frac{1}{4}$ in x 73in (148cm x 185.4cm) after binding

Notes

- Fabric quantities given are based on a usable width of 42in (107cm), except Luna Teal sage binding fabric, which is an extra-wide one 108in (274cm).
- Measurements are in imperial inches with metric conversions in brackets – use only *one* system throughout (preferably inches).
- Press all fabrics before cutting.
- Use $\frac{1}{4}$ in (6mm) seams unless otherwise instructed.
- Read all the instructions through before you start.

Quilt Layout

1 The quilt is made up Block A and Block B, with ten of each block in a 4 x 5 block layout. See **Fig A** for the fabrics used and **Fig B** for the quilt layout. The blocks are all made the same way but with two different arrangements of the fabrics. **Fig C** shows the layout and fabrics used for Block A. **Fig D** shows the layout and fabrics used for Block B.

Fig A Fabric swatches (lilac/blue quilt)

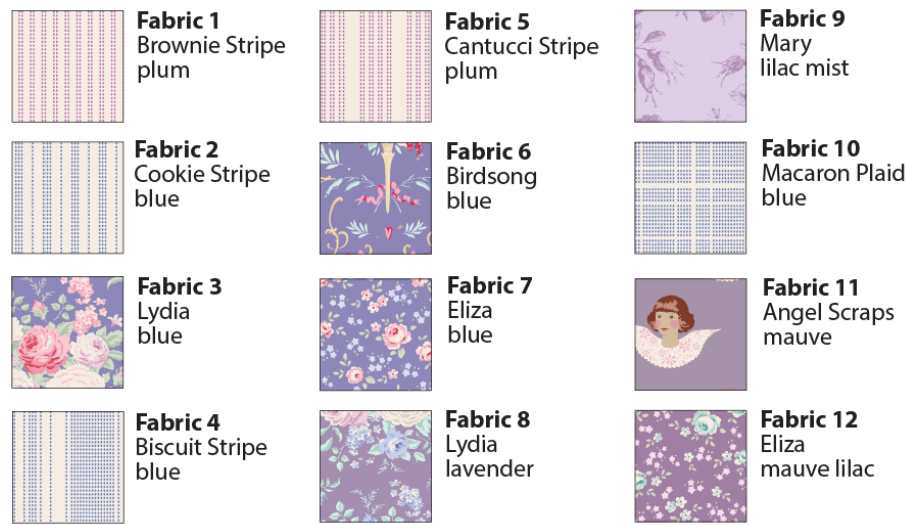


Fig B Quilt layout

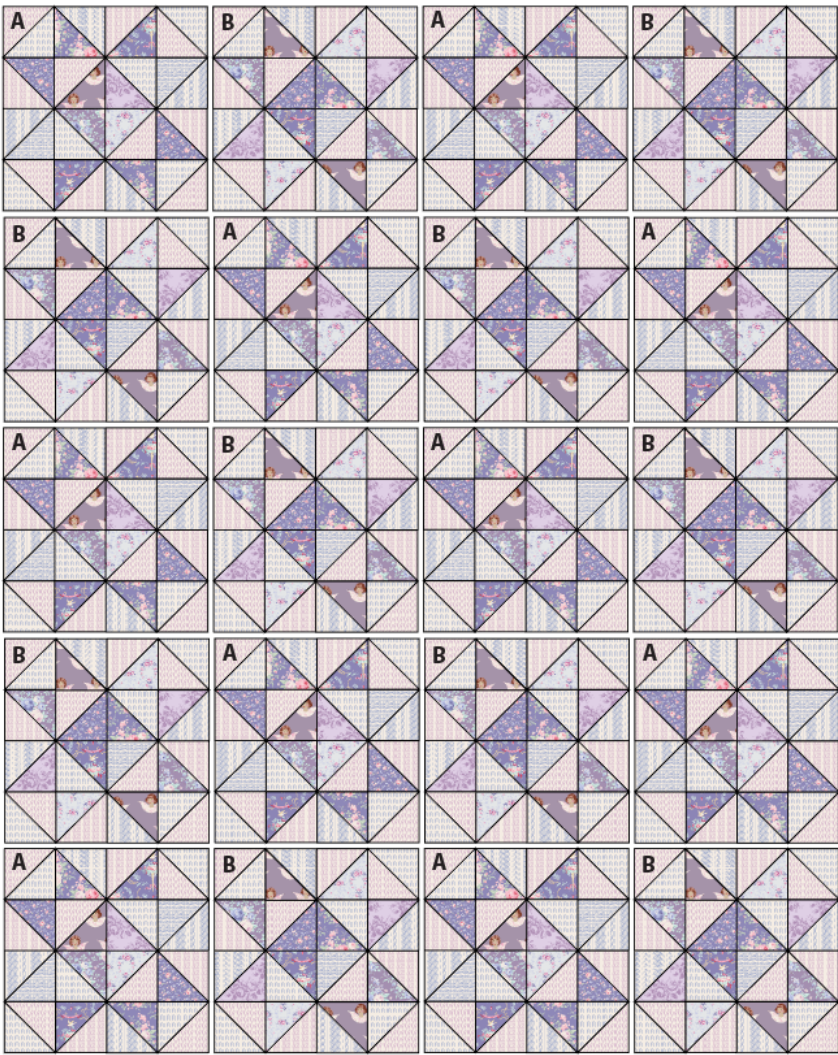
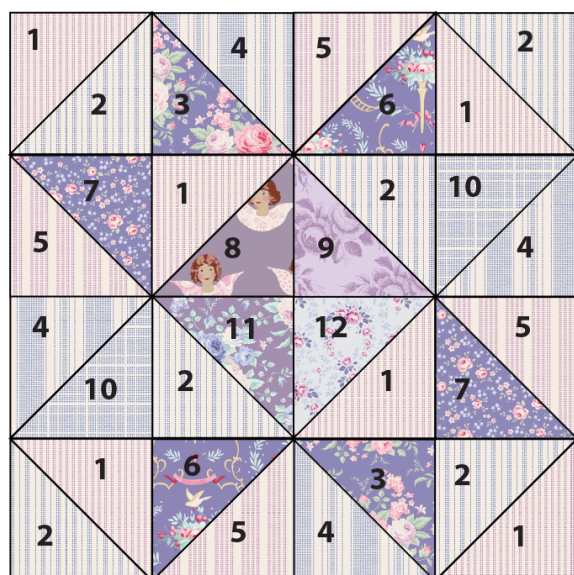


Fig C Fabrics and layout for Block A

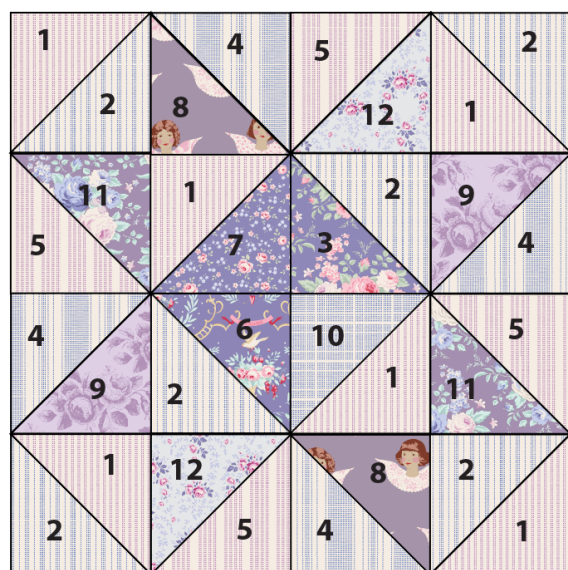
Numbers indicate fabrics used (see Fig A)

Make 10 blocks

**Fig D** Fabrics and layout for Block B

Numbers indicate fabrics used (see Fig A)

Make 10 blocks



Cutting Out

2 The blocks are made up of triangles sewn together. The triangles are cut from 4½in (11.4cm) squares, cut across the fabric width, with each square cut once along one diagonal to make two triangles. The direction of the diagonal cut depends on how you want the fabric to look in the finished quilt.

- Striped fabrics: If you want the stripes to run in the vertical direction shown in the finished quilt, then cut the diagonal line from bottom left to top right.
- Floral/directional fabrics: If you want the motifs on the floral fabrics to be the right way up in the finished quilt, then cut the diagonal line from top left to bottom right.
- Angel Scraps fabric: If you want the angels to be the right way up in the finished quilt, then cut the diagonal line from top left to bottom right. We have also fussy cut the fabric to show whole angels where possible. To do this, make a template of a 4½in (11.4cm) triangle from a transparent material, such as template plastic or clear plastic from packaging. Place the clear triangle over the fabric to enclosed a whole angel and then mark and cut out the triangle. There is some fabric wastage with fussy cutting.

Safety Note

Do not use a rotary cutter against the side of the clear plastic template as you will risk cutting yourself. Use a pencil to mark the shape and then use a quilting ruler and rotary cutter to cut out the shape.

3 Cut the following numbers of triangles for the quilt (640 in total for the whole quilt).

- Fabric 1 – 120 triangles.
- Fabric 2 – 120 triangles.
- Fabric 3 – 30 triangles.
- Fabric 4 – 80 triangles.
- Fabric 5 – 80 triangles.
- Fabric 6 – 30 triangles.
- Fabric 7 – 30 triangles.
- Fabric 8 – 30 triangles.
- Fabric 9 – 30 triangles.
- Fabric 10 – 30 triangles.
- Fabric 11 – 30 triangles.
- Fabric 12 – 30 triangles.

4 If using extra-wide backing fabric, cut a piece 67in x 82in (170cm x 208cm). This is about 4in (10.2cm) larger all round than the quilt top, to allow for quilting and finishing.

If using standard-width backing, cut the backing fabric across the width into two pieces. Using a ¼in (6mm) seam, sew together along the long side and press the seam open. Trim to a piece 67in x 82in (170cm x 208cm).

5 Cut the binding fabric into seven strips 2½in (6.4cm) x width of fabric. Sew the strips together end to end and press seams open. Press the binding in half along the length, wrong sides together.

Making the Blocks

6 Make ten of Block A and ten of Block B following the instructions in Steps 6–8 of the teal/grey quilt but using **Fig C** and **Fig D** here for the fabrics.

Assembling the Quilt

7 Sew the quilt together following **Fig B** here, arranging the A and B blocks in an alternating order. Sew the blocks together in rows and then sew the rows together, matching seams neatly, and press.

Quilting and Finishing

8 Quilt and bind the quilt following the instructions in Steps 10–13 of the teal/grey quilt.

Soft Star Quilt

(Red and grey colourway)

This quilt is made in exactly the same way as the teal and grey version, but with different fabrics. Refer to the teal and grey version to see the full instructions for making the quilt. A lilac and blue version is also available – see www.tildasworld.com.

Materials

- Fabric 1: 1yd (1m) – Apple Cake Stripe red (130068)
- Fabric 2: 1yd (1m) – Tiny Star grey (130039)
- Fabric 3: $\frac{3}{8}$ yd (40cm) – Lydia raspberry (100202)
- Fabric 4: $\frac{3}{4}$ yd (75cm) – Tiny Dots light grey (130048)
- Fabric 5: $\frac{3}{4}$ yd (75cm) – Lucy red rose (100201)
- Fabric 6: $\frac{3}{8}$ yd (40cm) – Eliza raspberry (100204)
- Fabric 7: $\frac{3}{8}$ yd (40cm) – Medium Dots red (130027)
- Fabric 8: $\frac{3}{8}$ yd (40cm) – Eliza grey (100210)
- Fabric 9: $\frac{3}{8}$ yd (35cm) – Lydia grey (100206)
- Fabric 10: $\frac{3}{8}$ yd (40cm) – Sophie pink (130080)
- Fabric 11: $\frac{1}{2}$ yd (50cm) – Angel Scraps grey (110001)
- Fabric 12: $\frac{3}{8}$ yd (40cm) – Crisscross grey (130042)
- Backing fabric 2yd (2m) if using Luna pink/grey (150001) (108in/274cm wide), or $3\frac{3}{4}$ yds (3.4m) if using a standard-width backing fabric
- Binding fabric $\frac{1}{2}$ yd (50cm) – Dottie Dots grey (130045)
- Wadding (batting) 67in x 82in (170cm x 208cm)
- Piecing and quilting threads
- Quilter's ruler, rotary cutter and mat
- Clear plastic (or template plastic) for triangle template

Finished Size

58 $\frac{1}{4}$ in x 73in (148cm x 185.4cm) after binding

Notes

- Fabric quantities given are based on a usable width of 42in (107cm), except Luna Teal sage binding fabric, which is an extra-wide one 108in (274cm).
- Measurements are in imperial inches with metric conversions in brackets – use only *one* system throughout (preferably inches).
- Press all fabrics before cutting.
- Use $\frac{1}{4}$ in (6mm) seams unless otherwise instructed.
- Read all the instructions through before you start.

Quilt Layout

1 The quilt is made up Block A and Block B, with ten of each block in a 4 x 5 block layout. See **Fig A** for the fabrics used and **Fig B** for the quilt layout. The blocks are all made the same way but with two different arrangements of the fabrics. **Fig C** shows the layout and fabrics used for Block A. **Fig D** shows the layout and fabrics used for Block B.

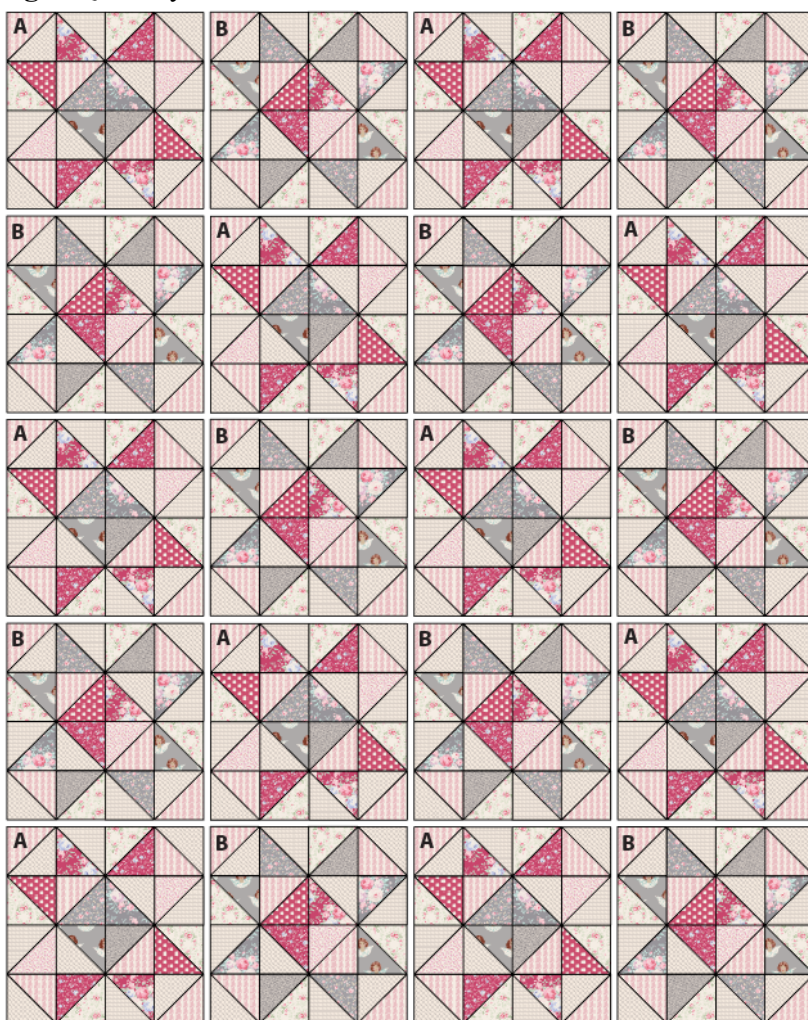
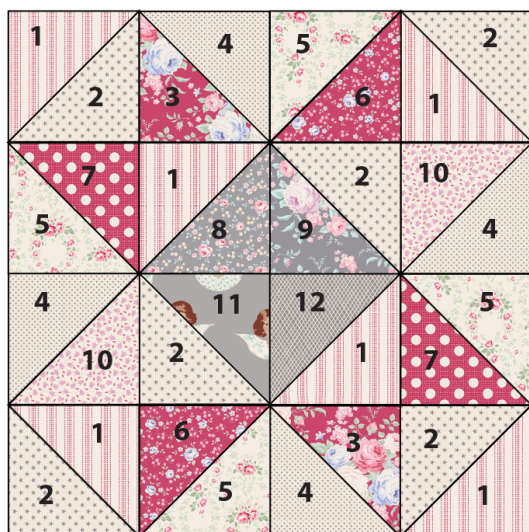
Fig A Fabric swatches (red/grey quilt)**Fig B** Quilt layout

Fig C Fabrics and layout for Block A

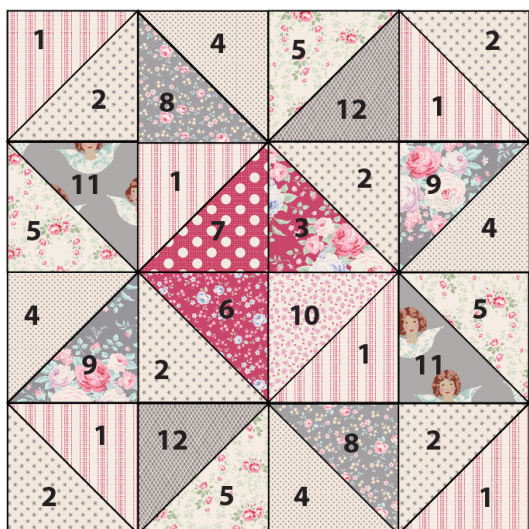
Numbers indicate fabrics used (see Fig A)

Make 10 blocks

**Fig D** Fabrics and layout for Block B

Numbers indicate fabrics used (see Fig A)

Make 10 blocks



Cutting Out

2 The blocks are made up of triangles sewn together. The triangles are cut from 4½in (11.4cm) squares, cut across the fabric width, with each square cut once along one diagonal to make two triangles. The direction of the diagonal cut depends on how you want the fabric to look in the finished quilt.

- Striped fabrics: If you want the stripes to run in the vertical direction shown in the finished quilt, then cut the diagonal line from bottom left to top right.

- Floral/directional fabrics: If you want the motifs on the floral fabrics to be the right way up in the finished quilt, then cut the diagonal line from top left to bottom right.
- Angel Scraps fabric: If you want the angels to be the right way up in the finished quilt, then cut the diagonal line from top left to bottom right. We have also fussy cut the fabric to show whole angels where possible. To do this, make a template of a 4½in (11.4cm) triangle from a transparent material, such as template plastic or clear plastic from packaging. Place the clear triangle over the fabric to enclosed a whole angel and then mark and cut out the triangle. There is some fabric wastage with fussy cutting.

Safety Note

Do not use a rotary cutter against the side of the clear plastic template as you will risk cutting yourself. Use a pencil to mark the shape and then use a quilting ruler and rotary cutter to cut out the shape.

3 Cut the following numbers of triangles for the quilt (640 in total for the whole quilt).

- Fabric 1 – 120 triangles.
- Fabric 2 – 120 triangles.
- Fabric 3 – 30 triangles.
- Fabric 4 – 80 triangles.
- Fabric 5 – 80 triangles.
- Fabric 6 – 30 triangles.
- Fabric 7 – 30 triangles.
- Fabric 8 – 30 triangles.
- Fabric 9 – 30 triangles.
- Fabric 10 – 30 triangles.
- Fabric 11 – 30 triangles.
- Fabric 12 – 30 triangles.

4 If using extra-wide backing fabric, cut a piece 67in x 82in (170cm x 208cm). This is about 4in (10.2cm) larger all round than the quilt top, to allow for quilting and finishing.

If using standard-width backing, cut the backing fabric across the width into two pieces. Using a ¼in (6mm) seam, sew together along the long side and press the seam open. Trim to a piece 67in x 82in (170cm x 208cm).

5 Cut the binding fabric into seven strips 2½in (6.4cm) x width of fabric. Sew the strips together end to end and press seams open. Press the binding in half along the length, wrong sides together.

Making the Blocks

6 Make ten of Block A and ten of Block B following the instructions in Steps 6–8 of the teal/grey quilt but using **Fig C** and **Fig D** here for the fabrics.

Assembling the Quilt

7 Sew the quilt together following **Fig B** here, arranging the A and B blocks in an alternating order. Sew the blocks together in rows and then sew the rows together, matching seams neatly, and press.

Quilting and Finishing

8 Quilt and bind the quilt following the instructions in Steps 10–13 of the teal/grey quilt.