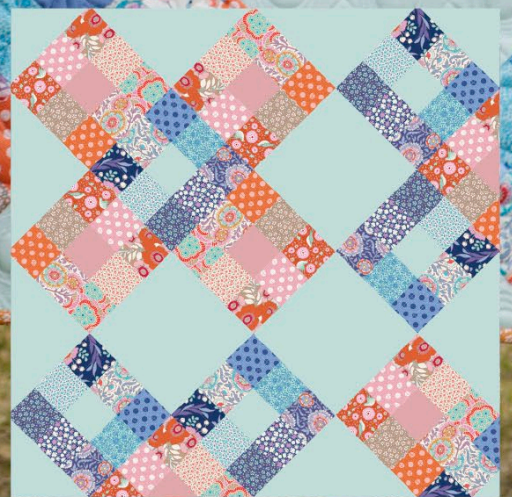




Tilda®

## CROSS QUILT

THE  
*Bird Pond*  
COLLECTION





## Cross Quilt (Red and Teal)

The patchwork blocks for this lovely quilt are very easy to make as they are just Nine-Patch blocks.

The cross shapes are formed by the blocks in two different colourways. The quilt layout is “on-point”, which means the blocks are turned 45 degrees before being sewn together. The quilt uses fabrics from the Bird Pond collection, plus some Medium Dots and some Solid Colour fabrics.

There is also a version of the quilt in a blue and ginger colourway.

### Materials

- Fabric 1: ¼yd (25cm) – Marnie raspberry (100110)
- Fabric 2: ¼yd (25cm) – Tiny Plum pink (100105)
- Fabric 3: ¼yd (25cm) – Medium Dots maroon (130010)
- Fabric 4: ¼yd (25cm) – Mila lavender (100090)
- Fabric 5: ¼yd (25cm) – Solid lavender pink (120010)
- Fabric 6: ¼yd (25cm) – Marnie lilac (100088)
- Fabric 7: ¼yd (25cm) – Anemone maroon (100108)
- Fabric 8: ¼yd (25cm) – Pompom raspberry (100107)
- Fabric 9: ¼yd (25cm) – Klara lilac (100089)
- Fabric 10: ¼yd (25cm) – Tiny Plum teal (100081)
- Fabric 11: ¼yd (25cm) – Elodie honey (100102)
- Fabric 12: ¼yd (25cm) – Medium Dots blue (130002)
- Fabric 13: ¼yd (25cm) – Medium Dots light grey (130008)
- Fabric 14: ¼yd (25cm) – Solid soft teal (120003)
- Fabric 15: ¼yd (25cm) – Tiny Plum peach (100096)
- Fabric 16: ¼yd (25cm) – Elodie lavender (100086)
- Fabric 17: ¼yd (25cm) – Medium Dots teal (130001)
- Fabric 18: ¼yd (25cm) – Marnie sand (100098)
- Fabric 19: 1⅜yd (1.25m) – Solid dove white (120001)
- Backing fabric 3⅜yds (3.1m)
- Binding fabric ½yd (50cm) – Medium Dots ginger (130007)
- Wadding (batting) 60in x 76in (152.5cm x 193cm)
- Piecing and quilting threads
- Quilter’s ruler, rotary cutter and mat

### Finished Size

51in x 68in (129.5cm x 172.7cm) after binding

### Notes

- Fabric quantities given are based on a usable width of 42in (107cm)
- Measurements are in imperial inches with metric conversions in brackets – use only *one* system throughout (do not mix them)
- Wash all fabrics before use and press before cutting
- Use ¼in (6mm) seams unless otherwise instructed
- Read all the instructions through before you start

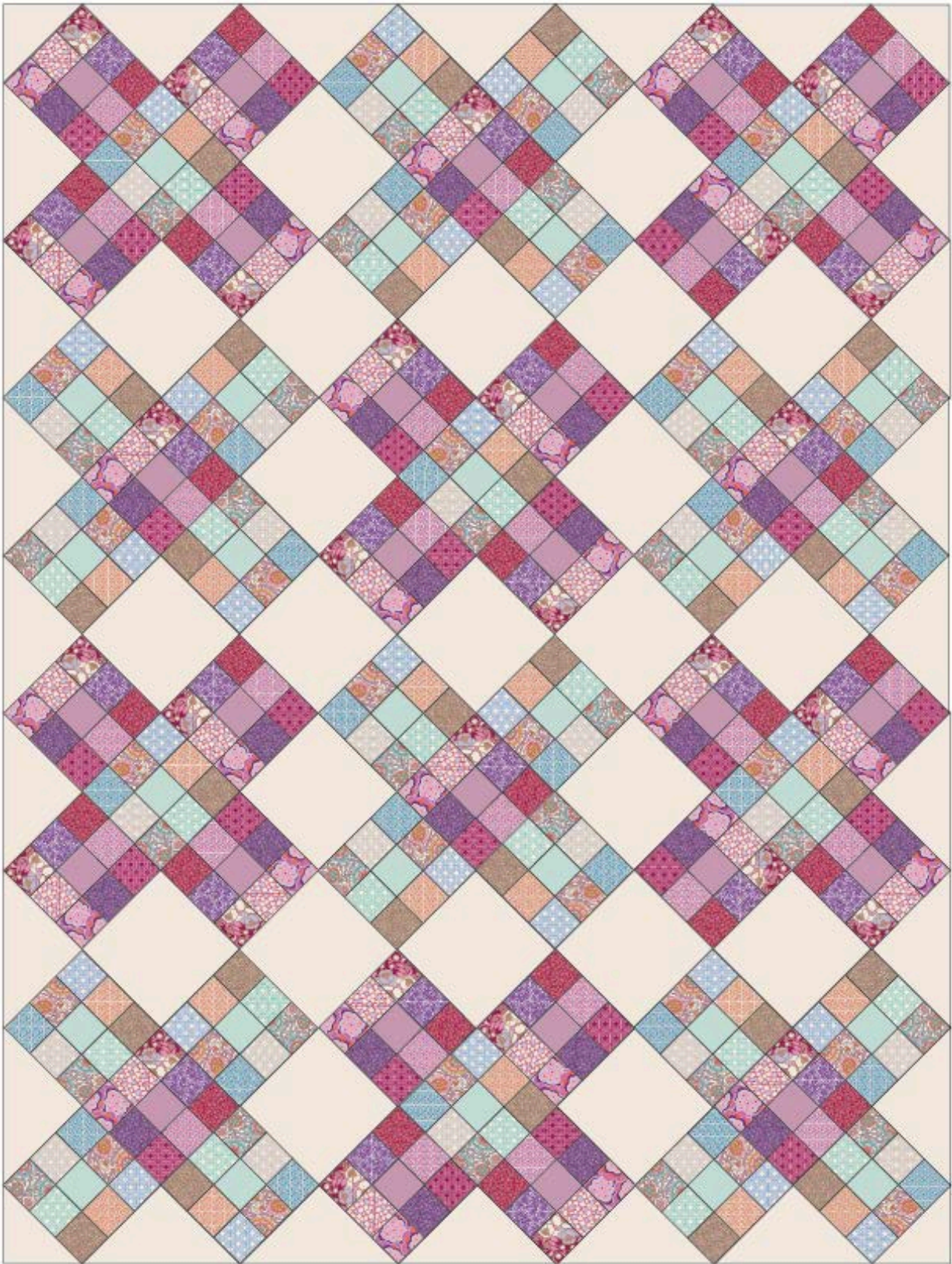
## Quilt Layout

1 The quilt is made up of sixty easy Nine-Patch blocks – thirty in one colourway and thirty in a second colourway. See **Fig A** for the fabrics used. The pieced blocks are laid out on point, in cross patterns, with plain Solid dove white squares in between. Triangles of solid fabric fill in at the sides of the quilt. See **Fig B** for the quilt layout.

**Fig A** Fabric swatches



**Fig B** The quilt layout





## Cutting Out

**2** For the Nine-Patch blocks, from Fabrics 1 to 18, cut two 2½in (6.4cm) x width of fabric strips from each fabric. Cut these strips into 2½in (6.4cm) squares. You need thirty squares from each fabric.

**3** From Fabric 19 (Solid dove white) cut the following.

- Twenty-three 6½in (16.5cm) squares, for the plain blocks.
- Six 9¾in (24.8cm) squares. Cut each square along *both* diagonals to make four triangles from each square (for a total of twenty-four setting triangles).
- Two squares 5¼in (13.3cm). Cut each square once along *one* diagonal (for a total of four corner triangles).

**4** Cut the backing fabric across the width into two pieces. Using a ¼in (6mm) seam, sew together along the long side and press the seam open. Trim to a piece about 60in x 76in (152.5cm x 193cm). This is about 4in (10.2cm) larger all round than the quilt top, to allow for quilting and finishing.

**5** Cut the binding fabric (Medium Dots ginger) into seven 2½in (6.4cm) x width of fabric strips. Sew the strips together end to end and press seams open. Press the binding in half along the length, wrong sides together.

## Making the Nine-Patch Blocks

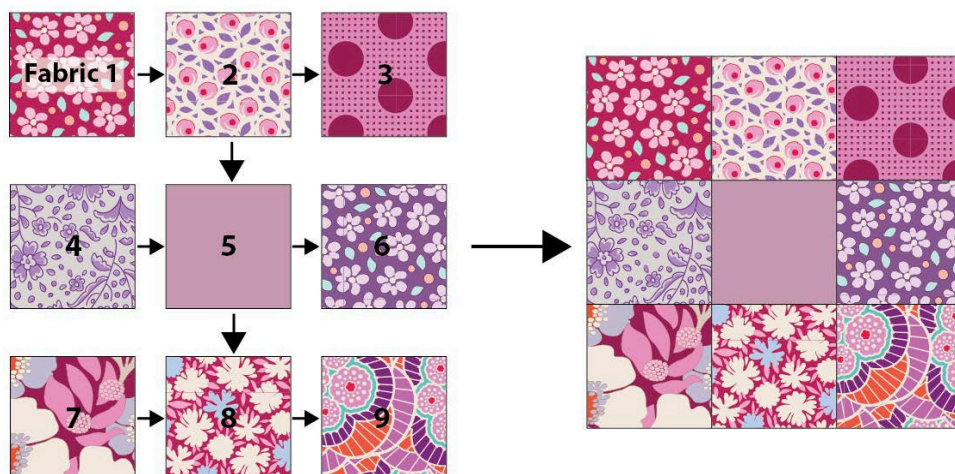
**6** There are two different colours of these blocks. Block 1 is mostly red fabrics (fabrics 1 to 9) and thirty of these are needed. Block 2 is mostly teal fabrics (fabrics 10 to 18) and thirty are needed.

**7** To make Block 1 follow **Fig C**, laying out nine squares in the fabrics shown. Using a ¼in (6mm) seam, sew the squares together in rows and press. Now sew the rows together, matching seams neatly and press. Check the block is 6½in (16.5cm) square. Repeat to make thirty blocks in total.

**8** To make Block 2 follow **Fig D**, making the block in the same way as Block 1. Repeat to make thirty blocks in total.

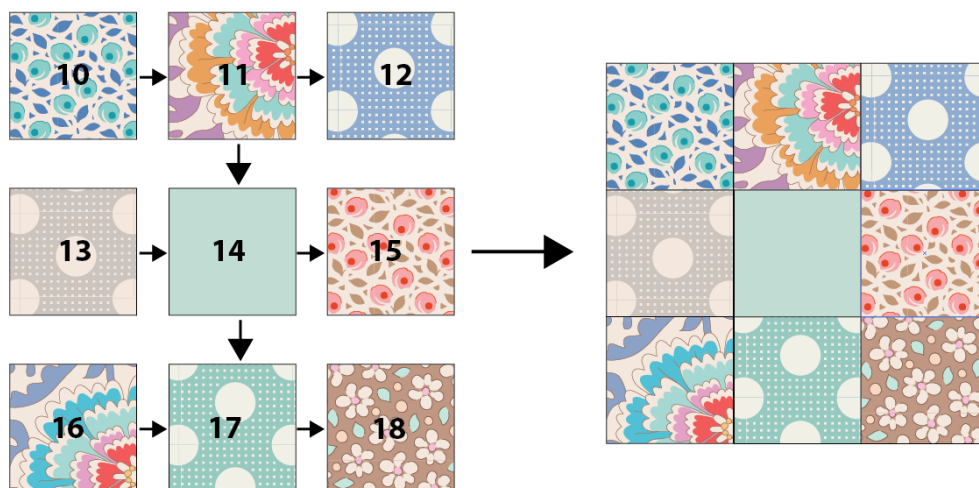
**Fig C** Making Block 1

Numbers show fabrics used (see Fig A)



**Fig D Making Block 2**

Numbers show fabrics used (see Fig A)

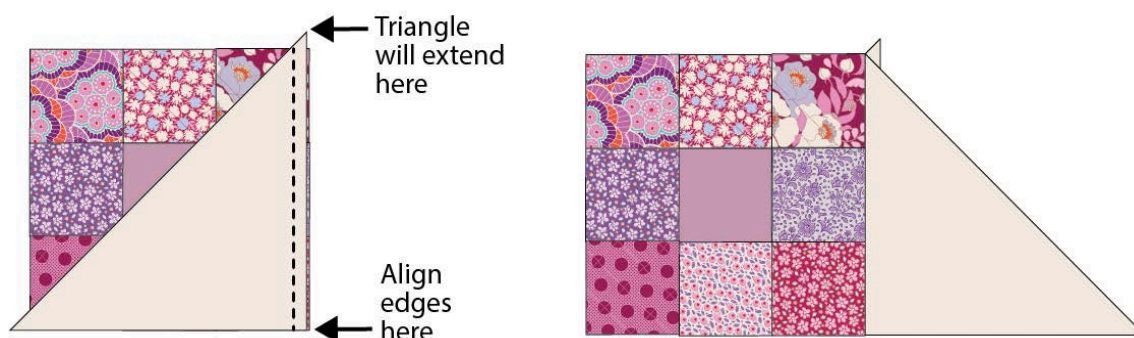


### Assembling the Quilt

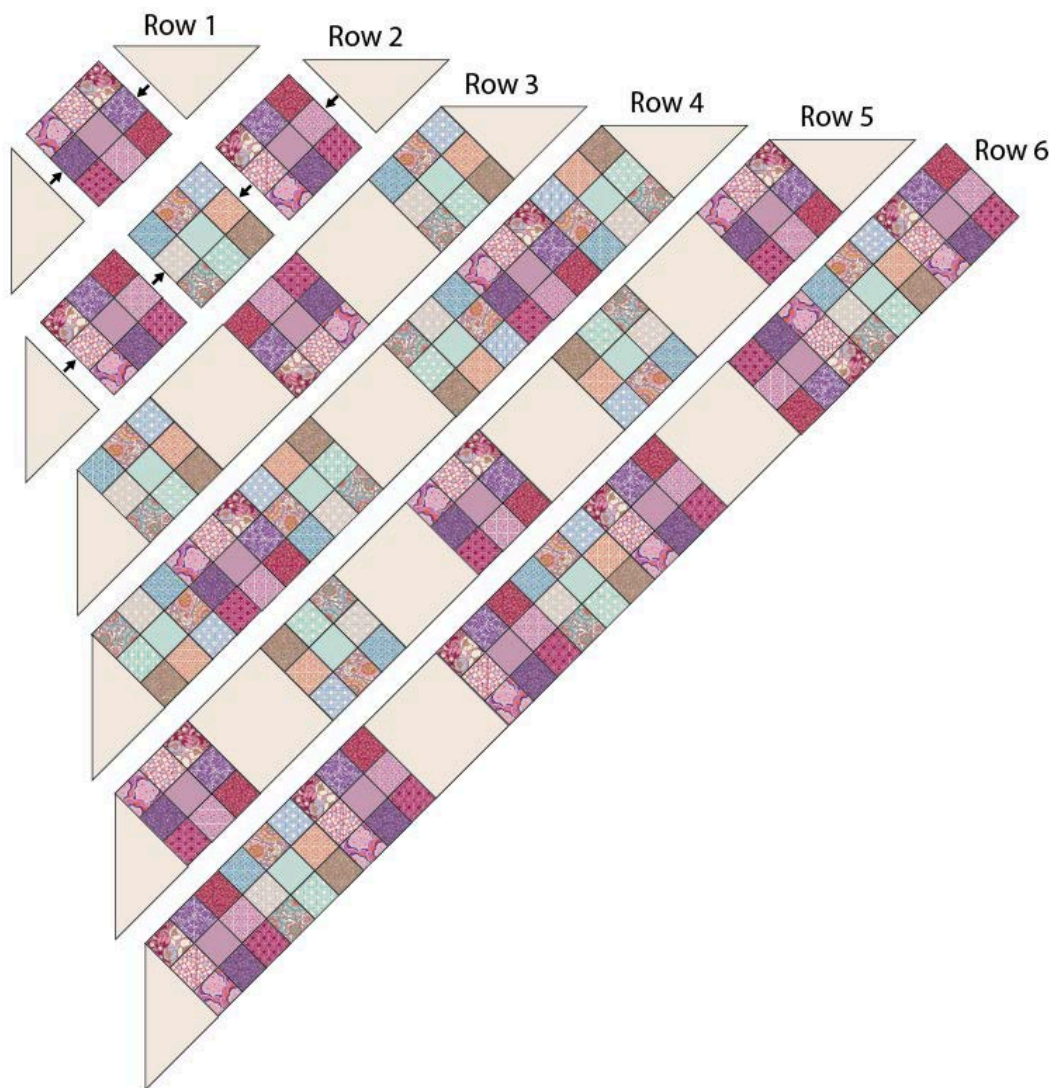
**9** The blocks need to be sewn together in a diagonal way. Lay out the Nine-Patch blocks, the plain blocks and the large triangles in the order shown in the quilt layout in **Fig B**. You will notice that the blocks are in a repeating cross pattern.

**10** When sewing the side setting triangles to the blocks you will need to use an offset seam, as shown in **Fig E**. This will ensure that the triangle and square line up well once sewn together. Sew the blocks together in diagonal rows, starting with Row 1 and then Row 2, Row 3 and so on. **Fig F** shows the first six rows. Press the seams of alternate rows in opposite directions.

**11** Once all the rows are sewn, sew them together, matching seams neatly, and then press. Finally, add the four smaller triangles, one to each corner.

**Fig E Adding a setting triangle to a block**

**Fig F Sewing the diagonal rows**



### Quilting and Finishing

**12** If you are quilting the quilt yourself you now need to make a quilt sandwich – you can do this in various ways, as follows.

- Use large stitches to tack a grid through the layers of the quilt in both directions, with lines about 4in (10cm) apart.
- Use pins or safety pins to fix the layers together.
- Use fabric glue, sprayed onto the wadding to fix the layers together.

If you are sending the quilt off to be commercially long-arm quilted you won't need to make a sandwich, as this is done when the quilt is mounted on the machine. When the layers of the quilt are secured you can quilt as desired.

**13** Use the prepared double-fold binding strip to bind your quilt. Sew the binding to the quilt by pinning the raw edge of the folded binding against the raw edge of the quilt. Don't start at a corner. Using a  $\frac{1}{4}$ in (6mm) seam, sew the binding in place, starting at least 6in (15.2cm) away from the end of the binding. Sew to within a  $\frac{1}{4}$ in (6mm) of a corner and stop. Take the quilt off the machine and

fold the binding upwards, creating a mitred corner. Hold this in place, fold the binding back down and pin it in place. Begin sewing the  $\frac{1}{4}$ in (6mm) seam again from the top of the folded binding to within  $\frac{1}{4}$ in (6mm) of the next corner and then repeat the folding process. Do this on all corners. Leave a 6in (15.2cm) 'tail' of unsewn binding at the end.

**14** To join the two ends of the binding, open up the beginning and end of the binding tails, lay them flat and fold the ends back so the two ends touch. Mark these folds by creasing or with pins – this is where your seam needs to be. Open out the binding and sew the pieces together at these creases. Trim off excess fabric and press the seam. Re-fold the binding and finish stitching it in place on the front of the quilt.

**15** With the quilt right side up, use a medium-hot iron to press the binding outwards all round. Now begin to turn the binding over to the back of the quilt, pinning it in place. Use matching sewing thread and tiny stitches to slipstitch the binding in place all round, creating neat mitres at each corner. Press the binding and your lovely quilt is finished.



## Cross Quilt (Blue and Ginger)

This version of the Cross Quilt is made with mostly blue and ginger fabrics from the Bird Pond collection, plus some Medium Dots and some Solid Colour fabrics. It is made in exactly the same way as the red and teal version of this quilt – simply replace the red blocks with the ginger blocks and the teal blocks with the blue blocks. See **Fig A** for the fabrics used for this version of the quilt.

### Materials

- Fabric 1: ¼yd (25cm) – Marnie night blue (100085)
- Fabric 2: ¼yd (25cm) – Tiny Plum teal (100081)
- Fabric 3: ¼yd (25cm) – Anemone night blue (100084)
- Fabric 4: ¼yd (25cm) – Pompom blue (100087)
- Fabric 5: ¼yd (25cm) – Solid lupine (120013)
- Fabric 6: ¼yd (25cm) – Elodie lavender (100086)
- Fabric 7: ¼yd (25cm) – Elodie lilac blue (100082)
- Fabric 8: ¼yd (25cm) – Mila teal blue (100083)
- Fabric 9: ¼yd (25cm) – Medium Dots denim blue (130013)
- Fabric 10: ¼yd (25cm) – Lovebirds ginger (100097)
- Fabric 11: ¼yd (25cm) – Medium Dots pink (130003)
- Fabric 12: ¼yd (25cm) – Anemone sand (100100)
- Fabric 13: ¼yd (25cm) – Marnie sand (100098)
- Fabric 14: ¼yd (25cm) – Solid dusty rose (120009)
- Fabric 15: ¼yd (25cm) – Tiny Plum peach (100096)
- Fabric 16: ¼yd (25cm) – Medium Dots ginger (130007)
- Fabric 17: ¼yd (25cm) – Elodie honey (100102)
- Fabric 18: ¼yd (25cm) – Klara ginger (100099)
- Fabric 19: 1⅜yd (1.25m) – Solid soft teal (120003)
- Backing fabric 3⅜yds (3.1m)
- Binding fabric ½yd (50cm) – Marnie honey (100103)
- Wadding (batting) 60in x 76in (152.5cm x 193cm)
- Piecing and quilting threads
- Quilter's ruler, rotary cutter and mat

### Finished Size

51in x 68in (129.5cm x 172.7cm) after binding

### Cutting Out

**1** Follow the cutting out instructions for the red and teal quilt but using fabrics 1 to 18 in **Fig A** here and Solid soft teal (120003) for the plain blocks and outer triangles.  
Prepare the backing fabric in the same way as the red and teal quilt.  
Prepare the binding from Marnie honey (100103) fabric.

### Making the Nine-Patch Blocks

**2** Make the blocks in the same way as in the red and teal quilt but using the fabrics shown in **Fig B** and **Fig C**. Make thirty of each block.

**Fig A** Fabric swatches**Fig B** Making Block 1

Numbers are fabrics used (see Fig A)

**Fig C** Making Block 2

### Assembling, Quilting and Finishing

3 Assemble and then quilt the quilt in the same way as the red and teal quilt. Bind to finish.