

# Pardon My Garden Quilt



A classic quilt made up of diamonds looks wonderful in any setting and this one will be a favourite for many years to come. The diamonds are framed by narrow strips of off white, which makes the diamonds ‘float’ within the setting. The quilt uses fabrics mostly from the Pardon My Garden range.

## Materials

- Fabric 1: 2yd (2m) – Solid Off White (481012)
- Fabric 2: ½yd (50cm) – Emily Green (481110)
- Fabric 3: ¼yd (25cm) – Sunflower Green (481111)
- Fabric 4: ¼yd (25cm) – Garden Flowers Dark Blue (481112)
- Fabric 5: ½yd (50cm) – Gerbera Blue (481113)
- Fabric 6: ½yd (50cm) – Wildgarden Green (481114)
- Fabric 7: ¾yd (40cm) – Audrey Dark Blue (481115)
- Fabric 8: ¼yd (25cm) – Ahlia Teal (481116)
- Fabric 9: ¼yd (25cm) – Garden Flowers Green (481117)
- Fabric 10: ⅝yd (60cm) – Wildgarden Dark Blue (481118)
- Fabric 11: ¼yd (25cm) – Pollen Teal (481119)
- Fabric 12: ¼yd (25cm) – Audrey Green (481120)
- Fabric 13: ⅝yd (60cm) – Emily Dark Blue (481121)
- Backing fabric 3½yds (3.25m)
- Binding fabric ½yd (50cm) – Solid Off White (481012)
- Wadding (batting) 58in x 82in (147.5cm x 208cm)
- Piecing and quilting threads
- Quilter’s ruler with 60-degree line, rotary cutter and mat
- Template plastic or thin card to make diamond template for fussy cutting

## Finished Size

49½in x 73in (126cm x 185.5cm) approximately (after binding)

## Notes

- Fabric quantities based on a usable width of 42in (107cm)
- Measurements are in imperial inches with metric conversions in brackets – use only *one* system throughout (do not mix them)
- Wash all fabrics before use and press before cutting
- Use ¼in (6mm) seams unless otherwise instructed
- Read all the instructions through before you start

## Cutting Out

**1** The diamonds in the quilt are cut from the twelve print fabrics (see Figure A for the swatches). These prints are used in a repeating order in the quilt (see Figure B for the quilt layout). Larger diamonds are needed in off white fabric: these are sub-cut into smaller triangles, to be used on the edges and corners of the quilt – Figure C shows how to divide these diamonds.

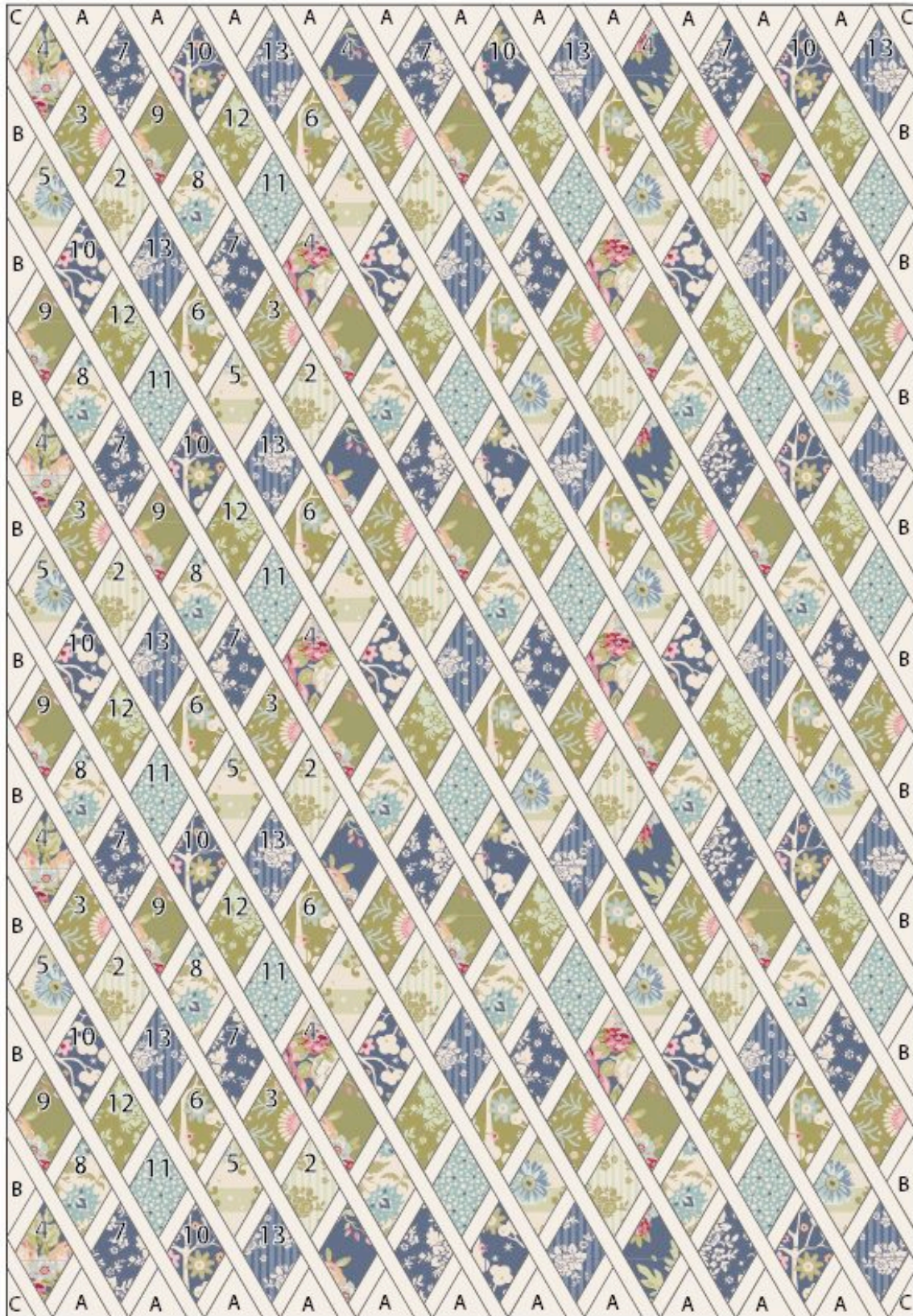
**Figure A** Fabric swatches



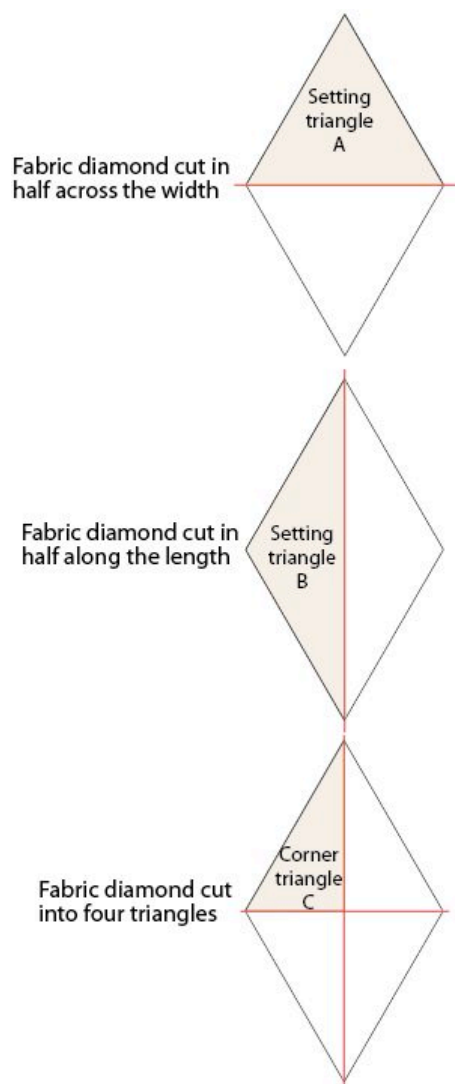
**Figure B** The quilt layout

Numbers indicate fabrics used, repeating horizontally in this diagram

Letters indicate the different setting triangle shapes

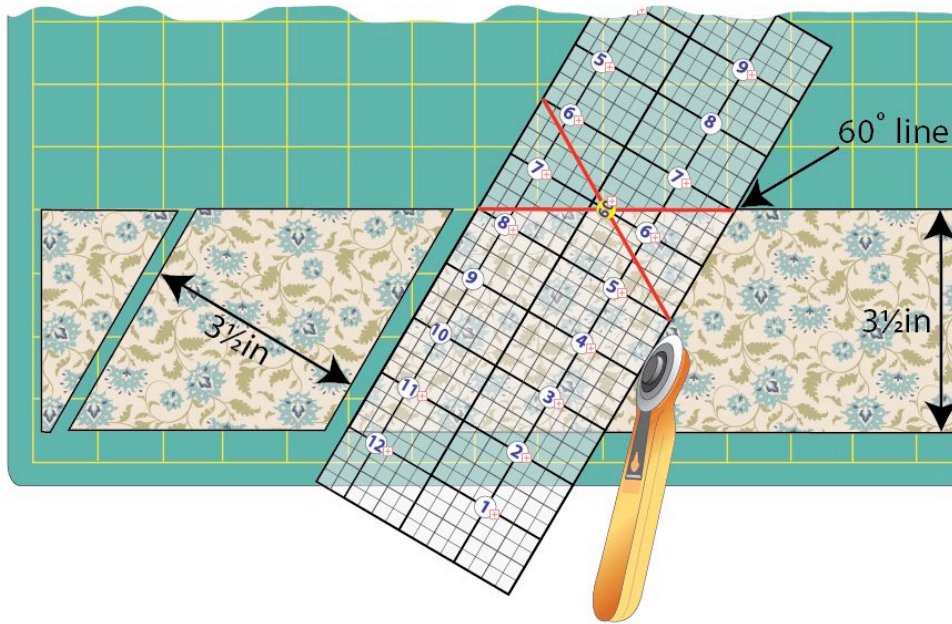


**Figure C** Preparing the setting triangles



**2** When cutting the diamonds for the quilt, the easiest way is to cut the diamonds from width of fabric strips, using the 60-degree line on a quilter's ruler to cut the correct angles (see Figure D). However, there are five fabrics used in the quilt that have a clear pattern direction and these have been fussy cut using a template (see Figure E). In this quilt this applies to Emily Green (Fabric 2), Gerbera Blue (Fabric 5), Wildgarden Green (Fabric 6), Wildgarden Dark Blue (Fabric 10) and Emily Dark Blue (Fabric 13). Using the template provided, make a master template from template plastic or thin card, making sure you copy the template accurately.

**Figure D** Cutting diamonds with a quilter's ruler



Nine diamonds from 3 1/2 in x width of fabric strip, cut with 60-degree ruler



**Figure E** Fussy cutting diamonds vertically with a template

Ten diamonds from 7 in x width of fabric strip, cut with template



**3** From Solid Off White (Fabric 1) cut three 3 3/4 in (9.5cm) x width of fabric strips and sub-cut twenty-one diamonds using the 60-degree line on your quilting ruler (Figure D). Note that these diamonds are slightly bigger than the print diamonds, so the fabric strip width is 3 3/4 in (9.5cm), and so is the diamond width. Cut these diamonds as follows.

- Cut eleven diamonds in half across the width, to create twenty-two Triangles A in total (see Figure C).
- Cut nine diamonds in half along the length, to create eighteen Triangles B in total.
- Cut one diamond in half across the width and along the length, to create four Triangles C in total (for the corners of the quilt).

**4** From Solid Off White (Fabric 1) cut the following.

- Six 5½in (14cm) x width of fabric strips. Sub-cut these into 1in (2.5cm) segments. You will need 240 pieces 1in x 5½in (2.5cm x 14cm) in total for the short sashing on the quilt.
- Twenty-four 1in (2.5cm) x width of fabric strips. Reserve these strips for the long sashing, joining them or cutting them to the correct length later, when the diamonds rows have been sewn together.

**5** From Emily Green (Fabric 2) cut two 7in (17.8cm) x width of fabric strips. Using your diamond template cut fifteen diamonds vertically on the fabric (so fabric stripes are vertical – see Figure E).

**6** From Sunflower Green (Fabric 3) cut two 3½in (9cm) x width of fabric strips and sub-cut eighteen diamonds using the 60-degree line on your quilting ruler.

**7** From Garden Flowers Dark Blue (Fabric 4) cut two 3½in (9cm) x width of fabric strips and sub-cut eighteen diamonds using the 60-degree line on your quilting ruler.

**8** From Gerbera Blue (Fabric 5) cut two 7in (17.8cm) x width of fabric strips. Using your diamond template cut fifteen diamonds vertically (so fabric stripes are horizontal).

**9** From Wildgarden Green (Fabric 6) cut two 7in (17.8cm) x width of fabric strips. Using your diamond template cut fifteen diamonds vertically (so fabric stripes are vertical).

**10** From Audrey Dark Blue (Fabric 7) cut three 3½in (9cm) x width of fabric strips and sub-cut twenty-one diamonds using the 60-degree line on your quilting ruler.

**11** From Ahlia Teal (Fabric 8) cut two 3½in (9cm) x width of fabric strips and sub-cut eighteen diamonds using the 60-degree line on your quilting ruler.

**12** From Garden Flowers Green (Fabric 9) cut two 3½in (9cm) x width of fabric strips and sub-cut eighteen diamonds using the 60-degree line on your quilting ruler.

**13** From Wildgarden Dark Blue (Fabric 10) cut three 7in (17.8cm) x width of fabric strips. Using your diamond template cut twenty-one diamonds vertically (so fabric stripes are vertical).

**14** From Pollen Teal (Fabric 11) cut two 3½in (9cm) x width of fabric strips and sub-cut eighteen diamonds using the 60-degree line on your quilting ruler.

**15** From Audrey Green (Fabric 12) cut two 3½in (9cm) x width of fabric strips and sub-cut eighteen diamonds using the 60-degree line on your quilting ruler.

**16** From Emily Dark Blue (Fabric 13) cut three 7in (17.8cm) x width of fabric strips. Using your diamond template cut twenty-one diamonds vertically (so fabric stripes are vertical).

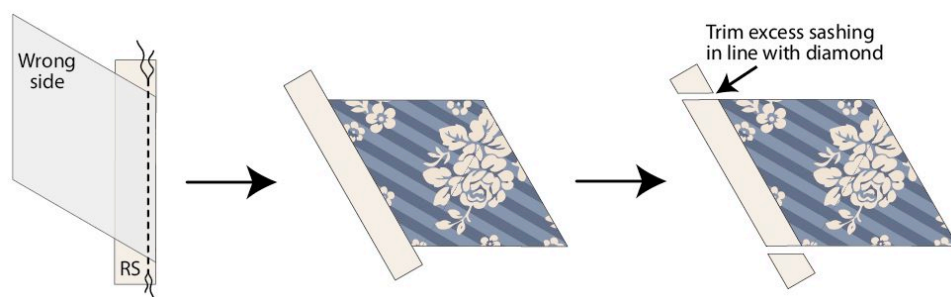
**17** Cut the backing fabric across the width into two equal pieces. Remove selvages. Sew the pieces together along the long side and press the seam open. Trim to a piece 58in x 82in (147.5cm x 208cm). This is about 4in (10.2cm) larger all round than the quilt top, to allow for quilting and finishing.

**18** Cut the binding fabric into seven 2½in (6.4cm) x width of fabric strips. Sew the strips together end to end and press seams open. Press the binding in half along the length, wrong sides together.

### Sewing Each Row Together

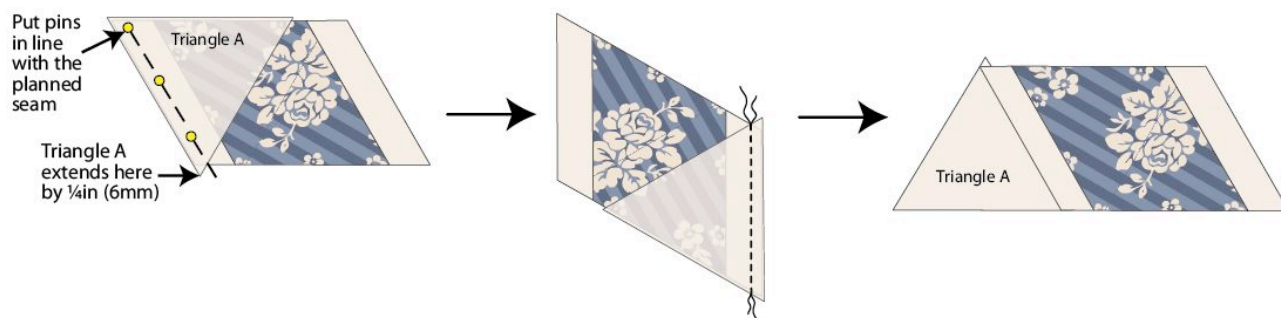
**1** The quilt is sewn together as rows (assembled diagonally), with 1in x 5½in (2.5cm x 14cm) off white sashing strips alternating with print diamonds. These short sashing strips are cut a little longer than needed and then trimmed flush with the diamond once the seam is sewn and pressed (see Figure F). Make sure that the sashing strips are sewn to the correct sides of the diamonds. Press seams open or towards the darker fabric.

**Figure F** Sewing a short sashing strip to a diamond

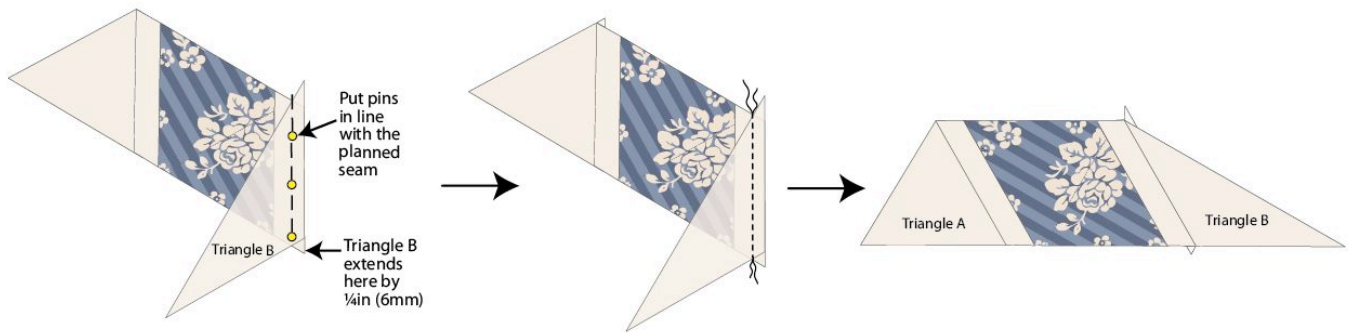


**2** At the end of each row will normally be a Triangle A and a Triangle B. These triangles (and Triangle C) need to be sewn in place using off-set seams. Figure G shows how to sew Triangle A in place and Figure H shows how to sew Triangle B. When sewing off-set seams on angled pieces it is useful to pin along the proposed seam line, so you can flip the pieces open before sewing, to check the edges will end up straight. When you start to sew, remove the pins just before the needle reaches them.

**Figure G** Adding Triangle A with an off-set seam



**Figure H** Adding Triangle B with an off-set seam



**3** There are twenty-one rows in total – follow Figure I carefully for the exact positions of all of the pieces, making the rows with the following pieces.

- Row 1 – Triangle A, two off white strips, one print diamond, Triangle B.
- Row 2 – Triangle A, four off white strips, three print diamonds, Triangle B.
- Row 3 – Triangle A, six off white strips, five print diamonds, Triangle B.
- Row 4 – Triangle A, eight off white strips, seven print diamonds, Triangle B.
- Row 5 – Triangle A, ten off white strips, nine print diamonds, Triangle B.
- Row 6 – Triangle A, twelve off white strips, eleven print diamonds, Triangle B.
- Row 7 – Triangle A, fourteen off white strips, thirteen print diamonds, Triangle B.
- Row 8 – Triangle A, sixteen off white strips, fifteen print diamonds, Triangle B.
- Row 9 – Triangle A, eighteen off white strips, seventeen print diamonds, Triangle B.
- Row 10 – Triangle A, twenty off white strips, nineteen print diamonds, Corner triangle C.
- Row 11 – Triangle A, twenty off white strips, nineteen print diamonds, Triangle A.
- Row 12 – Corner triangle C, twenty off white strips, nineteen print diamonds, Triangle A.

Note that the setting triangles swap positions from Row 13 onwards.

- Row 13 – Triangle B, eighteen off white strips, seventeen print diamonds, Triangle A.
- Row 14 – Triangle B, sixteen off white strips, fifteen print diamonds, Triangle A.
- Row 15 – Triangle B, fourteen off white strips, thirteen print diamonds, Triangle A.
- Row 16 – Triangle B, twelve off white strips, eleven print diamonds, Triangle A.
- Row 17 – Triangle B, ten off white strips, nine print diamonds, Triangle A.
- Row 18 – Triangle B, eight off white strips, seven print diamonds, Triangle A.
- Row 19 – Triangle B, six off white strips, five print diamonds, Triangle A.
- Row 20 – Triangle B, four off white strips, three print diamonds, Triangle A.
- Row 21 – Triangle B, two off white strips, one print diamond, Triangle A.



Figure I Sewing the rows together



## Joining the Rows

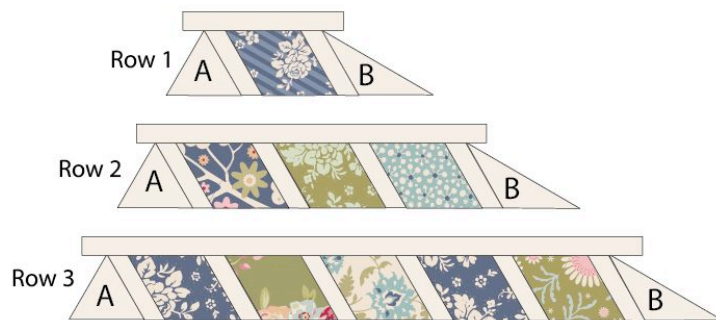
**1** When all twenty-one rows have been made, they are joined together with long strips of 1 in (2.5cm) sashing. These strips are cut longer than needed. For most rows you will need to join off white strips to create lengths long enough. Measure the top of each row and cut an off white strip *at least* 1 in (2.5cm) longer than the pieced row. Sew the strip to the top of each row, pressing seams as you go (see Figure J). On Row 21 sew a strip along the top *and* along the bottom.

**2** Now sew the rows together, taking great care to position the short sashing strips so the diagonal pattern is continued neatly (see Figure K). Press the seam after each row is sewn.

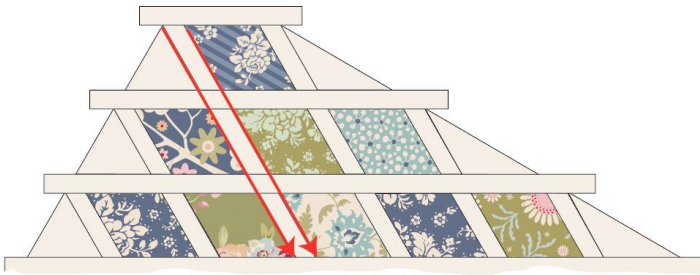
**3** At the top of Row 1 and the bottom of Row 21, sew a Corner Triangle C to finish the quilt layout.

**4** Now trim the edges of the quilt so the sides are straight and the corners are right-angled.

**Figure J** Adding the long sashing strips



**Figure K** Matching up the angles of the short sashing strips



## Quilting and Finishing

**1** If you are quilting the quilt yourself you now need to make a quilt sandwich – you can do this in various ways, as follows.

- Use large stitches to tack a grid through the layers of the quilt in both directions, with lines about 4 in (10cm) apart.
- Use pins or safety pins to fix the layers together.
- Use fabric glue, sprayed onto the wadding to fix the layers together.

If you are sending the quilt off to be commercially long-arm quilted you won't need to make a sandwich, as this is done when the quilt is mounted on the machine.

**2** When the layers of the quilt are secured you can quilt as desired. For this quilt you could machine or hand stitch 'in the ditch' (that is, along the seams) of each patchwork piece, or echo quilt about ¼in (6mm) away from all of the seams, or quilt vertically and horizontally across the quilt, intersecting the diamonds. When the quilting is finished, trim excess wadding and backing.

**3** Use the prepared double-fold binding strip to bind your quilt. Sew the binding to the quilt by pinning the raw edge of the folded binding against the raw edge of the quilt. Don't start at a corner. Using a ¼in (6mm) seam, sew the binding in place, starting at least 6in (15.2cm) away from the end of the binding. Sew to within a ¼in (6mm) of a corner and stop. Take the quilt off the machine and fold the binding upwards, creating a mitred corner. Hold this in place, fold the binding back down and pin it in place. Begin sewing the ¼in (6mm) seam again from the top of the folded binding to within ¼in (6mm) of the next corner and then repeat the folding process. Do this on all corners. Leave a 6in (15.2cm) 'tail' of unsewn binding at the end.

**4** To join the two ends of the binding, open up the beginning and end of the binding tails, lay them flat and fold the ends back so the two ends touch. Mark these folds by creasing or with pins – this is where your seam needs to be. Open out the binding and sew the pieces together at these creases. Trim off excess fabric and press the seam. Re-fold the binding and finish stitching it in place on the front of the quilt.

**5** With the quilt right side up, use a medium-hot iron to press the binding outwards all round. Now begin to turn the binding over to the back of the quilt, pinning it in place. Use matching sewing thread and tiny stitches to slipstitch the binding in place all round, creating neat mitres at each corner. Press the binding and your beautiful quilt is finished.

~ ~ ~ ~ ~ ~ ~ ~ ~ ~